

Thorn In Ashland's Side?



Glenn Bostwick, the fleet-footed scat back member of the Medford Black Tornado, is expected to be one of the thorns in the side of Ashland when the two teams clash here Friday night in their traditional game. Coach Al Simpson has been drilling the defending state champions hard in an effort to stop Ashland's double wing formation. The Grizzlies, winners in four of six games this season, have a fast and deceptive team which will make the Tornado get down and hustle to keep its undefeated record intact.

First All-American Football Team Places One Player From West Coast

By Oscar Fraley
United Press Sports Writer
New York, Nov. 7 — (U.P.) — Picking an all America football team ranks on a psychiatric par today with such painful pranks as cop fighting, attempts to fill inside straight, betting the rent money on "hot tips" and deriding the mother-in-law to the little woman.

None of which halts Fearless Fraley from putting a back in motion and qualifying for a nice warm ward this cold winter by selecting the first such eleven of 1945.

It was tough getting beyond the post boundary at West Point, and not because of the M.P.'s, either. For as six bruised opponents of the Cadets could tell you in much more emphatic tones, the Army has a lot of sure-fire all Americans.

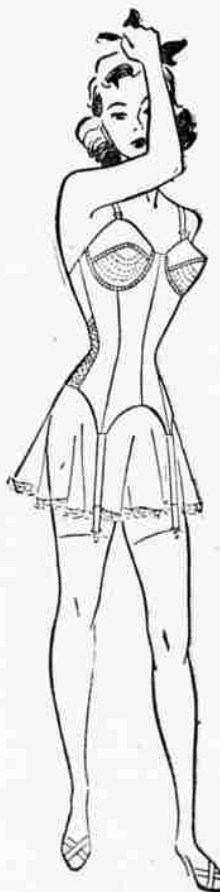
The team as seen in the bottom of this water bucket:

E—Henry Foldberg, Army; T—Tom Hughes, Purdue; G—John Green, Army; C—Vaughan Mancha, Alabama; G—Warren Amling, Ohio State; T—Dewitt Coulter, Army; E—Dick Duden, Navy; QB—Harry Gilmer, Alabama; HB—Glenn Davis, Army; HB—Herman Wedemeyer, St. Mary's; FB—Felix Blanchard, Army.

The Battle of Infernal Caverns, in Modoc county, was one of the famous Indian fights in western history.

Chest Colds
To Relieve Misery
Rub on Tested **VICKS**
VAPORUB

For the Junior and the "Little Woman"



Warner's
Youth
Corsette

... gives the diminishing waistline and rounded hip silhouette.

Bust is high, rounded and with a very definite division. Bodice fits snugly following curves of body.

Fashioned in cotton batiste with novelty elastic gores. Hook and eye closing, center back.

Other new shipments of Warner's and Warnerettes just received.

Long Warner Bra.

that hooks down over the girdle giving the style you've been waiting for. Sizes 36 to 46.

Warnerette Elastic Girdle

This Warnerette ALL elastic girdle comes in small, medium and large sizes.

Warner's Wrap Around Girdle

Wrap-around girdles ARE HERE. The long awaited shipment you've been waiting for. Sizes 26 to 34 waist.

Warner's Elastic Panty Girdle

This ALL elastic panty girdle is another long awaited item. Sizes small, medium and large.

M. M. Dept. Store

SEVEN WRESTLERS WILL SQUARE OFF IN BATTLE ROYAL

Nearly a ton of wrestling flesh will be in the ring at the same time at Medford armory tomorrow night when Mack Lillard presents the first seven-man battle royal in the history of Medford. Principals will be Coast Champion Jack Lipscomb, Bulldog Jackson, Rough Rufus Jones, Ernie Piluso, Harold (Blood and Guts) Davidson, Angelo Martinelli and Gorilla Pogg.

Lillard said he has arranged the pay the wrestlers will receive on a plan whereby the longer the participants stay in the ring the more money they will receive. First man eliminated from the battle royal will be paid only transportation expenses. Second and third man out will be paired for the three-round opening match with the fourth and fifth to be eliminated mixing in a four round bout. Last two left in the battle royal will make up the six round main event and receive top pay.

Two referees, one inside the ring and one outside, will be used, Lillard said. Emil Westfall will probably have the outside job with the other yet to be named.

TALENT TO FACE TOUGH GRID FOE

Talent, Nov. 7 — Talent and Rogue River high school six-man football teams will clash under the lights here Friday night in what promises to be the outstanding game of the local season. Considerable rivalry exists between the two schools since their teams have met twice in the last two years to determine the county championship.

Rogue River is said to have one of the toughest teams to represent the school in several years and Talent Coach Roy Parr expects a tough game. Talent will be gunning for its 24th consecutive win.

Other county six-man games send Eagle Point to Prospect, Jacksonville to Gold Hill and Phoenix to Central Point.

Here's Medford Chance To Show Grid Supremacy

A United Press dispatch from Spokane, Wash., today issued a challenge to any high school football team in the nation to meet Gonzaga, Spokane's champion prep school eleven, in a Thanksgiving Day game at Spokane Nov. 22. The challenge was made by the Spokane Athletic Round Table.

"We will back Gonzaga against any leading prep eleven this side of Guam," the article quoted the round table as stating.

The athletic-minded group will stand traveling expenses for the team "best qualified" to meet the Thanksgiving Day challenge, the article stated.

CUBS TO CATALINA
Chicago, Nov. 7 — (U.P.) — The Chicago Cubs will be Catalina island-bound for spring training Feb. 17, Vice President Jim Gallagher said today.

HOGAN, SHUTE LEAD
Pinehurst, N. C., Nov. 7 — (U.P.) Ben Hogan, holder of the course record, and Denny Shute, Akron, O., veteran, were six under par today as they led the way into the second round of the north and south open golf tournament.

Serve HAMBURGERS at home

VALLEY'S
Hamburger Relish
MAKES THEM SUPER

Southworth Replaced As St. Louis Card Manager

St. Louis, Mo., Nov. 7 — (U.P.) — Eddie Dyer, a veteran of 20 years as manager and scout in the St. Louis Cardinal farm system, has signed a contract to replace Billy Southworth as manager of the National league club, owner Sam Breadon announced today.

Breadon said Dyer signed a two-year contract last Friday. No terms were revealed, but it was assumed Dyer would receive approximately the same salary as Southworth, the builder of Redbird champions who resigned to become skipper of the Boston Braves.

Begs Off Contract
Southworth, who begged off his 1946 contract to manage the Cardinals when the Braves offer came along, reportedly received \$20,000 a year.

Breadon would not reveal the terms of Southworth's Redbird contract, nor the salary he would receive in Boston. Baseball men were speculating that the Boston figure probably was at least \$5,000 over Billy's former salary—or around \$25,000.

In Oil Business
Dyer, a veteran of 20 years as manager and scout in the Cardinals farm system left baseball last year to join his brother in the oil business at Houston, Tex. His son said last night that Dyer had no comment on the reports.

Dyer, a lefthanded pitcher at Rice Institute, signed a Cardinal contract in 1922, but a sore arm stopped his playing career. He became manager at Topeka and then at Scottsdale, where Joe

Medwick made his professional start.

INJURIES HIGH IN GRID GAMES OVER WEEK-END

Chicago, Nov. 7 — (U.P.) — Mother, if your son wants to play football, let his read this first. It's just a partial casualty list of some of last weekend's games:

Notre Dame 6, Navy 6.
Notre Dame — Halfback Elmer Angsman, lost 11 teeth; Fullback Frank Ruggerio, in university infirmary with 13 stitches in his chin; Fullback John Panelli, probably out the remainder of the season with shoulder separation; Guard Vince Scott, slight concussion.

Chicago Bears 28, Green Bay 24.

Green Bay — Halfback Roy McKay, broken nose; Halfback Irv Comp, seriously injured leg, will be out of the next two games, possibly the rest of the season.

Chicago — Tackle Lee Artoe, fractured upper jaw, seriously bruised cheek bone, teeth out of place.

Ohio State 16, Northwestern 14.

Northwestern — Halfback Bruce Bairstow, shoulder separation, lost for the rest of the

reason; Quarterback Don Laser, sidelined with facial cuts.

Michigan 26, Minnesota 0.
Michigan — Halfback Bob Nussbaumer, broken nose; Halfback Don Robinson, reinjured knee; Henry Fonde, pulled muscles, plus a smattering of wrenched ankles.
(* Dents, bruises and swellings not included.)

TO COACH BRONCOS

Santa Clara, Nov. 7 — (U.P.) — Laurence A. (Moon) Mullins, former Notre Dame gridiron

Wednesday, Nov. 7, 1945 MEDFORD MAIL-TRIBUNE—THREE

star, today was under contract to coach the 1946 University of Santa Clara football team.

AMERICAN ARRESTED

Shanghai, Nov. 7 — (U.P.) — U. S. army authorities today arrested Theodore C. Garrett, 40, American citizen born in Denver, Colo., for investigation of unspecified criminal charges.

Closing time for Sunday 100 Late to Classify 4:30 Saturday afternoon Please remember

Use Mail Tribune Want Ads.



ANKLETS!

1500 Pair of "ALL WHITE" ANKLETS

... Elastic or Cuff Tops ... Mercerized Cotton ... 100% Wool ... Spun Nylons and Rayon Mixtures ... Just the ones you've been looking for

35c to \$1.49
AT
LEON'S
21 NORTH CENTRAL

NEW GIANT X-RAY

The Latest Development in 50 Years of X-Ray Research



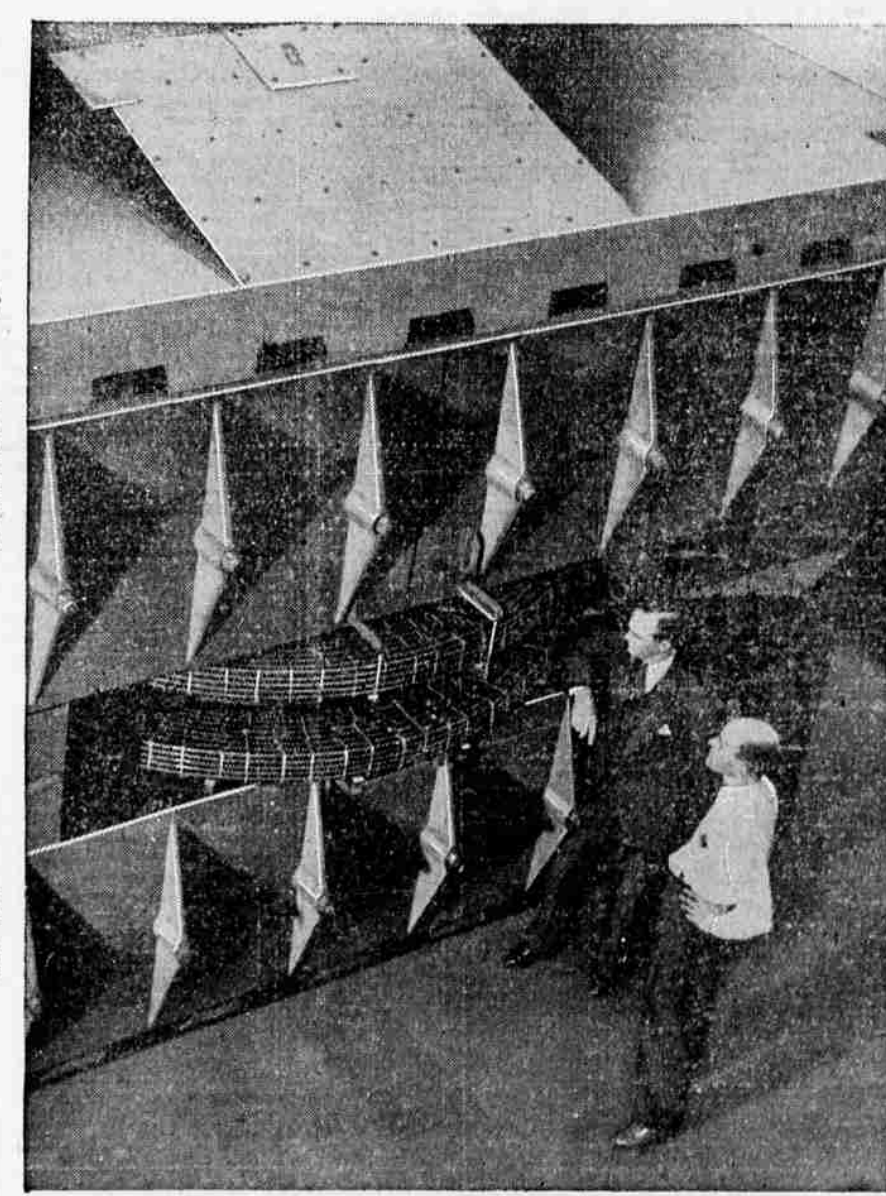
1895—Roentgen, in Germany, discovers mysterious powerful ray, names it "X"—the unknown. One year later, W. D. Coolidge, student at M.I.T., begins experimenting with x-rays. First x-ray tubes were about 25,000 volts.



1913—Dr. W. D. Coolidge, at General Electric, invents revolutionary new x-ray tube. First reliable method of controlling x-rays. This tube was 100,000 volts.



1920—Coolidge designs a completely insulated tube and transformer for a thoroughly safe x-ray unit. The first wholly safe, convenient and adequate dental x-ray outfit came out of this.



1945—NEW G-E 100-MILLION-VOLT "BETATRON"!

This 130-ton giant whirls electrons, tiniest parts of atoms, faster than man has ever been able to speed them before. So fast that they make the nearly 17-foot circular orbit of a doughnut-shaped vacuum tube 250,000 times in 1/240th of a second, and, striking a tungsten target, produce x-rays of 100-million-electron volts!

Dr. E. E. Charlton, left, and W. F. Westendorp, G-E scientists, designed this new machine, which generates x-rays over a thousand

times as intense as the early Coolidge tube—with a wave length of 0.00025 Angstrom units, up in the cosmic ray band! These rays will penetrate a thickness of metal considerably greater than even the 2,000,000-volt x-ray unit.

But more important still may be the uses of these super x-ray machines in medical and atomic research. G. E. is making them available to medical science for experimental therapy.

General Electric Company, Schenectady, N. Y.

More Goods for More People at Less Cost

GENERAL ELECTRIC



1923—Coolidge develops a 200,000-volt "deep therapy" tube with water-cooled target. This higher voltage tube greatly reduced time required for x-ray treatments.



1933—General Electric builds multi-section tubes producing 800,000-volt x-rays. Installed in Mercy Hospital, Chicago, and Swedish Hospital, Seattle, these units have been in constant use ever since.



1940—First 1,000,000-volt unit, plus portability, making x-rays more useful to medicine and industry. Fifty-six of these units built by G-E X-Ray Corporation used in U.S. war production—even flown to England. In 1943 General Electric scientists and engineers developed the first portable 2,000,000-volt x-ray.