

ILLINOIS STRAW RADIUM-TAINTED AFTER BOMB TRY

Cambridge, Mass., Nov. 2—(U.P.)—A quantity of strawboard made from straw cut in southern Illinois 23 days after the test atomic bomb explosion in New Mexico was found to be strongly radioactive, according to the director of laboratories at Massachusetts Institute of Technology.

Dr. Robert D. Evans, also physics professor at MIT, disclosed last night that photographic tests of the strawboard revealed that it was so intensely radioactive that it would have ruined any film wrapped in it. The tests were made at the Rochester, N. Y., plant of the Eastman Kodak Co.

Dr. Evans and other scientists investigating the strange effects have two possible explanations: 1. The atomic bomb explosion in Los Alamos, N. M., may have been responsible. Some of the active ingredients of the bomb which were not "smashed" may have carried to a high altitude, become caught in the trade winds, then borne eastward, and precipitated by rain on the Illinois strawfields.

"The contamination may have come from some other source, possibly the nearby Wabash river.

The problem is further complicated, Dr. Evans said, by the fact that strawboard produced at the same time in mills in Indiana, Iowa and other points in the same geographical area proved to be clean.

ON ASHLAND STAGE

The Varsity Theater in Ashland will present on its stage tonight a colorful dance frolic, starring students of the Colleen Hope dance studios. Medford boys and girls taking part in the program are Kathleen Hammack, Jerry Liebman, Dale Hartley, Gloria Bishop, Georgie Baker, Kathleen Jones, Carol Edsol, Lorita Jennings, Barbara Lickess, Carlene Caton, Sharon Groat, Sandra Lange, Beverly Hogue, Donna Laing, Patty Hilton, Pat Roberts, Sam Jennings Jr., Janet Coyle, Deloris Baize.

Be as determined to help put the Victory Loan Bond drive over the top as were the men who made victory possible.

1946 Chevrolet Here Saturday



A gleaming front assembly which accentuates the low, sleek lines of the entire car, and an appealing array of color combinations are features of the modish style which makes the new 1946 Chevrolet the criterion of the low-priced field. The smart new car makes its debut in Medford Saturday at the showrooms of Rogue River Chevrolet at Ninth and Bartlett streets.

Embodiment of the best thinking of automotive designers, the new Chevrolets emphasize classical lines, with a long, flowing sweep from front to back. Chromium plated and stainless steel trim, used with restraint and good taste, highlights the overall design. Streamlining is combined with massiveness and lowness as shown in the accompanying illustration of the Stylemaster sport sedan.

The bodies by Fisher, exclusive with Chevrolet in the low-priced field, provide a combination of style, safety, luxury and durability. Fisher Unisteel construction means that floor, panels, cowl and turret-top roof are welded to form an all-steel unit. No-draft ventilation is provided. A Chevrolet feature is the door-action fender, which flows lines smoothly back half way into the front doors. The new hood is exceptionally deep and massive. Interiors are the last word in taste and luxury. Upholstery is superlatively tailored in fabrics that look smarter, wear better and clean more easily.

Pure beauty has been attained by master craftsmen in the design of interior fittings, instrument panel fixtures and home-like conveniences inside the car. The instrument panel is distinctive, too, for its practical arrangements of dials and indicators, contributing to the ease of driving.

Six color schemes are available on all regular models. A range of three solid colors is available. And two-tone combinations are available on specification, all in the most desired shades.

The front-end treatment of the 1946 Chevrolet is completely new, bringing into modern focus the lowness and massiveness of line. The bumper, radiator grille and headlamps present a combined appearance of classic simplicity. The gleaming, unadorned horizontal bars of the grille emphasize width, and lower the door-action fender, which flows lines and would require removal of any meter previously placed in service.

Meanwhile the city council has approved a contract with the Michaels Art Bronze company of Kentucky calling for the installation of 400 meters on a six-month trial basis.

1,068,794 Counted Combat Casualties

Washington, Nov. 2—(U.P.)—U. S. combat casualties in World War II stood at 1,068,794 today. The total included 273,830 killed, 651,702 wounded, 27,219 missing, and 116,043 captured. The service figures were 922,655 for the army and 146,139 for the navy, marine corps, and coastguard.

THE GRANGE

Roxy Anne Grange
First November meeting for Roxy Anne Grange will be Friday, Nov. 2, at 8 p. m. at the Grange hall, with election of officers set for the evening. Serving committee will be Mrs. Lillian Forse and Mr. and Mrs. Rushton.

Closing time for Classified Ads 8:30 a. m.—1:00 Late to Classify 12:15 p. m.

DIABOLIC!



HE RUINED

The lives of countless women with his power!

"ENEMY OF WOMEN"
THE PRIVATE LIFE OF DR. PAUL JOSEPH GOLDREES

RIALTO SUNDAY!

Interior and Exterior PAINTING

PAPER HANGING
Work Guaranteed
CALL 2419

Younger's Appliance
DUTCH BOY PAINTS
31 N. Bartlett

YOUTHFUL PREXY

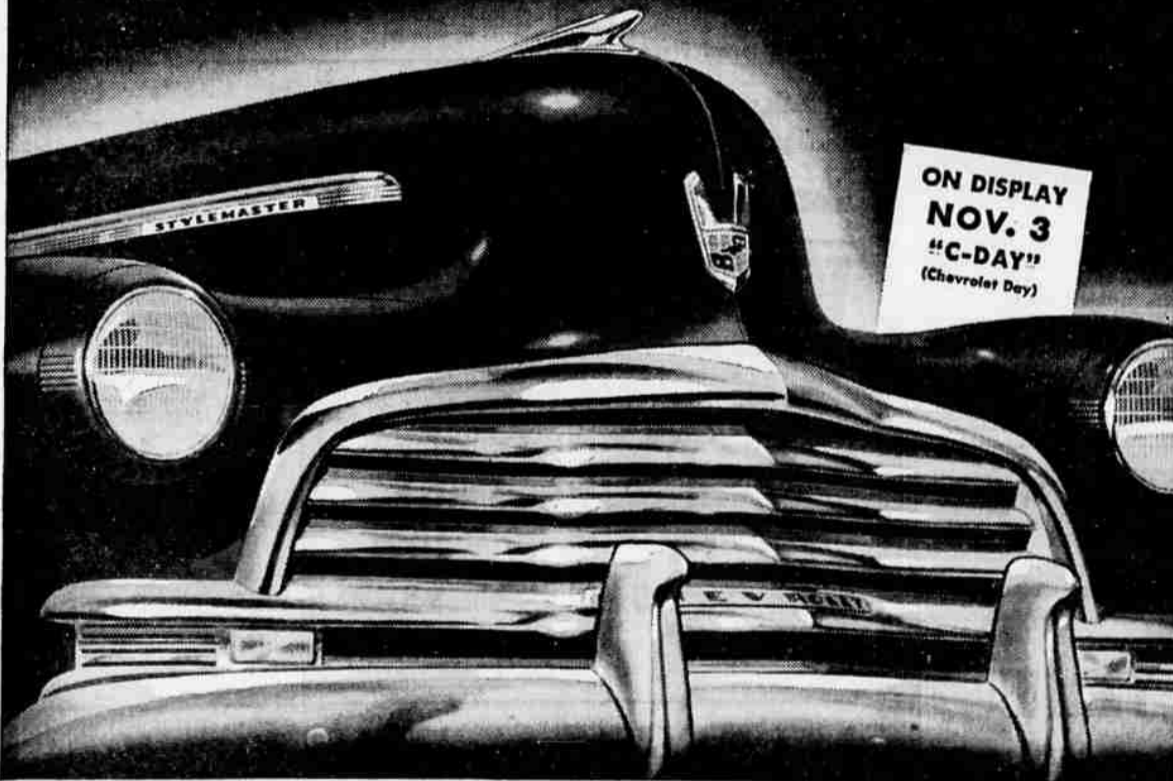
Hanover, N. H., Nov. 2—(U.P.)—John Sloan Dickey became one of the youngest college heads in the nation today when he was installed as the 12th president of Dartmouth college. The 38-year-old former Boston lawyer was inducted at simple ceremonies to succeed Dr. Ernest Martin Hopkins who retired because of age after serving as Dartmouth's president for 29 years.

PARKING METERS FACE VOTE TEST

Salem, Nov. 2—(U.P.)—More than 1700 registered voters have signed petitions protesting the installation of parking meters in Salem, City Recorder Alfred Mundt said today after checking the validity of the signatures.

The number of names is 200 more than is required to bring the matter to a vote of the people at the next general election. Mundt said the measure will be a proposed city charter amendment to prohibit the installation

Come In, Everybody!
See the New 1946 CHEVROLET



Styled to lead in Beauty

Engineered to lead in Performance

Built to lead in Economy

Outstanding appearance features of the new 1946 Chevrolet include: new Beauty-Leader Styling; luxurious Body by Fisher; new Wide-Wing radiator grille; new hood ornamentation; new two-tone color harmonies; distinctive new instrument panel; and massive new "Car-Saver" bumpers both front and rear.

Notable engineering features include: Chevrolet's proved Valve-in-Head Thrift-Master Engine for performance with economy; the famous Unitized Knee-Action Ride for comfort; Extra-Easy Vacuum-Power Shift and Shockproof Steering for driving ease; and Positive-Action Hydraulic Brakes for smooth, safe, positive stops.

For years, Chevrolet has been the most economical of all largest-selling low-priced cars, from the all-round standpoint of gas, oil, tires and upkeep; and the new Chevrolet for 1946 is designed and built to maintain this reputation for highest quality at low cost. Be sure to see this beautiful new car at your Chevrolet dealer's.

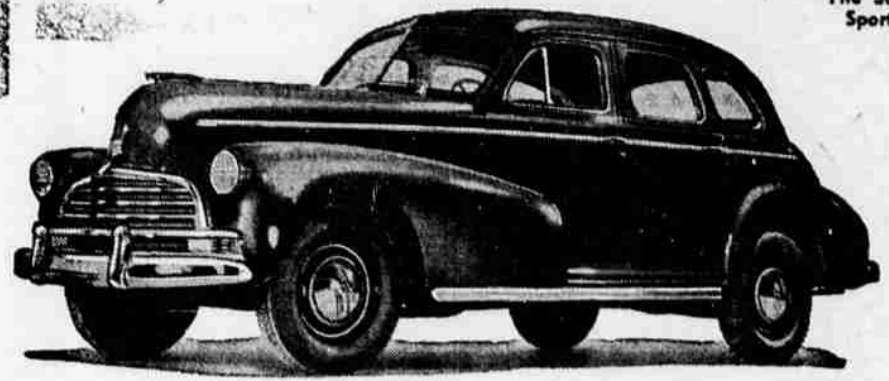
YOU PUT IT FIRST IN SALES



WE KEEP IT FIRST IN VALUE

Choose the Leader—CHEVROLET
ROGUE RIVER CHEVROLET

NINTH and BARTLETT — TELEPHONE 2288



The Stylemaster Sport Sedan

Here Tomorrow!
SATURDAY

The New

1946
CHEVROLET

Saturday Is "THE DAY"!

You Are Cordially Invited to Inspect the FIRST 1946 CHEVROLET—The Finest in Chevrolet History!

- A Pleasure To SEE!
- A Pleasure To DRIVE!
- A Pleasure To RIDE!
- A Pleasure To OWN!

COME IN AND BE CONVINCED

Showrooms Open From 8 a. m. to 9 p. m.

ROGUE RIVER CHEVROLET

Ninth and Bartlett Streets