

### SUNDAY EDITIONS NEW YORK PAPERS STRIKE HINDERED

New York, June 30—(U.P.)—Distribution of five New York Sunday newspapers with a combined circulation of approximately 8,000,000 was virtually halted tonight by a strike of some 1,700 members of the Newspaper and Mail Deliverers Union, an independent organization.

The strike had not been scheduled to begin until 12:01 a. m., tomorrow but most workers who normally report at 4 p. m. telephoned they were "sick." This dashed the hopes of publishers who had set their press times ahead in order to get early editions to newstands before the strike deadline.

The strike, stemming from differences with the New York Publishers Association in negotiations for a new contract, was called after voting yesterday in which 1,648 of 1,693 union members balloted in favor of such action. The voting was supervised by the National Labor Relations Board.

The Publishers Association claimed that the strike, called despite a War Labor Board directive that the current contract should remain in force until a new one was reached, was illegal in the first place and became "contemptuously illegal" when the union failed to observe the strike deadline.

**POET'S KIN PASSES**  
Long Beach, Calif., June 30—(U.P.)—Mrs. Julia Wilson Riley, 96, sister-in-law of the poet, James Whitcomb Riley, and the last member of the family to bear the Riley name, died today.

### MORE SUGAR, MEAT GRANTED MINERS

Washington, June 30—(U.P.)—Miners in the San Francisco and Denver areas will be issued up to 50 extra red ration points monthly hereafter and one additional pound of sugar per man. Price Administrator Chester Bowles announced tonight.

This supplemental meat-fat-sugar ration for heavy industry workers will be extended after a trial period to all coal and ore mining regions, Bowles said.

Loggers, construction workers, foundry workers, deep sea fishermen and inland waterway seamen, some of whom already get extra rations, will be given further consideration.

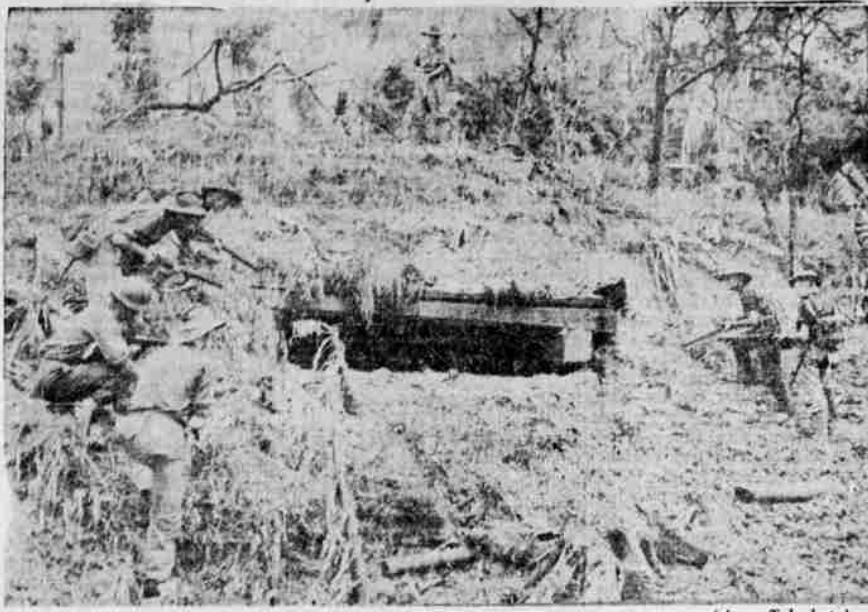
### Country Visitor To Metropolis 'Gypped'

Portland, Ore., June 30—(U.P.)—The pair who "took" a college professor from Corvallis for \$120 a week ago are believed to have made George F. Roggow of Cottage Grove, a similar victim. Police said today. Roggow told police he agreed to match he met in Portland's bus station. A second man joined them. Then one grabbed Roggow's billfold, helped himself to a \$100 bill and both vanished.

**COAST PAIR HONORED**  
Hq. Pacific Division Army Transport Command, Oahu, June 30—(U.P.)—Lt. Mary L. Hawkins, Redwood City, Cal., evacuation nurse, and T/Sgt. Ernest W. Miller, Newport, Ore., a surgical technician, were decorated today for keeping alive 24 litter patients when their plane crashed during the Palau campaign.

Closing time for Sunday Too Late to Classify \$30 Saturday afternoon. Please remember.

### Check Jap Pillbox on Borneo



(Acme Telephoto) Soldiers of the Australian Imperial Forces Division cautiously check a Jap pillbox as they advance toward Djoeia oilfield on Tarakan Island, off Borneo. Photo by Stanley Troutman, NEA-Acme photographer for War Picture Pool.

### WAR PRODUCTION CENTERS SHIFTED

Washington, June 30—(U.P.)—San Diego and 10 other major war production centers were shifted from critical to non-critical labor market classifications tonight as the result of declining production.

San Diego was shifted from group one (critical shortage) to group two (approaching balanced labor supply).

The great war production center of Detroit was shifted into a classification denoting a substantial labor surplus due to cut-backs and reconversion.

### Alfalfa Containing Phosphorous Found Preferred By Cows

East Lansing, Mich., (U.P.)—Soil chemists at Michigan State College have discovered that phosphorous in alfalfa is the cream in the coffee for Elsie, the cow.

Four and a half years of tests on 750 Michigan farms showed that cows, almost without exception, chose to graze on phosphorous-treated clover and alfalfa fields, to the neglect of the same roughage grown on untreated areas.

In most instances, researchers found, addition of phosphorous to the soil, increased grain yields and enriched clover meadows to such an extent that from 10 to 30 per cent more livestock could be supported on the same acreage.

### TEXAS BOMBSHELL SAYS NOT GUILTY

New Canaan, Conn., June 30—(U.P.)—Beautiful Imogene Stevens "the Texas bombshell" who killed the boy friend of her lover's nursemaid, while intoxicated and enraged, pleaded not guilty today to manslaughter.

**MEXICO HEARS**  
Mexico City, June 30—(U.P.)—Newspaper Ultimas Noticias said today Mexican communists had informed it that the Third International Communist Party is being reorganized and will soon launch a vigorous propaganda similar to that launched by Stalin in Europe.

### DIXIE DEMOCRATS KILL FEPC BOARD

Washington, June 30—(U.P.)—Southern Democrats blocked house action on the \$771,000 war agency appropriation bill tonight and thus signed a death warrant, effective at midnight, for the fair employment practices committee.

Their move also cut off other war agencies from their regular source of funds but they will be kept functioning through other arrangements until the dispute over the war agency bill and the FEPC has been resolved.

### Too Much Fishing Is Divorce Claim

Toledo, O., (U.P.)—A wife sought a divorce in Domestic Relations Court here on the grounds that her husband thought more of fishing than he did of his wife and family.

She testified that although her husband allotted her only \$3 each week for food, he would spend \$18 for artificial minnows.

**SOCIAL WORKERS CALL**  
Lt. Comd. M. A. Zelligs of the marine barracks, Klamath Falls, and Miss Louise Sullivan, Red Cross psychiatric social worker from Klamath Falls, were in Medford Friday for a conference of county social workers. Friday evening the two spoke at a meeting arranged by the Community Aids to Veterans committee and held at the courthouse. It was attended by staff members of the various social agencies who participated in round table discussion following the talks.

**MEAT FAMINE**  
Ketchikan, Alaska, June 30—(U.P.)—The meat shortage really hit Alaska today for the first time in this war. With no meat available for local markets, butchers closed their shops until Tuesday.

The first three-color electric traffic signal was installed in 1924.

### HAWAII NEEDS NURSES

Honolulu, T. H., June 30—(U.P.)—Acting Gov. Gerald R. Corbett today appealed to mainland nurses to come to Hawaii where a severe nurse shortage exists in territorial hospitals.

### Efficient Assistance for the Bereaved



Many people are at a loss to know what to do first, when called upon to make funeral arrangements in their grief. That is the time to turn to us—for expert guidance.

**PERL'S  
FUNERAL  
HOME**

LADY ATTENDANT  
426 WEST SIXTH ST.  
TELEPHONE 2675

**AMBULANCE  
SERVICE**

**GROCETERIA**  
Number 1  
Sixth and Central  
**OPEN  
TODAY**  
9 a. m. to 7 p. m.

### NAZI WEREWOLVES OPEN VANDALISM BRITISH REPORT

British Headquarters in Germany, June 30—(U.P.)—Fanatical Nazi werewolves about whom Propaganda Minister Paul Joseph Goebbels boasted during the last days of the Reich have begun operations in British and American occupation zones but details of their activities are a top military secret, allied intelligence indicated today.

Increasing numbers of jeeps and other military vehicles now are equipped with a sharp steel cutting edge mounted in front of the radiator to slash through

wires stretched across roads at night.

On one great superhighway a number of bridges have been wrecked which were intact when the allies arrived. There has been no official confirmation that the bridges were sabotaged by werewolves but it is difficult to see how it could have occurred otherwise.

News that the werewolves now are operating coincides with information that the Nazis again are functioning underground in some areas of the British and American zones. This was confirmed by Dr. Conrad Adenauer, German mayor of Cologne, who said the Nazis are appearing again in the Rhineland and the Ruhr.

### CREAM QUOTA CUT

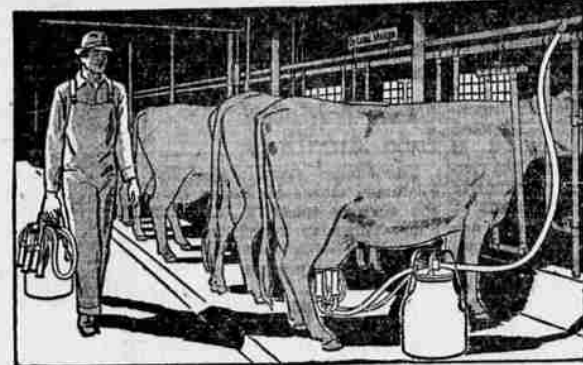
Sacramento, June 30—(U.P.)—Milk and cream quotas for civilian consumption will be reduced throughout California July 1.

### FILIPINO LEADER FOR PROTECTION

Manila, June 30—(U.P.)—Jose C. Zuleta, speaker of the Philippines House of Representatives, said today that the commonwealth should not be absolutely independent of the United States and that America should not completely relinquish her hold on the islands.

"Actually we should be a protectorate of the United States with American naval and aerial bases established on the islands," he said, basing his opinions on events of the war.

San Francisco's main Post Office and Federal building, built in 1905, survived the 1906 disaster.



**PERFECT SKIMMING • LARGER  
CAPACITIES • LONGEST WEARING**  
*De Laval Separators*

These new cream separators, with new streamlined bowls, offer PERFECT skimming with increased separating capacities—features that really COUNT on the farm. They cost no more than other better makes and give longer, more satisfactory service than any of them. You'll save the difference in first cost over ordinary separators in the first year of operation!

**HUBBARD-WRAY Co.**  
29 NORTH RIVERSIDE PHONE 4011

You Can Buy Them at WARDS!  
The Famous Paints and Varnishes of  
**DEVOE and RAYNOLDS**

**DEVOE'S FINE  
House Paint**

**3.45** Gal. in 5's  
House Paint Undercoat, 3.45 in 5's

The famous Devoe two-coat House Paint System consists of two different paints, each designed to do a special job. The UNDERCOAT seals the surface and lays a solid, non-blistering foundation. It guards against moisture, cracking, peeling. The TOPCOAT guards against sun and weather... resists fading and staining. The paint film wears down by slow even chalking. For beauty and durability, choose DEVOE, one of America's finest house paints.

A Library of Colors!  
Samples of 150 scientifically selected colors! With Devoe's famous "toners," it's easy (and fun) to secure the shade you're set on! See them at Wards!

**Montgomery Ward**

**To SERVE YOU BETTER**

**McCOY'S OFFER TO  
ROGUE VALLEY FARMERS**

A Special Informative  
**BROADCAST OVER KMED  
NEWS**  
ON THE FARM FRONT  
At 7:55 A.M. Daily  
MONDAYS THROUGH FRIDAYS

Condensed—Interesting  
Up-to-the-Minute 5-Minute Chats  
We Invite You to Tune In

**McCOY MACHINERY CO.**  
111 NORTH FIR MEDFORD, ORE.

BACK THE ATTACK BUY BONDS

**AC** SERVICE

HARDIE DEPENDABLE SPRAY EQUIPMENT

ALLIS-CHALMERS Tractors - Implements  
BAKER Bulldozers