

NEW BUILDING, SIXTH AND BARTLETT STREETS, HOUSES PIONEER PARTS FIRM



Ada Knackstedt
Office Manager



Doris Reh
Office Clerk



Helen Hinck
Office Clerk



Rowena Coleman
Bookkeeper



Louise Clark
Office Clerk



Mary Lewis
Office Clerk



Margaret Pence
Switchboard



Fred Gardner
Automotive Mechanic



Ray Brood
Automotive Mechanic



E. L. Hagebusch
Machinist



P. G. (Gus) Pedersen
Foreman Machine Shop



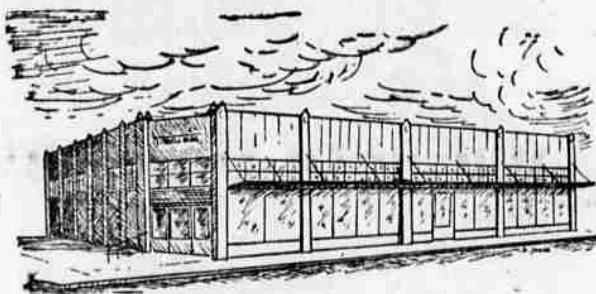
Paul Rothermel
Machinist



Chuck Davis
Machinist



Marvin Heidemann
Metalizer



Sketched by M. Jacobs

Rounding out 22 consecutive years in the automotive parts business, LITRELL PARTS, owned and operated by E. A. Littrell of Medford, moves this week to a new location at 319 Bartlett street.

The pioneer Medford firm, which operates branches at Yreka, California and Grants Pass, opened for business on Front street in 1923, moving two years later to 315 East Main street, where it operated until the present time.

The new building, a 100x100 gray stucco structure, includes all the features of an up to date automotive parts store. In addition to the wholesale and retail sales department, it houses a modern shop, where 10 men are employed in motor rebuilding, metallizing, crankshaft grinding and other custom work, a large shipping room, an office and ample storage room. Parking space for out of town customers has also been provided.

The personnel consists of 39 members, 27 of which are employed at the Medford location. Seven former employees of LITRELL PARTS are at present serving with the armed forces, and two honorably discharged veterans, Milton Pitts and Floyd Lewis, have recently returned to their former positions.

United Motor Service

DELCO — BATTERIES — IGNITION
NEW DEPARTURE and HYATT BEARINGS

GATES FAN BELTS

Radiator Hose—Gas Hose—Drives

Marquette Welders

PACKARD ELECTRIC

Battery Cables—Ign. Sets—Spool Cable
53 Years of Manufacturing

Borg Warner Clutch Plates

STANDARD MOTOR PRODUCTS

Starting—Lighting—Ignition

DU PONT

Paints and No. 7 Polishes

CONGRATULATIONS

to

LITRELL PARTS

Fine New Home

TRACY & COMPANY, Inc.

Portland, 9 Oregon

We CONGRATULATE LITRELL PARTS

as our

So. ORE. and No. CALIF.

Distributor

QUAKER STATE

MOTOR OILS—Superfine Lubricants

A FINE NEW HOME

for

LITRELL PARTS

ENGINEERED
for Leadership

BLACK & DECKER
Portable Electric Tools

Towson, Maryland
A. W. HELBUSH, Dist. Rep.

Littrell Parts Has a

COMPLETE MACHINE SHOP

Boring—Honing—Grinding
Reaming—Metallizing



They also recommend
Engineered Ring Sets
& Sealed Power Pistons

SEALED POWER CORP.
Cy Ward, Dist. Rep.

A salute to the growth and progress of LITRELL PARTS

In Their New Home at
319 East Sixth St.—Phone 2236

In a critical year for essential transportation Littrell Parts is an established, reputable source of quality parts and expert services... including, of course, dependable brake work and the Grey-Rock line of brake linings and clutch facings.

Grey-Rock

Balanced Brake Sets for Cars, Trucks, Trailers

H. A. Stephens, Dist. Rep.
To Make a Vehicle Last—Put Quality First

Your New Store Is a
Credit to the Territory
You Serve

Hastings Presents:
"Earl Godwin and the News"
Every Friday Coast-to-Coast
KMED—8:30 P.M.

Hastings Manufacturing Company • Hastings, Mich.
Hastings Mfg. of Canada, Ltd., Toronto

• IT'S A PRIVILEGE TO BUY WAR BONDS

HASTINGS STEEL VENT PISTON RINGS

TOUGH on Oil-Pumping GENTLE on Cylinder Walls