

# JOHN DAY'S BULL BRINGS TOP COIN IN HEREFORD SALE

John Day's Blue Moon ranch consigned top selling bull at the Rogue Valley Hereford Breeders' sale at Phoenix yesterday. The bull, Prince M. Onward 6th, was purchased by the Field and Spatz ranch, Medford, for \$1,100.

Although this was an inauguration sale, the consignors considered it an outstanding success and plans are being made to make it an annual affair. Buyers of Hereford cattle from the coast counties in both Oregon and California were present, as well as a good representation of cattlemen from Roseburg, Klamath Falls and Yreka.

Rogue Valley Hereford Breeders is a group composed of the principal breeders of Hereford cattle in the Rogue River valley, and Siskiyou county, Cal.

The sale was brought about by the Charley Brothers and Harry Furch who felt there was a place for such a sale in this section of the country.

Top ten bulls of the sale averaged \$435. Total average for the bulls was \$295 and the females sold at an average of \$225.

Col. Dudley, owner of the Southern Oregon Livestock company, was auctioneer.

Consignors to the sale were: Blue Moon Ranch, Medford; Charley Bros., Brownboro; Rancharia Cattle Co., Butte Falls; Hoy Hereford Ranch, Weed, Cal.; Mountcrest Ranch, Hill, Cal.; G. E. Pierce, Medford; Harry Furch, Medford.

Sales at the auction were as follows:

**Bulls**  
Lomond Lad 41st, bred by Charley Bros. to Everett Grisom, Central Point; Lomond Lad 34th, bred by Charley Bros. to Hamby, Ashland; Mountcrest Jupe 6th, bred by Mountcrest Ranch to Dunn, Ashland; Modoc Domino 6th, bred by G. E. Pierce to Silver Bros., Montague, Cal.; Prince M. Onward 6th, bred by John S. Day to Field and Spatz, Medford.

Prince Pola P. 2d, bred by John S. Day to J. O. Cooksey, Central Point; Modoc Domino 100th, bred by G. E. Pierce to Callie, Montague, Cal.; Lomond Lad 37th, bred by Charley Bros. to Ramby, Ashland; Lomond Laddie 3d, bred by Charley Bros. to E. E. Smith, Hill, Cal.; HHR Guardian 5th, bred by A. B. Hoy to Dodge, Medford; Siskiyou Ranger, bred by Harry Furch to E. E. Smith, Hill; Siskiyou Prince, bred by Harry Furch to Kubli, Applegate.

HHR Stanway D., bred by A. B. Hoy to Estramado, Gold Hill; Lomond Lad 33d, bred by Charley Brothers to R. A. Briggs, Roseburg; Lomond Lad 35th, bred by Charley Brothers to Strauss, Sams Valley; Prince L. R. Domino 14th, bred by John S. Day to Laurance, Roseburg; Modoc Domino 35th, bred by G. E. Pearce to Preston, Applegate; HHR Rafael D. 12th, bred by A. B. Hoy to Freshour, Yreka, Cal.; Siskiyou Lucky, bred by Harry Furch to Ruthford, Eagle Point.

Siskiyou Master, bred by Harry Furch to Lichen, Hornbrook, Cal.; Lomond Lad 38th, bred by Charley Bros. to E. E. Smith, Hill; Lomond Lad 40th, bred by Charley Bros. to Silver Bros., Montague; Siskiyou Kenny, bred by Harry Furch to Moser Ranch, Cave Junction; Siskiyou Lad, bred by Harry Furch to Mays, Central Point; Siskiyou Mike, bred by Harry Furch to Wade Wallace, Ashland.

**Females**  
Fan Domino, bred by Mountcrest Ranch to R. A. Briggs, Roseburg; Miss Jupe 11th, bred by Mountcrest Ranch to Martin, Rogue River; HHR Lady Guardian, bred by A. B. Hoy to Michaels, Ashland; HHR Lady G., bred by A. B. Hoy to Padgham, Medford; HHR Lady Rafael 7th, bred by A. B. Hoy to Briggs, Roseburg; HHR Blitzie G. 3d, bred by A. B. Hoy to Kubli, Applegate.

Modoc Lady Blchd. 103d, bred by G. E. Pierce to Martin, Rogue River; Carlos Lass, bred by Charley Bros. to Carly, Medford; Josephine Lass, bred by Charley Bros. to R. A. Briggs, Roseburg; Promino Lass 7th, bred by Rancharia Cattle Co. to

## Winner's Reward



(Acme Telephoto) "Slammin' Sammy" Sneed, White Sulphur Springs, Va., pro recently released from Navy, collects the kiss award from Golf Queen Mary Ann Bridgman as well as first money in the \$13,333 Los Angeles Open Golf Tournament. His 283 for 72 holes nudged out Byron Nelson and Jug McSpaden by a stroke.

Fred West, Applegate; Promino Lass 5th, bred by Rancharia Cattle Co. to Hugo von der Hellen; Promino Lass 6th, bred by Rancharia Cattle Co. to George Miller, Eagle Point.

## FRUIT GROWERS SHOP NOW OPEN

The newly completed repair shop of American Fruit Growers, Inc., is now open for business, according to an announcement today by George Green. The new building is of concrete construction with a floor space of 2400 square feet. Complete, thoroughly modern equipment has been installed for the repair of tractors, sprayers and general farm machinery.

On the staff of the new American Fruit Growers' repair shop will be four experienced mechanics, including one diesel specialist, according to Green. Parts for Cletrac and Oliver tractors will be carried in stock and factory parts for other makes of tractors, sprayers and machinery will be available. The new repair shop is located on south Fir street opposite the new plant and offices of American Fruit Growers, Inc.

## LETTERING CLASS OPENING JAN. 24

A course in lettering will be offered at the Senior High school beginning Wednesday, January 24 and lasting for 12 weeks. E. H. Hedrick, superintendent of city schools announced today. The class is open to any adult in the county, he said, and will meet every Wednesday from 7:30 to 9:30 p. m., under sponsorship of the State department of Vocational Education and Medford High school.

Harry Hinman, advertising manager of Mann's department store, will be instructor for the sessions. Persons interested in advertising will find the instruction useful, Hedrick said, and are invited to call Lester Harris, principal of the High school or consult Harry Hinman on enrollment before next Wednesday.

## P.-T. A. Activities

Jackson P.-T.A.  
Mrs. Fred Rankin, executive secretary of the Jackson County Red Cross chapter, will speak at the meeting of the Jackson Parent-Teacher association tomorrow in the music room of the school at 3 p. m. There will be a business meeting and community singing. A social hour will be held with Mrs. Medley and Mrs. Webber serving as hostesses.

## OUTSIDE GROUPS PLAN TO ATTEND JAYCEE BANQUET

About 30 members from the Grants Pass Junior Chamber of Commerce will attend the Medford club's formal charter banquet at the USO Saturday night. Klamath Falls chapter, which organized the Medford club, will send delegates to the meeting, it has been announced by local officials. During the week of January

14 to 21 the 25th anniversary of the national Junior Chamber is being observed by over 800 junior chamber groups in North America and this week will be climaxed by banquets throughout the country and the awarding of Distinguished Service keys to outstanding junior citizens of each community where the junior chamber functions.

Since its organization last October 17 the local group has been active in community service. Members worked to get voters out at the November general election, assisted with the Sixth War Loan drive and sponsored a "call Santa Claus" program during the Christmas holidays.

Closing time for Classified Ads 5 p. m. Too Late to Classify 12:30 p. m.

## Juice From Butts Of Asparagus Now Of Scientific Use

Albany, Cal.—(U.P.)—The great promise of heretofore discarded asparagus butts has been discovered at the Western Regional Research laboratory, U. S. department of agriculture, according to a recent announcement.

Seeking an economic use for the 50,000 to 100,000 tons of asparagus butts and trimmings thrown away yearly by vegetable packers, scientists have found that juice pressed from these butts can be used as a culture medium to produce bacterial protease.

The enzyme, bacterial protease, may be used for chill-proofing malted beverages, degumming silk, deproteinization of

rubber latex, recovery of silver from used photographic film, the cleaning of delicate fabrics and other industrial purposes.

Researchers predict that asparagus-butt juice may well replace other vegetable materials now scarce.

**COLDS**  
Believe misery, as most mothers do. Rub the throat, chest and back with time-tested **VICKS VAPORUB**

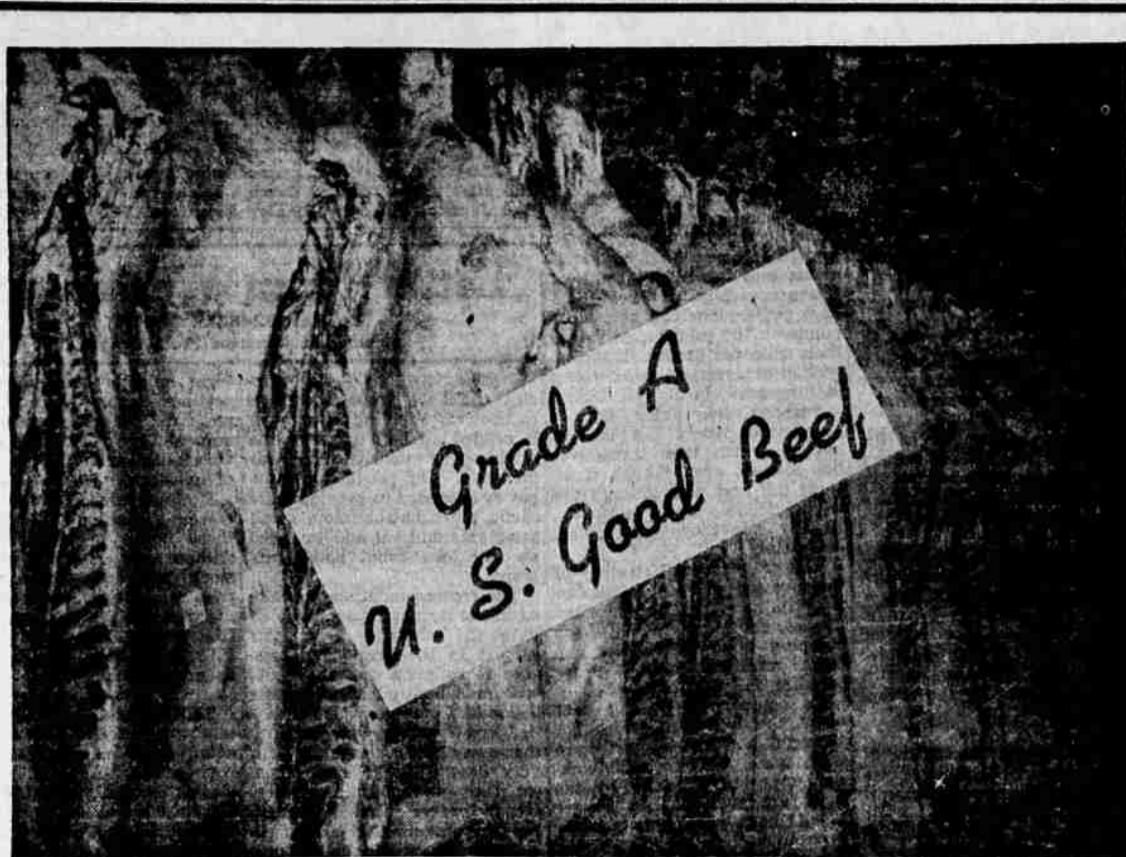
**WASHING MACHINES REPAIRED**  
Parts & Service on All Makes  
B & B Washer Shop  
406 E. Main Phone 5302

## HOGS GROW FASTER—

When fed a balanced ration containing animal protein and minerals. Now that the turkeys are out of the way, we have a surplus of meat and bone meal which we are mixing in a good hog-growing ration, which we are selling for only \$2.25 per 80-lb. bag. 400 pounds of this feed will produce as much pork as 500 pounds of barley and do it quicker. That's what everybody wants, more meat for less money.

## MORTON MILLING CO.

Jackson St. on Railroad



## HERE IT IS!

For your selection—  
The most delicious beef that money can buy.

Butter-tender steer beef steaks and mouth-watering juicy roasts. Yes, the very cream selected from

## Oregon Grain Fattened White Face Herefords

Additional meat value has been added to these fancy steer beavers through up-to-the-minute scientific methods of feeding.

All grades of beef now require the same number of points—fancy, good, commercial and utility, so when you spend those valued ration points, get the best at SAFEWAY. Satisfy the family appetites tonight. Take home a roast or steak cut from these grain fed Grade "A" steer beavers.

Steaks	Roasts	Stews and Lower Priced Cuts	ROASTING CHICKENS
U. S. GOOD GRADE A	U. S. GOOD GRADE A	U. S. GOOD GRADE A	FANCY LOCAL BIRDS
T-Bone . . . . lb. 48c (12 pts.)	Standing Rib . . . . lb. 32c (7 pts.)	Short Ribs lb. 20c (1 pt.)	<b>lb. 41c</b> (Point Free)
Rib . . . . . lb. 32c (8 pts.)	Rump . . . . . lb. 26c (6 pts.)	Boiling Beef lb. 26c (1 pt.)	
Sirloin . . . . lb. 40c (11 pts.)	Pot Roast . . . lb. 27c (3 pts.) Blade and Arm Cuts	Ground Beef lb. 28c (4 pts.)	
Round . . . . . lb. 38c (13 pts.)			

Smelt Fresh Columbia River . . . . . lb. 19c

Eggs Grade A Large . . . . . Doz. 51c  
Fresh daily from Mrs. Mae Cook's poultry farm.

Sauerkraut Quart. . . . . 15c  
Made from No. 1 Shredded Cabbage.

Weiners Serve with Sauerkraut tonight 2 lbs. 35c

Coffee Nob Hill Whole Roast . . . . . 1-lb. bag	20c
Coffee Airway Whole Roast . . . . . 1-lb. bag	17c
Tea Canterbury O. P. . . . . 1/4-lb. pkg.	22c
Salt Snow-white iodized and plain . . . . . 26-oz. pkg.	7c
Rice Blue Rose Fancy . . . . . 3-lb. pkg.	31c
Flapjack Flour Alber's . . . . . 2 1/2-lb. bag	22c
Pancake Flour Susanna . . . . . 40-oz. pkg.	15c
Flour Kitchen Craft — 5-lb. sack 23c	50-lb. bag \$1.79
Ritz Crackers . . . . . 1-lb. pkg.	19c
Kraft American Cheese . . . . . 1-lb. pkg.	40c
Catsup Red Hill (30 pts.) . . . . . 14-oz. bottle	13c
Tomato Juice Sunny Dawn (40 pts.) . . . . . 46-oz. can	21c
Grapefruit Juice Town House Sweetened. No. 2 tin 13c. 48-oz. tin 10 points and 20 points	30c
Kellogg's Pep . . . . . 3 pkgs.	25c
Wheat Germ Fisher's . . . . . 1 1/4-lb. bag	25c
Quaker Oats Reg and Quick . . . . . 3-lb. pkg.	28c
Ralston Wheat Cereal . . . . . 1 1/2-lb. pkg.	21c
Wheaties . . . . . 8-oz. pkg.	11c
Post Toasties . . . . . 11-oz. pkg.	8c
Bleach White Magic . . . . . 1 gal. bottle	32c
White King Toilet Soap . . . . . bar	5c
Toilet Soap Lux . . . . . bar	5c
Linit Starch . . . . . 12-oz. pkg.	10c

Margarine Sunny Bank (2R) . . . . . 1-lb. pkg.	18c
Shortening Royal Satin . . . . . 3-lb. glass	59c
Mayonnaise NuMade . . . . . 32-oz. jar	47c
Salad Dressing Duchess . . . . . 32-oz. jar	35c
Cudahy's Tang (3R) . . . . . 12-oz. can	29c
Oats Morning Glory, Reg. and Quick . . . . . 48-oz. pkg.	26c
Peets Granulated Soap . . . . . 33-oz. pkg.	26c

**Preserves**  
Kerr's Assorted  
2-lb. gl. . . . . 49c

**Peanut Butter**  
Real Roast  
2-lb. jar . . . . . 39c

**Peanut Butter**  
Beverly & Howdy Coarse Grind  
2-lb. jar . . . . . 45c

## • SAFEWAY NATURALLY FRESH PRODUCE •

ARTICHOKES Large Sizes 2 for	15c
BROCCOLI Locally Grown	lb. 18c
Banana Squash Whole or Half	lb. 5c
CABBAGE Crisp Solid Heads	lb. 7 1/2c
ORANGES California Navels 10-lb. Mesh Bag	99c

**APPLES**  
Fancy and Extra Fancy DELICIOUS — WINESAPS  
lb. 12c

**POTATOES**  
Klamath Netted Gems U. S. No. 1 — Cwt.  
\$4.59  
U. S. No. 2 — 50-lb. Bag  
\$1.79

Dependable flavor in every jar



**Schilling**  
VACUUM PACKED COFFEE

# SAFEWAY