

Nazis Flee From Western Bulge; Start New Push in Northeast France

Weather

Forecast: Mostly cloudy tonight and Wednesday. Little change in temperature.
Temp. 46
Highest yesterday 46
Lowest this morning 36

MEDFORD



TRIBUNE

United Press—Full Leased Wire

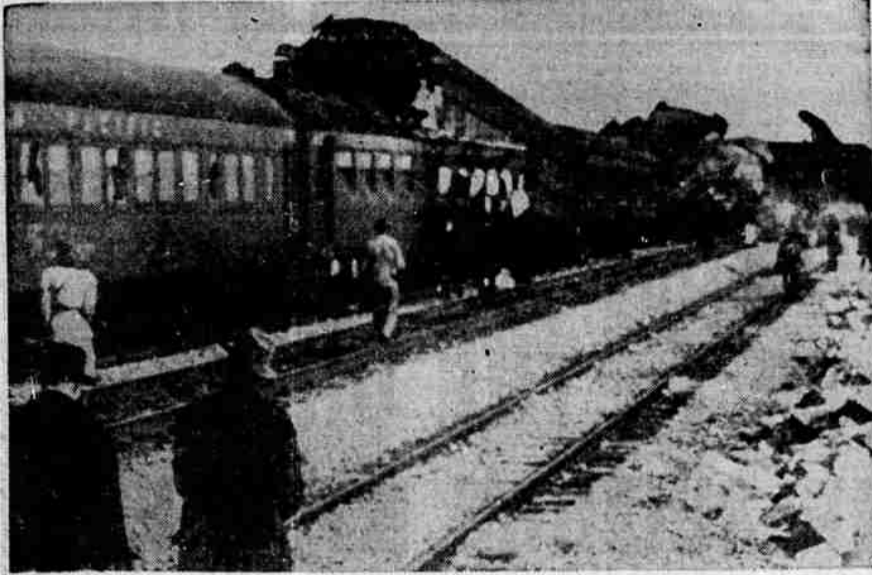
United Press—Full Leased Wire

Thirty-ninth Year

MEDFORD, OREGON, TUESDAY, JANUARY 2, 1945

NO. 239.

Utah Train Wreck Takes Many Lives



At least 48 persons were killed and more than 100 injured in this wreck of two sections of the Southern Pacific's crack westbound Pacific Limited passenger train near the shore of Great Salt Lake, 14 miles west of Ogden, Utah. Most of the dead were in the rear coach of the first section, shown here telescoped after the 12-car second section plowed into it.

S. P. TRAIN WRECK ADDS 48 TO LIST OF HOLIDAY DEAD

By United Press
Deaths caused by accidents during the three-day holiday week-end reached 241 today with the collision of two sections of a Southern Pacific passenger train claiming 48 lives.

Ogden, Utah, Jan. 2—(U.P.)—Traffic was resumed over the Southern Pacific railroad today as officials tentatively scheduled an investigation into the wreck of the Pacific Limited in which 48 persons were killed and 76 others injured early Sunday in a disastrous rear-end collision 22 miles west of here.

Search For Dead In Wreck



Using crow bars and torches, rescue workers (arrow) fight their way into twisted cars of the Southern Pacific's Pacific Limited, wrecked near Ogden, Utah.

CHAPLIN COUNSEL RAPS GIRL'S STORY IN WINDUP PLEA

Hollywood, Jan. 2—(U.P.)—Charlie Chaplin's attorney, making his final argument to a jury of seven women and five men today, hammered away at Joan Barry's story of the month of December, the one in which she says the comedian caused her to become a mother.

Two Possibilities
At least two other men could have been the father of the child, he set forth, citing testimony of Dr. Russell Starr that the period of gestation is 270 days from conception, with a possibility of two weeks variance either more or less.

Mr. O. C. Lassiter, former assistant county attorney in Tulsa, Okla., has testified that Miss Barry admitted to him that she spent at least a day in the Mayo hotel in Tulsa January 12 with oil man J. Paul Getty.

New Rocket Bomb Will Rule Pacific Is Japanese Boast

By United Press
A Tokyo broadcast, beamed to Latin America, asserted Tuesday that a Japanese-manufactured rocket bomb would make its debut in the Pacific "soon."

RUSSIANS CAPTURE BUDAPEST HOUSES

London, Jan. 2—(U.P.)—Red army troops captured 232 blocks of houses in the eastern part of Budapest today and 63 blocks in the western half of the Hungarian capital, a Moscow communique said tonight.

SIR BERTRAM RAMSEY, NAVY CHIEF, KILLED

Paris, Jan. 2—(U.P.)—Adm. Sir Bertram Ramsey, naval commander-in-chief under Gen. Dwight D. Eisenhower, was killed today in an airplane accident while on his way to a conference in Belgium.

TAX SUIT FILED
Hollywood, Jan. 2—(U.P.)—Movie Producer B. P. Schulberg today was named defendant in a federal government suit charging he owes \$101,808.14 income taxes and interest for 1934-35.

Federal Grand Jury Eyes Ward Seizure As Store Managers Replaced by Army

TWO WAREHOUSES IN DETROIT AREA ALSO TAKEN OVER

Eight Company Officials in St. Paul Refuse to Obey Orders or to Leave Plant.

Chicago, Jan. 2—(U.P.)—A federal grand jury met in special session today to investigate the government's seizure of Montgomery Ward and company as the army moved swiftly toward a snowdown on its ability to operate the retail store and mail order firm's facilities in seven cities without co-operation from the company's top executives.

U. S. District Attorney J. Albert Woll went before the special session of the December-January grand jury to ask investigation of whether the company violated the Smith-Connally act and whether there was any conspiracy against the government in the company's resistance to the seizure and operation of the plants by the army.

Other rapid-fire developments in the Montgomery Ward case today included:

1. Maj. Gen. Joseph Byron, army officer assigned to operate the seized Ward facilities, announced Ward officials refusing to co-operate with the government's operations would be removed and that all other steps necessary to the army's operation of the facilities would be taken.
2. Four store managers for Montgomery Ward in the Detroit area were removed and replaced by army officers.
3. The army seized two additional Ward warehouses at Detroit.
4. Eight Ward officials in St. Paul refused to accept army appointments and seven refused to leave the plant. They were replaced by a staff headed by Maj. Paul A. Getty, but no effort to evict the seven who refused to leave was made.

Woll did not elaborate on what violations of the Smith-Connally act might be involved in the grand jury investigation but it was the company's refusal to grant certain union contracts in compliance with war labor board orders that led to the government seizure of the Ward facilities last Thursday.

LINDBERGH KIDNAP "JAFSIE" PASSES

New York, Jan. 2—(U.P.)—Dr. J. F. Condon, 84, intermediary in the Lindbergh kidnaping case, died today ten years to the day after Bruno Richard Hauptmann went on trial for the murder of Charles A. Lindbergh, Jr.

SAIPAN BOMBED BY JAP PLANE

Pacific Fleet Headquarters, Pearl Harbor, Jan. 2—(U.P.)—A lone Japanese plane dropped a single bomb on American air installations at Saipan Monday, and Liberators of the strategic air force bombed Iwo Jima Sunday for the 25th consecutive day. Pacific fleet headquarters reported today.

Montgomery May Take Command Of All West Front

London, Jan. 2—(U.P.)—Speculation mounted today that Marshal Sir Bernard L. Montgomery, Britain's No. 1 war idol, may be named deputy supreme commander for the western front with jurisdiction over all seven allied armies.

Swedish reports that Montgomery will be given command of all ground forces coincided with increasing criticism that Gen. Dwight D. Eisenhower, the supreme commander, has been saddled with so many political and economic problems that he has been unable to devote sufficient time to coordinating ground operations.

Military informants said Eisenhower's burdens have been increasing enormously in the past three months. Therefore, if a shakeup should occur, it would not be due exclusively to the recent German counteroffensive in the Ardennes, they said.

SABOTEURS TRYING TO LAND IN U. S. HOOVER DECLARES

New York, Jan. 2—(U.P.)—J. Edgar Hoover, director of the federal bureau of investigation, warned today of a new "intensified" effort by Germany to send saboteurs to this country as he revealed the arrest of two agents landed a month ago by submarine on the coast of Maine.

The men, arrested in New York, were William Curtis Colepaugh, 26, a native of Connecticut with a discharge from the U. S. navy, and Enrich Gimpel, 35, a German citizen, interned for a time in this country but sent home as an exchange prisoner only to return as a spy. They landed November 29 in Frenchman Bay.

268 Divorces and 587 Marriages In County Last Year

Divorces filed in Jackson county in 1944 totalled 268, and 587 marriage licenses were issued, according to records of the county clerk's office. The marriage licenses were 377 less than in 1943, which had a record breaking total of 964, due largely to many Camp White soldiers being married here.

The first 1945 marriage of record was between Roy Beal and Grayce McCarthy both of Siskiyou county, Calif. They procured their license here, December 11 last, and were married yesterday by Justice of the Peace W. P. Tucker, at his home.

ROOSEVELT HINTS BIG THREE PLAN EARLY PALAVER

Congressional Leaders Also Told Annual Message Will Be Delivered Saturday.

Washington, Jan. 2—(U.P.)—Congressional leaders said today that President Roosevelt had "indicated" to them that he would meet "sometime soon" with Prime Minister Winston Churchill and Premier Josef Stalin.

The information was developed at the leaders' first conference of the year with the president, in preparation for the new congress which convenes tomorrow.

HANNA CONDITION STILL UNIMPROVED

Reports from Portland this afternoon were to the effect that the condition of Judge Herbert K. Hanna, circuit court judge seriously ill in a Portland hospital, remains unimproved. A United Press wire bulletin read, "Judge Hanna condition semicomatose with periods of normal consciousness."

Judge Hanna was taken to Portland the middle part of last week after an illness of several days. When the seriousness of the judge's condition became apparent, the state supreme court assigned Circuit Judge James W. Crawford of Portland as temporary judge for this district.

Mysterious Balloon Is Found Near Estacada Power Plant

Portland, Ore., Jan. 2—(U.P.)—Army officers and FBI agents today velle in secrecy results of their intensive investigation of a large balloon—possibly of Japanese origin—found in wooded country about 38 miles southeast of Portland.

Belief that the Japanese could launch long-range, small-scale paper-balloon forays against the west coast of North America from bases between Formosa and the Kuriles was expressed by Professor P. E. Church, former army-navy oceanography instructor, in Seattle.

The balloon was discovered by unidentified residents of the area near Estacada, site of a large power plant. Several miles away lies an important part of Portland's water system—the Bull Run headworks.

DRAFT OF 4-F'S FOR WAR WORK IS BYRNES REQUEST

Reconversion Director Has Legislative Plan for Tight Control Over Manpower.

Washington, Jan. 2—(U.P.)—An administration request for new laws to tighten government controls of manpower, including a draft of 4-F's for essential war work, faced the 79th congress today on the eve of its opening session.

The request, together with other recommendations to bolster the war effort on the home front, was made by War Mobilization and Reconversion Director James F. Byrnes in a 20,000-word report to the new congress which begins its two-year existence at noon tomorrow.

ARTHUR CANNON LEAVING FRIDAY FOR NAVY DUTY

Arthur M. Cannon, manager of the Fluhrer Bakeries, has been commissioned a junior-grade lieutenant in the navy and will leave Medford Friday night to report to naval headquarters in Seattle. Cannon received word December 23 of his appointment and copies of his reporting orders arrived this morning.

For the present management of the bakery chain will be divided between Mrs. William H. Fluhrer, Fred Holland, manager of the Klamath Falls bakery, Ray Harrison, sales manager, and Eugene Ferrall, chief accountant for the bakeries. It was stated this morning that there is a possibility that Major Fluhrer, owner of the bakeries, now overseas with the air corps, would be able to return to active management of the firm in the not too distant future.

JUDGE J. B. COLEMAN CONTINUES IMPROVE

County Judge J. B. (Bin) Coleman, following an attack Sunday, was reported by members of his family, as showing improvement today. He has been ill at his home for the past ten days from a coronary attack, and his condition has been changeable.

This was the third mysterious balloon recently discovered in the northwest. A balloon identified as Japanese was found near Kallispell, Mont., about three weeks ago. A second mysterious balloon of unidentified origin was found near Tacoma, Wash., last week.

PUSH NEAR BITCHE GAINING HEADWAY ON 50-MILE FRONT

Nazi Aggression Spreading Into Saar Valley; Heavy Attack Near Wulferdingen

Paris, Jan. 2—(U.P.)—German forces were reported fleeing the western-most bulge of the Belgian salient today, but to the southeast they were building up an attack of considerable strength on a front of about 50 miles between the Saarland and the upper Rhine.

The new German push was centered in the Bitche area of northeastern France. Supreme headquarters announced that around Bitche the nazis gained a mile and a half, cut the road running five miles southeast to Bannestin, probably captured the latter town and still were pressing on.

Attack Spreading
The Germans now are active throughout the border area from Bitche to the Rhine, official sources reported. A field broadcast said the nazis aggressiveness was spreading westward into the Saar valley, where a heavy attack was launched in the area of Wulferdingen 13 miles southeast of Saarbrücken.

Lt. Gen. George S. Patton's 3d army units chopped into the south flank of the Ardennes salient gained another couple of miles in a number of sectors up to yesterday morning, supreme headquarters reported. They recaptured Molroy, 11 miles west of Bastogne, and southwestern anchor post of the nazis salient, which had changed hands repeatedly in the previous fighting. Closer to Bastogne, the doughboys seized Hubertmont, six miles east of the Belgian road center; Harlange six miles southeast, and Neffe, two miles east.

Patton's gains had ironed out the German bulges on each side of Bastogne, removing any current threat to the citadel, while his units pushed on to the north toward Houffalize, 10 miles above Bastogne on the Liege highway. A German communique said the Americans were trying to break through toward Houffalize, a possible hint that they were approaching the town.

Nazis See Thrust
The steady gains of the 3d army threatened to cut off the western half of the German salient, and it was this mounting threat which apparently prompted the nazi withdrawal from the bulge west of the line through Bastogne.

The German pullout apparently was reflected by a front report which said that in the area of Hottion, along the northwest rim of the salient, patrol thrusts nearly two miles deep into the enemy positions failed to elicit resistance.

Byrnes also suggested revision of draft deferment standards for men in agriculture in anticipation of increased calls by selective service.

The Byrnes report provided the first glimpse of the legislative program which the Roosevelt administration will propose to the new congress as its part in speeding victory and laying the groundwork for enduring peace with economic prosperity.

Revised Farm Rule
Byrnes also suggested revision of draft deferment standards for men in agriculture in anticipation of increased calls by selective service.

For the present management of the bakery chain will be divided between Mrs. William H. Fluhrer, Fred Holland, manager of the Klamath Falls bakery, Ray Harrison, sales manager, and Eugene Ferrall, chief accountant for the bakeries. It was stated this morning that there is a possibility that Major Fluhrer, owner of the bakeries, now overseas with the air corps, would be able to return to active management of the firm in the not too distant future.