

MANY TURN EYES TO ROGUE VALLEY AS PLACE TO LIVE

Chamber of Commerce Notes Increase in Inquiries from All Parts of Country.

An increasing interest in the Rogue River valley is being shown by people from all sections of the country and is reflected in a growing number of inquiries received at the Jackson County Chamber of Commerce office in Medford. Requests for information are now averaging between 150 and 200 a month, according to Frank Hull, manager, and are increasing steadily.

It is obvious from the type of letter being received that the inquiries for the most part come from citizens of a substantial type, Mr. Hull states, and that the prospective residents are persons who will be an asset to the community when they arrive. The Chamber staff has observed that thousands of dollars' worth of property has already been sold in recent months to people whose first information about the district was gained from the Chamber of Commerce. The inquiries, originating in practically every state of the union, seek information about the climate, the cultural advantages of the district, the schools, religious institutions and about business conditions. The later type of question is in the minority, Mr. Hull states, the people for the most part apparently being more interested in the type of living conditions than in ways to make money. The letters come from business officials of nationally known and women and from many persons seeking a place to retire.

Mrs. Glen Jackson, of the staff of the Chamber of Commerce for the past year, handles all these requests and makes every effort to give complete information, the manager states.

FARRAGUT STREP PROBE IS ASKED

Spokane, Wash., Oct. 12—(U.P.)—Rep. Warren G. Magnuson, D., Wash., disclosed today that Chairman Carl Vinson of the house naval affairs committee has asked him to conduct a personal investigation of the outbreak of streptococcus infection, including scarlet fever, at the Farragut, Ida., naval training center.

Magnuson said "the navy's best streptococcus specialists, physicians formerly with the Rockefeller Institute, are being rushed to the center to find a way to halt the spread of the infection."

He revealed that the outbreak had "placed several hundred recruits in the hospital with scarlet fever and other hundreds with sore throats."

8TH FORCE MOVES
Washington, Oct. 12—(U.P.)—An army air forces spokesman disclosed today that the entire U. S. army 8th tactical air force has been moved from the British isles and is now based in airbases in liberated France and Belgium.

DIFFERENT WORLD FOR G I
Mexico, Tex.—(U.P.)—Staff Sgt. J. C. Haddock, home on furlough, described his station in the hinterlands of China. It was another world entirely, he said, where tourists had never penetrated, and the inhabitants had never heard of white people.

ENGINEER FIREMEN
Fort Lewis, Wash.—(U.P.)—An engineer fire-fighting school, the only one in the country, has been moved to Fort Lewis, from Camp Pontchartrain, La. It will teach engineer fire-fighting platoons control of fires that occur in gasoline and oil reserves, ammunition dumps, warehouses, oil wells and other storage points in combat areas.

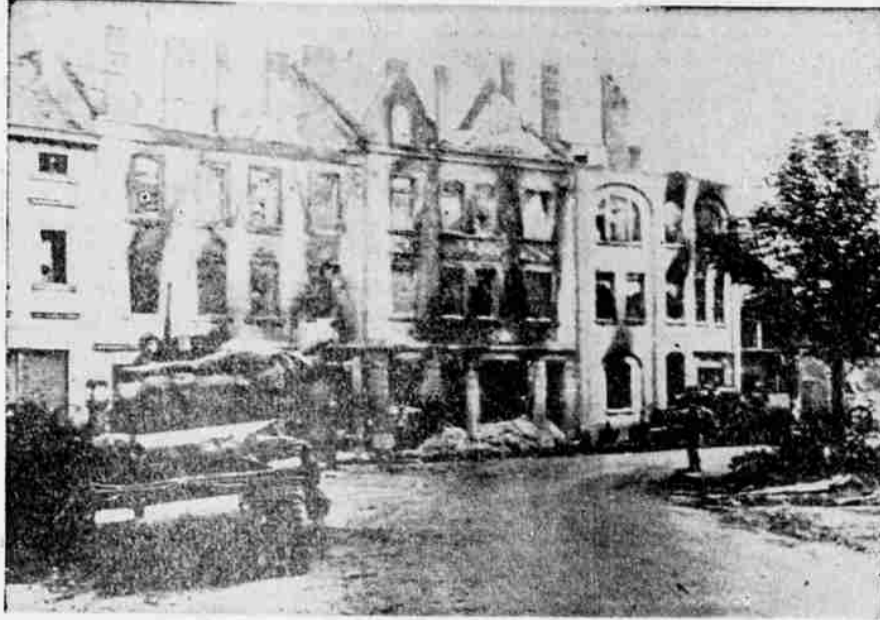
PIN-WORMS At Last—A Real Treatment!

You may not realize how many of your neighbors—grown-ups as well as children—have Pin-Worms at this very moment. People don't talk about this nasty infection. Sometimes they are too embarrassed to mention the embarrassing, itching, burning and up to now they have usually suffered in silence because they have not known of any effective way to deal with this dreadful pest that lives inside the human body.

Important Medical Discovery
Today, thanks to a valuable scientific discovery, a remarkable new treatment has been made possible. It is based on a special drug, known as gentian violet. This drug is the vital element in P.W. the new Pin-Worm tablets developed by Dr. D. Jayne & Son, America's leading specialists in worm, medicine. P.W. tablets are easy and easy to take, and they act in a special, gentle way to destroy Pin-Worms. It is very easy to "catch" this nasty infection, and the ugly creatures can cause real distress. So watch for the signs that may mean Pin-Worms: Itching seat, itchy, itchy stomach, bed-wetting, nervous disposition. If you suspect Pin-Worms, get a box of P.W. right away and follow the simple directions carefully.

P.W. means Pin-Worm relief!

Devastation in Germany



As Allied forces switch their drives from Holland to the Belfort Gay area and reported new gains, some idea of the severity of the fighting going on inside Naziland is shown in this picture taken in Stolberg, Germany. Shelled and bombed buildings resulted from battle that took place between American and German troops in that town. Signal Corps photo.

JACKSON COUNTY FARM NOTES

Compiled by County Office O. S. C. Extension Service

October 30 Deadline On Dairy Subsidy Payments

All dairymen who have not applied for milk and cream subsidy for sales during July and August, should apply for the same prior to October 30, which is the deadline for payment of July and August sales.

With added effort needed to meet the winter rates for dairy production payments should assist county farmers in doing their part to narrow the gap between production and demand. The winter rates for dairy production payments which became effective September 1 are 70¢ per hundred weight for milk and 10¢ per pound for butterfat.

The importance of increasing or maintaining milk production at the highest possible level is well illustrated for farmers by the recent necessity to raise the ration value of creamery butter to 20 points. This action was necessary due to the small supply available and the expected seasonal decline in production which indicates October civilian supplies of butter will be 10,000,000 pounds less than in September.

More than 1,750,000 milk producers—the largest number of any payment period since the dairy production program was initiated—received a total of \$64,153,228 in dairy production payments on sales of 13,388,500 pounds of milk and 160,308,340 pounds of butterfat during May and June. These payments are made to offset increase in dairy production costs in order to maintain milk production at the high level necessary to meet requirements. Since the program became effective October 1, 1943, producers had received a total of \$222,862,000 on production through June.

Oregon farmers had shared \$2,931,534.46 of this national total. For the May-June period, dairy farmers in the state received \$847,563.57 in dairy production payments.

Turkey Set-aside Revised to Aid Army

The war food administration amended the turkey set-aside order that is intended to assist the U. S. quartermaster corps to acquire at least 60,000,000 pounds to supply all of the American fighting forces stationed overseas and in this country. The amendment requires that owners of 5,000 pounds or more in storage must report and offer them (if not previously offered) to the QMC and that the set-aside will not be terminated until enough turkeys have been obtained. The new measure is intended to speed up offerings and hasten termination of the set-aside order. Holders of turkeys, while the order remains in effect, are not to be relieved of their responsibility until the turkeys they hold have been offered and either sold to or rejected by the QMC.

—R. G. FOWLER, County Agent.

Farm Truck Gas Rations Mailed

Truck gas rations for farmers have all been mailed out by the OPA. If any farmer has not received his fourth quarter allotment he should at once contact the OPA and determine the reason. The local ODT office is closing and the records being moved to Portland on October 15. If the OPA did not mail out the fourth quarter allotment of

MONEY TO LOAN!
ON JEWELRY CAMERAS AND MUSICAL INSTRUMENTS Used and unneeded jewelry at great savings
700
6.00-16
PEOPLES LOAN CO.
229 1/2 E. Main Street
State License P 157
PROMPT SERVICE NO CERTIFICATE REQUIRED!

ELKS WILL HAVE OVERSEAS BOXES

gas due to incomplete records, it will be an easy matter to straighten it locally. After October 15, however, it will be necessary to contact Portland to get the information. Prompt attention to this matter may save considerable delay.

Peach Spray Due For Blight Control

Peach and apricot trees should be sprayed during the next two weeks for control of peach blight and peach leaf curl.

A properly prepared 10-10-100 homemade bordeaux is unsurpassed for this spray. If commercially prepared bordeaux is used, use 20 pounds per 100 gallons. If a copper substitute is used, it should be used seven pounds per 100 gallons. The addition of one quart of oil emulsion to 100 gallons of any of these sprays will improve them. Spray thoroughly.

—C. B. CORDY, Assistant County Agent.

HENDERSON SEES TROUBLE UNLESS PLANS SPEEDED

Chicago, Oct. 12—(U.P.)—Leon Henderson, former head of OPA and now chairman of the Board of the Research Institute of America, said today that "if the pace of preparing for peace is not increased (in the United States) we will have an unmanageable amount of unemployment within a month after the end of the European war."

Henderson told the 14th biennial congress of the cooperate league that the U. S. must move drastically in revision of our tax system and in planning for emergency public work.

"The biggest source of national income (in the postwar period) sufficient to maintain a high level of employment will be in foreign trade," Henderson said, "but added that he was pessimistic about formation of an economic foreign policy."

JEWS ACCUSED
London, Oct. 12—(U.P.)—Middle east authorities in a special communique today charged Jewish terrorists in Palestine with committing crimes of violence "with the deliberate intention of bringing about by force developments favorable to the realization of political aims."

Use Mail Tribune Want Ads

NOW PRE-WAR MILEAGE FROM Firestone FACTORY-CONTROLLED RECAPPING GRADE A CAMELBACK
700
6.00-16
PROMPT SERVICE NO CERTIFICATE REQUIRED!

ICKES ANSWERS DEWEY CHARGES ON CROP VALUE

Salt Lake City, Oct. 12—(U.P.)—Secretary of Interior Harold L. Ickes has answered Gov. Thomas E. Dewey's charge that the Roosevelt administration had neglected the west by declaring that the western state's average crop value per acre under the bureau of reclamation's irrigation program "has increased from \$30.10 under a Republican administration to \$95.84 today."

Speaking before a Democratic rally last night Ickes said that power installations on bureau of reclamation projects are now more than 18 times the total capacity installed in 1933.

"Since 1933 we have 'neglected' the west so much that the value of farm products from an acreage irrigated by the bureau of reclamation has increased 360 per cent," he said.

The present administration, under the Taylor grazing act, has made the livestock industry a business instead of a gamble by making 142,000,000 acres of controlled federal range available to livestock owners, Ickes asserted.

Throughout his address Ickes

Dramatic Role



Now on the screen at the Craterian is Don Ameche in "Wing and a Prayer," a drama of aircraft "Carrier X" with Dana Andrews, Charles Bickford and Sir Cedric Hardwicke.

referred to Dewey as "Mr. Gullible" and labeled Dewey's recent cross-county campaign tour "Gullible's Travels."

Sams Valley School Parents Are Invited

Sams Valley school P.T.A. will hold election of officers and registration of new members Friday, Oct. 13 at 8 p. m. in the school auditorium. A program will be given by the students. A social hour will close the evening.

All parents of Sams Valley school students are urged to be present in order to form a P.T.A. unit, it was stated today.

Schilling Pepper
full pungent flavor for zestful goodness

The way you bake at home is different from commercial baking... for home baking you need home-type flour



YES, MY BAKED FOODS ARE LIGHTER AND MORE TENDER NOW I'M USING KITCHEN CRAFT HOME-TYPE FLOUR

Home-type Kitchen Craft Flour gives finer results in all home baked foods

Kitchen Craft is light-bodied: It mixes smoothly and quickly, with other home-type ingredients to give fine even texture in all your home baked foods.

Kitchen Craft is properly milled: Retains desirable moisture in your pastries, cakes and breads in spite of the drier heat of home ovens.

Kitchen Craft is dependably uniform: Absorbs the same amount of water each time—so you can follow your recipes to the letter, without change.

Your home-size recipes aren't the same as big-batch bakers use. Your ingredients are different, too. You use home-type shortening and baking powder.

For perfect results, now try a home-type flour—Kitchen Craft! Made especially for home baking, this top quality flour gives you cakes, pies and breads of mouth-melting delicacy and goodness. Adds important health values to your baked foods too because Kitchen Craft is enriched with B vitamins and iron.

Get a sack of home-type Kitchen Craft Flour and try it in your favorite recipes. If it fails to please you in any way, return the unused portion to your grocer and get all your money back!



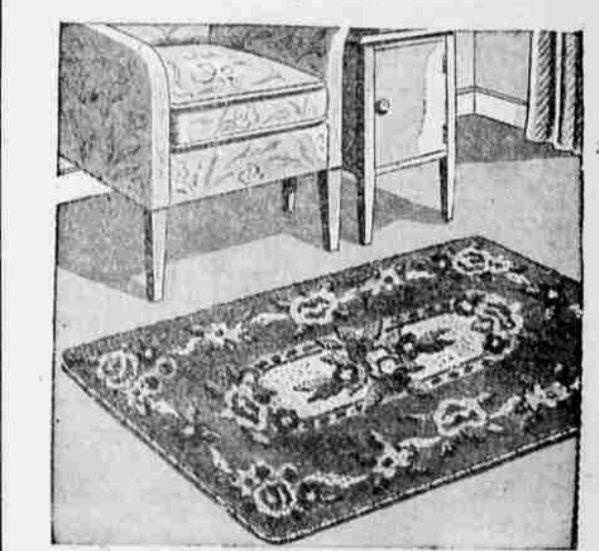
at **SAFEWAY**
LAY AWAY A BOND TODAY

BUILT BOMBERS
San Diego, Cal.—(U.P.)—The Fort Worth and San Diego plants of Consolidated Vultee Aircraft Corp. produced 29.5 per cent of all heavy bombers completed during the first six months of 1944.

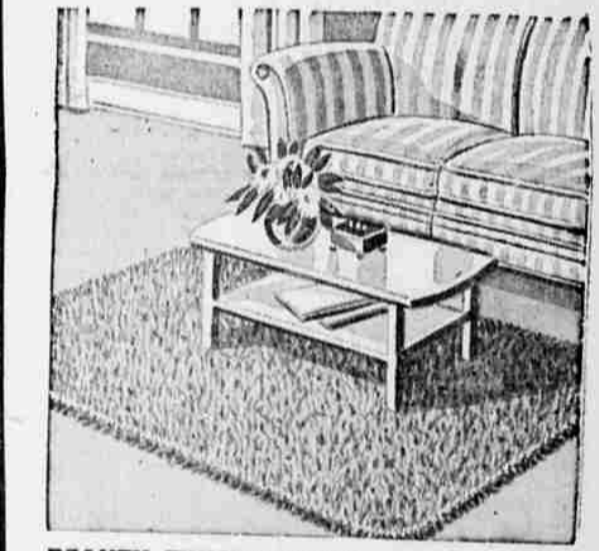
ASKS FIRM HAND
Boston—(U.P.)—Alexander M. Sullivan, business manager of Boston public schools, thinks the use of returning servicemen as teachers in grade schools would curb reported lax discipline and delinquency.

MONTGOMERY WARD

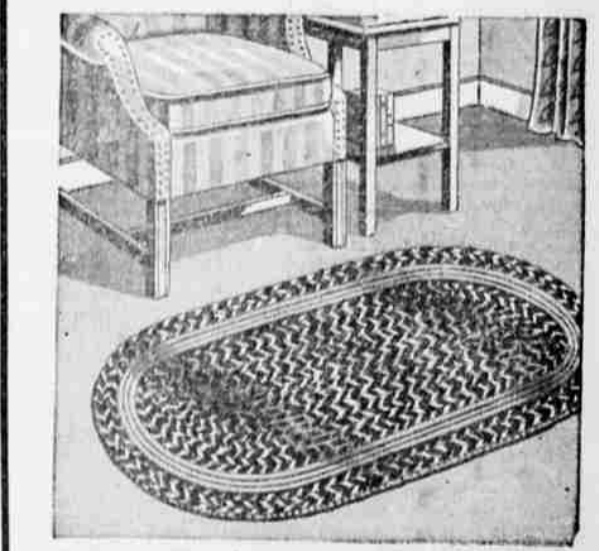
COME TO **Wards** FOR IMPRESSIVE **Home Values!**



COLORFUL WOOL HOOKED SCATTER RUGS 10.25
Here is the rug that will add smartness and distinction to your home. Delightful shades in a wide range of colors and floral patterns for your living room or bedroom. Sturdy rugs with deep, close pile hooked through heavy cotton backing. They will wear and wear. Do see these attractive rugs at Wards. Size 2x4 feet. Buy on Time Payment. Also see wide choice of other scatter rugs.



BEAUTY TWIST LOOPED PILE SCATTER RUGS 3.79
This scatter rug is outstanding in beauty and attractiveness. High, looped shaggy pile heavily stitched in cotton backing. A sturdy, practical rug as well as good looking. It is pre-shrunk and the colors are fast so occasional washing will keep it bright. Beauty Twist can be used in every room in the house. Do see these at Wards. Size 24x42 inches.



SEE THESE BRAIDED OVAL RUGS AT WARDS 4.59
You are sure to like these attractive oval braided rugs. They are especially nice... cotton yarns braided over a special filler (not regular cotton braided rug). They come in rose, blue, brown and green combined with white. Use them for the dining room, living room or bedroom. Very well made to give you long wear. Size 24x42 inches.

Montgomery Ward
117 So. Central—Phone 3930