

● THE HOME OF GROCETERIA GOODNESS ● ONE SHOPPING STOP FOR EVERYTHING ●



Tomorrow!
LAST CHANCE TO ORDER
HOME PURITY DeLUXE
FRUITCAKE in Overseas
Shipping Cans

You have but one week in which to mail the Christmas parcel to the boy in over sea service. To be able to fill all orders in time for mailing we must have all orders by tomorrow. No charge for the can. You get full weight of fruit cake.

\$1.49

Home Purity LAYER CAKES

DIVINITY WHITE LAYER CAKE	ALABAMA SPICE LAYER CAKE	ORANGE BUTTER LAYER CAKE
RED DEVILS FOOD CHOCOLATE LAYER CAKE	PETUNIA PINK LAYER CAKE	ANGEL CAKES IN VARIETY



Doughnuts

Delicious flaky doughnuts topped with Chocolate or Orange Icing.

Whole Cake 59c
1/2 Cake 30c

- Danish Butterhornseach 5c
- Danish Pecan Krispies.....3 for 25c
- Danish Bear Claws.....5c
- Fruit Nougats5 for 15c
- Cinnamon Rolls6 for 15c
- French Hand Rolls.....6 for 10c

FOR BETTER TOAST

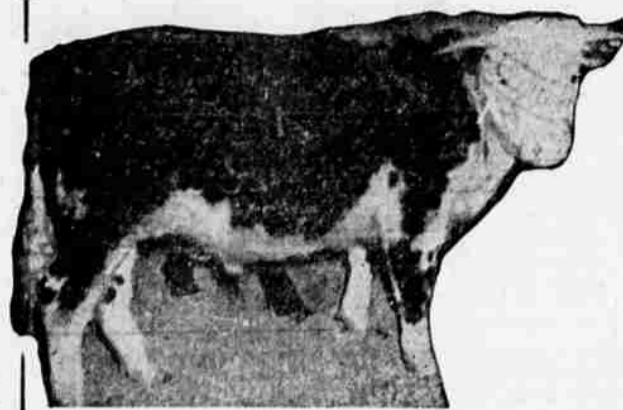
Home Purity Vitamin Enriched
Bread With Dextrose Sugar

Try it for Sunday breakfast and let your taste decide.

1 lb. loaf 9c - 1 1/2 lb. loaf 2 for 25c

Unrationed, Jellies, Jams and Preserves

Apricot	Loganberry	Youngberry
Apricot Pineapple	Red Raspberry	Guava Jelly
Concord Grape	Red Currant	Gooseberry
Peach	Bing Cherry	Crabapple Jelly
Plum	Apple Jelly	Apple Butter
Boysenberry	Mint Jelly	Apple and Quince
Blackberry	Strawberry	Marmalades



Now! You May Have the Finest Beef
in World at OPA Low Ceiling Prices
4-H CLUB STEERS Including
The CHAMPION ANGUS

14 4H Steers were bid in at the auction from the following 4H Club Members:

- Jan Freeman—Antelope Club
- Bernice Biglow—Antelope Club
- Allen Owens—Valley View Club
- Phyllis Cahail—Antelope Club
- Richard Ryan—West Side Club
- Tommy Carlton—Upper Rogue Club
- Charles Ashpole—Roxy Ann Club
- Della Walsh—Antelope Club
- Merton Bradshaw—Lake Creek Club
- Lula Mae Cahail—Antelope Club

All Steers Grade AA the Finest

So -- for the Finest Eating
STEAKS ROASTS

Porterhouse . . . 53c lb.	Standing Rib . . . 33c lb.
T-Bone Steaks . 53c lb.	Rump Roast . . . 28c lb.
Sirloin, boneless 55c lb.	Chuck Roast . . . 30c lb.
Round Steak . . . 43c lb.	English Cut . . . 30c lb.

Pure Pork Sausage 39c **Ground Steer Beef 29c**
Grade AA Lb. **Point Free Lb.**

Point Free BEEF

- Extra Lean
- Short Ribs 19c lb.
- Beef Pot Roast 23c lb.
- Round Steak 30c lb.
- T-Bone Steaks 36c lb.

CHIPPED BEEF 22c
 1/4 lb.
Will Serve Six People

Point Free VEAL Cuts

- Breast of Veal . . . 20c lb.
- Cut with pocket for stuffing
- Veal Pot Roast . . . 26c lb.
- Veal Chops 37c lb.
- Veal Round Steaks 41c lb.
- Veal Loin Chops 39c lb.
- Boneless Veal cubes 32c lb.

AMERICAN CHEESE 2-lb. box 84c

VARIETY MEATS

- Beef Hearts 22c lb.
- Beef Tongues 36c lb.
- Beef Liver 38c lb.
- Ox Tails 16c lb.

VEAL LOAF
 for meat loaf
 or patties **lb. 32c**

Fruits & Vegetables

- Extra Fancy Utah Celery, large bunches . . . lb. 5c
- Sweet Potatoes, 3 lbs. 17c
- Banana Squash, cut or whole lb. 3c
- Green Beans . . . 2 lbs. 25c
- Carrots 2 bunches 15c

Nowhere but here could you buy such a meal for 40c.

RESERVE 4H CHAMPION STEER SHORT RIBS—Braised
 Mashed Potatoes
 Vegetable
 Bread and Butter — Coffee
40c

Served at both Groceterias 11 A.M. to 8 P.M.

Enough to insure everyone his favorite cut—either steak or roast. Due to manpower shortage place orders for special cuts in advance.

Groceteria SAVINGS

- Sunshine New Crop White Fig Bars, 12 oz. 25c
- Marshmallows, fresh from the factory this week 12-oz. pkg. 19c
- Locker Paper, large roll 49c
Vegetable Parchment Prevents Freezer Burn and Dehydration.
- Freezer Food Cartons—
Pints 29c doz.; qts., 39c; 1/2 gal. 59c
- Morton's Sausage Seasoning, enuf for 40 lbs. 25c
- Red Devil Soot and Carbon Remover, pkg. 33c
Time to Clean it Out
- Pure Sage Honey (refined)—two sizes 29c - 56c
- Best Ever Macaroni 14-oz. pkg. 14c
Sea Shells, Alphabets, Jumbo Vernicilli, Elbow, Curve Cut, Mustacioli, Saladettes
- Best Ever Egg Noodles 16-oz. pkg. 24c
Cook 'Em With 4H Club Beef
- Fresh Roasted Peanuts 12-oz. bag 29c
- Salted Peanuts 8-oz. bag 19c
- Fancy Oregon Blue Lake Green Beans,
No. 2 can 17c
- Green Spot Green Beans No. 303 can 12c
- Oregon Blue Lake Cut Green Beans,
No. 2 can 2 for 25c
- Creswell Cut Beans, No. 2 can 2 for 25c
- Sacramento Spinach No. 2 can 14c
- Hartex Spinach No. 2 can 13c
- Hunt's Supreme Spinach No. 2 1/2 can 19c
- Walla Walla Spinach No. 2 1/2 can 19c
- Diamond A Sliced Beets No. 2 can 15c
- Diamond A Diced Beets No. 2 can 12c
- Summer Time Sliced Beets No. 2 can 12c
- Gold Bar Diced Carrots No. 303 can 12c
- Diamond A Whole Kernel Corn No. 2 can 15c
- Gold Bar Creamed Golden Corn No. 2 can 15c
- Three Sisters Whole Kernel Corn, No. 2 can 14c
- Tender Sweet Cr. White Corn No. 2 can 13c
- Rose Brand Peas, No. 2 can 2 for 25c
- Garden Peas, No. 303 can 2 for 25c
- Silver Bar Sugar Peas No. 2 can 13c
- Walla Walla Small Green Lima Beans,
Picnic can 15c
- Gold Bar Green Lima Beans No. 2 can 21c

GATES & LYDIARD
 SAVINGS WITHOUT SELF-DENIAL 6TH AT CENTRAL—6TH AT GRAPE