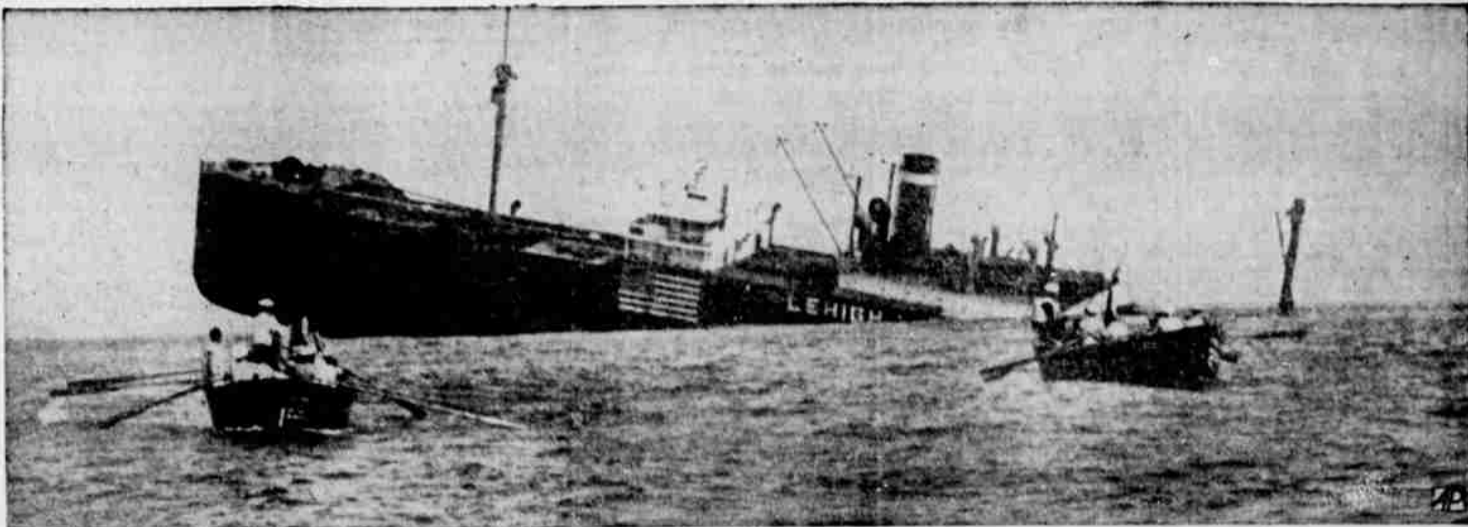


WAR TOPS 1941 NEWS

Associated Press Telemats Summarize Historic Events



SEA RENDEZVOUS Calm was the Atlantic in August when Roosevelt, the nation's first third-term president, and Churchill met aboard the battleship Prince of Wales, later sunk, to formulate eight war aims, chief of which is "destruction of Nazi tyranny." In December, the two nations thus represented were full-fledged allies in World War II, and on Dec. 22 Churchill, accompanied by Lord Beaverbrook and a technical staff, arrived at the White House to "discuss with the President all questions relevant to the concerted war effort."



OLD GLORY INTO THE SEA Her identity as a U.S. ship unmistakable, the empty freighter Lehig sank after a sub attack Oct. 19 off Africa, joining in a watery grave other attacked American-owned vessels, as the Robin Moor, Steel Seafarer, Bold Venture, and the U. S. destroyer Reuben James. The latter sank with loss of about 100 lives Oct. 31 while on North Atlantic convoy duty. These repeated raids on U. S. shipping brought the September "shoot first" order for navy and air units on watch for Axis craft, led to neutrality act revision to permit the arming of ships.



NAZI UPSET A powerful Russian offensive, plus sub-zero cold that the Reds blithely called a frost, in December reversed the German drive on Moscow, left Nazi booty or Russians (above). Hitler, who'd disposed of Yugoslavia and Greece in a month, April, invaded Russia June 22. His supply-hungry troops found factories razed, fields laid waste. So complete was the rout of Nazis that Hitler, answering what he said was an "inward call," assumed command of German armies Dec. 19, ousting von Brauchitsch. For her part in war, Finland lost U. S. friendship.



WAR Discord in U.S. on which the Axis may have been counting melted swiftly after war declarations—against Japan Dec. 8, against Germany and Italy Dec. 11 (above). "America First" dissolved; Lindbergh called for "united Americans"; Isolationist Sen. Wheeler said of Japanese: "We must lick hell out of them." Latin American nations meet in January.



RANK In shakeup after attack on Hawaii, Admiral Ernest J. King (top), 62, of Ohio, became commander of entire U. S. fleet in charge of all operations; Rear Admiral Chester W. Nimitz (lower), 56, got command of Pacific Fleet.



UP NORTH Far from home are two southerners, J. C. Waters (left) and G. C. Morgan, on patrol in Iceland which U.S. forces occupied in July to forestall Axis threats. During 1941 Uncle Sam built up Atlantic bases leased from Britain, and on Nov. 23 U.S. troops landed in Dutch Guiana to protect the bauxite—ore needed for aluminum—mines there.



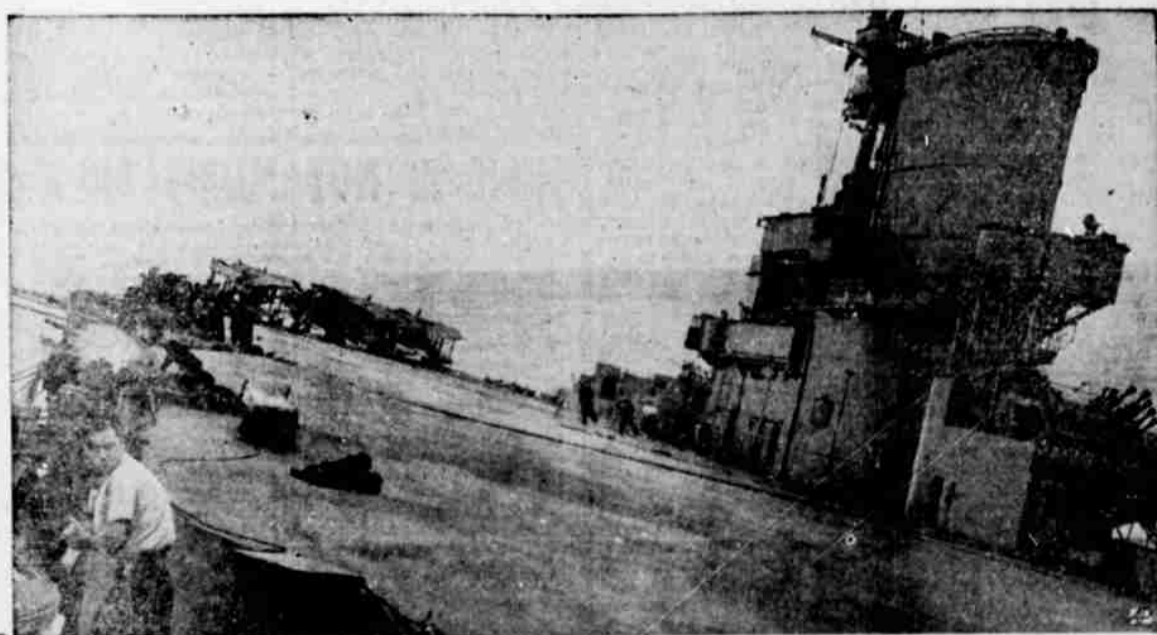
FLIGHT Still England's war prisoner, Rudolf Hess (above), No. 3 Nazi, flew some 800 miles from Germany to Scotland where he surrendered to a farmer May 10. Stalin claims Hess sought to line up British and U. S. against Reds. Some think he brought peace bid.



DESERT DASH Britons engaged in driving Axis out of Libya, possibly before Nazis could bolster flagging efforts and create new threats to Suez and the Mediterranean, hurry into action. In this drive the British garrison at Tobruk, under Axis siege since April 12, was relieved. Nazi pressure on France which has a fleet as well as strategic bases on the African coast—Dakar is 1,620 miles from Natal, Brazil—may have helped speed up the British clean-up campaign. In April, Haile Selassie regained Addis Ababa and the kingdom Italians took in May, 1936.



LOVE King Leopold (above) of Belgium, whose first wife, Queen Astrid, died in an auto accident in 1935, on Sept. 11 wed a commoner, Mary Baels. Since May, 1940, Leopold has been a war prisoner in own land, living near Brussels.



'LIKE A TIRED CHILD' Repeatedly "sunk" by Axis claims, Britain's 22,000-ton aircraft carrier, the Ark Royal (above), finally did sink Nov. 14, "toppling over like a tired child" while being towed after a submarine attack east of Gibraltar. Thus did the Axis settle a score against the Ark Royal, for it was torpedo-carrier planes from this carrier that sank Germany's new battleship, the 35,000-ton Bismarck, May 27 in swift revenge for Bismarck's sinking of another British ship, the 42,100-ton cruiser Hood. Japan on Dec. 19 sank Britain's new 35,000-ton battleship Prince of Wales and 32,000-ton cruiser Repulse, off Malaya.



CHIEF On canny, blunt Gen. Douglas MacArthur, who on Dec. 18 inducted entire Filipino army into the U. S. army, rests burden of directing defense of Philippines against Japanese bombings and invasion attempts aimed chiefly at Manila and Luzon Island.



BOMBERS ABLAZE Smoke from blazing B-17 bombers, caught aground by Japan's surprise assault Dec. 7 on Pearl Harbor, Hawaii, curls up past one bomber that escaped damage. In this attack, staged even as Japan's "peace" envoy Kurosu was seeing Hull, some 2,897 soldiers and sailors were killed, and the battleship Arizona, three destroyers, a target ship, a mine layer and "other vessels" were sunk. A 5-man board headed by Supreme Court Justice Roberts will study Hawaii's lack of alertness, as discovered by Navy Secretary Knox on his inspection tour. Knox also reported finding evidence of "most effective fifth column work of war."