

THE SACRED DAGGER

YESTERDAY: Anne Willard, and the two men who are trying to get through the Emir's country with her, have apparently escaped that rapacious ruler—by the stratagem of marriage. But double-crossed his American prisoners after all, for Anne, Blaze Sherwood and Pete Mackey now are being driven rapidly into desolate country.

Chapter 13 Castle In The Desert

BLAZE walked behind for perhaps half a mile, then reentered the carriage. "The camel's real enough," said Sherwood. "I see his tracks mingled with our own animals' as well as older tracks as if camels heavy with young or loaded down with packs had passed here yesterday going the same direction. But we meet no one and there are no returning tracks. It is possible that there are wild camels about, which would explain the sign."

"What's that about the old Thieves' Road around the end of the river?" Anne asked. "Our captain mentioned it but there's no indication this stretch we're on has ever been a highway. We seem to be headed for the center of the Depression."

"So what?" "I don't know," he admitted. "Mackey's and my revolvers were taken away from us and they haven't been returned, although the balance of our luggage is strapped to the back of the carriage."

"Do you suspect treachery?" Anne asked. "If the lama could predict that you would find me why couldn't he predict the end of this journey?"

Sherwood took her hand in both of his and held it on his knee. "Doddap," he reminded her, "is not a thinker, and he likes to be mysterious at times."

"She nodded. 'Tears and talk of paradise.' He removed a scarab ring from his finger and tried fitting it on her hand."

"She became conscious of how black and thick were the lashes that shaded his gray eyes. The blaze in his hair stood out like the banner of a special individuality. An unbidden thought entered her mind that here was a man who should father extremely handsome daughters. She felt a bit abashed."

"They passed out of the dunes and entered a region of low brown clay ridges. He smiled and patted her hand and returned it to her, having discovered the ring was much too large. His indirect love-making had a way of creeping up on her in surprise attack. She caught herself looking back to Mackey for moral support. He waved and she responded."

Sherwood smiled again as if aware of her reaction and began telling her some of his experience in far corners of the world. The sun sank towards the Bekkan Bula mountains that had begun to loom on the far horizon as they rode from the spell of his words. It had been like a journey back into childhood, to the dear, familiar times when her parents came home from some extended expedition and related their experiences. They always promised, "When you grow up and finish college you may come with us." She told Sherwood about it.

"I can see that child," he said, gently scrutinizing her face, "big eyes—wistful, luminous with longing, little chin aquiver because she was going to be left alone again."

"Silly of me," she admitted, "I lived only for the time when I should grow up."

"That explains Dr. O." he stopped, suddenly as if realizing he was about to speak private thoughts aloud. "Where are they taking us?"

"That's what I'd like to know. When do we reach Chuka?" she demanded and poked the footman impatiently.

The man whirled, eyes glowing, teeth bared, fists clenched in self-defense. Then he grinned apologetically when he saw that it was Anne who had attacked him. "Chuka," she repeated. "Chuka, Chuka."

He offered her the water skin. "He thinks you're choking," teased Sherwood, and they went back on the old familiar footing again.

WIFE CAN'T TELL TIME SAYS MATE

Anniston, Ala., June 2—(AP)—An Atlanta man wrote Circuit Judge Lamar Field, asking the court to prevent his wife from

On the Radio Chains

STATIONS: Where to find them on the dial. KEX, 1190, Portland; KFI, 640, Los Angeles; KGA, 1510, Spokane; KGO, 810, San Francisco; KGW, 420, Portland; KJR, 1000, Seattle; KNX, 1070, Los Angeles; KOA, 850, Denver; KOIN, 970, Portland; KOMO, 950, Seattle; KPO, 430, San Francisco; KSL, 1160, Salt Lake.

Monday 8:00 p. m.—Radio Theater, KNX, KOIN, KSL, Dr. I. Q. McClain, KPO, KGW, KOMO; String Ensemble, KGO, KEX, KJR, Floyd Wright, KPO, Stars of Today, KGW. 8:30 p. m.—Guy Lombardo's Orch., KNX, KOIN, KSL; Gordon Jenkins' Orch., KGO, KEX; Contended Hour, KPO, KGW, KOMO; Scandinavian News, KJR. 9:30 p. m.—Cavalade of America, KPO, KOIN, KGO; Blondie, KSL, KNX, KOIN; Nat'l Radio Forum, KJR; Mimos Bonaldi, KGO; Shall We Wait, KEX. 7:00 p. m.—Amos 'n' Andy, KNX, KOIN, KSL; Fred Waring, KPO, KOMO, KGW; Voice of Hawaii, KGO, KEX; Greater Washington Hour, KJR. 7:30 p. m.—I Love a Mystery, KGO, KEX, KJR; Gay Nineties Revue.

KNX, KSL, KOIN; Harry James' Orch., KOMO; American Challenge, KPO; Richard Himber's Orch., KGW. 8:00 p. m.—Neil Bondahu's Orch., KPO, KGW, KOMO; Those We Love, KNX, KOIN, KSL; Amateur Hour, KGO; Sports, KEX; Buy Washington, KJR. 8:30 p. m.—Point Sublime, KPO, KOMO, KGW; What's On, Your Mind, KSL, KNX, KOIN; American Challenge, KEX; Concert Hall, KJR. 9:00 p. m.—Paul Sullivan, KNX, KOIN; Fantasy in Melody, KEX; Hawthorne House, KPO, KGW, KOMO, Memory Book, KGO; Hot Stove League, KJR. 9:30 p. m.—Pick a Tune, KPO, KGW, KOMO; Beautiful Music, KGO, KEX, News, KJR, KSL. 10:00 p. m.—Ray Noble's Orch., KNX; Reporter News, KPO, KOMO, KGW; Basin Street Chamber Music, KGO, KEX, KJR; News, KOIN; Masterworks of Music, KSL. 10:30 p. m.—Ed Stocker, KGW, KOMO; Jerry Jones, KSL; National Radio Forum, KGO; Masterworks of Music, KNX; Eyes of the World, KSL. 11:00 p. m.—Chuck Foster's Orch., KGW; Music You Want, KGO, Organ, F.T.R. KEX; Billy Marshall, KNX, KSL. Tuesday 8:00 p. m.—Speaking of Glamour, KGW; Streamline Journal, KGO, KJR; Waltz With Us, KPO; Second Husband, KNX, KOIN; Alvin Roth's

Orch., KEX; Arboretum Talk, KOMO; Bible Quiz, KSL. 8:30 p. m.—Drama Behind the News, KGO, KEX, KJR; Fibber McGee, KPO, KOMO, KGW; Invitation to Learning, KSL, KNX, KOIN. 8:00 p. m.—Bob Hope, KPO, KOMO, KGW; New American Music, KGO, KEX; Glenn Miller's Orch., KOIN, KNX, KSL. 8:30 p. m.—College Humor, KPO, KGW, KOMO; Uncle Jim's Question Bee, KGO, KJR, KEX; Nat'l Conference of Social Work Prgm., KOIN, KNX, KSL. 7:00 p. m.—Amos 'n' Andy, KNX, KOIN, KSL; Fred Waring, KPO, KGW, KOMO; Grand Central Station, KGO, KEX, KJR. 8:30 p. m.—Information Please, KGO, KEX, KJR; Johnny Presents, KPO, KOMO, KGW; Court of Missing Heirs, KNX, KOIN, KSL. 8:00 p. m.—We, the People, KNX, KOIN, KSL; Easy Aces, KGO, KJR, KEX; Sammy Kaye's Orch., KPO, KOMO; Richard Himber's Orch., KGW, KOIN; Musical History Book, KGO, KJR; Battle of the Sexes, KPO, KOMO, KGW; Hollywood Showcase, KX, KOIN; Baseball Game, KEX; Richard Himber's Orch., KSL. 9:00 p. m.—Paul Sullivan, KNX, KOIN; Enric Madriquera's Orch., KGO, KJR; Al Donahue's Orch., KOMO; Barre of Fun, KPO; Pathful Stradivari, KGW; Symphonic Bernade, KSL. 9:30 p. m.—Bill Henry, KNX, KOIN;

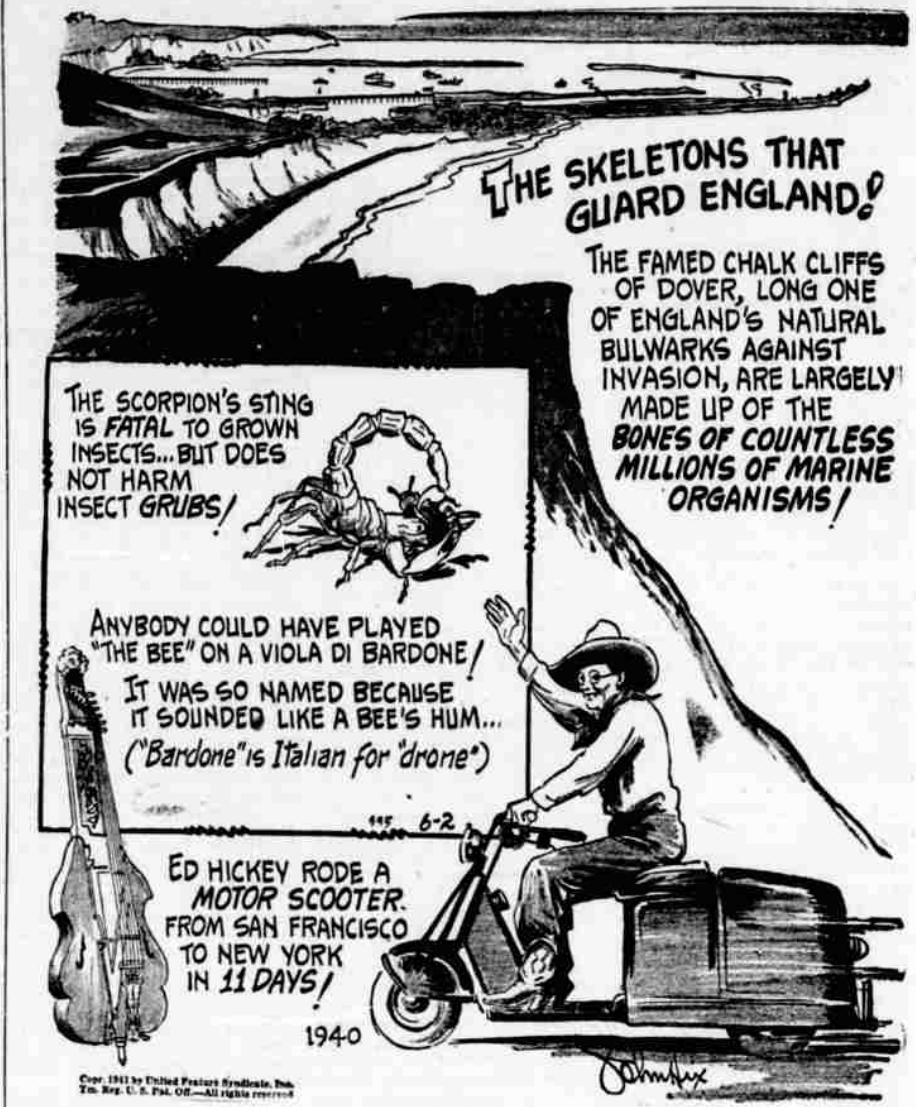
Don Pedro's Orch., KGO, KGW; Musical Potpourri, KPO; News, KJR, KSL; On With the Dance, KOMO. 10:00 p. m.—Reporter News, KPO, KOMO; Neil Bondahu's Orch., KGO, KJR; Ray Noble's Orch., KNX; News, KGW, KOIN. 10:30 p. m.—Skinny Ennis' Orch., KGW, KOMO; Behind the Headlines, KEX; Masterworks of Music, KNX; Soldiers of the Air, KOIN; Masterworks of Music, KNX; Soldiers of the Air, KOIN. 11:00 p. m.—News, KGO, KGW;

the home of Irene Johnson. Several aprons have been turned in to the fancy work committee and plans made to make more fancy work. Several cakes are to be baked for next Grange meeting and be sold with ice cream to be served by the committee, Ethel Martin and Pauline Tygart. Next H.E.C. meeting, June 10, probably will be held at the hall.

THE GRANGE

Gold Hill Grange Gold Hill H.E.C. held a pot luck picnic dinner May 27 at

STRANGE AS IT SEEMS by JOHN HIX



ANYBODY COULD HAVE PLAYED 'THE BEE' ON A VIOLA DI BARDONE! IT WAS SO NAMED BECAUSE IT SOUNDED LIKE A BEE'S HUM... ('Bardone' is Italian for 'drone') ED HICKEY RODE A MOTOR SCOOTER FROM SAN FRANCISCO TO NEW YORK IN 11 DAYS! 1940

LONG REACH By GLUYAS WILLIAMS



IN MIDST OF VERY EXCITING CHAPTER, FATHER ASKS HIM TO PASS HIM THE ASH TRAY. REACHES FOR IT

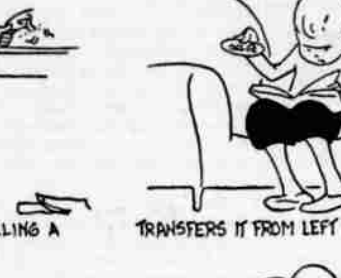
By GLUYAS WILLIAMS



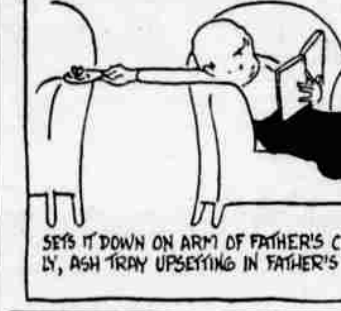
FEELS AROUND FOR IT, UPSETTING BRASS ELEPHANT AND KNOCKING BOOK AND MAGAZINE OFF TABLE



GETS HOLD OF ASH TRAY AT LAST, SPILLING A FEW STUBS OUT OF IT



TRANSFERS IT FROM LEFT HAND TO RIGHT



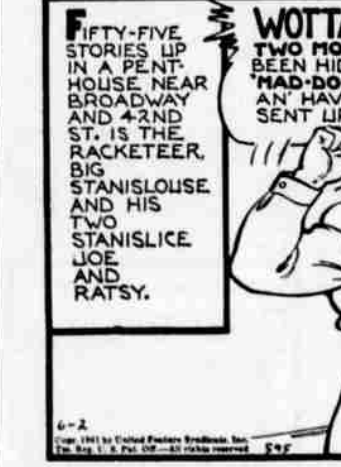
SETS IT DOWN ON ARM OF FATHER'S CHAIR, INSECURELY, ASH TRAY UPSETTING IN FATHER'S LAP



SIGNS AND LISTENS TO FATHER'S REMARKS, READING JUST A LITTLE OUT OF CORNER OF HIS EYE

(Released by The Bell Syndicate, Inc.)

L'I' ABNER When Strong Men Quake!



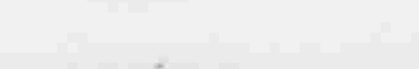
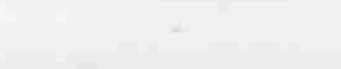
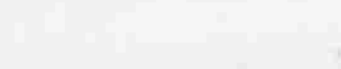
TAILSPIN TOMMY Crippled Wings



THE NEBBS A Letter



FANNY!



Weather Northern California: Fair but with considerable cloudiness north portions and near coast tonight and Tuesday; moderate temperature, moderate north-west wind off coast.