

Want to Buy, Sell or Exchange? Read the Ads on This Page! It's Filled With Opportunities!

SAVE TIME CLASSIFIED

Send 5¢ to us this page. You will probably find exactly the things you have been looking for or a sale or trade for unused articles you may have.

RATES

Per word first insertion—3c (Minimum 25c) Each additional insertion, 1c per word (Minimum 10c) Per line per month without copy change—\$1.25

CASH

or money order must be company all mail order classified ads.

LOST AND FOUND

LOST—Red Cocker puppy, name "Jerry," on Butte Falls road vicinity of Rocky Hill, reward, Richard von der Holten, Prospect.

WANTED—MALE HELP

WANTED—Apple thinners. See Harold Johnson, Log Cabin, Ashland.

WANTED—FEMALE HELP

WANTED—Middle-aged housekeeper. Call after 7 p. m. 215 Vancouver, Phone 2961.

WANTED—SITUATIONS

CAPABLE WOMAN wants office or house cleaning, ironing or other housework. Phone 3160.

WANTED—MISCELLANEOUS

WANTED—1000-lb. of 12-inch and 16-inch body fir. P. E. Samson Co. Phone 3756.

WILL PAY MUST CASH

For Good Quality, Solid Furniture. HOLBROOK FURNITURE, 18 North Front. Phone 4023.

FOR RENT—HOUSES

CLEAN 4-ROOM HOUSE near Big W. \$10 month. Inquire 505 Edwards.

FOR RENT—HOUSES

FOR RENT—3 and 5-room houses. McCay, Howard Ave.

FOR RENT—APARTMENTS

ATTRACTIVE modern apartment. 516 South Oakdale.

FOR RENT—MISCELLANEOUS

BEAUTIFUL furnished apartment. 312 South Oakdale.

FOR RENT—MISCELLANEOUS

BEAUTIFUL furnished apartment. 312 South Oakdale.

FOR RENT—MISCELLANEOUS

BEAUTIFUL furnished apartment. 312 South Oakdale.

FOR RENT—MISCELLANEOUS

BEAUTIFUL furnished apartment. 312 South Oakdale.

FOR RENT—MISCELLANEOUS

BEAUTIFUL furnished apartment. 312 South Oakdale.

FOR RENT—MISCELLANEOUS

BEAUTIFUL furnished apartment. 312 South Oakdale.

FOR RENT—MISCELLANEOUS

BEAUTIFUL furnished apartment. 312 South Oakdale.

FOR RENT—MISCELLANEOUS

BEAUTIFUL furnished apartment. 312 South Oakdale.

FOR RENT—MISCELLANEOUS

BEAUTIFUL furnished apartment. 312 South Oakdale.

FOR RENT—MISCELLANEOUS

BEAUTIFUL furnished apartment. 312 South Oakdale.

FOR RENT—MISCELLANEOUS

BEAUTIFUL furnished apartment. 312 South Oakdale.

FOR RENT—MISCELLANEOUS

BEAUTIFUL furnished apartment. 312 South Oakdale.

FOR SALE REAL ESTATE

FOR SALE—2 1/2 acres. Make your own terms. City limits. Owner 208 West Grand.

BUSINESS PROPERTIES

I will have a few at very low prices. Information by appointment only. Dial 2570. Walter H. Jones, Realtor.

CHOICE BUILDING SITE

320 ACRES fenced, free irrigated. House, barn, hay, stock. Wilshire Ranch, Lake Creek, Oregon.

BUILDING A HOME?

Let us handle all details on 25-year FHA loans—quickly efficiently. Golden Agency.

CITY and country properties

Loans Insurance. C. S. Butterfield 409 Medford Building.

SEE H. L. COOK for anything in Real Estate.

416 South Oakdale. 1104 West Main. Dial 3579.

WHEN YOU think of real estate

think of the Clinton Spencer Agency.

FOR SALE—MISCELLANEOUS

FOR SALE—Ideal Diamond Lake fishing boat. 524 Beekman.

FOR SALE—MISCELLANEOUS

FOR SALE—Sudan grass seed, 30 lb. Morris Frink, Sams Valley.

FOR SALE—MISCELLANEOUS

FOR SALE—2 1/2 acres. Make your own terms. City limits. Owner 208 West Grand.

BUSINESS PROPERTIES

I will have a few at very low prices. Information by appointment only. Dial 2570. Walter H. Jones, Realtor.

CHOICE BUILDING SITE

320 ACRES fenced, free irrigated. House, barn, hay, stock. Wilshire Ranch, Lake Creek, Oregon.

BUILDING A HOME?

Let us handle all details on 25-year FHA loans—quickly efficiently. Golden Agency.

CITY and country properties

Loans Insurance. C. S. Butterfield 409 Medford Building.

BUSINESS DIRECTORY

Painting and Paperhanging. SULLIVAN BROS. & JOHNSON are no longer connected with Ekerson Paint and Roof Store.

PERSONAL—AUTO LOANS

Would You Like To REDUCE AUTO OR FURNITURE PAYMENTS ONE HALF OR MORE

And Select Your Own REPAIRMENT PLAN?

Consult the OREGON FINANCE CO. W. E. Thomas Mgr. 415 So. Centre. Dial 4433

Roofing.

WE REPAIR or apply any type of roof. Pabco Roofing & Siding Co. Coatings and Paints. New stock. Wall Paper. Ekerson Paint and Roof Co. 38 So. Bartlett. Tel. 3845

Transfer.

CITY TRANSFER & STORAGE CO.—Household moving and general hauling. 29 S. Grape. Phone 4664 day or night.

REDS TRANSFER & STORAGE CO.

Office 16 South Fir. Phone 2828. Prices right. Service guaranteed.

DAVIS TRANSFER AND STORAGE

40 S. Fir Street. Insured Carriers. Local and Long Distance Hauling. Phone 2888.

FURNITURE MOVING AND STORAGE

WE have van moving equipment for local and long distance hauling. Dry clean storage (concrete buildings) with special locker rooms at low rates.

SAMSON STORAGE WAREHOUSE

Phone 3756.

Venetian Blinds.

VENETIAN BLINDS Guaranteed steel or wood Venetian Blinds, 200 sq. ft. installed. Phone Burks Medford. Tent & Awn. 4472. Free estimate.

LEGAL NOTICES

In the County Court of the State of Oregon for Jackson County. In the matter of the estate of Kate Grimley deceased.

ELIZABETH SKYRMAN, Administratrix.

Prospect

Prospect, May 28—(Sp.)—Dewey Hill suffered loss of the tip of the index finger on his left hand while operating a meat slicing machine in Grine's store Friday.

Highway Oiled.

Vale, Ore., May 28—(P)—Oil on the McDermitt section of the Idaho-Oregon-Nevada highway began this week.

Crossword Puzzle

ACROSS 1. Crafty 21. Beards of grain 2. Oriental nurse 31. Have obligations 3. Serpents 49. Symbol for iron 14. Knot 41. Binder 15. Rosette of ribbon 42. Martyr 16. Entire 43. Kind of dog 17. Large plant 44. Grayish tawny 18. Myself 45. Short 19. Fastening device 50. Game 20. Pronoun 51. Kinet 21. Sharp 52. Instrument 22. Profound 53. Instrument 23. True 54. Come into view 24. Grayish white 55. Grayish white 25. Agility 56. Tropical bird 26. Division of that girl 57. Division of road car 27. Kind of railroad car 58. Olfactory organ 28. Football position: abbr. 59. Beverage

Radio Highlights

By Associated Press. Time is Pacific Standard. Tonight: 4:30, three former Democratic presidential candidates discuss aid to Britain.

PERSONAL—AUTO LOANS

Would You Like To REDUCE AUTO OR FURNITURE PAYMENTS ONE HALF OR MORE

And Select Your Own REPAIRMENT PLAN?

Consult the OREGON FINANCE CO. W. E. Thomas Mgr. 415 So. Centre. Dial 4433

Roofing.

WE REPAIR or apply any type of roof. Pabco Roofing & Siding Co. Coatings and Paints. New stock. Wall Paper. Ekerson Paint and Roof Co. 38 So. Bartlett. Tel. 3845

Transfer.

CITY TRANSFER & STORAGE CO.—Household moving and general hauling. 29 S. Grape. Phone 4664 day or night.

REDS TRANSFER & STORAGE CO.

Office 16 South Fir. Phone 2828. Prices right. Service guaranteed.

DAVIS TRANSFER AND STORAGE

40 S. Fir Street. Insured Carriers. Local and Long Distance Hauling. Phone 2888.

FURNITURE MOVING AND STORAGE

WE have van moving equipment for local and long distance hauling. Dry clean storage (concrete buildings) with special locker rooms at low rates.

SAMSON STORAGE WAREHOUSE

Phone 3756.

Venetian Blinds.

VENETIAN BLINDS Guaranteed steel or wood Venetian Blinds, 200 sq. ft. installed. Phone Burks Medford. Tent & Awn. 4472. Free estimate.

LEGAL NOTICES

In the County Court of the State of Oregon for Jackson County. In the matter of the estate of Kate Grimley deceased.

ELIZABETH SKYRMAN, Administratrix.

Prospect

Prospect, May 28—(Sp.)—Dewey Hill suffered loss of the tip of the index finger on his left hand while operating a meat slicing machine in Grine's store Friday.

Highway Oiled.

Vale, Ore., May 28—(P)—Oil on the McDermitt section of the Idaho-Oregon-Nevada highway began this week.

Hybrid Corn for Southern Oregon Under Development on Day Ranch

(Editor's note: The following article concerning experiments with hybrid corn on Earl B. Day's ranch near Gold Hill appeared in a recent issue of "The Oregon Farmer," and is reprinted through the courtesy of that publication.)

By James Brocken Staff Representative, The Oregon Farmer. Fifty-six dollars per bushel is a good stiff price to pay for corn. That is the price, however, that Ben Day, grower of Wisconsin 525 hybrid corn, paid for parent seed stock for the planting of his six-acre cornfield.

That cornfield is on the Valley's End ranch of Judge Earl B. Day in Sam's valley near Gold Hill, Jackson county. Ben is the son of Judge Day, and for several years has been operating the family ranch. That the ranch should ever develop into a birthplace for new kinds of corn probably would never have occurred to local residents back in 1914 when Judge Day moved on to that ranch.

At that time that particular part of southern Oregon was essentially a cattle country. For years range livestock and fruit held the center of the stage, but then, times change and later generations come along with different ideas. The Day ranch—and is—a cattle ranch. A good share of the sizable pear orchard which the ranch also had has recently been removed, however, and a new opportunity for utilization of the land was thereby opened. At least, it looked that way to Ben.

Corn wasn't a new idea in that valley. Neither was hybrid corn a new idea. Growers had read of the magic being performed in the middle west by new strains of corn bearing the label "hybrid." They imported seed of those hybrid varieties and planted it. To their disgust and disappointment, results were no better than with the less highly touted old-line kinds they had been planting with indifferent success. Southern Oregon still was not a corn country, so long as the stuff grew like a fool and never would mature and dry out. That was what they thought.

Ben Day figured it out a little differently. He had studied agriculture at the state college. After he had taken over the operation of the ranch he invested a matter of months one winter in just hanging around the experimental plots at Corvallis and talking to the agronomists and farm crops specialists who were working with experimental types there.

He discounted the magic of the word "hybrid." He knew that a hybrid was no better than any other variety unless it had been hybridized for a certain set of conditions. He spent 10 or 12 hours learning the characteristics of the various hybrids that were being experimentally grown at Corvallis. He kept coming back to one particular hybrid, which had been bred strongly to an early maturing characteristic. In addition it was a heavy yielder, had a loose husk which let the ear dry rapidly and made for easy harvesting and was adapted either to dry or irrigated land. That was Wisconsin 525, and he made arrangements with the college to grow certified seed of that variety. The college had to have confidence in his knowledge of the principles of agronomy and confidence in his ability to carry out the long painstaking hours of work required and the honesty of his effort to maintain a pure strain.

There is more to producing hybrid corn seed than just planting the seed and then harvesting the crop. Ben Day pointed out some of the steps of the process to me as we walked through the field. In the first place, there are four parents for a strain of hybrid corn. The parent seed doesn't look like much, because each parent has been selected for one particular characteristic to the exclusion of all else. One may have been selected for early maturity. It may be a wizened, scrubby-looking nubbin, but it will mature weeks or months before ordinary corn. Another parent may be bred for deep-rooting characteristics, so that the corn stalk can go deep for its moisture and survive where shallower rooted kinds would shrivel and perish. Another parent may be bred for yield, and another for uniformity of kernel rows, and so on.

These four parent varieties are planted and when they reach the tassal stage each pair of them is crossed on the other pair. This produces two strains of corn, each containing the inheritance of two parents. So far, that work is all done on the farm of the experiment station which originated the variety. The experiment station will then release the seed—at \$1 per pound—to qualified growers like Ben Day, who then proceed to plant the two parents and cross them again into a variety containing the desirable characters of all four original parents.

The two parent varieties are interplanted by rows. There are four rows of one parent and then one row of the other parent. Then the work begins. As soon as the field approaches the tassal stage the field must be converted into male and female varieties. The variety which is planted in single rows becomes the male and the one which makes up the four rows is the female. This is accomplished by removing the tassels from all female stalks, so that they become incapable of shedding pollen on the silk of their own ears. This job takes one man's full

time for three weeks, and during the days when tassels are developing most rapidly three or four men may be busy at the job, on a six-acre field.

Thus, only the single-row male-variety can shed pollen on the developing ears. After the field has matured, the first job is to harvest the ears which have grown on the male stalk. They are hauled out of the field and used for feeding purposes. The remaining four-fifths of the rows in the field are harvested for seed purposes, as they are the only ones which have been crossed in the right direction to give the desired results.

That is what is back of hybrid corn. Of course, there are a number of other qualifications to be filled. The field must be at least a quarter of a mile from any other corn; the seed must be graded many times for size; it must be treated; it must be inspected several times during the growing season; it must pass purity and germination tests, and it must be packaged in new sacks.

What about the results? They are good enough that Ben Day believes the answer to southern Oregon's corn problem has been found, although he is still experimenting with other varieties. "It is always dry enough in this locality that we can snell it out and keep it through the winter without showing more than 12 1/2 to 13 1/2 per cent moisture," he said. "The loose husk is so easy to shuck that we can more than save the extra cost of the seed in harvest labor. Our females alone have yielded about two tons of corn to the acre on dry land and they make up only four-fifths of the field. You can't take the yield of hybrid seed corn that is used for feed purposes." He amplified that by explaining that the full potential of all four parents is not realized until after the final cross has been made and that seed planted. He expected large yields from the crop to follow the seed crop that he did from the seed crop itself.

The field was very free of damage by corn ear worm. We asked him about that. "The worms seem to get their start in the tassal," he replied, "before they go down to the ear. Every time we pulled a tassal we stepped on it, and if there was a worm there he was destroyed."

Corn is but one of the new side lines which are developing on the Day place. In addition to the corn planting there are about 25 acres of alfalfa seed, 17 acres of vetch seed, and 15 acres of Rex wheat for seed. With it all the cattle business is being expanded both in size and quality. With more intensive cultivation of better kinds of feed, and the elimination of the male and the one which makes up the four rows is the female. This is accomplished by removing the tassels from all female stalks, so that they become incapable of shedding pollen on the silk of their own ears. This job takes one man's full



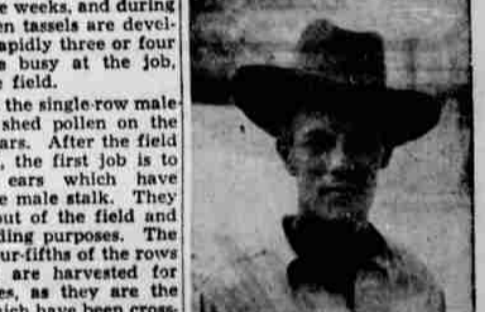
The result of the vetch-hay harvest.



The youngest Days did stand-in duty for their mother, who didn't want to be photographed.



Ben Day



lowing summer the oats and vetch will have attained a growth tall enough to swallow up from right an automobile driven into the field. Yields of hay are about six tons, dry basis, to the acre, from these unirrigated fields.

It's a flourishing place, this Valley's End Ranch, and its manning is the effectively co-operating team of Mr. and Mrs. Ben Day. Despite her refusal to share the limelight, Ben Day attributes to his wife a full share of the credit for the success of their ranch business.

To Can Tuna.

Astoria, May 28—(P)—The Pacific Marine Products company will establish a tuna cannery of 150,000-250,000 cases capacity here this summer. Tuna season opens around July 1.

Start Shearing.

Redmond, Ore., May 28—(P)—Shearing crews began work this week on the large range wool clips of central Oregon. Small farm clips have set the early market price at 34-37 cents.

See Mail Tribune want ads.

Pacific Coast Edition The Wall Street Journal BUSINESS & FINANCE Send for free sample copy 415 Bush St., San Francisco, Calif.