

DEAD INDIAN ROAD TO LAKE O' WOODS OPEN TO TRAFFIC

Last Stretch of New Route Completed Ahead of Time — Grades Are Easier

The new Dead Indian road connecting Ashland with Lake O' Woods was opened to traffic today, nine days ahead of schedule.

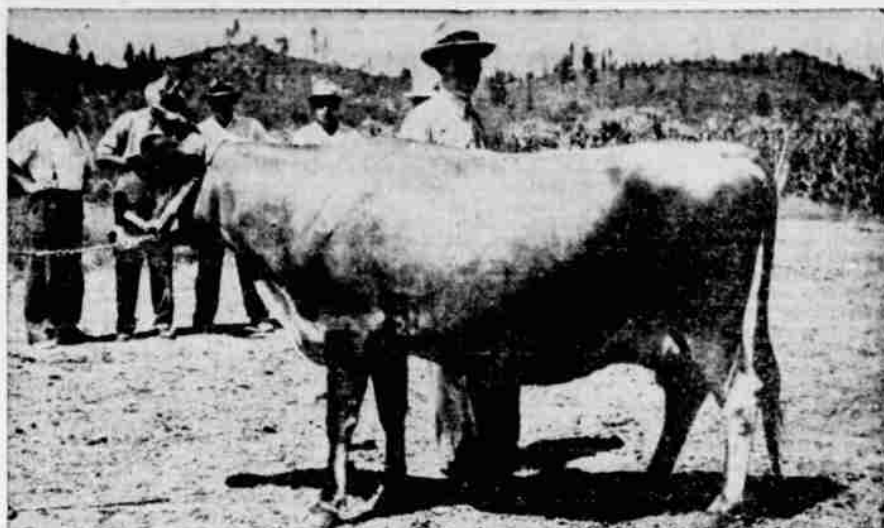
The last stretch to be completed comprised 7 1/2 miles in the Rogue River national forest. The road now extends all the way from Ashland to Klamath lake where it connects with a highway to Klamath Falls.

The new road was inspected today by Karl L. Janouch, supervisor, L. L. Simpson, construction foreman, of the Rogue River national forest, and Franklin D. Macpherson, engineer from the U. S. forest service regional office in Portland.

The new road parallels the old one but is improved particularly as to grade. The project was carried out as a cooperative enterprise by the U. S. forest service, Jackson county and Klamath county. The work has been under way for five years.

Jackson county's part of the road is gravelled; the forest service and Klamath county parts of the road are dirt. The

Southern Oregon Jerseys Given Rating



Five southern Oregon dairy herds received their standardized ratings on Friday and Saturday, August 9 and 10, in official classifications by the American Jersey Cattle club. At top Professor William Regan of the University of California at Davis gives a "Very Good" rating to Astor La Sente Princess in the herd of George Riddle at Grants Pass. (The animal was dry at the time of the rating.)

The dairyman whose herds were classified during the two days pose with Professor Regan. Left to right they are George Riddle, Melvin Poyer, E. B. Poyer, Franz Schutzwahl, William Regan, J. R. McCracken, and C. J. Hunter. At the right are seven "Good Plus" cows from the Poyer farm herd at Ashland. Lower left is Empress Gerlie of Meyers creek, a "Very Good" cow of the McCracken herd. Lower right is Lilac St. Maves

Rex, a "Very Good" bull in the Schutzwahl herd at Grants Pass. The "Very Good" is next to the highest rating obtainable. T. R. Warren, field man for the American Jersey Cattle club, was in charge of the classifications.

Menus of the Day

(By Mrs. Alexander George)
Luncheon for Two
Corn Cakes Maple Syrup
Browned Ham Slices
Diced Pineapple and Pears Tea

Dinner for Two
Fried Dried Beef on Buttered Toast
Summer Vegetable Salad
Bread Grape Jam
Berries Sour Cream Cookies
Tea or Coffee
Corn Cakes

1 1/2 cups flour
3 tablespoons baking powder
2 tablespoons granulated sugar
1/2 teaspoon salt
1 cup cooked corn (fresh or canned)
1 egg
4 tablespoons fat, melted
Mix ingredients lightly. Pour from a pitcher into cakes, on a hot,

greased griddle. Bake until bubbles form on the tops and the cakes are browned underneath. Carefully turn. Spread quickly with butter and stack.

Summer Vegetable Salad
1/2 cup cooked cauliflower
1/2 cup diced celery
1/3 cup cooked lima beans
1/4 cup diced spiced beets
1 teaspoon minced onions
1/2 teaspoon salt
1/4 teaspoon paprika
1/3 cup salad dressing
Lightly mix ingredients with a fork. Chill and serve in a bowl lined with crisp lettuce.

Sour Cream Cookies
1/2 cup fat
1 cup granulated sugar
1/2 teaspoon nutmeg
1 teaspoon vanilla
1/4 teaspoon grated lemon rind
1 egg, beaten (or 2 yolks)
1 1/2 cup thick sour cream
2 cups flour (always sifted before measured)
1 teaspoon soda
Cream fat and sugar. Add other ingredients. Chill the dough and then drop portions from a spoon onto greased baking sheet. Flatten and bake about eight minutes in a moderate oven.

Use Mail Tribune want ads.

NEW HUDSON LINE FOR 1940 VIEWED BY LOCAL DEALER

Returning from a private preview of three new lines of Hudson cars for 1941, J. Orbin Cooksey, Hudson dealer for this city, disclosed today that the new Hudson cars, first of the industry's new model offerings, weeks ago at the company's huge Detroit plant, after many months of preparation involving important chassis changes and an advanced style design. Public announcement of the new cars will follow in a few weeks, Cooksey said.

In describing the new Hudson models, Mr. Cooksey said: "Striking new body styling, longer wheelbases—and an extensive list of improvements and refinements are offered in the three new 1941 Hudson models. Spotlit is an advanced development in color harmony appearing for the first time in a full line of cars in standard production.

"The new development, termed Symphonic Styling by Hudson designers, will offer buyers, at no extra cost, even in the lowest price field, a selection of interior color combinations that harmonize with exterior colors. Up to now, Hudson stylists point out, one upholstery color has usually done duty with every body color. Carpets, floor mats and trim have introduced still other assorted interior colors and tones.

"Symphonic Styling now offers complete harmony between the interior shades of upholstery and trim and the exterior body colors. Basically, the new 1941 Hudson interiors are styled in three color combinations, grey, green and tan—the one included in any car being determined by the exterior color. For example, if tan is the basic color harmony selected, not only the exterior body color but the upholstery, headlining, trim, carpets, floor mats and instrument panel will also be in harmonizing shades of tan.

"The ensemble effect achieved by Symphonic Styling is entirely new in motor cars and can be described as an application of the same harmonious



FOUR IN A ROW—Winning's a habit with Joe Burk (above), world sculling champion. For the fourth successive time he's just won the national single scull title, in regatta at Red Bank, N. J. He vanquished Theophil Dubois of Winnipeg, Can.

color trends observed in well-planned home furnishings, ensembles in women's apparel, and the like.

"All three new 1941 Hudsons are lower, longer and more graceful in silhouette. Front ends are re-styled in a more decorative chrome treatment. Particularly noteworthy is the sweep of the new rear-deck design with the accompanying new design of rear quarter windows and roof panel. This new rear body styling, in combination with a 2-inch reduction in overall body height and an increase in body length of 5 1/2 inches, enhances the smooth harmonious flow of body lines and imparts to the car a new low-slung racy appearance.

"In the lowest price field for 1941, Hudson offers a new 92 horsepower Hudson Six, on a wheelbase increased to 116 inches. A still lower priced model, with the same power and wheelbase, completes the company's entries in the lowest price division of the market.

"Just above this lowest price line is a new 102 horsepower Hudson Super-Six, with a wheelbase increased to 121 inches and a further group of 1941 advancements.

"An entirely new series of models, known as the Hudson Commodore Series rounds out the 1941 line.

Complete details of the new models will be announced when

BRITISH REVEAL WARSHIP LOSS

London, Aug. 16.—Four—Forty-seven British warships, in-

cluding submarines, and 2,514,199 gross tons of British, allied and neutral merchant shipping have been sunk by enemy action since the start of the war, the admiralty said today.

The admiralty pointed out that Germany had claimed that 269 British warships had been sunk or seriously damaged and that 5,078,038 gross tons of British, allied and neutral merchant shipping had been destroyed.

Use Mail Tribune want ads.

Richardson Mineral Springs

for healthful recreation—a vacation combining Health, Happiness and a store of Vitality for months and months to come.

A Modern Fire-proof Air-conditioned Hotel. Attractive Hotel and House-keeping Cottages.

The rates are surprisingly low; the accommodations perfect; environment ideal; the Famous Mineral Waters FREE.

For information write RICHARDSON MINERAL SPRINGS Richardson Springs, Calif.

BOYD'S MARKET

Dial 3681
Prompt, Convenient, Courteous
Delivery Service—4 Times Daily

8:30 A. M. — 10 A. M. — 2 P. M. — 4 P. M.
SPECIALS for Aug. 17th and 19th

Snowdrift
Quick Mixing Shortening
3 lb. 45c 6 lb. 89c
Wesson Oil
Qt. 39c 1/2 gal. 69c

Get this Smart, Colorful Set
only 25¢
8 ICED SPOONS
WITH 1 LIPTON TEA LABEL OR BOX TOP
NEW DURABLE PLASTIC

LIPTON ORANGE PEKOE & PEKOE TEA

1/2 lb. pkg. 39c - lb. pkg. 77c

Peas, Corn or Beans,
303 size,
3 cans..... 25c

Honey, Stewart's
new pack, 5-lb. pail 33c

Deviled Meat
1/4 can—5 for..... 10c

Corned Beef
Swift's Prem., can 20c

Haley Sandwich Spread—
7 1/2 oz.,
2 for..... 15c

Flavor Aid
3 packages..... 10c

Jello, All Flavors
Package..... 4c

PAR GIANT SIZE
A mammoth package containing lovely pottery

PAR REGULAR SIZE
Package tells how you get pottery pieces

Certo, 3 bottles..... 45c

Pen Jell, 3 packages..... 25c

Sure Jell, 3 packages..... 25c

To be certain of results be certain of your sugar, insist on America's Favorite

10-lb. bag 52c 25-lb. bag \$1.29 100-lb. bag \$5.00

PAY CASH AND SAVE

This is "SALAD CELEBRITY WEEK" IN MEDFORD!



TRY THIS VITAMIN VARIETY SALAD
(Supplies Vitamins A, B-1, C, D, E)
7 slices of red apple 1 package (3 ounces) cream cheese
6 slices onion 6 slices orange
12 slices lettuce
11 large prunes
Best Foods Real Mayonnaise

Remove core and slice unpeeled apples crosswise. Peel and slice onions and seeded oranges crosswise. Remove pits from prunes, steam or cook until tender, and cool. Stuff each with cream cheese mixed with 1 tablespoon Real Mayonnaise and insert a half cherry on top. Arrange apple, onion and orange slices on lettuce leaves on chop plate. Garnish with stuffed prunes and whole cherries (as illustrated). Serve with Real Mayonnaise. Serves 6.

SEE YOUR GROCER THIS WEEK FOR GRAND SALAD IDEAS!
Grocers listed below are featuring salad and picnic foods with Best Foods Real Mayonnaise and other delicious Best Foods Products for summer meals.

If you haven't tasted Best Foods Real Mayonnaise before, why not make "Salad Celebrity Week" your time to get acquainted? You'll find it gives your family a new appetite for salads!

You see, Best Foods Real Mayonnaise is different from "Salad Dressing." It contains no starchy filler. It is all mayonnaise—real mayonnaise—and doesn't turn watery when you add milk or fruit juices.

And this Real Mayonnaise tastes even fresher than home-made, for it is made with our own "FRESH-PRESS" Salad Oil which we ourselves prepare fresh each day, as it is needed. Then, in our powerful double-whipper the ingredients are so completely blended that Real Mayonnaise, with all its home-made richness, is even lighter in texture than home-made, and has a light, zestful flavor, free from oily taste.

EMIL'S MARKET

Main and Grape Phone 3705
4 Free Deliveries Daily.
Buy At Emil's and Save!

Superb Quality
Refined in America
10 lbs. 54c
Cash Prices

Club House
Coffee, 3 lbs. 37c

Macaroni,
bulk, 3 lbs. 14c

Crystal White
Soap, 7 bars. 25c

Albers Corn
Flakes, pkg. 5c

MEATS -

Gladiolas—Buy 6 for 15c and get Half Dozen Free with purchase of meat.

Hens, stewing
or baking, lb. 21c

Hams, whole
or half, lb. 17 1/2c

Bacon for
seasoning, lb. 9c

Beef Pot Roast,
lb. 12 1/4c and 15c

Sliced Bacon,
lb. 15c

VEGETABLES-

String Beans, 3 lbs. 10c

Cantaloupes, 3 for..... 10c

New Potatoes..... 10 lbs. 19c

Tomatoes, lb. 2c

Canning Peaches, lug..... 59c

WEEK END SPECIAL

Butterscotch Sundae Cake and Huckleberry Pie To Top Off the Picnic

MODEL BAKERY

Phone 4720

FREE!

A Cord of Select Body Fir

WITH EVERY CIRCULATOR BOUGHT DURING AUGUST



WOOD Circulator \$45.00 and Up

Hansen Hardware SIXTH AND BARTLETT PHONE 2370