

Medford Cooperative Fruit Packing School Proves Value

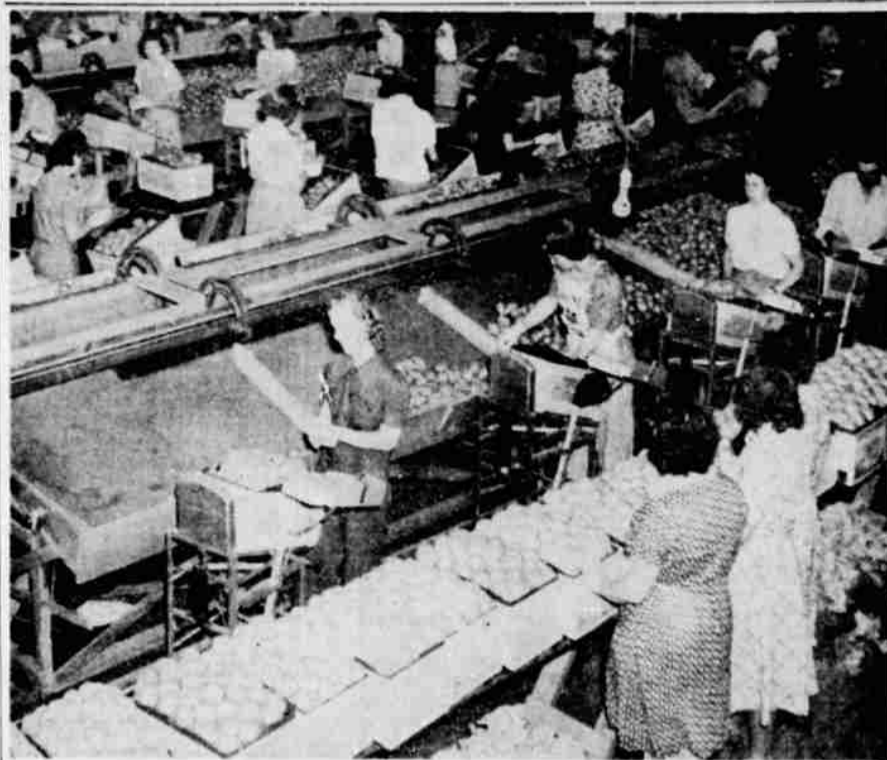
ADVANCED CLASS NOW TURNING OUT 800 BOXES DAILY

Students All Residents of Valley — Selected by Different Packing Companies

By Jeunesse Butler
Medford's first cooperative venture in the instruction and training of local workers to pack the Medford pear crop, the Fruit Growers League Cooperative Packing School which opened Aug. 7 with a registration of 252, is proving its worth and its sponsors have no reason to regret the enterprise, according to leaders in the fruit industry here.

No school bells rang, no solemn faculty assembled, no motor cars disgorged freshmen, juniors or sophomores, nothing of a startling nature announced the opening of this institution, yet it marked a milestone in the history of Medford's world-known industry and the beginning of a social and economic experiment which may become of even more significance than it promises at present.

7 Graduate Open
The first class opened with 132 student packers. Seven who had had some previous experience have now been graduated and seven more called in to take their places. To date, none have been eliminated. Two classes of



Students at Medford's packing school begin the course with cull pears. As their proficiency increases they are promoted, though grade promotion at this "college" means promotion to a grader where fine fruit is packed for market. (Courtesy The Oregonian).

four hours each, are held each day, one in the morning and one in the afternoon. This week, the most advanced are packing good fruit and 800 boxes a day are going out under a neutral wrap and label.

Fortunately, a warehouse not in use this season, Pinnacle Packing company's No. 2, at South Front and Fourteenth

streets, was made available. In the vicinity of the Knight Packing Co., and the Rogue River Valley Canning company, the school is accessible and easily located. Shippers, growers or anyone else interested are invited to call at any time, by Ed Pringle, superintendent, in charge.

"I consider the results of the

school especially good considering the short time it has been going", Mr. Pringle says. He has appreciated the excellent assistance given him by committees in charge, and particularly the chairman of these committees, R. R. Reter of the Rogue River Valley Traffic association, Gordon Kershaw of the Fruit Growers league and Dee Hendricksen of the packing plant superintendents' committee.

Mr. Pringle's experience with fruit packing and marketing has been extensive. Associated with the Betz Packing Co., for many years he traveled throughout Washington, California and northern Oregon. For 12 years he was superintendent of packing schools conducted by the Argentine Fruit Distributors at Buenos Aires, sometimes with 500 students "enrolled". There were no packers in the Argentine when these schools were started.

Experiment with local help has been tried out before in Medford by individual packing houses, some of the companies having had their own schools of instruction during past seasons under the supervision of packing house foremen. They report that local workers are entirely satisfactory and that they have been employing local people whenever possible. The league's school is the first cooperative experiment.

Three-Year Plan
Around 20,000 boxes are expected to be packed at the school during the Bartlett season. After it is all packed the fruit will then be out of the hands of the school and ready for marketing. An advisory board is looking after the institution. It will be conducted for three consecutive years during the Bartlett season, a revolving fund of \$500 was set up at a committee meeting last May, when plans were also made which assured the self-sup-

port of the school. Frequently Medford residents inquire concerning the difference between the two Medford organizations concerned only with matters relating to the fruit industry: the Fruit Growers' League of Jackson Co., Inc., and the Rogue River Valley Traffic association. The Fruit Growers' league is an organization wholly composed of pear growers. It has been in existence for years. It holds an annual meeting every January and its board of directors, elected at this meeting, convene once a month at the Chamber of Commerce building. A standing invitation is extended to any pear grower in the Medford district to attend any board meeting he desires.

As the name implies, the league functions for the purpose of discussing and handling the wide variety of problems of pear growing and to sit in at just one of these meetings might be a revelation to many Medford residents who might learn for the first time how many and various are the problems of the pear grower.

The Rogue River Valley Traffic association is composed of Medford packers and shippers. It has also been a going organization for some time. Members of this organization hold a luncheon meeting every Thursday. Naturally, it is concerned with matters relating to the packing and marketing of the pear crop and there is much indeed for this group to consider.

Start On Culls
Reverting to the packing school, the beginning packers are practicing on culls only. As soon as they become qualified they pack good fruit that will be sold on the market. Each packing house is furnishing some fruit each day, pro-rated on the basis of last year's total packout of the different varieties. The packed fruit, wrapped, labeled and marketed under a neutral brand will be sold through a marketing committee and the money pooled, to be returned pro rata to each packing house.

Students, who must be residents of the Rogue River valley and between ages of 18 and 30, were selected and are being sponsored by the different packing houses and as soon as making good will be given jobs. Registration at the school is now closed.

W. C. T. U. OPPOSES CONSCRIPTING MEN

Chicago, Aug. 16.—(AP)—An anti-conscription resolution was adopted by the Woman's Christian Temperance Union at closing sessions of its 66th national convention.

The measure asserted that conscription or "forced labor" during peacetime constituted an abrogation of civil rights and said democratic institutions of the nation were "fully adequate to deal with the present situation."

Another resolution approved yesterday advocated national prohibition of the manufacture of alcoholic liquors as part of the defense program.

Use Mail Tribune want ads.

CLIPPER MAKES AUCKLAND TRIP

Auckland, N. Z., Aug. 16.—(AP)—New Zealand was brought today within 12 days of London when the Pan American Airways' California Clipper slipped down upon the harbor's waters just before dawn on its first passenger flight from the United States.

The Clipper, carrying a party of newspapermen, departed from San Francisco last Saturday and landed at 3:26 a.m. today, six days by the calendar but five days actual flying time, from the United States. A day was lost crossing the international date line, and there was another 24 hour delay at Canton Island to repair a hole poked in an aileron by the radio mast of a shore launch.

Ample Hop Labor
Portland, Aug. 16.—(AP)—Ample labor is available for the early harvest in the Oregon hop yards, the agricultural marketing service said in its weekly survey today.

In summer, one way to keep cool
Is swimming in ocean or pool;
Another's RAINIER
The drink of GOOD CHEER—
The man trying both is no fool!

Rainier BEER & ALE
MAILED BEVERAGE COMPANY - SAN FRANCISCO

Snider Dairy and Produce Co.,
Distributors, Medford.

"Buckaroo Days" ARE HERE

AND YOUR "BUCK" STILL BUYS MORE RIGHT HERE AT WESTERN THRIFT STORE

- "Buck" Stretchers for Saturday**
- WHISK BROOMS A good 25c quality, each... 9c
 - RAT TAIL COMBS Black, regular size, each... 3c
 - ARMOUR'S DOG FOOD 10c quality, close-out, can... 6c
 - \$2 COMPACTS, HUDNUTS Discontinued numbers... 98c
 - 75c DOAN'S PILLS Kidney diuretic... 43c
 - \$1.35 PINKHAM'S VEGETABLE COMP. 79c
 - \$1.25 ABSORBINE, JR. Antiseptic Liniment... 69c
 - 50c Dr. LYON'S TOOTH POWDER... 29c
 - 35c PREP BRUSHLESS SHAVING CREAM... 3 FOR 50c
 - RUBBER GLOVES Slight factory seconds... pair 9c
 - PACKERS WRIST BANDS Double strap, leather... each 10c
 - HEAVY WAX PAPER 50-foot rolls... 5c
 - 10c SWEET HEART TOILET SOAP... 4 FOR 15c
- TOBACCO IS ALWAYS FRESHEST WHERE SOLD FASTEST**
- Chesterfields FIFTIES, Flat or Vacuum... 27c
 - 15c VELVET... 10c
 - 15c BIG BEN... 10c
 - 15c CHESAPEAKE... 10c
 - 15c PRINCE ALBERT... 10c
 - 15c HALF & HALF... 10c
 - CAMELS LUCKY STRIKE CHESTERFIELD West American FOR FATIMA OLD GOLD OLD MILL POLARS SPUDS Sweet Caporal Including all taxes... 2
 - 25c COUNTRY GENT... 19c
 - 25c OUR ADVERTISER... 19c
 - 50c CORN CAKE... 39c
 - 35c HIMYAR KIT... 29c
 - 15c OIL SILK POUCH... 5c
 - DOMINOS SENSATION PAUL JONES MARVELS 20 GRAND WINGS By the Carton... 10c including all taxes
 - Book Matches... ctn. 7c

- Men's Cotton Socks Made in China pr. 5c
- Men's Linen Handkerchiefs Hemstitched Borders 5c
- Black Tire Tape 1/4 lb. rolls 9c
- Bleached Dish Towels Generous Size ea. 5c

PRESCRIPTION SERVICE

Avail yourself of our Complete Prescription Facilities with the assurance that each prescription will be filled exactly as your doctor ordered, with only the finest of ingredients.

VITAMIN PRODUCTS

If you are Vitamin Conscious and Thrifty, too, it will be worth while to check our complete assortment of nationally known, finest quality Vitamin Products.

SCHOOL DAYS Will Soon Be With Us Again, and Again Western Thrift Will Have a Very Complete Line of Necessary School Equipment at Deep Cut Prices. Wait for Our School Opening Announcement.

Dial **WESTERN THRIFT** 30 North 3874 Central
MEDFORD'S ORIGINAL PRICE CUTTERS

We're BOWLING Them Over

Every day with lower prices, easier parking, better deliveries, better meats, better produce and a more friendly service.

- FRUITS and VEGETABLES**
- LETTUCE Extra fancy Iceberg, lge. size 2 heads... 9c
 - Cantaloupes Local grown fancy, 23 size, ea. 5c
 - GRAPES Thompson Seedless, Ribiers, Tokay, Muscats 4 lbs. 25c
 - LEMONS 588 Size 2 doz. 25c
 - GREEN PEPPERS... each 1c Large smooth ones. Try them stuffed with our pure Ground Beef
 - POTATOES... 10 lbs. 25c Extra fancy Yukima Gems. These are really nice. Try them baked.
 - CELERY Utah Fancy Large Bunches bunch 10c
 - CELERY HEARTS bunch 10c Extra Fancy Portland

We will have a very complete line of **CANNING PEACHES** Can them soon, they will not last long. Our produce department is bubbling over with items to spur that jaded summer appetite, among them are summer squash, Danish squash, radishes, green onions, green corn, egg plant, okra, limes, fancy honey and Persian melons.

C and H PURE CANE SUGAR
is never in cup bottoms... it dissolves too quickly

100 lb. bag \$5.09

FIG BARS

Factory shipment Whole Wheat or Real Cake 2 lbs. 19c

Although beef prices have gone clear out of sight, we are still featuring steer beef at OUR SAME LOW PRICES.

- VEAL ROAST, milk fed fancy, lb. 14 1/2c
- BREAST OF VEAL, nice for pot. lb. 11c
- VEAL CHOPS, rib or loin, lb. 19 1/2c
- LEG of LAMB, real spring lamb, while they last, lb. 22c
- PORK STEAKS, corn fed pig pork, lb. 16c
- PORK ROASTS, corn fed pig pork, lb. 15c
- BACON, by the piece, Saturday only, lb. 19c

For those cold lunches we feature a large assortment of lunch meats and potato salad.

PAY LESS-PARK EASIER RIVERSIDE MARKET

FREE DELIVERY CHUCK BATEMAN, Owner DIAL 2117

Big 1940 Complete WEBSTER DICTIONARY 10c

Also 32 Pages Full Color Maps

Send 10 cts. and containing bond from a tin of FOLGER'S Coffee to the FOLGER COFFEE CO., San Francisco.

FOLGER'S COFFEE

- Lb can... 24c
- 2 lb. can... 47c

There will be a Folger's Coffee Demonstration Saturday. Come in and try a cup.

Pork and Beans VAN CAMPS

- No. 2 1/2 cans... 2 for 25c
- 300 tall cans... 3 for 25c

Keep a supply on hand. They are just the thing for these busy days.

Sardines 3 oval cans 25c Mustard and Tomato Sauce

WAX PAPER

Cut Rite, extra heavy 2 for 25c 125 foot rolls

TOMATO JUICE

Swift's No. 2 1/2 can. This is an exceptionally good buy... 10c

Swift's Deviled Meat

3 cans... 10c

Drifted Snow Flour

49 lbs. \$1.49

Borene, lge. size... 29c

OLDSMOBILE Clean Up Time

WE ARE IN EARNEST ABOUT CLEANING UP OUR USED CARS—THAT'S WHY WE HAVE SLASHED PRICES ON ALL OUR STOCK.

- 1938 Buick Special 4-Dr. Sedan... \$645.00
- 1938 Willys 4-Dr. Sedan... 345.00
- 1937 Dodge Coupe, very clean... 465.00
- 1936 Olds 4-Dr. Sedan... 465.00
- 1936 Olds 8 Coupe, low mileage... 465.00
- 1936 Dodge 4-Dr. Sedan... 395.00
- 1936 Ford De Luxe Coupe... 345.00
- 1935 Chevrolet Master 2-Dr. Sedan, radio and heater... 295.00
- 1934 Chrysler 4-Dr. Sedan... 245.00
- 1932 Ford 4-Dr. Sedan... 145.00
- 1931 De Soto Sedan... 65.00
- 1930 Chevrolet 2-Door Sedan... 65.00
- 1930 Hudson Sedan... 45.00
- 1928 Buick Sedan... 25.00
- 1927 Willys Knight Sedan... 35.00

Medford Garage

OPEN EVENINGS AND SUNDAY
PHONE 2884 121 N. BARTLETT