

'FIDDLING BEES' PLANNED IN SOUTH TO SAVE FORESTS

Government Hopes to Keep Hill Billies from Setting Fires by Use of Music.

Atlanta, Ga., July 29.—(AP)—The government is planning to fight a strange epidemic of southern forest fires with fiddles. They are going at it that way because they have traced the fires to human "cussedness". They figure that music hath charms to soothe the ornery beast, music and some other interests which may also be employed in the campaign.

There are 9,000,000 acres of federal forest lands in the south. Over half the area is burned every year, accounting for nearly half of the nation's forest fires.

Boredom Breeds Fires

Foresters reported that half the fires were set deliberately by the backwoods people among the 100,000 residents within the reserves.

The government sent down Dr. John P. Shea, University of Kansas psychologist, to find out why.

The mountaineers explained that the intentional fires killed boll weevils, snakes, ticks, bean beetles and fever germs; kept their fields from choking with brush, and "cleaned up the woods."

After living among the mountaineers several months, Dr. Shea decided they were kidding—probably kidding themselves. They really set the fires, he concluded, because they were bored with the traditional recreations of settlin', spittin', and whittlin', and because of a poverty neurosis.

The biggest money most of them had ever seen was the \$30 a month earned by the civilian conservation boys who had invaded their mountain retreats. The CCC's activity included fighting fires. Therefore, "make 'em sweat to earn that pay..."

Doubt Forest Benefit

Ordinary fire prevention educational work didn't do much good. The mountaineers were dubious about trees preventing the washing away of vital soil, and, for the rest—"there may be a few more squirrels when they don't let us burn the woods—but there are more rattlesnakes, too."

For a solution to the problem, Dr. Shea turned to the archaic social system that is at the bottom of the trouble.

An outstanding feature of that system is patriarchy—"pappy" is the backwoods family dictator. If the government could persuade pappy to lay off the incendiary, the battle would be half won.

The psychologist proposes to establish backwoods "centers" where the mountaineers could have fiddle dances and other recreation more wholesome than just settin'.

Unobtrusive rangers would be the official hosts at the centers, but the pappies would be given the responsibilities for the use and care of centers. And they would include—

Nearby 200-500 acre plots quietly demonstrating how forest cultivation, soil conservation and other modern agricultural practice could improve farming. And pretty soon, Dr. Shea is sure, between the activities and the enlightenment, there would be little time or place for setting forest fires.

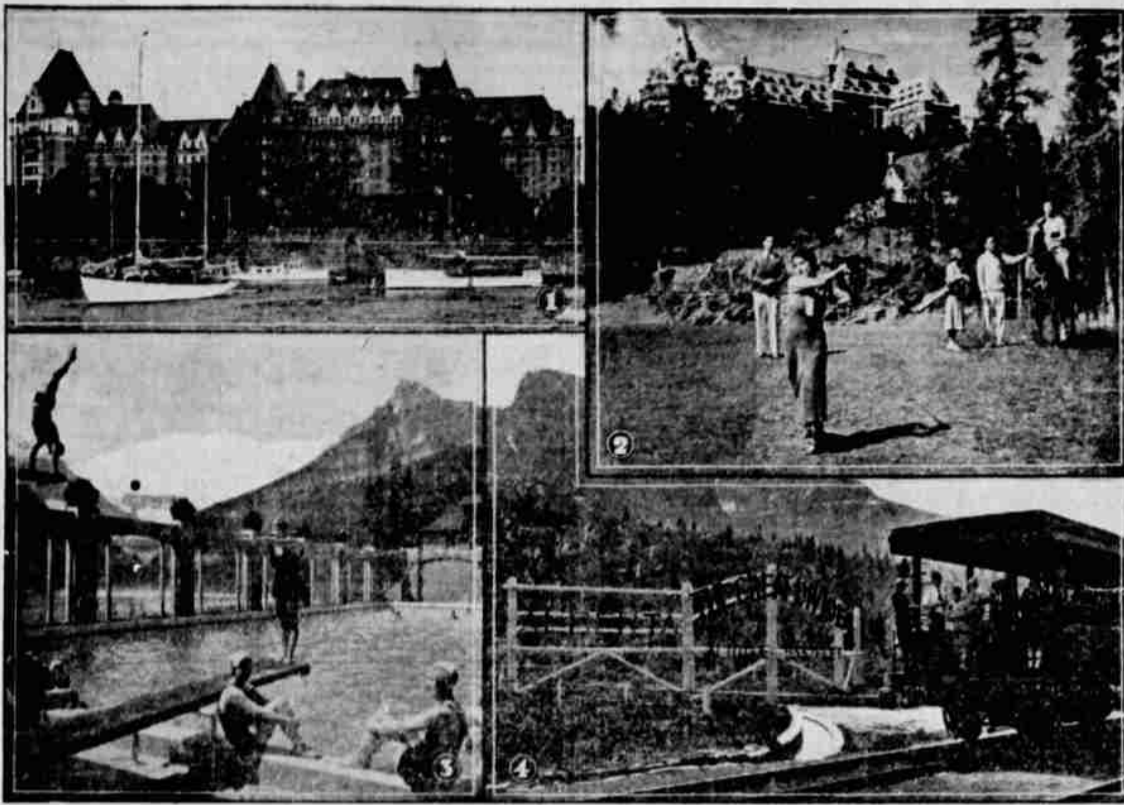
PEACHES READY ABOUT AUG. 15TH

Peach picking will start about August 15, and a good crop is in prospect, Horticulturist C. B. Cordy reports. Most of the crop is in the Ashland and Talent districts. The commercial tomato crop will be ready to harvest about September 1, though some of the varieties will be ready before then. Local grown tomatoes are now on the market.

CHAMBERLAIN TO UNDERGO KNIFE

London, July 29.—(AP)—Former Prime Minister Neville Chamberlain entered a hospital today to undergo an operation. The reason for the operation on the 71-year-old lord president of the council was not made public, although persons close to him said he expected to be away from his office only about two weeks.

Friendly Welcome Awaits Americans at Canadian Resorts



The vacation that "is different" is offered to those visiting Canada's Evergreen Playground and famous mountain resorts high up in the Canadian Rockies. Every summer sport and activity may be enjoyed at the various resorts and famous hotels, located throughout the great scenic wonderland. United States citizens are welcome everywhere, and no passports are necessary. The illustrations above include (No. 1) The noted Empress hotel, situated on the inner harbor at Victoria, Vancouver island, and reached by Princess steamships sailing twice daily from Seattle. (No. 2) Mile-high golf on the championship 18-hole course at Banff, with the palatial Banff Springs hotel in the background. (No. 3) Glass-enclosed swimming pool at Continental Chateau, Lake Louise, in the Canadian Rockies. (No. 4) A stop at the Great Divide, between British Columbia and Alberta, at an elevation of 5,332 feet. Showing the Open Observation car, featured on transcontinental Canadian Pacific trains, through 600 miles of Alpine mountain scenery, from Vancouver, B. C., to Calgary.

FINISH WORK ON ROGUE WING DAM NEAR GOLD HILL

Gold Hill, July 29.—(Spl.)—Work on the 400-foot wing dam gates and canal, which are a part of the hydro-electric power plant being built by the Beaver Portland Cement company at Gold Hill, was completed July 25. Work completed so far on the project has cost approximately \$75,000. The \$200,000 project is located on Rogue river about one mile above Gold Hill.

The completed wing dam is from 15 feet in places to just a few feet in height and will catch about one-half the flow of the river. The canal, which has been widened to 30 feet and deepened to six feet, will deliver the water to the power house and will carry 1,000 second feet.

The water will be turned into the canal and specifications completed to the satisfaction of the state fish commission. It is expected that work will be started on the power plant itself in a week or ten days. The plant will be located just above the present pump house.

The plant will be 60 by 40 feet in dimension and of concrete and timber. The 1500-kilowatt turbine will generate its power from an approximate 33-foot drop of the canal water through the spillways into Rogue river.

R. J. Stuart & Sons of Medford have charge of construction of the project. Gilbert Stuart reports he has taken around \$200 in gold from the canal bed, during the course of excavation, and states that some of the ground there is very rich.

PACK FIRST PEARS MIDDLE OF WEEK

Two or three packing plants of the city expect to start operations Wednesday or Thursday noon, and Assistant County Agent C. B. Cordy said today picking would start on those two days in the early orchards, and be in full swing by the middle of next week. Pressure tests show that some of the Bartlett's are now ready to pick.

Federal Inspector Fletcher Fish has named deputy inspectors for the coming season, their duties to start August 1, as follows:

D. H. Slend, C. W. Holdridge, D. C. Goddard, H. W. Glenn, C. W. Glenn, George H. Merritt, Jay Terrill and Thayne Ford. All have served in previous seasons. No prices have yet been offered for cannerly Bartlett's through a couple of representatives are said to be here.

MOTORISTS ATTENTION

If your motor boots or radiator leaks, see or call HOOPER'S RADIATOR SERVICE 7 S. Bartlett Phone 492

WATER CARNIVAL AT ASHLAND ENDS CCC SWIM SCHOOL

The annual Medford district CCC water safe and lifesaving school came to an end with a water pageant at Twin Plunges in Ashland Saturday night, during which enrollees gave a demonstration of what they learned in the one-week session.

Presentation of prizes was made by Col. Harvey H. Fletcher. Awarding of Red Cross lifesaving badges was done by Seth M. Bullis, county Red Cross chairman. Joseph W. Scooby, CCC staff officer, made the introduction.

Following are results of the competition and demonstrations:

300-foot free style relay race—Won by Robert A. Arnold, Camp Mt. Shasta; Vincent R. May, Camp Mineraville and Clyde V. Sween, Camp Mineraville.

100-foot free style race: Won by Wallace E. Thelander, Camp Hat Creek.

100-foot underwater swim: Won by Wayne W. Maribugh, Camp Seiad.

Spoon and lemon race: Won by William H. Clouse, Camp Tule Lake.

100-foot backstroke race: Won by Leonard F. Sabel, Camp Harrison Gulch.

Denim race: Won by Jesse B. McGill, Camp Annie Springs.

Free-for-all race: Won by Karl S. Courtwright, Camp Alkali Lake.

Fancy diving: Won by Paul C. Clement, Camp Harrison Gulch. Wayne Maribugh won the event, but because he also won a previous event Clement was awarded first prize.

There were also lifesaving demonstrations. All event winners and those participating in exhibitions were awarded prizes of clothing.

Graduates of the school will be designated as life guards at CCC camps in the Medford district. Each of the 29 camps sent two students to the school.

BRIDGE PAINTER LIVES AFTER 150-FOOT FALL

Tacoma, July 29.—(AP)—A 26-year-old painter who hurtled 150 feet from the new Tacoma narrows bridge into Puget Sound yesterday when a scaffold railing broke was reported recovering today.

The man, Peter Krieter of Tacoma, landed on his back with terrific impact, fellow workmen said. However, he was able to swim 40 feet in the fast current to a bridge launch.

THE 4 FACTORS OF HOTEL IMPORTANCE!

1. COMFORTABLE ROOMS
2. GOOD SERVICE
3. PLEASANT SURROUNDINGS
4. SENSIBLE RATES

COFFEE SHOP - TAVERN
From \$1.50 (near bath) - From \$2.00 (with bath)

Hotel SAN DIEGO

SAN DIEGO, CALIFORNIA

SANITARY DISPLAY OF FOODS WILL BE FORCED IN STATE

State Fruit Inspector C. R. Jester, with headquarters at Grants Pass, announced today the start of a state-wide drive for enforcement of the law requiring fruits and other food-stuffs, except those specifically exempted, to be displayed in showcases or similar devices. The purpose is to prevent contamination from flies, dust or other causes.

"The sanitary laws of Oregon provide that the display of food products is prohibited unless such products are enclosed in a showcase or similar device which will protect the same from flies, dust or other contamination; provided that food products other than fish, meat and meat products, that necessarily have to be peeled, pared or cooked before they are fit for consumption, may be displayed without a showcase or similar device; provided, that in such display the bottom of the container be at least 18 inches above the surface of the sidewalk, floor, ground or other surface where such container sets."

Investigation was being made today of the fire that late last Saturday destroyed the D. L. Swihart sawmill in the upper part of Evans creek valley.

Loss was estimated by the state forest patrol office at \$4,000 to \$5,000. The mill had closed at 11 a. m. for the weekend and no one was at the plant when the fire occurred at 4:30 p. m., the forest office reported. Cause of the blaze could not be determined immediately, the office explained.

The mill had been in operation only three weeks and so

FIRE RAZES MILL ON EVANS CREEK

Investigation was being made today of the fire that late last Saturday destroyed the D. L. Swihart sawmill in the upper part of Evans creek valley.

Loss was estimated by the state forest patrol office at \$4,000 to \$5,000. The mill had closed at 11 a. m. for the weekend and no one was at the plant when the fire occurred at 4:30 p. m., the forest office reported. Cause of the blaze could not be determined immediately, the office explained.

The mill had been in operation only three weeks and so

Investigation was being made today of the fire that late last Saturday destroyed the D. L. Swihart sawmill in the upper part of Evans creek valley.

Loss was estimated by the state forest patrol office at \$4,000 to \$5,000. The mill had closed at 11 a. m. for the weekend and no one was at the plant when the fire occurred at 4:30 p. m., the forest office reported. Cause of the blaze could not be determined immediately, the office explained.

The mill had been in operation only three weeks and so

Investigation was being made today of the fire that late last Saturday destroyed the D. L. Swihart sawmill in the upper part of Evans creek valley.

Loss was estimated by the state forest patrol office at \$4,000 to \$5,000. The mill had closed at 11 a. m. for the weekend and no one was at the plant when the fire occurred at 4:30 p. m., the forest office reported. Cause of the blaze could not be determined immediately, the office explained.

The mill had been in operation only three weeks and so

Investigation was being made today of the fire that late last Saturday destroyed the D. L. Swihart sawmill in the upper part of Evans creek valley.

Loss was estimated by the state forest patrol office at \$4,000 to \$5,000. The mill had closed at 11 a. m. for the weekend and no one was at the plant when the fire occurred at 4:30 p. m., the forest office reported. Cause of the blaze could not be determined immediately, the office explained.

The mill had been in operation only three weeks and so

LEGION ORGANIZES FOR SERVICE IN DISASTER RELIEF

Completion of the organization of Medford American Legion post's disaster relief company was announced today by Lloyd A. Williamson, post commander.

The commander and his staff officers have been working for some time on organization of the company as authorized by the national American Legion headquarters.

Purpose of the disaster relief company, Mr. Williamson explained, is to render the assistance of the American Legion in major disasters and minor disasters that may become of major proportions if help is not available immediately. Such disasters include floods, fire, earthquakes, tornadoes, epidemics or other occurrences that threaten the loss of life and the destruction of property, the commander said. Strike-breaking activities are definitely not embodied in the disaster relief company's functions, he emphasized.

With its disaster relief company now fully organized, Medford post is prepared to assist in any local emergency and to work in close cooperation with the American Red Cross and other relief agencies, Mr. Williamson pointed out.

The disaster relief company is composed of eight sections or platoons: first aid, communications, supply, rescue, guard and patrol, transportation, shelter and utilities. Activities of the platoons are coordinated and directed by a headquarters staff under Commander Williamson. "Personnel assignments have been made solely on the basis

of the members' experience and training," Mr. Williamson said. "The entire personnel of the company will be trained to function efficiently at a minute's notice. All administrative and cooperative functions are worked out in minute detail."

Don't miss this tempting "sampler" of Western Travel—and Standard Extra Service! This week, a beautiful, enlarged Art Print of the scene shown on the right—will be given you free! The supply is limited, and they're going fast—so hurry to Standard.

STANDARD OIL COMPANY OF CALIFORNIA



JUST TO GET YOU BETTER ACQUAINTED WITH STANDARD'S EXTRA SERVICES

Everybody's enthusiastic about the beautiful get-acquainted Scenic Art Prints now offered free at Standard—we know you will like them, too. And the more you travel, the more you'll like the travel extras you get at Standard—where extra service is routine, everyday performance. Extra local information wherever you go—road conditions, points of interest, accommodations, maps. Clean rest rooms. Special attentions for your car—servicing the tires including your spare, checking "under the hood," testing your battery. You can expect extras at Standard. So this week drive in for a tankful of Standard Gasoline Unsurpassed—and get them!

See the West with Standard—Your car gives low-cost transportation

USE OUR NATIONAL CREDIT CARD Good in your neighborhood and from Coast to Coast