

HOW YOU CAN FORGET THOSE WAR WORRIES!

The following article, presented in co-operation with the Oregon State Motor association, is one of a series designed to promote travel in the Pacific northwest. Today's article has been condensed from a motorlog appearing in The Sunday Oregonian, June 30.

BY ROBERT C. NOTSON
City Editor, The Oregonian

A TRIP to the Golden Gate International Exposition offers a decided palliative, if not an absolute cure, for arm-chair shell shock.

This is the conclusion of the members of an Oregonian-Oregon State Motor association motorlog party which has just completed a hasty round trip to Treasure island and its many bizarre, educational and inspiring appointments.

Members of this party, all of whom confessed to rather advanced cases of war nerves after days of brooding over the catastrophic events in Europe, reported uniformly good effects from the treatment.



"The fair's architecture, grounds, statuary, flowers and general arrangement are as thrilling as they have been pictured... Above, one of sculptures in Fountain of Western Waters.

Included in the group were Mr. and Mrs. James Nelson, who visited the fair last fall, and Mrs. Notson and myself, who were making our first visit to the exposition.

We motored out of Portland early Saturday night so as to "break the back" of our long journey ahead of the holiday traffic.

Agate Beach Inn was the goal of our white Ford V-8 the first night out, and on Sunday we slid easily down the coast to Benbow Inn, just beyond Eureka.

And so on south through the vineyards near Santa Rosa and into San Francisco Monday afternoon over the graceful Golden Gate bridge. Although we had traveled all the way from Oregon through sunshine, we met clouds and a cool breeze as we approached the bay environs.

We found both comfort and courtesy at the Whitcomb hotel and from there we sallied forth to enjoy San Francisco and the fair. The highlights of our three-day stay were:

1. The Ice Follies, a show of exceptional merit with right proportions of pulchritude, skillful grace, comedy and precision.
2. A journey along San Francisco's waterfront, including Fishermen's wharf and a luncheon at the Cliff House overlooking the seal rocks and the entrance to the Golden Gate. Our return through Golden Gate park was so rapid that we regretfully passed up the aquarium.

3. A trip along the peninsula to San Mateo, Redwood City and Palo Alto to visit friends and see Stanford university.

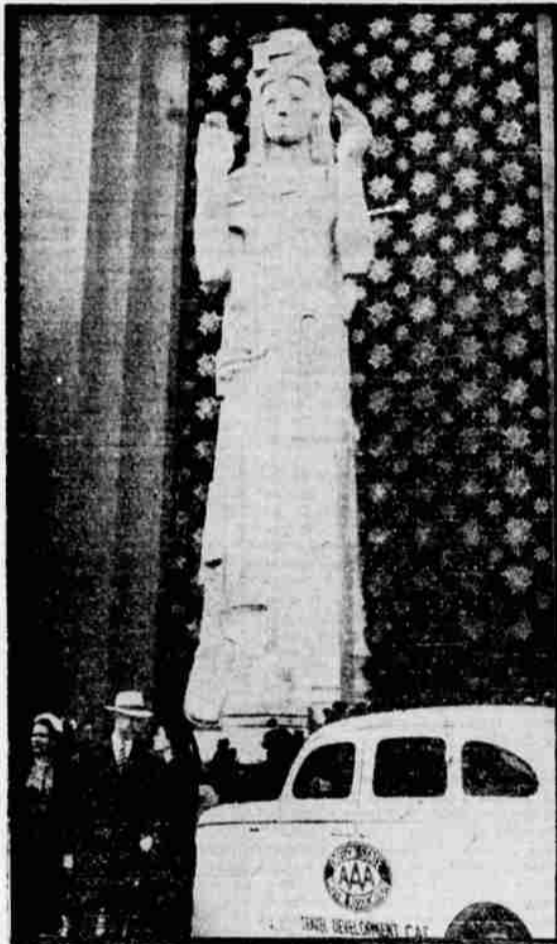
4. And, of course, the exposition on Treasure island.

Despite prior warning, it was a surprise to our party to see women wearing fur coats in San Francisco in June, but there are times when such garments are very desirable. Two of the days we were on the island the sun was bright but the sea breeze was brisk.

Gracie Allen, whom we heard and saw broadcast, wore a gray squirrel coat one night. We sat by her on an elephant train.

Question No. 6: How long does it take?

A very nice trip can be made in a week—two days down, three days in San Francisco and two days home.



The motorlog party pauses in the Court of the Pacific while the cameraman works.

FIVE AIR BASES BEING BUILT FOR ALASKA DEFENSE

Uncle Sam to Spend \$25,000,000 On North Pacific Bulwark—Work Hurried

By Devon Francis

Associated Press Aviation Editor.

Fairbanks, Alaska, July 3.—(AP)—On 500 acres of a flat, sun-seared piece of interior Alaska the army has completed preliminary work for the runways of an airport which will serve both as an air defense base and as a tactical training center at the "top of the world."

Five air bases are under construction in Alaska by the army and the navy.

At a cost of perhaps \$25,000,000 the services propose to set up at least the embryo of an air defense system.

For years Alaska, as a military problem, has not existed in army and navy budgets. Now, with a world political and military situation which has made both the administration and congress apprehensive, Alaska has been designated as the north Pacific bulwark of our air and sea defense.

Sub Base Also
Since last fall the survey and actual spade work at Sitka, Anchorage, Fairbanks, Unalaska (Dutch Harbor) and Kodiak has progressed more rapidly than military men care to admit. Unalaska will be a submarine, as well as an air, base.

At Sitka the plane hangars already are up. The first contingent of infantrymen was landed last week at Anchorage for the protection of the army air base. At Fairbanks a winter-long experiment on the "staying qualities" of concrete for run-

ways in temperatures of 50 and 60 degrees below zero is complete.

Into the territory of Alaska all summer there have drifted unobtrusively army and navy engineers, tactical experts and fliers.

Comprehensive Plans
Army plans for the air defense of Alaska actually are more comprehensive than have been made public. But even so, it is a question whether the bases and armament which will be poured into this point of the Pacific "defense triangle"—Hawaii, the Aleutians and Panama—will be cloth cut to fit the job.

Territorial Governor Ernest Gruening says Alaska needs more than 100 first-class airports for defense. It has no airport of that caliber yet. The five bases and two or three others projected, including one at Metlakatla, an island just south of Ketchikan, in the Alaska panhandle, protect Alaska's "back door." But the "front door," draining off the Bering slope, the northwest Arctic slope and the Seward peninsula, is wide open.

Apart from ordinary air defense outposts in Alaska for the protection of the continent from the west is the importance of the areas back of the "front door" as a source of raw material.

Coal and Oil
On the Bering slope are coal deposits, outcropped so strongly that the whaling ships of old used to refuel there. There is oil, too. The natives of the Arctic slope use oil-staked peat for heating and cooking. There are rich copper deposits on the Alaska peninsula, a prize for any metal-hungry aggressor. On the outermost point of the Seward peninsula, on Cape Prince of Wales, are the York tin deposits.

The Aleutian chain of islands remains a largely unsounded and unexplored area to the navy. The fur seal area of the Priofol group is unprotected except for casual visits of bureau of fisheries boats and planes.

CAMPFIRE BRINGS TROUBLE FOR TRIO

R. J. Grey, principal of the Prospect school, charged with leaving a campfire unattended and burning, entered a plea of guilty in justice court yesterday afternoon, and was given a suspended sentence of 60 days. A similar charge filed against two boys, Bud Fredericks and Alva Wright, was dismissed.

Grey and the two boys, during an outing at Red lake on the Skyline trail of the Cascades, had attempted to put out their fire with water and dirt, but did not do a complete job, it was shown.

L. A. Thomas, charged with obtaining credit by false pretense, waived preliminary hearing and was ordered held to await grand jury action, under \$500 bond. Thomas allegedly gave the Gates Auto company a check for \$98 for a chattel mortgage on a truck, without funds in the bank.

E. N. Young was assessed \$15 and costs for being drunk on a public highway. James F. Hickman was assessed \$2.50 and costs for driving an auto without lights. Rece L. Herndon and Chester B. Keene, charged with operating an auto with improper lights, were each fined \$1 and costs.

Arizona growers shipped 35,000,000 cantaloupes to the nation's markets in the summer of 1939.

VACATION CAMP FOR HOMEMAKERS AT LAKE O' WOODS

Site Changed From Rocky Point to Obtain More Facilities; Opens On July 14

The Jackson-Klamath vacation camp will be held at Willow Springs forest camp at Lake o' the Woods, July 14-18. Mrs. Mabel C. Mack, home demonstration agent, announced today.

The camp site has been changed from Rocky Point to Lake o' the Woods because of the lack of swimming facilities and equipment at Rocky Point. The Lake o' the Woods site will be more convenient for Jackson county homemakers, and those who enjoy swimming will welcome the change. Mrs. Mack stated.

The camp will be held under the direction of Mrs. Winifred Gillen, Klamath county demonstration agent and Mrs. Maude Pervine, Columbia county home demonstration agent, as assistant. Mrs. Pervine will also teach metal craft work. Miss Evelyn Brockway of Medford will be life guard and swimming instructor.

Emphasis on Rest.
The camp program will include crafts work, games and campfire programs. The activity program will include swimming, boating and hiking. There will be emphasis on rest and recreation.

The camp equipment will include kitchen and dining room facilities, tents for sleeping quarters and army cots. Each homemaker enrolled will need to bring only bedding. Any homemaker from city or country over 18 years of age, desiring a restful, inspirational and recreational vacation at a minimum cost, should call the home demonstration agent at once and enroll for the camp. Enrollment is limited to 30 homemakers.

J'VILLE BOY HELD IN THEFT OF AUTO

Marvin R. Wills, 24, of Jacksonville, arrested by state police

and the sheriff's office yesterday on a warrant from Siskiyou county, California charging him with the theft of an automobile, has waived extradition and was being held in the county jail here awaiting the arrival of California authorities, who will return him to Yreka, state police said. Wills was arrested yesterday afternoon at Jacksonville. The automobile he is charged with having stolen is at present stored at Jacksonville, police said. The extreme breadth of the state of Delaware is 35 miles.



The delicious taste of ice-cold Coca-Cola is only one of the reasons millions welcome it at home. It has the charm of purity and the gift of making you feel really refreshed. Your dealer carries the handy six-bottle carton.

BOTTLED UNDER AUTHORITY OF THE COCA-COLA CO. BY
COCA-COLA BOTTLING CO., of Medford, 601 No. Grape St.—Phone 778

PUBLIC CLOSEOUT SALE

APPROXIMATELY 200 CARS MUST BE LIQUIDATED AT PRICES REDUCED FROM \$50 TO \$150 ON EACH CAR

24 HEAVY DUTY TRUCKS AND TRAILERS, SAVE UP TO \$500 ON EACH. HEAVY TRACTOR 1-3 LESS.

BALANCE OF OUR STOCK NOT LISTED HERE FOR LACK OF SPACE IS LIKEWISE REDUCED

Here is a never to be forgotten opportunity to participate in a multitude of circumstances. This condition has been brought about by unforeseen measures of 100 PERSONAL a nature to be published. The TREMENDOUS PRICE REDUCTIONS for this immediate ACTION should prove to you the seriousness of this PUBLIC CLOSEOUT SALE.

Our time for immediate disposal of this entire stock is limited, and our feelings in this situation are purely impersonal. We know only one way to liquidate at a tremendous sacrifice, as requested by their legal owners; first reduce all prices from \$50.00 to \$150.00 on passenger cars and up to one-third on commercial equipment, such as trucks, tractors, etc. . . and then give you generous allowances for your present trade-in; whereby, in most cases, it will make the necessary down payment. Your trade-in need not be all paid for to

Year	Description Code and Makes	Stock Price	Public Close Out Sale Price	Dr. Payment Cash or Trade	Instalments Mo's
38	Ford 2 dr. Sdn., Orig. finish, seat covers	575	495	165	18
38	Willys Custom Sedan, Htr. low mileage	495	395	135	18
38	Willys Panel Del. 1/2-ton, Orig. finish	595	495	165	18
37	Chev. 1 1/2 Ton Truck, Furniture Van	645	525	175	18
37	Chrysler Royal Sdn., Htr., Good Tires	595	525	175	18
37	Hudson 6 Custm Sdn. Rad. Htr. new tires	575	495	165	18
37	Plymouth Sedan, 4-Speed Transmission	495	200	100	18
37	Pontiac Sedan, Htr. New tires, New Fin	625	545	185	18
37	Studebaker Sdn. O.D. Super Recond.	645	545	185	18
37	Terraplane Sdn. Htr., Orig. Finish	585	495	165	18
37	Oldsmobile 6 Sdn. Htr. Rad. good rub.	645	545	165	18
37	Ford Pickup, good tires, new finish	425	345	115	18
37	Studebaker pk-up, hi. box, hyd. brakes	475	395	135	18
36	Ford Pickup, new tires, stike rack	395	295	100	15
36	Ford Truck, Recond. dual wheels	475	395	135	15
36	International Truck, duals, good tires	595	450	150	15
36	Zephyr Sedan, priced for quick sale	545	445	150	15
36	Plymouth Del. Sdn. Htr. Orig. finish	445	385	130	15
36	Terraplane Custm Sdn. Perfect good tires	395	285	95	15
36	Terraplane Sdn., new tires, orig fin.	435	345	115	15
36	Willys Coupe, Goodrich Super Tires	295	210	70	15
35	Chevrolet 1 1/2 ton truck, new rubber	445	350	120	15
35	Chevrolet 1 1/2 ton truck, dual, good tires	395	325	110	15
35	International Truck, C40 cab and chassis	325	225	75	15
35	International Truck, C40, new tires	425	365	125	15

make a deal. If you do not have the necessary amount of cash on hand, come anyway, as we are ready and willing to help you.

Our new, low CLOSE-OUT FINANCE RATES will be in effect with the beginning of this sale, and so by reading between the lines you should be able to draw your own conclusions as to the purpose of this PUBLIC CLOSE-OUT SALE.

Come early to avoid disappointment. We promise you no delay for deliveries. Select the car of your choice and then back your decision with ACTION and come prepared to buy. Any of our 10 courteous salesman will be glad to assist you while selecting the car of your choice.

This is the greatest opportunity Medford has ever witnessed. You can make a host of friends by telling your friends, and save cold, hard cash by taking advantage of these TREMENDOUS low prices now!

All Spectators are welcomed without the least obligation!
(Signed) AUTO SALES AND LOAN CO.

Year	Description Code and Makes	Stock Price	Public Close Out Sale Price	Dr. Payment Cash or Trade	Instalments Mo's
35	Studebaker Truck, cab and chassis	315	165	82.50	15
35	Stude. truck, duals, Brownie amtdshifts	445	345	115	15
35	Terraplane Cpe. Electric hand, fast car	375	295	100	15
35	Chrysler Sdn., beautiful wine finish	495	395	135	15
35	Graham 5m. Sdn., new rubber, orig. fin	345	235	85	15
34	Stude. 6 Sdn., the reliable car	365	295	95	12
34	Chevrolet 1 1/2 ton, Tandem duals	495	385	135	12
34	Dodge Truck, duals, motor recond.	395	285	100	12
34	Ford 1 1/2 ton truck, produce van	395	345	115	12
34	Ford Pickup, good rubber, priced to sell	295	175	60	12
34	Terraplane Cpe. orig. fin. very cheap	245	145	50	12
33	Ford Truck 1 1/2 ton, duals, wood rack	245	185	65	12
33	Ford Dix. Cpe., tan orig. finish	225	165	65	12
33	Buick Sdn. super recond. new finish	345	265	90	12
32	Dodge Sedan, a popular car	145	45	45	6
31	Studebaker Cpe. leath. upholst. sm. 6	145	85	42.50	6
31	DeVaux Sdn., Continental motor	95	40	25	3
30	Buick Sdn. try it, you'll buy it	125	60	30	3
30	Dodge Sdn. late series, runs fine	145	95	35	3
30	Franklin Sdn. Only one in town	135	45	25	2
30	Graham Sdn. hydraulic brakes, orig. fin.	145	95	35	3
29	Auburn Sdn. Todays best buy	95	45	25	3
29	Chev. Roadster, runs fine	95	40	25	3
29	Ford Sdn. Seat covers, orig. finish	135	85	35	4
29	Hudson Sdn. Custom 4-door	95	50	25	3

This Public Closeout Sale is Strictly a Closeout of Our Entire Stock. Every Car Must Go!
Keep This Ad as Your (Genuine) Public Closeout Sale Guide
Look For Our Banner Street Signs—Then Drive in Our Lot
Open All Day July 4th
Sponsored By AUTO SALES & LOAN CO.
Corner 4th and North Riverside Medford, Ore. Phone 304

MOTORISTS ATTENTION
If your motor heats or radiator leaks, see or call
HOOPER'S
RADIATOR SERVICE
33 S. Bartlett Phone 197

WESTERN THRIFT
Will Be
CLOSED
Thurs., July 4
So Employees May Enjoy A Grand and Glorious Fourth