

Average Mileage for All Drivers Boosted One Mile Per Gallon; Running Time Fastest Yet



23.40 MILES Per GALLON That's DE SOTO'S Fine Economy Record in the GILMORE-YOSEMITE Run



BEFORE YOU BUY--BE SURE TO SEE THE NEW DE SOTO

SIX PASSENGER SEDAN

\$1099

F. O. B. MEDFORD

NEW LOCATION **HUMPHREY MOTORS** 33 SO. RIVERSIDE

Look-Ride-then Decide!

- 1 100 HORSEPOWER ENGINE—Try this brilliant new performance.
- 2 122 1/2" WHEELBASE—Seats, floors, wider. Leg and shoulder room are increased.
- 3 ADVANCED STYLING—Back's as beautiful as the front!
- 4 NEW FLOATING RIDE—Rear axle moved back 7 1/2". Back seat ride now as smooth as front.

Through torrential rains in the valleys and over icy mountain passes, twenty-eight 1940 stock sedans roared to new mileage records in the Gilmore-Yosemite run to establish the combined average of 22.9 miles per gallon of Gilmore Red Lion gasoline in the world's famous stock car mileage classic. Closely supervised by the contest board of the American Automobile association, competing cars are pictured in various phases of the annual performance test. Left to right are: A.A.A. official checks motor of one entry to make sure it is identical to models sold to the general public; winning drivers of the Willys, Nash Ambassador 8, Packard, Studebaker Champion, Studebaker Commander, Mercury, Lincoln Zephyr, Studebaker President, and Nash Lafayette pose with Earl B. Gilmore, president of the Gilmore Oil company; Nash Lafayette on ice-covered mountain grade; three A.A.A. official checks crankcase of Lion Head motor oil in Packard Super 8 at finish line; Willys starts climb into Yosemite park as snow falls.

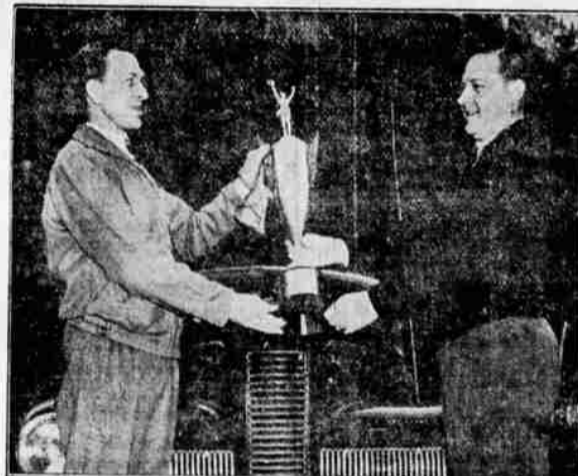
Klamath Pair Sentenced
Walla Walla, Jan. 13.—(AP)—Alfred Crumacker, 24, of Klamath Falls was sentenced to 15 years in the state penitentiary yesterday after he pleaded guilty to second degree burglary. His younger brother, Delbert, 19, was given a 15-year reformatory sentence which was suspended on his promise to return home.

Portland, Jan. 13.—(AP) America needs to take a deep breath and relax, Dr. Fritz Kunkel, noted psychiatrist, said last night.

Erb to Speak
Eugene, Jan. 13.—(AP)—Dr. D. M. Erb, president of the University of Oregon, will be one of several speakers at the annual convention of the Oregon Pacific Highway association here Monday.

Baseball Veteran, 80
Reading, Pa., Jan. 13.—(AP)—Henry (Ted) Larkin, who broke into organized baseball when bases on balls were scored as hits, seven balls entitled a batter to a base and you were "out" on four strikes, celebrated his 80th birthday yesterday.

NASH IS WINNER In Two Divisions of the Grueling GILMORE-YOSEMITE ECONOMY RUN!



Driving the Nash Ambassador Eight to victory in Price Division G of the Gilmore Yosemite Run, J. D. Bowersock (right) receives the handsome first place trophy from Mark Butterworth, Gilmore official. Bowersock averaged 21.43 miles per gallon of Red Lion gasoline in the mountainous mileage test.



Receiving his handsome silver trophy from Herman Alber (left), Andy Henderson driving the Nash Lafayette in the recent Gilmore Yosemite Run won first place in his price division with an average of 23.76 miles per gallon of Red Lion gasoline.

AMBASSADOR EIGHT
FIRST PLACE - G - DIVISION
21.43
MILES PER GALLON

NASH LAFAYETTE
FIRST PLACE - C - DIVISION
23.76
MILES PER GALLON

23.05 Miles Per Gallon - The Economy Record
Of the NASH AMBASSADOR SIX
For Beauty! Speed! Comfort! ECONOMY! - Drive NASH



WALTER W. ABBEY

YOUR NEW
NASH
Is Waiting Now
\$998.00 and up
at Medford
Come on down and see the new wonders we have added to driving.

123 So. Riverside
Telephone 303

"GILMORE IS THE WORLD'S QUICKEST AND BEST"

You get ECONOMY PLUS superior performance when you use these products in YOUR car.

Gilmore Gasoline
Lion Head Motor Oil

Now! Proof of the
ECONOMY
of Gilmore Products!

Check the Mileage Made By the Car YOU Drive in the

GILMORE-YOSEMITE RUN

Buy Gilmore Products From These Centrally Located Independent Dealers

- A. O. TOLLEFSON
ACROSS FROM MEDFORD POSTOFFICE
- RUDY SINGLER
NINTH AND CENTRAL STREETS
- NINE ELLIS
RIVERSIDE AT JACKSON STREET
- RUDY SINGLER
JACKSONVILLE HIGHWAY AT LOZIER LANE

GILMORE