

Walter W. Abbey Opens New Sales and Service Plant In Medford

FORMER LOCATION REMODELED; NASH DISPLAY FEATURE

Walter W. Abbey, local dealer for Nash automobiles and Allis-Chalmers tractors, will open today in his new location at 123 South Riverside avenue, on the Pacific highway. The building, which formerly housed Mr. Abbey's concern, has been completely remodeled and redecorated.



Walter W. Abbey

ated and will be one of Medford's best equipped automobile establishments. The front portion of the building has been devoted to attractive display rooms where the smartly-styled 1940 Nash cars will be shown. Adjoining the showrooms will be offices, parts and service rooms, rest rooms and a large, well-lighted repair and service department. The latest type equipment has been installed for servicing Nash cars and all makes of automobiles. The new location has a floor space of 7,800 square feet, exclusive of the basement. Assisting Walter Abbey in the operation of his new establishment will be Erna Miller as office manager, Harry Glidden, bookkeeper, Dee DeLap, manager of the service and parts department, Preston Davis and Ted Webster. Ed Cook will manage the used car department and have charge of the used car lot which remains in the former location on Ninth street, west of the Firestone

Nash Cars Join Fleet Of Universal Pictures



David Garber, manager of operations for Universal Pictures, Inc., Universal City, officially accepts from Spencer T. Honig, Southern California Nash distributor, the nine new Nash cars, selected after careful study, that make up the Universal Studio official fleet for 1940. These nine Nash cars will be used for the transportation of Universal stars to and from location points in the large studio grounds and to distant location points when the stars are working away from Universal City.

Auto Supply and Service store. Complete Texaco and Associated lubrication service will be especially featured by Walter W. Abbey, according to his announcement Saturday. Several national service accounts will be handled by this Medford firm in addition to the usual volume of local service work, it was stated. A cordial invitation has been extended by Mr. Abbey for the public to visit and inspect his new, completely equipped sales and service plant.

We Extend Congratulations to **WALTER W. ABBEY**

LITRELL PARTS COMPANY
317 EAST MAIN PHONE 327

Congratulations **Walter W. Abbey**

We are proud of our part in

ELECTRICAL WORK

Done in your new location

MEDFORD ELECTRIC

E. E. CUFFEL A. J. WOLF
Basement Medford Bldg.

BEST OF LUCK

To

Walter W. Abbey

In Their New Location

California-Pacific Utilities Co.
YOUR GAS COMPANY
229 W. Main Medford



Why Be a Bear about Winter?

THERE are a lot of men in this world who disappear about October and it isn't until next March that you see them chugging along the road again.

Gentlemen, why be a bear about Winter?

Today—right now—you can step into 17 feet of sunny loveliness that's called a 1940 Nash and thumb your nose at Winter from now on!

The incredible magic begins the moment you twist that "Weather Eye" dial and feel a gust of air so warm and balmy you'd swear you were basking in middle-May!

A hint to your hundred-odd horses, and you're off with the headlong

rush of a skier down the chute . . .

When your Automatic Fourth Speed Forward clicks in, you're skipping the closest thing known to a silent-flying iceboat . . .

And when a laggard disputes your path, a nudge on the throttle gives you "Overtake" power that whips you out and around like a champion Olympic bobsled taking the turns.

Those frozen ruts and bumps . . . why don't you feel them?

You can't—because they never get past your dancing wheels. It's Nash's amazing new Arrow-Flight Ride . . . result of an utterly new springing combination.

Right down to its big Manifold-Sealed

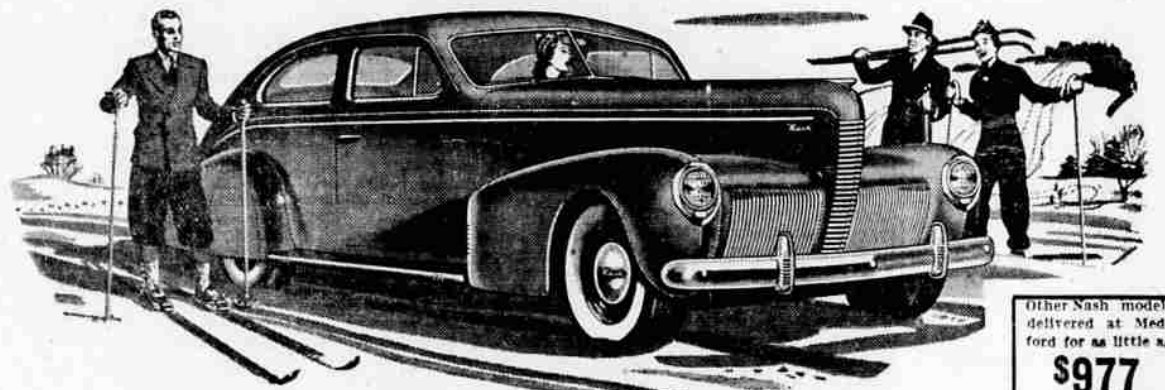
engine . . . that sends you singing on your way while your friends' cars are still coughing and sputtering at the curb . . . you've found a car built to take the headaches out of Winter.

Come on down today and see it. With figures and facts and a surprising automobile X-Ray, we'll prove that inch for inch and pound for pound of sheer, fine steel . . . no car costs so little to own and run.

And we'll explain why . . . with 18 sleek, luxurious, big-car Nashes . . . our prices go right down to a few dollars more than the lowest.

Why not see your Nash dealer—and put an end to this dull Winter now?

You'll be Happier in a NASH



LOW PRICES This new 1940 Deluxe Nash Lafayette sedan costs only \$977, delivered at factory, standard equipment and Federal taxes included. Stern, 1-Pin Gearshift, the new 11-7 Test Safety Glass, Sealed Beam Headlights and Candy cloth upholstery are standard in all models. The Weather Eye Command Air System, Fourth Speed Forward, Foam Sponge Seats, White Sidewall Tires and Wheel-shields are optional extras. 1800 dealers offer nation-wide service.

Other Nash models delivered at Medford for as little as **\$977** Includes Standard Equipment and Federal Taxes

Come In...Get Behind the Wheel—Start Having Fun!

Walter W. Abbey

123 SOUTH RIVERSIDE

PHONE 303

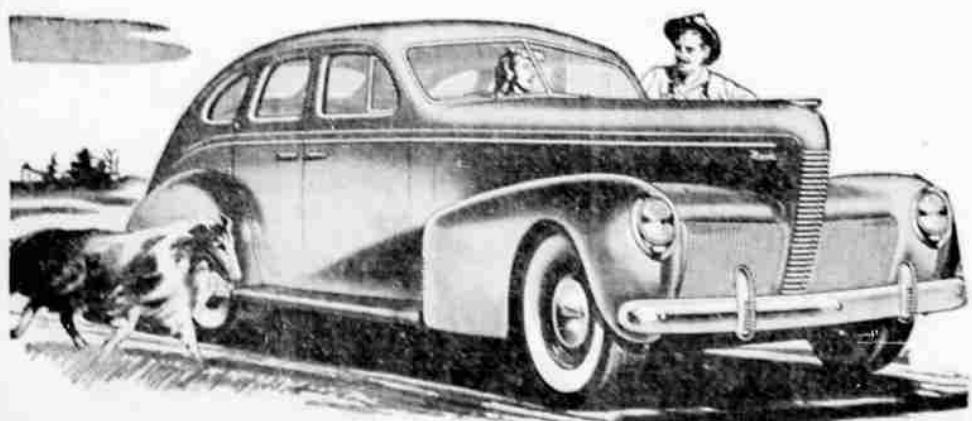
A CORDIAL INVITATION

IS EXTENDED TO SOUTHERN OREGON PEOPLE

To Visit and Inspect Our New Nash Sales and Service Headquarters, Located at

123 SOUTH RIVERSIDE AVENUE

OPEN TODAY With A Showing of New 1940 NASH CARS!



In this new, completely remodeled location we are featuring a brilliant display of smartly-styled NASH cars PLUS southern Oregon's finest equipped service shop. You'll find that we have every facility for complete, dependable service and a long-experienced staff to offer friendly and courteous attention to every automotive need.

ALLIS-CHALMERS TRACTORS

WALTER W. ABBEY

NEW LOCATION — 123 SO. RIVERSIDE — PHONE 303

TO THE PEOPLE OF SOUTHERN OREGON—

It has been my privilege to serve you in the past, and your patronage has been most appreciated. The occasion for this letter is to call to your attention that I have moved to my old location at 123 South Riverside, which I have remodeled to meet the needs of giving you the best of service. We have three excellent mechanics who have been with us for a long time, Mr. Dee DeLap, in charge of the service and parts, Mr. Preston Davis and Mr. Ted Webster, who will take care of your service needs. These boys and myself welcome you to our new shop.

You'll need oil and grease change, and Anti-freeze, soon anyway. We will be pleased to serve you at your convenience. Come in, or just call us at phone 303 and we will be glad to come get your car and deliver it back to you when completed.

Sincerely,

WALTER W. ABBEY