

SANTIAM BARLEY GIVES BIG YIELD IN WEST OREGON

CORVALLIS—(Sp.)—Santiam barley, a new winter variety developed at the Oregon State college experiment station here, produced yields under farming conditions ranging from 40 to as high as 85 bushels per acre in the 1939 season, reports Dr. D. D. Hill, associate agronomist at the station.

Only one weakness in Santiam barley has been noted, and that is that on very rich soils it has a tendency to lodge. On such soils in the Willamette valley the station recommends Utah winter or winter club, which has an unusually stiff straw and will ordinarily yield well.

Utah winter matures about two weeks later than Santiam, which normally will ripen between June 15 and June 25. The Santiam variety tillers or shoots profusely and therefore is best not planted so heavily as the ordinary varieties, says Dr. Hill. A planting rate of from 85 to 100 pounds per acre is satisfactory for most conditions.

One farmer in Linn county last year planted 420 pounds on seven acres and harvested almost six tons from the crop. When planted at a fairly light rate, such as 75 to 90 pounds, Santiam will stand up better and will be easier to harvest.

Both Santiam and Utah winter are sufficiently hardy to withstand any temperatures in western Oregon. Both survived the low temperatures of 1932-33 with no winter killing whatever. They are adapted for use on well-drained land rather than on low

lying, poorly drained soil. Both are excellent nurse crops for clover, although Santiam, because of its earlier maturity, is a little better than Utah winter for this purpose. Winter barley is generally considered superior to all other grains as a nurse crop. Ample seed supplies of Santiam barley are available in most Willamette valley counties. County agents have a record of such seed and can furnish information.

HABEAS CORPUS IS DENIED BERGDOLL

NEW YORK, Sept. 21.—(AP)—Grover Cleveland Bergdoll, the No. 1 world war draft dodger, was denied a writ of habeas corpus in federal court today and ordered back to military prison on Governors island, where he faces a court-martial on charges of desertion and escape.

WAR CORRESPONDENT FLEES INTO RUMANIA

CERNAUTI, Rumania, Sept. 21.—(AP) Richard Mowrer, correspondent for the Chicago Daily News, escaped from the Russian-occupied section of Poland last night by wading the Danester river.

(Mowrer yesterday was reported to have been under arrest by Soviet soldiers at the Polish frontier town of Zaleszczyki.)

Mowrer and William Morton, United States vice-consul in Warsaw, were caught on the Polish side of the river by the Russian occupation.

Bergdoll Back to Prison



Grover Cleveland Bergdoll (center), World war draft dodger, is shown being taken back to prison by Corp. A. J. Amos (right), and Sgt. Robert Farrelly (left), after his court-martial on Governor's Island, New York.

Morton still is in Zaleszczyki, unable to get Russian permission to enter Rumania.

Hurricane "Not Guilty" NEW HAVEN, Conn. (UPI)—Judge John Rufus Booth refused to believe

BOWLING

The Mail Tribune beat Monarch Seed & Feed, 3 to 1, and Rollin' Pin and Littrell Parts each took two points in Commercial league bowling matches at the Medford alleys last night. The McDonald Candy company-Piche Sports match was postponed to a later date. Scores follow:

Rollin' Pin.	59	59	59	177
Dickinson	146	156	165	467
Strode	102	125	124	351
Shreeve	111	113	133	379
Vukovitch	115	109	113	337
Scoville	149	209	137	495
				662 771 753 2207
				Littrell Parts.
Sims	134	132	163	429

Swearingin	121	128	110	359
Weisenburger	142	150	184	476
F. Green	149	168	196	513
Overmyer	129	132	167	428
				678 720 890 2215
				Mail Tribune.
Murray	136	168	151	455
Greene	116	138	87	341
Kraws	144	106	146	396
Latham	171	122	135	428
Hagen	149	161	169	479
				726 697 698 2111
				Monarch Seed & Feed.
Wilkinson	136	123	175	434
Antle	146	145	126	417
Webster	113	132	150	395
Mikschke	122	118	156	396
Ryan	141	127	138	406
				660 645 748 2053

Scores Yesterday

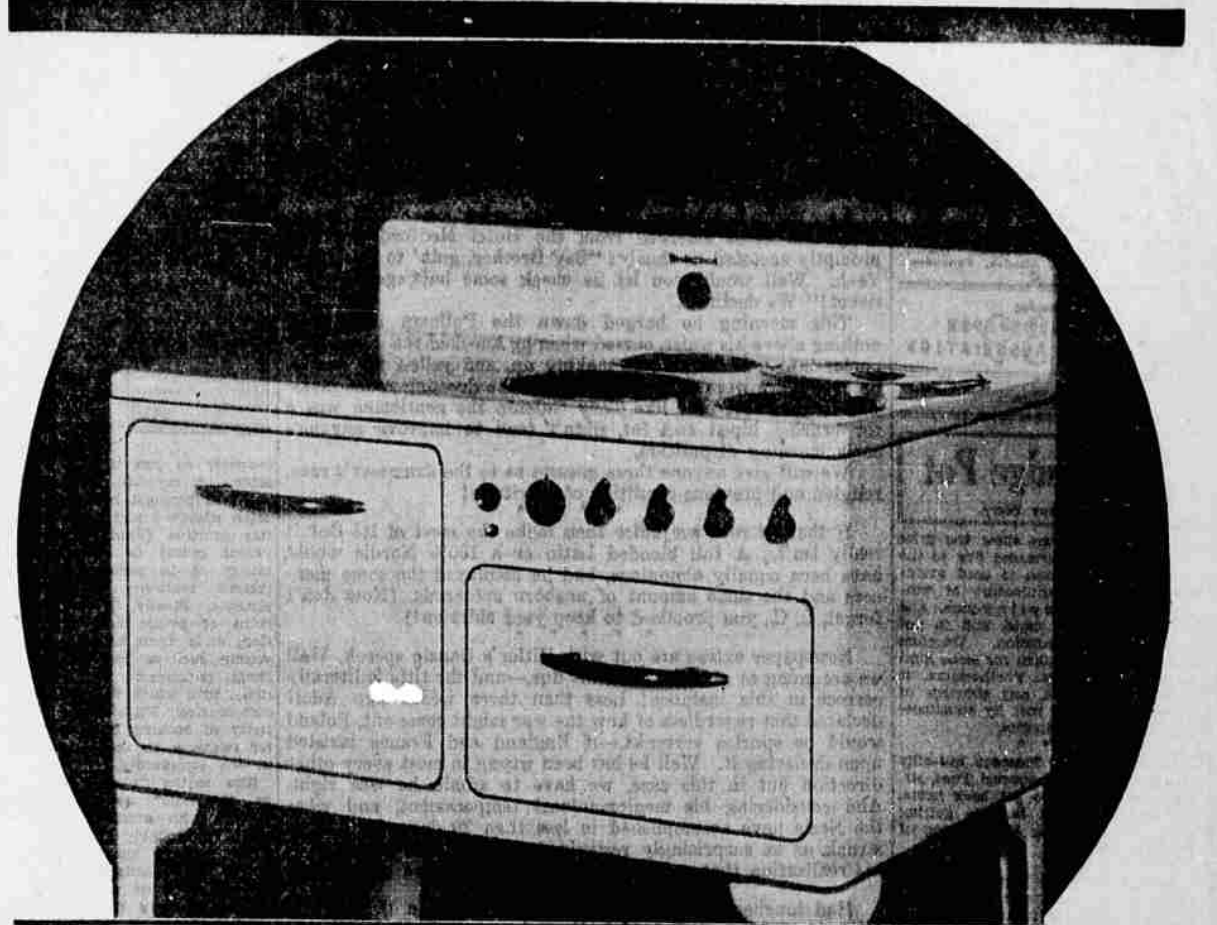
American League	
St. Louis 11, Boston 8 (16 innings).	
Philadelphia 5, Detroit 4 (13 innings).	
New York 8, Chicago 4.	
Cleveland 7, Washington 2.	
National League	
New York 4, Chicago 2.	
St. Louis 10, Brooklyn 4.	
Cincinnati 3, Philadelphia 2.	
Boston at Pittsburgh, rain.	
Post League (Playoffs)	
Seattle 5, Los Angeles 1.	
Sacramento 5, San Francisco 4.	

of Mayor Charles B. Muford that street lights be turned off as an economy measure. The mayor had made the proposal because of the town's financial difficulties.

Closing time for Too Late to Classify Ads is 1:30 p. m.

FALSE TEETH THAT LOOSEN

NEED NOT EMBARRASS Many wearers of false teeth have suffered real embarrassment because their plates dropped, slipped or wobbled at just the wrong time. Do not live in fear of this happening to you. Just sprinkle a little FASTEETH, the alkaline (non-acid) denture powder on your plate. It's a real aid to thousands in holding such plates more firmly in place so that they feel more comfortable. FASTEETH checks bad "plate odor" (denture breath), because it's alkaline. Get FASTEETH at any drug store.



GIVES *Cooking* NEW THRILL!

NOW SEE THIS NEW "CONQUEROR"

"Kitchen-Proved" **ELECTRIC RANGE**
WESTINGHOUSE Quality THROUGHOUT

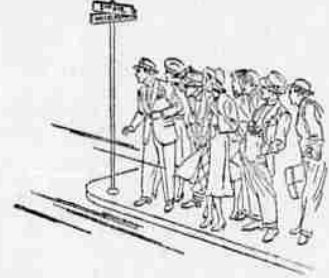
Sensational Value \$79.50
Convenient family-budget terms, too!
Only \$5.00 down, \$2.38 a month!
Cooker extra.

You can count on BETTER COOKING RESULTS with this new, improved, more-beautiful-than-ever CONQUEROR—And what a value it is at this special low price. The CONQUEROR is thrifty in operating cost, too! You can afford RIGHT NOW to enjoy clean, safe, economical ELECTRIC COOKING with this handsome, sturdy Westinghouse "Kitchen-Proved" CONQUEROR!

ON DISPLAY AT
COPCO
AND THE FOLLOWING DEALERS

- YREKA, CALIFORNIA**
Burbank Electric Store
Yreka Radio & Electric Shop
Electric Supply Co.
Cooley & Pollard
Scrammell's Electric Shop
Yreka Appliance Store
- MT. SHASTA, CALIFORNIA**
Schuler's Department Store
Mt. Shasta Hardware Co.
Neuffer Electric Shop
Solari & Girimonte
- DUNSMUIR, CALIFORNIA**
Shasta Electric & Plumbing Co.
- Siskiyou Appliance Co.
Muellers
- KLAMATH FALLS, OREGON**
G. C. Matley
Eastside Electric Co.
Uhlig's Electric Store
Roberts & Peak Hardware Co.
Tulelake Electric Co.
Tulelake, California
- MEDFORD, OREGON**
Trowbridge & Flynn Electric Co.
Leonard Electric Company
Flynn Electric Service
Feldman Electric Store
- GRANTS PASS, OREGON**
Austin's Hardware
Walt's Radio Service
Brownell's Electric Store
Rogue River Hardware Co.
- ROSEBURG, OREGON**
Roseburg Electric
Radio-Music Shop
Farm Bureau Co-operative Ex.
Josse Furniture Co.
Judd's Furniture Store

ELECTRIC COOKING
COSTS ONLY 1/2 THAT MUCH



The Fun Begins an Hour From Now

THROW down your newspaper, turn off your radio—get your family and grab your hat!

Down on the streets right now is the bright and beaming face of a 1940 Nash. And just looking at it will make you feel good all over!

One sweet sweep of glittering line, it looks gay as a Mardi Gras—and twice as exciting.

But don't waste time staring. You belong in the driver's seat. For that's where the fun begins.

Before you start, turn on the Weather Eye to the comfort you want. (It offers new conditioned air wonders this year.)

Just a nudge of your toe, and in one split-second you'll get a good idea of what a hundred-odd stampeding horses can do. Three finger flicks—and the gears are shifted. Then—a lift, a rush, a click—and a new Fourth Speed Forward lends soft wings to your ride.

Don't worry about that Sunday driver ahead. There's something new in the throttle—the Nash Automatic Overtake. Just press your toe—and leave him dawdling in your dust, wondering where you came from—or where you went.

Then head for a backwoods road where the others dare not follow... and feel what happens.

Ruts and bumps rush up to meet your spinning wheels, but—they never seem to reach you. Your hands stay idle on the wheel.

It's riding magic, pure and simple. A ride so smooth, so level, so silent that you might be in your easy chair at home, or sleeping in the Nash convertible bed.

It's the new Arrow-Flight Ride... result of an entirely new springing combination... and we dare you to say you've ever experienced anything like it, or known steering that was so sure and effortless.

With singing heart, you give the throttle another nudge. From where you're sitting, the world looks like one straight, unending ribbon of road ahead... in a land of perpetual spring.

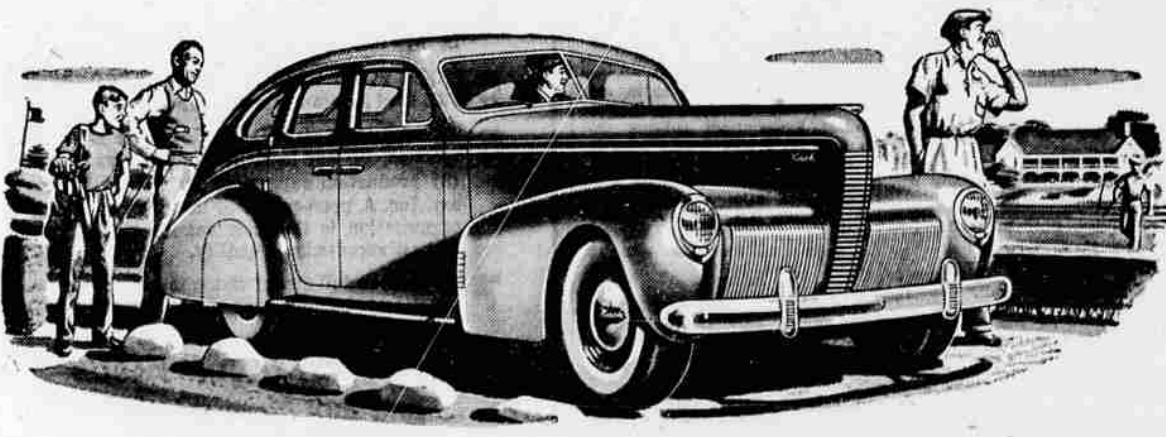
It is—and always will be, in your Nash... long after other cars are parked for good.

We're asking you, with nothing but your own preferences, experiences, and instincts, to get behind the wheel of a 1940 Nash. For ten glorious minutes—that's all.

Then decide if any other car today... of any power, weight, or wheelbase... can give you as much downright fun as this new, lower-priced Nash!

Get your hands on it now—for you'll regret every minute you don't own one! Your Nash dealer is waiting. Come on—it's getting late—let's go!

Again...it's that new NASH



NEW LOWER PRICES This 1940 Deluxe Nash LaFayette Sedan costs only \$875.00, delivered at factory, standard equipment and Federal taxes included. Steering-Post Gearshift, the new Hi-Test Glass, Sealed Beam Headlights, and Candy Cloth Upholstery are standard on all models. The Weather Eye conditioned air system, Fourth Speed Forward, White Sidewall Tires and Rear Wheel-shields are optional extras. 1800 dealers offer nation-wide service.

Nash Prices begin as low as

\$977

DELIVERED IN MEDFORD

Includes Standard Equipment and Federal Taxes

Why Don't You Trade Now?

Now On Display—See It Today and Drive It!

Walter W. Abbey Inc.

9th and Bartlett. Telephone 303