

CANADA SUMMONS TRAINED AIRMEN FOR DUTY IN WAR

Dominion Also Launches Organization of Volunteer Expeditionary Force of 32,000—To Double Navy

OTTAWA, Sept. 20.—(Canadian Press)—Canada summoned trained fliers today for immediate overseas duty and launched organization of a volunteer expeditionary force of 32,000 men to be available in event they are needed in the European war.

At the same time the government ordered doubling of the naval personnel and construction of "a large number of anti-submarine craft" as additional measures of cooperation with Britain.

The defense ministry said the expeditionary force would consist of two war strength divisions of 16,000 men each.

They will be recruited by volunteers from the 50,000 men now under arms in Canada, the ministry explained. It was expected the first division would be ready for overseas service early in the new year.

Announcement of plans for expansion of the dominion's naval forces disclosed Canada has been cooperating with the British navy in defense of Canadian ports and in convoy work off the coast.

While Canada stepped up its war preparations, a naval dockyard commander in Halifax, N. S., issued a statement saying "fairly reliable reports indicated that a submarine may have been operating off the Nova Scotia coast."

A Canadian destroyer engaged in a search for the suspected submarine, the commander said, and dropped a depth bomb "in a suspicious area." The effect was not known.

The government said it anticipated

civilian pilots would cooperate with the Royal Canadian air force in meeting immediate demands for trained fliers abroad.

Livestock

Portland, Ore., Sept. 20.—(AP-USA)—Hogs 400; market uneven; opened steady; later sales 15c lower; choice 165-215 lb. drivens mostly \$7.85; early, \$8.00; 225-265 lb. butchers, \$7.25-8.00; light hogs mostly \$7.35; packing sows steady at \$6.00-6.25; light weights to \$6.75; feeder pigs scarce; choice lightweight quotable \$8.90 or above.

CATTLE 225; calves 35; market uneven; bulls and cull cows active; fairly steady; some bulls 15-25c higher; fat dairy type cows and cutter-common dairy type heifers weak to 25c or more lower; some unsold; other classes about steady; scattered lots grass steers, \$6.50-7.50; cutter dairy steers, \$5.50; common-medium heifers, \$5.50-7.00; cutters, \$4.50; common-medium cows, \$3.75-4.50; canners, \$3.25; few fat dairy type cows, \$5.00; some held higher; fairly good beef cows, \$5.75-6.25; bulls mostly \$5.75-6.50; few \$6.65-7.5; few good-choice vealers, \$9; strictly choice quotable \$9.50; good-choice 350 lb. calves \$7.75-8.90.

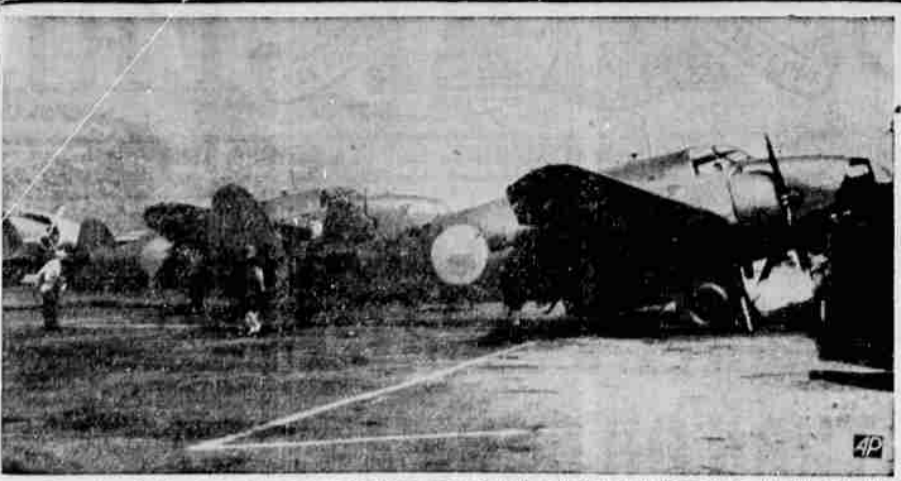
SHEEP: 300; market steady; good-choice lambs, \$8.00-10; 81-lb. shorn lambs, \$7.50; few medium-good wool-eds, \$7.25; feeders, \$6.00-5.50; fat ewes, \$3.00; common-medium ewes, \$1.00-2.00.

South San Francisco SOUTH SAN FRANCISCO, Sept. 20.—(AP-USA)—Hogs salable 250; butchers 10c to mostly 15c lower; top and bulk 170-200 lb. butchers, \$8.65; packing sows about steady; load medium to good 300 lb. sows, \$5.30; heavy sows down to \$5.00.

CATTLE: salable 150; steers weak to 15c lower than Monday; two loads medium to good 1150-1200 lb. short-fed steers, \$8.00; she stock fully steady; common to medium heifers, \$5.50-7.00; range cows, \$5.50-6.00; canners and cutters, \$4-5; few dairy cows, \$3.20; bulls quoted \$5.75 down; calves 10, nominal, steady; few common to choice vealers and light calves, \$6.00-9.50.

SHEEP: Salable 800; early trade steady; small lots good to choice woolled lambs, \$9.25; deck good 73-

Neutrality Grounds British War Birds



These two Lockheed bombing planes (Hudson type), for Britain's Royal Air Force were completed too late for shipment abroad before the United States arms embargo became effective under the Neutrality Act. However, the camouflaged ships, bearing the Royal Air Force insignia, are shown at Burbank, Calif., being prepared for test flights. (AP Photo by Air Mail to Mail Tribune)

lb. woolled lambs, \$9.25, sorted 15 per cent; deck good to choice 80-lb. medium pelted clover pasture lambs, \$8.50; older classes steady; few yearlings, \$6.00; good medium pelt slaughter ewes, \$3.50.

turkeys, potatoes, onions, steady, unchanged.

CHICAGO, Sept. 20.—(AP-USA)—Salable hogs 13,000; mostly 10c lower than Tuesday's average; good to choice 180-270 lb., \$7.80-8.10; top, \$8.10; light smooth butcher sows up to \$7.50; bulk good 300-500 lb. sows, \$6.50-7.25.

Salable cattle 13,000; salable calves 1000; weighty bullocks, 25-50c under Tuesday's average market; yearlings and light steers, weak to 25c lower; common and medium grades, 25c off; cows showing this decline, strictly choice 1300 lb. fed steers, \$11; light heifers reached \$11.00, most stockers in broadest demand.

Salable sheep 3000; slow trade on native and western spring lambs and yearlings; undertone lower; sorted native lambs around 25c lower at \$9.50; most other natives bid \$9.50 down; few slaughter ewes, \$3.00-7.5.

Portland Wheat

PORTLAND, Ore., Sept. 20.—(AP)—Grain: Wheat: Open High Low Close Sept. 81 81 81 81 1/2 Dec. 82 1/2 83 82 1/2 83

Cash grain: Oats, No. 2 35-lb. white, \$23.75; Barley, No. 2, 45-lb. b.w., \$23.75; Corn, No. 2 ey., shipment, \$26. No. 1 flax, \$1.79. Cash wheat (bid): Soft white, 80 1/2; western white, 80; western red, 79. Hard red winter, ordinary, 78; 11 per cent, 79; 12 per cent, 81; 13 per cent, 83; 14 per cent, 85. Hard white-bant, ordinary un-quoted; 12 per cent, 80; 13 per cent, 89; 14 per cent, 92.

Today's car receipts: Wheat, 9; barley, 2; flour, 19; corn, 4; oats, 1; millfeed, 9.

Chicago Wheat

CHICAGO, Sept. 20.—(AP)—Loosening most of early gains amounting to as much as 3 cents a bushel or more, wheat prices today closed near the session's low point, which was only fractionally higher than final prices yesterday.

Wheat: Open High Low Close Sept. 87 87 84 1/2 84 1/2 Dec. 87 1/2 87 1/2 84 1/2 85 1/2 May 89 1/2 89 1/2 86 1/2 86 1/2

Portland Produce

PORTLAND, Sept. 20.—(AP)—Butter—Prints, A grade, 33c lb. in parchment wrappers, 34c in cartons; B grade, 32c lb. in parchment wrappers, 33c lb. in cartons. BUTTERFAT—First quality maximum of 8 of 1 per cent acidity, delivered Portland, 30-30 1/2 lb. valley routes and country points, 2c less to 2 1/2c premium quality maximum of 35 of 1 per cent acidity; second quality 2c less than first quality. EGGS—Buying price: Extra large 28c standard, large, 19c, extras, medium, 21c; standards, medium, 18c; extras, small, 12c; standards, small, 11c. Cheese, country meats, live poultry.

Wall St. Report

NEW YORK, Sept. 20.—(AP)—The speculative play in war stocks thinned out today after many had approached the recent peaks on an early push forward.

Gains, ranging from 1 to 4 in leading issues around the start, were reduced to fractions or eliminated entirely in some cases, a few held advances of more than a point.

Brokers said many traders took advantage of the rally, begun after Hitler's Danzig speech yesterday, to cash profits while they retired to the sidelines to await the impending fight over neutrality in congress.

Boardrooms tuned down talk of a "peace offensive" after studying the French and British answers to the Hitler speech. Meanwhile, evidence of a strong business upswing in the United States was plentiful in the trade news, including reports of capacity steel operations at some mills. Transactions approximated 2,250,000 shares.

Today's closing prices for 32 selected stocks follow:

Al. Chem. & Dye	194
Am. Can.	110 1/4
Am. & Pgn. Pow.	2 1/2
A. T. & T.	160 1/2
Anacosta	34
Atch. T. & S. F.	30 1/2
Bendix Avia.	29 1/2
Beth. Steel	22 1/2
Caterpillar Tract.	59 1/2
Chrysler	87 1/2
Coml. Solv.	14 1/2
Curtiss-Wright	7 1/2
Du Pont	178 1/2
Gen. Elec.	41 1/2
Gen. Foods	40 1/2
Gen. Mot.	84
Int. Harvst.	68 1/2
E. T. & T.	79
Johns-Man.	79
Monty Ward	54 1/2
North Amer.	22 1/2
Penney (J. C.)	86 1/2
Phillips Pet	45 1/2
Radio	6
Sou. Pac.	10 1/2
Sid. Brands	8 1/2
St. Oil Cal.	30 1/2
St. Oil N. J.	51 1/2
Trans. Amer.	9 1/2
Union Carb.	91
Unit. Alvertat	44 1/2
U. S. Steel	77 1/2

San Francisco Butter

SAN FRANCISCO, Sept. 20.—(AP-USA)—Butter unchanged.

SACRAMENTO, Sept. 20.—(AP)—

Churning cream butterfat: First grade, 34 1/2; second grade, 32 1/2.

Hotel San Pablo
400 BAY STREET
OAKLAND CALIF.

Down Town Central

Completely Renovated and Redecorated

With detached bath from \$1.50 daily With Bath from \$2.00 daily

GARAGE IN CONNECTION NEW MODERN COFFEE SHOP

Come to the Fair STAY AT THE SAN PABLO

Very Convenient to Bus and Rail Transportation to TREASURE ISLAND

Cordially Yours

- Convenient Location
- Coffee Shop—Buffet Tavern
- Dining and Banquet Rooms
- Famously Fine Food
- Modern Apartments
- Garage Opposite

500 ROOMS

MULTIMAN
PORTLAND, OREGON

RUSSIA CALLS UP MORE RESERVISTS FOR POLISH DUTY

Undisclosed Number Going to Some Sector on West Front—Soviet, German Officers Confer on Split

MOSCOW, Sept. 20.—(AP)—Soviet Russia has reported authoritatively today to have called up more army reservists, although the number was not disclosed.

Unofficial sources intimated they were sent to some sector of the western frontier, beyond which red army forces were officially announced as having occupied the industrial city of Lwow in the southeast Polish Ukraine.

At the same time Soviet and German officers started conferences arising from their joint military occupation of Poland.

(German communiques for several days had said that German troops had penetrated to Lwow outskirts on three sides of the city. Lwow is in southeastern Poland.)

The same war communique which told of entry of Soviet Russian troops into Lwow also said Russians had captured Wilno (Vilna) in northeast

Poland, near the Lithuanian border, after a "two-hour battle."
Four German officers arrived yesterday to assist the German military attaché in Moscow, Lieutnants General Ernst Koenigstein, in discussions with the Russians. It was rumored the Soviet military attaché in Berlin, who also holds a general's rank, came here for the talks.

British and French embassies, meanwhile, expected to learn from Prime Minister Chamberlain's statement in the house of commons today whether they would leave Moscow. The Polish diplomatic mission is leaving tomorrow for Rumania.

It was learned Rumania had switched ambassadors in Moscow, in what was interpreted unofficially as meaning Rumania seeks to improve her relations with the Soviet.

Pear Markets Yesterday

CHICAGO, Sept. 19.—(AP-USA)—Pears: 2 California, 2 Oregon, 1 Washington arrived, 13 on track, Oregon Bartlett's 1440 fancy \$2.25-65, average \$2.45.

NEW YORK, Sept. 19.—(AP-USA)—Pears: 25 arrived, 14 California, 21 Oregon, 1 Washington unloaded, 24 on track, Oregon Bartlett's 745 extra fancy, \$2.45-30, average \$2.45, 1373 fancy, \$2.25-50, average \$2.15, Anjoua fancy, \$2.25-50, average \$2.15, average \$2.09, 370 fancy, \$1.75-85, average \$1.85, Bosc, 445 extra fancy, \$1.85-1.95, average \$1.91, 280 fancy, \$1.80-95, average \$1.85.

Tuna Bring \$102.50.

ASTORIA, Ore., Sept. 20.—(AP)—Tuna fishermen who struck at the

outset of the season for more than \$90 a ton, received \$102.50 yesterday from the Theodore Foss, a clipper acting as receiving station for California packers. Other buyers continued to pay \$100.

FLY UNITED'S MAINLINERS

PORTLAND
1 hr. 26 min.

SAN FRANCISCO
2 hrs. 23 min.

LOS ANGELES
4 hrs. 34 min.

Also fine, fast Mainliner sleeper service to Chicago, New York and East! Call travel agents, hotels.

UNITED AIR LINES
Municipal Airport Tel. 241

PREWAY
AMERICA'S FINEST
Oil Burning HEATER

Built With These Five Exclusive FEATURES

- New Streamlined combustion chamber
- Thermostatic Built-in Draft Control
- Triple Heating Surface
- Cross Flow Circulation
- Ra-dial Control

CIRCULATORS Combination Radiant & Circulators Radiant Heaters

DeLuxe 10-INCH BURNERS
For Heating Requirements up to 9,000 cu. ft.
For Only \$79.50
Liberal Trade-In Allowance
Come In And See These Stoves

Hubbard Bros., Inc.
Main and Riverside Phone 231

Hotel San Pablo
400 BAY STREET
OAKLAND CALIF.

Down Town Central

Completely Renovated and Redecorated

With detached bath from \$1.50 daily With Bath from \$2.00 daily

GARAGE IN CONNECTION NEW MODERN COFFEE SHOP

Come to the Fair STAY AT THE SAN PABLO

Very Convenient to Bus and Rail Transportation to TREASURE ISLAND

BIG NEWS FOR BABY
in Wards Semi-Annual SALE
for Infants and Tots!

Save up to 30%

44c SALE!

Blanket 98c
Baby Pink or Blue
Warm, stay-fluffy, imported cotton. 36x50 size, with 3 rayon satin ends, stitched sides.

Infant Dress 98c
Hand-made, hand-embroidered cotton batiste dress. 6 mo.-1 yr.

Sweater Coats 79c
Pink, blue, white
Warm, all wool button-ons that slip on without hair pulling. Hand embroidered. Infants.

Kiddies' Rayon Panties 19c

Sale! 10c Training Pants 8c

Wards Long Hose 15c

Infants' Gown or Wrapper 25c
Warm, full-cut open-front cotton flannel wrapper. Warm, open-front-or-back flannel gowns.

Sale! 49c Diapers 27x27 in. 6 for 44c
Soft, absorbent cotton birdseye or flannellette...

Infants' Cotton Vests 25c

Double Rolled Top Anklets 10c

Kiddies' Cotton Creepers 25c
Tubfast cottons, all with jiffy-change, button-on crotch. Many with hand-embroidered trims.

Sale! 15c Rubber Pants 2 for 25c
Dressier, rayon covered gum rubber with ventilated sides. Elastic waist and leg openings.

Elastic ribbed knits that hug little chests smoothly and warmly. Long sleeves.

Soft, lustrous, mercerized cottons that hold their shape. Reinforced. White 4-6 1/2.

Extra absorbent (double crotch) Extra comfy (elastic waist band) Combed cotton.

Value! Smooth-fitting, plain knit! Reinforced at points of strain. Tea rose only. 4-14.

MONTGOMERY WARD
Enjoy the things you want today... pay in convenient monthly installments on Wards Payment Plan. Any \$10 purchase opens an account.
Buy all your needs at Wards. Our Catalog Order Service brings you thousands of items that we have not room to stock in our store!

117 SO. CENTRAL TELEPHONE 286

Great BOTTLED-IN-BOND Values

EMBASSY CLUB
STRAIGHT BOURBON WHISKY
BOTTLED IN BOND
Every drop rich, mellow bourbon, matured by time to smooth perfection under government bond.

PHILADELPHIA
STRAIGHT RYE WHISKY
BOTTLED IN BOND
Famous Since 1894
A choice Pennsylvania bonded rye whisky of a superior quality at a reasonable price.

EMBASSY CLUB \$2.25 FULL QUART 100 PROOF
PHILADELPHIA \$2.25 FULL QUART 100 PROOF

CONTINENTAL DISTILLING CORPORATION PHILADELPHIA, PA.