

ASHLAND FESTIVAL MAY RECEIVE WIDE PUBLICITY BACKING

City Council and Chamber of Commerce Study Plan for \$1500 Expenditure in Eleven Western States

ASHLAND, Dec. 9.—(Sp.)—A year-round advertising and publicity campaign for Ashland and the Shakespearean festival, as outlined and proposed by Gordon E. Claycomb, formerly of this city and now an advertising counsel in San Francisco, was studied and approved yesterday by the joint advertising committee of the Ashland chamber of commerce and the city of Ashland.

A special session of the city council will be held tonight, when the council will be asked to accept or reject the proposal, which will involve a total of \$1500 for the advertising and publicity campaign.

This very unusual plan, as very few small cities conduct advertising and publicity campaigns with such widespread possible scope as proposed, would be national, but primarily devoted to the 11 western states, from which originate the vast majority of the tourists in this state. In addition to boosting attendance at the Shakespearean festival, which is naturally the main publicity appeal, health facilities, famous mineral water and mineral water baths would also be emphasized, as well as the many scenic attractions in this area.

The plan is for the city advertising fund, which is \$1,000 a year, to be used to the extent of \$1,000; \$250 of the 1937 fund was set aside to publicize the Shakespearean plays at the San Francisco fair, which have been dropped, and \$250 for the same purpose from the 1938 budget. This would be diverted to the year-round advertising campaign, as well as \$500 from the \$1,000 already budgeted for 1939, with the balance of \$500 raised in some other way, probably through benefit shows by the SOU's year-players or through contributions from local business firms who would benefit most directly from an increase in tourist business.

A few of the principal points covered by the proposed campaign would include:

Magazine articles on Ashland and the festival.

Pictorial publications' layouts of pictures.

Radio, dress rehearsal of festival.

Newspapers, news and feature stories.

Advertisements, persuading railroads, airlines, bus and oil companies to feature Ashland and festival in their advertising campaigns.

ASHLAND IN NEED OF STREET REPAIR

ASHLAND, Dec. 9.—(Sp.)—It will cost \$10,545 to put Ashland's streets in satisfactory riding condition and to bring them up to standard against depreciation, it was revealed in a report of a survey by the state highway department.

The report indicated that 19.55 per cent of Ashland's streets were in poor or below average condition, and the figure given is only the cost of bringing the streets up to a satisfactory condition. It does not include any street widening, surfacing or graded unpaved streets or grading dedicated streets not yet opened to travel.

HOPKINS TO ASK MONEY FOR WPA

WASHINGTON, Dec. 9.—(AP)—Harry L. Hopkins, works progress administrator, said today that he would ask congress for a deficiency appropriation to finance work relief from March 1 to July 2.

Hopkins estimated WPA rolls would be reduced from now on about 150,000 a month through his policy of not replacing persons absorbed by private industry.

Menus of the Day

(By Mrs. Alexander George)
Roast Chicken for Sunday
 Dinner Menu
 (Six portions)
 Chilled Tomato Juice
 Roast Chicken, Potato Stuffing
 Canned Sweet Potatoes
 Cranberry Relish
 Creamed Turnips
 Bread
 Currant Jam
 Head Lettuce
 Relish Dressing
 Steamed Pudding
 Lemon Sauce
 Coffee

Potato Stuffing for Five-Pound Fowl
 2 cups hot, seasoned mashed potatoes
 2 cups soft butter crumbs
 4 tablespoons onion, melted
 1 egg, beaten
 2 tablespoons hot cream
 1/4 teaspoon salt
 1/4 teaspoon minced parsley
 1/4 teaspoon celery salt
 1/4 teaspoon white pepper
 Lightly mix ingredients with long-handled slotted spoon or a fork. Stuff the fowl.

Cranberry Relish (Cooked)
 8 cups cranberries
 1 cup water
 2 cups granulated sugar
 2/3 cup vinegar
 2 teaspoons cinnamon
 1 teaspoon cloves
 2/3 teaspoon salt
 Cook berries and water together for four minutes. Mash well and add rest of ingredients. Let simmer for 10 minutes or until thick. Pour into sterilized jars and seal when cold.

Steamed Pudding
 1/4 cup fat
 1 cup granulated sugar
 2 eggs, beaten
 1/4 cup milk
 1 teaspoon vanilla
 3/4 cups flour
 3 teaspoons baking powder
 1 cup chopped dates
 1 cup chopped raisins
 1/4 cup chopped candied fruit peel
 1/2 cup broken nuts (optional)
 1/4 cup chopped citron
 1/4 teaspoon cinnamon
 1/2 teaspoon cloves
 1/3 teaspoon salt
 Cream fat and sugar together. Add the rest of the ingredients and mix well. Half-fill a greased mold. Cover tightly and let steam three hours. Serve hot.

Sweet milk scoured with lemon juice may be used as buttermilk in baking soda recipes. Place one and a half tablespoonsful of lemon juice in a measuring cup. Fill with fresh, sweet milk.

DRIVE ON HOPPERS PLANNED IN WEST

WASHINGTON, Dec. 9.—The Interior department announced today it would supply the manpower and equipment for a concerted drive next spring to rid the public range of the west of millions of forage-destroying crickets.

R. H. Rutledge, director of the division of grazing, said civilian conservation corps forces under his jurisdiction would be used in the eradication program.

The work, he said, would be centered largely in Nevada, Oregon, Idaho, Utah, Washington, Montana, Wyoming, North and South Dakota and Nebraska, where scientists estimate the pests have infested at least 18,000,000 acres of land.

Rutledge said details of the eradication work would be worked out at meetings of state and government officials within the next few weeks.

S. P. Salary Checks On Ill-Fated Plane

EUGENE, Dec. 9.—(AP)—One hundred Southern Pacific Railroad company salary checks, valued at \$7028 and cashed at a Eugene bank by employees, were lost in the crash of the United Airlines plane at Point Reyes, Calif.

It will be necessary for the bank to send photostatic copies of the checks to San Francisco to obtain payment. Bank officials said all checks were photographed after being cashed.

SONS GLEE CLUBS IN YULE VESPERS SUNDAY AT 4 P. M.

SOUTHERN OREGON STATE NORMAL SCHOOL, Ashland, Dec. 9.—(Sp.)—The Christmas vesper song service, presented annually by the combined glee clubs of the Southern Oregon State Normal school, is to be given for the pleasure of the public on Sunday, December 11, at 4:00 p.m. in the normal school auditorium. Presenting carols from many lands, quartet, trio and group singing, the program includes:

Polish Carols:
 "Amid the Silence of the Starlit Night" Arr. by Leszniewski
 S.O.N.S. Choir
 "When the Savior Christ was Born" By Women's Quartet
 "Sleep Thou, My Jewel" Double Trio

Basque Carol:
 "Carol of the Flowers" Men's Glee Club
 Bennett Lofgren, Ralph Lamb, Byer Putman, Jess Barton.
 German:
 "White Shepherds Watched Their Flocks by Night" Praetorius
 "Lo, How a Rose E'er Blooming" 15th Century Melody. Harm. by Praetorius
 Treble Clef Club

French:
 "The Sleep of the Child Jesus" Arr. by Gavaert
 S. O. N. S. Choir
 "Joseph and the Shepherds" Arr. by Harvey Gaul
 Women's Quartet

English:
 "The Babe in Bethlehem's Manger" Arr. by Harold Geer
 "The Coventry Carol" Arr. by Harold Geer
 Treble Clef Club

German:
 "O Jesu So Sweet" (From Scheidt's Tabaturbuch, 1650) Double Trio
 "Chorale" Harm. by J. S. Bach
 S. O. N. S. Choir
 "Silent Night" Gruber
 Louise Woodruff, director.

FORD M'CORMICK MINERS' OFFICER

PORTLAND, Dec. 9.—(Sp.)—W. H. Strayer of Baker, member of the state board of geology and mineral industries, agreed with several other speakers at the newly organized Oregon Mining association today that strict enforcement of the anti-stream pollution law would put all mines and a third of the irrigated farms out of business.

"If the law is not strictly enforced," he added, "it should be abolished."

The organization named Leverett Davis of Cornucopia, president; D. Ford McCormick of Medford, vice-president, and F. Whalley Watson of Portland, secretary-treasurer.

Davis said the association's purpose would be to protect the interests of mines and mining operators and combat unfavorable legislation.

Last year the road did not purchase any new rails. In 1936 it bought 70,000 tons.

WINDOW GLASS—We sell window glass and will replace your broken windows reasonably. Thowrtage Cabinet Works.

Yes Ma'am! These are Real buys



MEATS

- Pork Sausage lb. 12 1/2c
- Hamburger . . . lb. 10c
Fresh Ground
- Veal Steak . . . lb. 15c
Shoulder Cuts
- Sliced Ham . . . ea. 5c
Swift's Premium
- Beef Pot Roast lb. 12 1/2c
- Cottage Cheese pt. 11c
- Lg. Fresh Oysters pt 23c
- Sliced Bacon . . lb. 25c
- Derind Bacon . . lb. 35c
- Bacon Squares lb. 19c
- Fresh Pork Liver lb. 9 1/2c

PRODUCE

- Oranges . . 3 doz. 29c
New Navels
1/2 Case 89c - Case \$1.89
- Grapefruit . 4 for 19c
Arizona Sunkist, large size
Dozen 55c
- Carrots
- Beets
- Turnips 3 bun. 10c
- Apples . . 10 lbs. 25c
Newtowns for Cooking
- Onions 10 lb. bag 19c
Local Boilers
- Lemons . . dozen 19c
Large Sunkist



Prices Effective Saturday and Monday, Dec. 10 and 11, in Medford and Central Point.

Calumet 2 1/2 lb. tin 39c

The better baking powder.

Beans . 10 lbs. 39c

California Red, California Small White, Idaho Great Northern.

Prunes . 6 lbs. 25c

Large Italian.

Milk . . . 4 cans 25c

Maximum tall cans.

- GRAPE JUICE 19c
Kerr's Pint Bottles
- BOILED CIDER 19c
For Holiday Baking Pts.
- DEL MONTE CATSUP 2 for 29c
14 oz. bottles
- MARASCHINO CHERRIES 9c
Queen Isabella 3 oz. bottle
- FRUIT SALAD—Stokely or Libby—8 oz. tins 3 cans 25c
- GRAPEFRUIT 29c
Stokely's No. 300 tins 3 cans
New Pack Fancy Whole Sections
- GRAPEFRUIT JUICE 33c
Libby's No. 2 tins 3 cans
- FRUIT COCKTAIL 25c
Dainty Mix, No. 1 tins 2 cans
- PEACHES 25c
Stokely's Halves or Slices No. 1 tall tins 2 for
- KREMEL 19c
Your choice of flavors 6 pkg.
- PINEAPPLE JUICE 35c
Del Monte lg. No. 2 tins, 3 cans
- TOMATO JUICE 25c
Del Regue No. 1 tall tins 4 cans
- HOT SAUCE—Taste Tell 10c
Tomato, 8 oz. tins 3 cans
- TOMATOES—Josephine 29c
choice pk., No. 2 1/2 tins, 3 cans
- BABY FOODS 25c
Libby's or Clapps 3 cans
Your choice of any flavor.
- VAN CAMPE TOMATO SOUP, No. 1 tins 6 cans 29c
- OYSTERS—American Beauty 10c
8 oz. tins Can
- SHRIMP—Pellaco dry pack 5 oz. tins, 3 cans 33c
- SALMON—Libby's, Happyvale Alaska Pink tall tins, 3 cans 33c
- COGGANUT 25c
Bakers sweetened long shred For holiday pastries lb. pkg.
- RAISINE 19c
Thompson Seedless 4 lb. bag
New crop with a grape-like flavor.
- JANDY PEELS 33c
Citron-Orange-Lemon lb.
- CURRENTS 10c
California new crop 12 oz. pkg.
- JELLO 5c
Pure fruit flavors pkg.
- JELL WELL 14c
Your choice of flavors, 3 pkg.
- SLEEPY HOLLOW SYRUP 19c
pure cane and maple pt. tin
Qt. tin 35c
- WALDORF TISSUE 19c
Soft and absorbent 4 rolls
- CRYSTAL WHITE 33c
10 bars
- PEETS GRANULATED SOAP 29c
Lrgs. pkg.
- LIFE BUOY SOAP 25c
4 bars
- ARGO STARCH 25c
Corn or Glass 3 pkgs.
- MAZOLA OIL 39c
Qt. tins
- LOOSE-WILES COOKIES 23c
Fancy English Hyde Park Assortment pkg.
- SUPER SUDS 18c
Granulated lrg. pkg.

CHRISTMAS CANDY

- Satin Mix
- Broken Mix
- Jelly Beans
- Chocolate Drops
- Jumbo Orange Slices

A fine mixture of satin-finished hard candy in assorted colors and flavors. Tasty centered chocolates, assorted flavors, cone-shaped and coated with rich dark chocolate. Truly a beautiful Christmas mixture.

2 lbs. 25c

CANNED VEGETABLES

- String Beans, No. 2 tin
- Kidney Beans, No. 303 tin
- Sliced Beets, No. 3 tin
- Corn, Gold, Bant., 303 tin
- Diced Carrots, No. 2 tin
- Hominy, No. 2 tin
- Peas, Lindy, 303 tin
- Pumpkin, Ray Mal, No. 2
- Spaghetti, Van Camp's, No. 300 tin

Your Choice of Any Assortment

3 cans 25c Dozen cans 98c

KITCHEN CRAFT FLOUR

guarantee better results in cakes, pies, biscuits

24 1/2-lb. bag . . . 75c
 40-lb. bag \$1.39 Barrel \$5.39
 Harvest Blossom—24 1/2-lb. 85c 40-lb. \$1.29 Barrel \$4.99

COFFEE

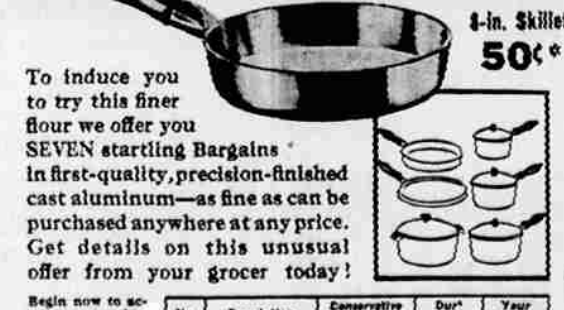
- AIRWAY 3 lbs. 39c
- NOB HILL 2 lbs. 39c
- EDWARDS 2 lb. tin 45c

MIXERS

- CANADA DRY Ginger Ale
- Sparkling Water
- Lime Rickey 12-oz. bottles 10c
- 28-oz. bottle 2 for 35c

RARE BARGAINS in Finest Extra-heavy CAST ALUMINUM WARE

to Users of PILLSBURY'S BEST FLOUR



To induce you to try this finer flour we offer you SEVEN startling Bargains! In first-quality, precision-finished cast aluminum—as fine as can be purchased anywhere at any price. Get details on this unusual offer from your grocer today!

No.	Description	Conservative Retail Price	Our Price	Your Saving
1	4-in. Skillet	\$2.45	\$1.39	\$1.06
2	10 1/2-in. Skillet	2.85	1.89	1.46
3	10 1/2-in. Fanneka Griddle	2.75	1.89	1.71
4	7-qt. Covered Saucepan	2.95	1.99	1.59
5	7-qt. Covered Saucepan	1.75	1.25	1.56
6	7-qt. Covered Saucepan	4.15	1.89	2.81
7	8-qt. Dutch Oven	2.85	2.39	1.33

Begin now to acquire a complete matched set of this fine kitchen ware at these remarkable savings.

HERE'S THE OFFER

*Plus two PILLSBURY'S STARS taken from recipe folders enclosed in every bag of PILLSBURY'S BEST FLOUR Milled on the Pacific Coast

OPENING SATURDAY

KING'S PIE AND COFFEE SHOP

Free Opening Day CUP OF COFFEE with each piece of pie

Pies made to order.

Also complete assortment of Pies to take home.

425 E. Main
 Across from Roxy theater

SAFEGWAY