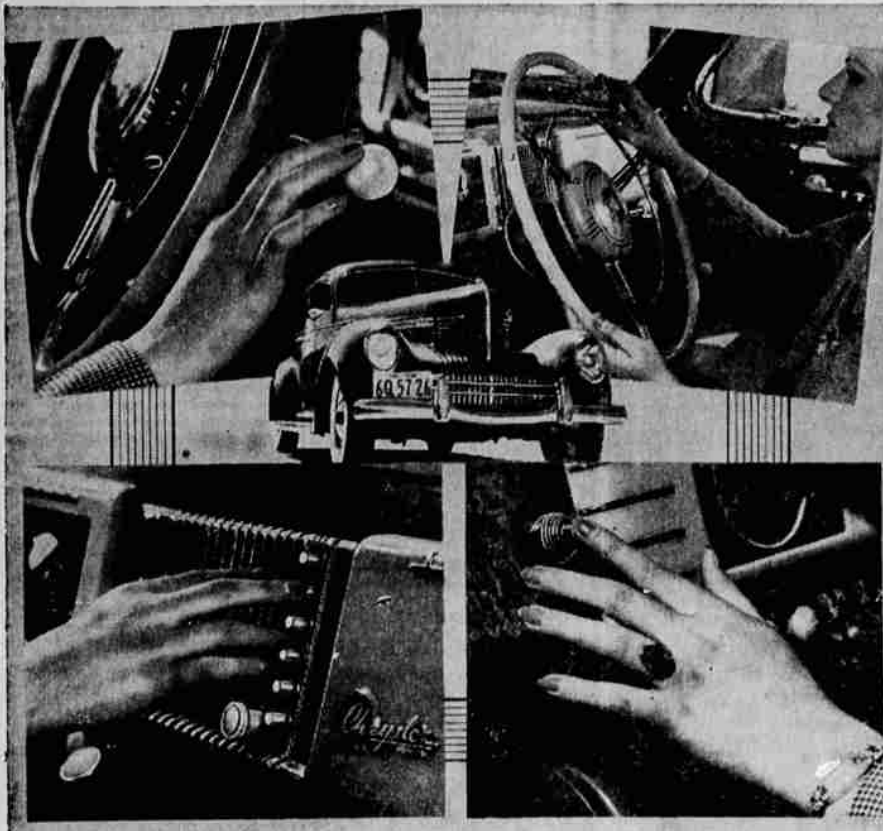


1939 AUTOMOBILE SHOW EDITION 1939

FINGER-TIP CONTROL FOR 1939 CHRYSLER



Driving has been greatly simplified and made considerably safer in the 1939 Chrysler by the refinement of major control devices so that they are easily operated by the finger-tips. Above left, The steering column gear-shift not only brings operation within finger-tip reach of the steering wheel and simplifies control, but affords more leg room in the driver's compartment. Above right, A simple reach of the fingers from steering wheel to horn rim operates this warning signal. Lower left, A push-button radio, optional equipment at slight additional cost on all 1939 Chryslers, practically eliminates the necessity of diverting attention from driving to tune-in a favorite radio station. Lower right, A finger-tip starter button located next to the instrument panel on the 1939 Chrysler, is easily found and aids quick starting.

Designed for Smooth, Safe Ride



The smooth quiet ride of a new automobile must start with the tire. In Wards new first-quality Riverside it does, according to H. L. Brown, manager of the Medford Ward store. At high speed or slow, this tire rolls with a smoothness formerly accomplished only by eliminating center traction safety. Wards, by scientifically designing center members, has achieved the quietness of plain ribs with the increased safety of center traction. The result is minimized vibration, less rumble and increased smoothness.

1939 Desoto To Be Auto Show Feature



The 1939 Desoto, the result of millions spent to produce an automobile completely restyled, will be on display at the Lions Club Auto Show in the space occupied by a new exhibitor this year, the Briggs-Humphrey Motor company, local Desoto-Fivmouth dealer.

The new firm, which is only a few months old, has enjoyed a phenomenal success due almost entirely to the popularity of Desoto and Plymouth, according to the "two Franks," Frank Briggs and Frank Humphrey, owners.

"The style features, ease of handling, roominess, comfort and economy of these new automobiles have produced a demand for them far beyond the fondest hopes we had when we opened a few months ago," Mr. Humphrey said. "We have found it necessary to increase our carload orders so that we now have a shipment on the way most of the time."

TURKEY JUDGING NEARING FINALS

ROSEBURG, Ore., Dec. 8.—(AP)—Suspense among exhibitors at the northwestern turkey show in progress at Oakland, Ore., tightened today as judges began narrowing the field and approached the selection of the champion birds. With the bronze class, the largest group, still to be judged, it was anticipated that the final selections would not be made before late this afternoon.

In the divisions so far judged, first place winners still are in competition for honors as breed champions as well as class and show champions.

Use Mail Tribune Want Ads.

SIMONIZ Preserves the Finish and Beauty of a New Car.
Daily's Auto Painting
29 South Hartlett

NINE INDICTED ON FEDERAL CHARGES

TACOMA, Dec. 8.—(AP)—Nine persons were indicted by a federal grand jury here today on charges of tampering with United States coins and

postal money orders in southwest Washington.

All are in custody and will be arraigned immediately.

Jack Luckenbill and James Ryan, both transients, were charged with possession of counterfeit dollars following their arrest in Vancouver.

James E. Black, another transient, was indicted for possession of counterfeit quarters.

Albert H. Hicks, Joseph B. Babb and Henry L. Bruno were indicted for raising United States postal money orders in Vancouver.

Hicks, under the name of Arthur T. Hayes, was also indicted on a similar charge in connection with activities at Hoquiam, where he, Leon Moore, Dolores Moore, and Horace Milne were accused of raising money orders.

The first steam railway to carry public passengers was the Stockton and Darlington in England, opened in 1825.

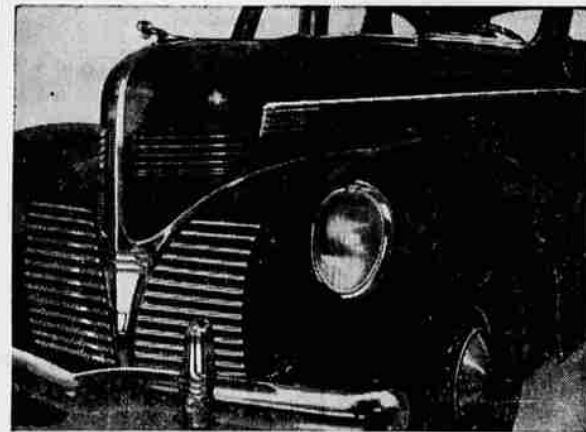
Use Mail Tribune Want Ads.

Unconscious Doctor Dies In Auto Crash

PORTLAND, Dec. 8.—(AP)—Dr. Arthur J. McLean, 44, Portland, was killed in an auto crash last night, apparently after he lost consciousness while driving alone. He was a nationally recognized authority on brain surgery.

Traffic Investigator George Phillips said he believed Dr. McLean became unconscious and the car plunged through a guard rail.

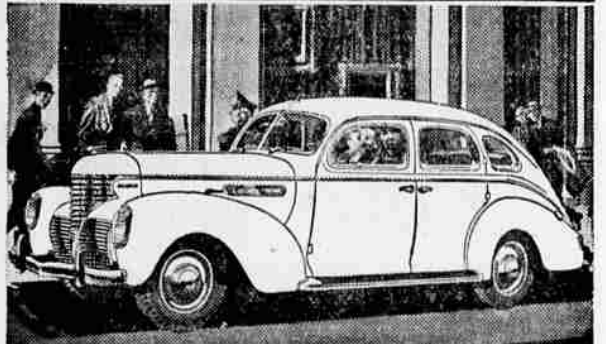
Use Mail Tribune Want Ads.



An entirely new and different Dodge is pictured in this close-up view of the new 1939 Dodge Luxury Liner with which the manufacturers are celebrating their Silver Anniversary. Note the artistic slope of the forward section, the handsome grille work, the headlamps set into sturdy fenders where their light is of more effective spread and closer to the road.

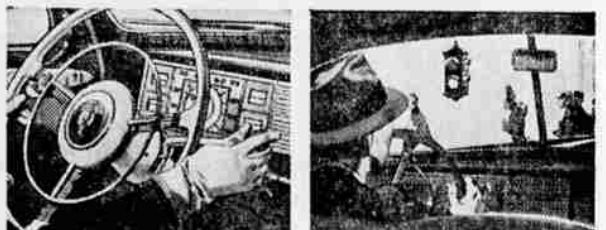
PROUDLY WE PRESENT

THIS EXCITING NEW 1939 DE SOTO...



DE SOTO'S STREAMLINE STYLING gives you more than up-to-the-minute smartness...it gives you more room, wider seats, more luggage space, better vision, greater safety, new driving ease, economy.

QUICK FACTS ABOUT A GREAT CAR



★ **NEW HANDY-SHIFT**—mounted on steering post for easier shifting. "Wobble-a-tick" is gone—there's plenty of room for three in front now.

★ **FULL-VIEW WINDSHIELD**—much higher and wider! Blind spots gone! Constant-Speed Electric Windshield Wipers clear two-thirds of windshield area.



★ **STREAMLINE STYLING** by De Soto! The kind of modern smartness you've been looking for...a car you would be proud to drive in any kind of company.

★ **STREAMLINED LUGGAGE LOCKER**—no trunk hump projects in rear, but there's a more room for luggage—23 cubic feet of usable space.

★ **5 SPEEDS FORWARD**—with perfected Automatic Overdrive...optional at extra cost. New performance and economy.

★ **NEW RIDE FORMULA**—Airplane-type Shock Absorbers, Rubber Float Body Mountings eliminate bumps and vibration.

★ **BIGGER SAFETY-STEEL BODY**—real protection and much more room. Sofa-wide seats front and rear.

★ **93-H.P., SUPER-ECONOMY ENGINE**—new SUPERFINISHING of moving parts...longer life, greater economy; Safety-Signal Speedometer; Non-Slam Doors, with new Rotary Door Locks; Durasheen Finish; Soft-Acting Hydraulic Brakes for smooth, sure stops.

STILL PRICED JUST ABOVE THE LOWEST!

SEE YOUR **DESOTO DEALER**
FOR A GREAT CAR... FINE SERVICE AND A SQUARE DEAL.

BRIGGS-HUMPHREY MOTOR CO.
132 So. Riverside Phone 1109

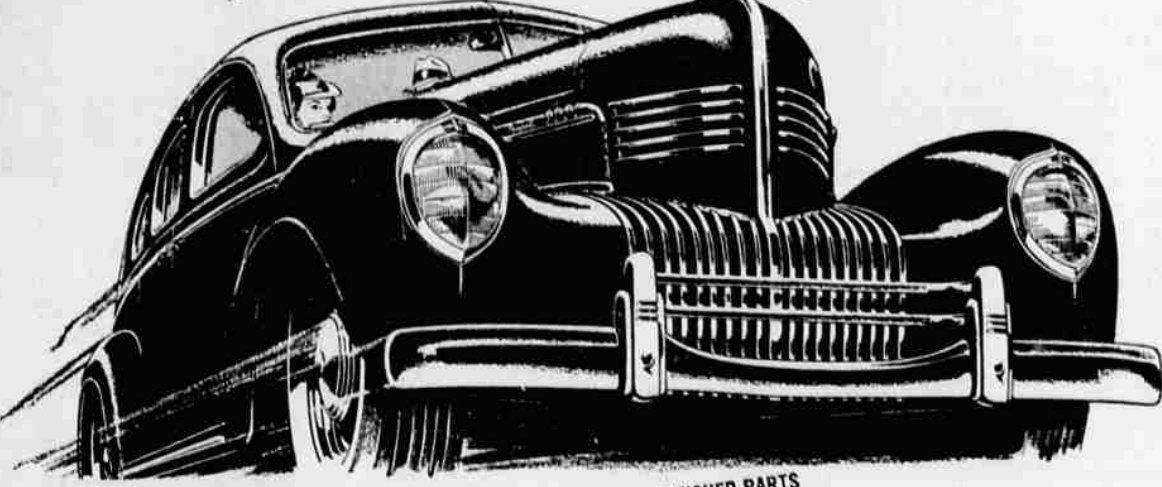
FOR 1939 Be Modern—Buy Chrysler!

NEW! ADVANCED AIRFLOW STYLING!
Outstanding beauty... Airflow streamlining developed to a new peak of distinction and grace! Modern interiors... with more roominess... more vision... more luxury... more style!

NEW! CRUISE AND CLIMB TRANSMISSION!
Like magic! Shifts back and forth automatically on demand between pick-up and cruising ranges. Instant pick-up at any speed. Gives far greater use of gas-saving overdrive!

NEW! STEERING WHEEL GEAR-SHIFT!
Easiest and most natural shift you ever saw! Right under your hand as it rests on the wheel! Feather-touch action! Noiseless... clashless... positive! Another great Chrysler development!

NEW! BODY 4" WIDER... MORE SPACE, GREATER COMFORT!
Spaciousness you can feel the moment you enter! Body 4" wider at the windshield! Broad, uncluttered floor! Chair high seats, wide as divans! A big step forward in modern comfort!



NEW! MORE LUGGAGE CAPACITY IN HIDDEN RECESSED TRUNK!
True streamlines banish the bulging trunk! Sweeping, tapering lines that conceal a bigger luggage compartment than ever. Opens from the rear, has room for a dozen pieces of luggage.

NEW! SUPERFINISHED PARTS DOUBLE ENGINE LIFE!
Bearings with surface accurate within two millionths of an inch! All engine working parts are superfinished, to insure perfect fit and an unbroken oil film. Doubles engine life.

NEW! POWER, HANDLING EASE, SAFETY... ALL AT A NEW CHRYSLER TOP!
Greatly increased horsepower! Cruise and Climb Transmission! Steering and gear-shifting of feather-touch ease! Chrysler's famous hydraulic brakes and Safety All-Steel Body! Most modern motor car on the road!

★
1939 CHRYSLER ROYAL
100 Horsepower • 119-in. Wheelbase
1939 CHRYSLER IMPERIAL
135 Horsepower • 125-in. Wheelbase

Also Chrysler's famous Custom Imperial in five and seven passenger sedans and limousines.

★ TUNE IN ON MAJOR BOWEN, COLUMBIA NETWORK, EVERY THURSDAY, 9 TO 10 P.M., E.S.T.

Deluxe Ford V-8 Convertible Coupe



THIS smart convertible coupe typifies the modern appearance of the new deluxe Ford V-8 cars. Influence of Lincoln-Zephyr styling is apparent in the low radiator grille, long hood and streamlined body. The interior is cozy. Seat cushion and backs are in russet genuine leather. Tops are tan-gray or black. Brakes are hydraulic, engine 85 horsepower, body all-steel. Equipment includes twin air electric horns, dual windshield wipers and sun visors, headlight beam control, battery condition indicator, cigar lighter, ash tray, and locked glove compartment. Rumble seat is standard. Luggage is carried in rear deck or back of seat.

GREATER SAFETY—MORE TIRE MILEAGE

With Wheels Balanced on the New **Bear DY-NAM-IC Wheel Balancer**

Unbalanced wheels are dangerous to safety—cause tires to wear out 20-50% quicker! That's why we now offer car owners this latest service. Bear Dy-nam-ic Wheel Balancing.

For the last word in Modern Automotive Service call on

DAWSON'S
"A SPECIALIZED SERVICE"
Magnetos—Wheel Balancing—Radios—Keys
Saws—Small Repairs

44 No. Front Street. Phone 263

SEE... AND DRIVE THE WORLD'S MOST MODERN MOTOR CAR
Hahn Motors
38 NORTH RIVERSIDE PHONE 18