

NATION DIGS OUT IN WAKE OF HEAVY TURKEY DAY SNOW

Nearly Two Score Fatalities—Shipping and Air Transportation Crippled—Many Autoists Marooned

By the Associated Press Snowplows and shovel brigades mopped up in cities and rural communities across the nation today in the wake of the worst Thanksgiving day storm in many years.

Incomplete reports showed nearly two score storm fatalities, with shipping and air transportation partially paralyzed along the Atlantic coast and elsewhere. Trains and buses ran behind schedule.

Automobile clubs received thousands of calls from drivers needing help as their cars were marooned in heavy snowdrifts and incapacitated by freezing temperatures.

Breakdowns or delays in air, land and coastal shipping traffic marred the holiday by preventing untold numbers of scheduled family reunions.

Swift-freezing sleet resulted in hundreds of highway accidents and slowed traffic to a snail's pace.

Washington, D. C., recorded seven inches of snow in 24 hours—more than fell throughout last winter.

Eight inches of snow blanketed metropolitan New York after a frost thunder and lightning storm, almost without precedent, in cold weather.

Weather bureau officials said it was the city's worst November snowstorm in 30 years.

At 3 a. m., the temperature sank to 17.5 degrees, a new low for the date. Five fatalities were recorded in New York vicinity, and commuter trains on the New York Central were interrupted.

Flying schedules were un-derrupted today, however. The sanitation department mobilized a snow army of 17,000 civilian shovelers in addition to the regular force of 6,000 sweepers and 4,000 truck drivers.

Weather forecasts on the Atlantic coast generally called for slow and continued cold tonight with fairly rising temperatures over the week-end.

Upstate New York counted 11 dead, with 10 inches of snow at Rochester, five each at Buffalo and Syracuse.

Approximately 100 west-bound barges fought their way eastward through the open canal, hoping to reach the large Hudson river before it freezes over.

Bus Marooned Twenty passengers on an Albany-New York bus were marooned for seven hours when the bus struck a cliff near Saratoga Springs.

In New England, the storm's death toll mounted to 14 amid a snowfall ranging from two to 15 inches.

The weather bureau said a disturbance of marked intensity was moving rapidly northeastward from a point off Cape Cod, Mass.

In Boston harbor, no vessels arrived and none sailed, with visibility at 400 yards.

A 15-hour snowfall mounded New Jersey with 9½ inches. Hundreds of motorists abandoned their cars due to drifts.

Huge drifts delayed motor and train service in Burlington, Vt., and travel and bus service was three hours behind schedule.

The Concord, N. Y., weather bureau reported a 14-inch snowfall, heaviest storm in a 24-hour period in November since 1903.

Games Cancelled The storm cost three lives in Pennsylvania, cancelled high school and college football games with a 12-inch fall and brought a warning from authorities travel was "extremely hazardous."

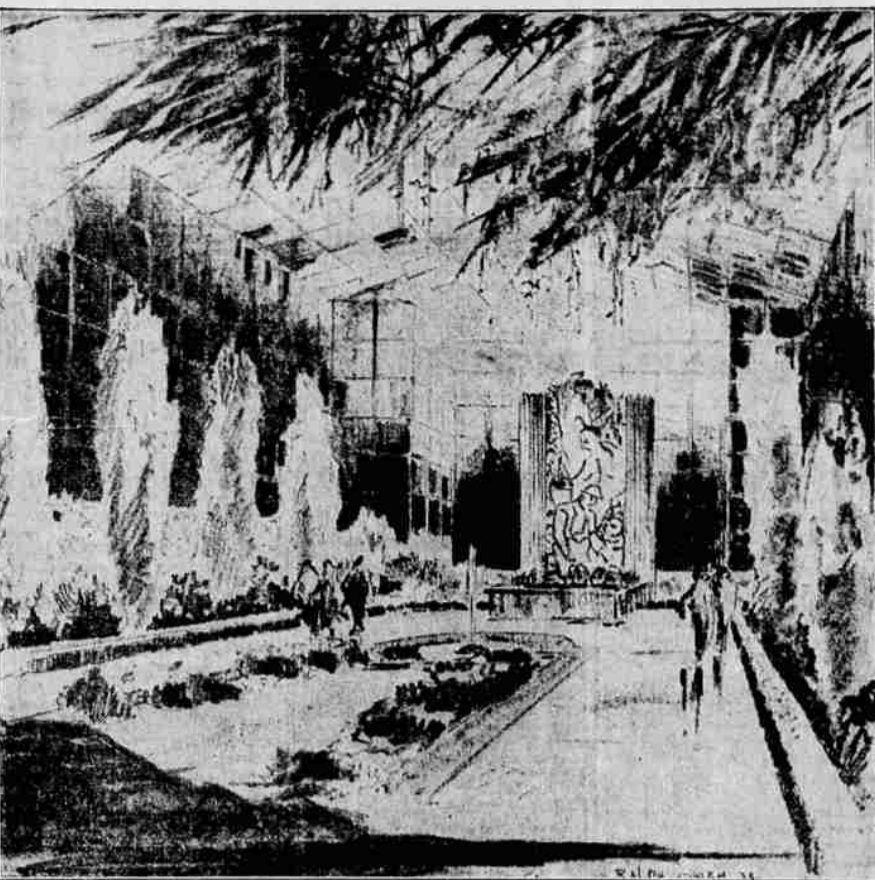
Snow covered the race track at Bowie, Md., causing owners to scratch 32 entries in the seven races.

In the New York area, the coast guard reported South Beach, East Beach and Fire Island—scenes of disaster in the recent hurricane on Long Island—were battered by high seas but no serious damage had been reported.

MRS. MEEKER SPEAKS AT ROOSEVELT SCHOOL Mrs. C. A. Meeker gave an interesting talk Wednesday to pupils of Roosevelt school on historical spots of Plymouth, Massachusetts and other nearby places.

The same day the first three grades were entertained in the auditorium with a Thanksgiving play written and presented by Mrs. Maxwell's room. A number of parents were present to see the little play.

TREASURE ISLAND FLOWER GARDEN



Presented today by the California State Commission and Mark Daniels, architect, is the above study of the proposed treatment of one wing of the Floricultural Palace on Treasure Island in 1939. Housed in a huge greenhouse which will offer an unobstructed interior view for its entire length of over 250 feet, 30 theme floral shows will be presented during the 10 months of the Exposition.

Menus of the Day

By Mrs. Alexander George For Small Family Breakfast Orange Juice Boiled Rice and Cream Fried Eggs Bran Bread and Butter Coffee Luncheon Ham and Vegetable Scramble Bread Strawberry Preserves Coconut Cream Cookies Plum Sauce Tea Dinner

Veal Patties Maashed Potatoes Creamed Asparagus Bread Currant Preserves Jellied Vegetable Salad Pumpkin Pie Coffee Ham and Vegetable Scramble 4 tablespoons fat

2 tablespoons chopped onions 3 tablespoons chopped celery 1-3 cup cooked green beans 1/2 cup diced cooked ham 2 tablespoons flour 1 egg 1 cup tomatoes 1/4 cup onion salt 1/4 teaspoon paprika

Brown onions in fat melted in a frying pan. Add rest of seasonings, beans and ham. Cook slowly and stir until well browned. Add flour and when blended add rest of the ingredients. Cook three minutes. Stir constantly.

Cocoanut Cream Cookies 1/2 cup butter 1 cup granulated sugar 1 egg 1-3 cup cream 1 teaspoon vanilla 1/2 teaspoon almond extract 1/2 teaspoon lemon extract 1/2 teaspoon salt 2 cups flour 2 teaspoon baking powder 1/2 cup cocoanut Cream butter and sugar. Add egg and cream and beat two minutes. Fold in remaining ingredients, mixing lightly. Drop portions of dough from tip of spoon onto a greased baking sheet. Flatten each cookie on top. Bake.

Veal Patties 1/2 pound chopped veal 1/4 pound salt 1/4 teaspoon paprika 1 teaspoon parsley 1/4 teaspoon minced onions 1/4 cup crumbs 3 pieces bacon Mix veal, salt, paprika, parsley, onions and crumbs. Shape into cakes that are one inch thick. Surround with strips. Hold in place with wooden picks. Broil.

MEDFORD LODGE, NO. 103, A. F. A. M. Special Communication Friday evening at 7:30 p. m. Work in the E. A. Degree. Visitors welcome. A. G. Bishop, Sec. L. L. Sanders, W.M. German silver is not silver at all. It originated in China.

Ladyfair PERSONALITY Brush FREE with 3 labels from POWOW and 5¢ to cover mailing cost. POWOW is that scratchless, all-purpose cleanser that ABSORBS dirt, grease and stubborn stains in thick creamy lather... and saves your hands. Buy it from your grocer. Then send 3 POWOW labels and 5¢ for mailing to the address below for your FREE PERSONALITY BRUSH. WEST COAST SOAP CO., 26th and Poplar, OAKLAND, Cal.

Death of Laura Bradley Removed Noted Pioneer; Reames Reviews Career

Senator Reames said this morning that "the death of Laura A. Bradley in Washington this Thanksgiving day removed one of Oregon's most noted pioneer women. She was born in Jacksonville, Oregon, in 1857. Her husband, Jay Bradley, died in 1893, leaving Mrs. Bradley to care for and educate their three children. She taught school in Jacksonville and here, and gave each of the children a university education.

"Otto F. Bradley, a son, is now in charge of the Community Budget for Boston, Mass.; the daughter, Mrs. Basil Manly, lives in Washington, D. C. Mr. Manly is chairman of the federal power commission, and has been a member of that body since its organization; her son, Lawson G. Bradley, lived for many years in Idaho, but is again a resident of Medford.

"When we arrived in Washington, Mrs. Manly and Mrs. Bradley were among the first to renew old acquaintances. We found Mrs. Bradley just as bright and keen and full of life and energy as she had ever been. After our return to Medford, she made every definite plans to fly here, and to attend the annual meeting of the Southern Oregon Pioneer association at Jacksonville. Just before she was to have taken the plane she wrote Mrs. Reames expressing the belief that she ought not really to undertake the long journey. She expressed great regret at not being able to attend. She was one of the oldest living native daughters, and her presence would have added great interest to the occasion.

"Up to the very time of her death she retained pleasant memories of her associations here, and a real love for this country and its traditions. All who knew her and of her will greatly regret her death."

CHICAGO YARDS CONTINUE IDLE CHICAGO, Nov. 25.—(AP)—For the fourth consecutive day, excluding the Thanksgiving holiday, a strike of CIO union yard workers tied up Chicago's huge stock yards. No livestock quotations were available. Both sides prepared for a mediation conference with federal conciliators tomorrow. The union was demanding a 40-hour week, overtime pay, written contract, closed shop and the check-off. The Union Stock Yard and Transit company, spokesmen said, particularly opposes the closed shop and check-off.

THREE STEPS TO BUYING A CAR 1. SEE THE FIRST NATIONAL BANK, any branch (Investigate the Cash Buyer Plan automobile financing) 2. SELECT YOUR CAR... NEW OR USED (under three years old) 3. PAY CASH TO THE DEALER OR OWNER You supply one-third the price in trade-in or cash; we lend you the balance required to pay for both car and insurance YOU NEED NOT BE A DEPOSITOR TO FINANCE THROUGH THIS BANK ANY BRANCH FIRST NATIONAL BANK OF PORTLAND

manding a 40-hour week, overtime pay, written contract, closed shop and the check-off. The Union Stock Yard and Transit company, spokesmen said, particularly opposes the closed shop and check-off. Only 7,000 head of hogs, 3,000 cattle and 8,000 sheep were received today, nearly all being shipped direct to packers. The run was 11,000 less than a week ago. The U. S. department of agriculture estimated 5,000 hogs would be received here tomorrow, 500 cattle and 2,000 sheep.

60 PER CENT OF TURKEYS SOLD

Close to 60 percent of the turkey crop of the Rogue River valley was sold to the Thanksgiving trade and price prospects appear better for the Christmas market, according to County Agent Robert G. Fowler. The price rose two to three cents locally Wednesday as the demand grew. There was also a lack of turkeys in the California markets, particularly Los Angeles. The county agent believes estimates of the local turkey crop were high. It was estimated as between 38,000 and 40,000 birds—the same as last year. Growers will start fattening their fowls for the Christmas and New Years markets at once. Shipping is expected to start in about two weeks.

Livestock

Portland PORTLAND, Ore., Nov. 25.—(P)—(US Dept. Agr.)—Hogs: 200 including 130 direct, market strong, best trucked in 10 higher, good-choice 165-210-pound drivens \$8.25-9.55; best 245-pound \$7.75, 340-355-pound butcher sows \$6.50-7.00, choice light feeder pigs quotable \$8.25 and above. Cattle: 25 calves 25 all direct, market nominal, medium-good steers quotable \$7.00-8.75, medium-good heifers \$6.00-8.40, good beef cows \$5.25-6.00, low cutter and cutter cows \$2.50-3.50, medium-good bulls quotable \$4.75-5.75, choice vealers eligible \$9.00. Sheep: 1500 all through or direct, market nominally steady, late inquiry broader, good-choice lambs \$7.50-8.25, yearlings salable \$5.00-6.00, good-choice ewes nominally \$3.00-4.00.

South San Francisco SOUTH SAN FRANCISCO, Nov. 25.—(P)—(US Dept. Agr.)—Hogs 1,500, including 1,460 direct; light supply sold fully steady; small lot good 171 pound butchers topped at \$8.75; part load 143 pound light lights \$8.25; good sows saleable mainly 7.00. Cattle 250, including 70 direct. No early action on steers; undertone firm; half load good light fed steers bid at \$8.75, uniformly good light fed steers quoted up to \$9.00; the stock opened fully steady; two loads medium to mostly good 995-1,045; range cows \$4.75-6.00, package common range cows \$5.00; low cutters and cutters \$3.50-4.25; package fresh dairy cows \$4.50; bulls absent, medium grades quoted up to \$6.00. Calves none. Nominal; good to choice vealers quoted around \$9.50-10.50. Sheep none; market quoted nominally steady; good to choice wool lambs quoted up to \$8.75; early shorn fat ewes saleable up to \$4.25. One deck 87-pound medium-pelt lambs from local feed lot \$8.50. LIVESTOCK

Portland Produce

PORTLAND, Ore., Nov. 25.—(AP)—BUTTER—Prints A grade, 30½ lb. in parchment wrappers, 31½ lb. cartons; B grade, 29, 29½ lb. in parchment wrappers, 30½ lb. in cartons. BUTTERFAT — Portland delivery buying prices: A grade, 29-29½ lb. Portland delivery; B grade, 1½ lb. less; C grade, 6c lb. less. Country delivery, 27½ lb. for A grade. EGGS—Wholesalers' buying price: Specials, 38½ doz.; extras, 34c doz.; standards, 30c doz.; extra medium, 29c doz.; extras, small, 24c doz. TURKEYS—Selling prices: Dressed, new crop hens, 24c lb.; toms, 22c lb.; toms, 20c lb. Cheese, country meats, live poultry, potatoes, onions, wool, hay, steady, unchanged.

Portland Wheat

PORTLAND, Ore., Nov. 25.—(AP)—Grain: (wheat) Open High Low Close May 64½ 64½ 63½ 63½ Dec. 62 62 62 62 Cash grain: Oats, No. 2, 58-lb. white \$26.50; No. 2, 38-lb. gray, nominal. Barley, No. 2, 48-lb. B. W. 422. Corn, No. 2, E. Y. Ship, \$36. Cash wheat (bid): Soft white 62c; western white 62c; western red 61c. Hard red winter ordinary 58c; 11 percent 58c; 12 percent 62c; 13 percent 65c; 14 percent 68c. Hard white, Baart ordinary, 62c; 12 percent 62c; 13 percent 63c; 14 percent 64c.

Chicago Wheat

CHICAGO, Nov. 25.—(AP)—Wheat: Dec. 62½ 62½ 61½ 61½ March 64½ 64½ 63½ 63½ May 65½ 65½ 64½ 64½ July 65½ 65½ 65 65½

Wall St. Report

NEW YORK, Nov. 25.—(AP)—Buying forces tuned in on aircraft and specialties during today's stock market session and paid scant attention to many recent leaders. Gains ran to 2 or more points for favorites in the forenoon, but numerous issues stepped down from their best marks at the last and minor declines were plentiful. Weakness of the British pound and French franc in terms of the dollar served to revive speculative wariness as the thought arose maybe to the Munich phase might not prove to be so permanent. Hoarding and buying of dollars abroad brought another boost in gold at London to a new high record figure. Activity was slow throughout, although a number of low-priced issues turned over in large blocks in the morning. New highs for the year were posted for United Aircraft, Sperry, Aviation Corp., Consolidated Aircraft, Richfield Oil, Dunhill and Safeway Stores, among others. Today's closing prices for 32 selected stocks follow:

WISE MOTORISTS RATE IT HIGH It's always "profit-taking" time for Pennsylvania oil buyers who stick to Standard Penn. This 100% Pennsylvania oil stands up under all driving conditions—delivers real "profits" in long mileage and smooth engine performance. STANDARD PENN MOTOR OIL 100% PURE PENNSYLVANIA STANDARD OIL COMPANY OF CALIFORNIA

3 Good Reasons for Complete Coffee Satisfaction at SAFEWAY

1 Airway Coffee 14¢ 2 1/2 lbs. 39¢ 2 Nob Hill Coffee 20¢ 2 1/2 lbs. 39¢ 3 Edwards' Coffee 23¢ 2 1/2 lbs. 45¢ MILK Maximum 4 cans 25c Sugar Fine Granulated 10 lb. 49c BROOMS Four sew 29c

CORN MEAL Peacock Yellow 9 lb. bag 25c FLAPJACK FLOUR Albers 4 lb. bag 25c BUCKWHEAT Peacock Self-rising Lg. pkg. 25c CORN BEEF—Swift's, 12 oz. tin 2 cans 35c 6 cans 98¢ SALMON—Del Monte Alaska Red, 6 cans \$1.15 CORN—Lindy 303 tins 3 cans 23c Case 24—303 tins \$1.73 PEAS—Lindy 303 tins 3 cans 23c Case 24 cans \$1.73 TOMATOES—2 1/2 tins 3 cans 25c Case 24 cans \$1.98 STRING BEANS No. 2 tins 3 cans 25c Case 24 cans \$1.89 OATS Albers Cup and Saucer or Carnation Cup and Saucer Wheat Flakes. Lg. pkg. 25c CORN FLAKES Albers Crispi-fresh 4 pkg. 25c FLOUR Kitchen Craft 49-lb. \$1.39 49-lb. \$5.39 Harvest Blossom 49-lb. \$1.29 49-lb. \$4.98 Airlight 49-lb. \$5.5e 49-lb. \$3.75 DOG FOOD Friskies pkg. 25c

Fresh Fruits & Vegetables Grapefruit Texas Seedless 3 for 10c Apples Newtown box 69c Apples Spitzenberg Box . 79c Onions 10 lb. bag 19c Spuds U. S. No. 2 100 lb. bag . 89c QUALITY MEATS Hamburger . lb. 10c Steak . . . lb. 17½c Sirloin or T-Bone Pork Sausage lb. 12½c Cottage Cheese pint 11c Bacon . . . lb. 23c Broken Sliced