

FARMERS DISCUSS MARKET SITUATION AT COUNTY MEET

County Agricultural Committee Addressed by J. D. Mickle, Director of Agriculture at Oregon State

Regular session of the county agricultural committee was held Monday evening in the county agent's office at the courthouse with attendance of 25. Gold Hill, Central Point, Eagle Point, Roxy Ann, Phoenix, Jacksonville, Lake Creek, River view, Griffin Creek, Talent and Upper Applegate Granges were represented.

Visitors who added interest to the gathering were J. D. Mickle, director of agriculture at Oregon State college, and M. T. Wray, E. A. Palmer, and R. A. Miskche of the agricultural committee of the Jackson County Chamber of Commerce.

Spirited round-table discussion concerning the market situation on hogs, veni, beef, barley, hay, wheat, dairy products, turkeys, alfalfa seed, and hybrid corn was interspersed with some splendid talks by Professor Mickle.

County Agent R. G. Fowler pointed out that the most important part of a cow is the receptacle in which the milk is prepared and stored. This is called the udder. By a clever arrangement this is divided into four compartments, each with a separate tap. By this means the milk is divided at its source, so that one part goes to the landlord, one to the mortgagee, one to the government, and one to the farmer. Sometimes

one of the compartments will be defective, and in such cases the farmer is omitted.

Dairymen of the Gold Hill district are considering installing a milk testing plant, and Professor Mickle explained in detail the new method of testing all milk used in the city of Portland. This method has been in use there for the last four months. It was inaugurated to satisfy the demand of producers and has saved enough to pay for the cost entailed, well proving its worth. This has been done under the milk and cream grading law.

It was urged that it be brought to the attention of dairy and cattle men that all tests for Bangs disease should be completed before May 1. A new man is being placed in the field to assist Dr. Gitzen in this work. Until the first of May indemnity is available to those who must cull their herds and the test will be made free of charge. Jackson county has an enviable record, in that only four percent of the cattle tested have been found to be reactors, and it is highly desirable to eliminate the few cases remaining.

Professor Mickle is very enthusiastic about the farmers' market at Salt Lake City and brought the subject to the attention of the assembly. He highly complimented the local group upon their cooperative efforts and stated that it would be to the advantage of every county in Oregon to follow its example.

He asked for the help of the farmers in the apprehension of cattle and poultry thieves, and gave a description of the procedures followed by illegitimate produce buyers and nursery stock swindlers. He urged the necessity of appealing to County Agent Fowler or the state police as soon as a loss is discovered, that the authorities may get promptly to work.

OREGON TO TRACK WANDERING TUNA

PORTLAND, Ore., Nov. 17.—(AP)—The Oregon state fish commission intends to solve the age-old riddle concerning spawning grounds and migrations of albacore tuna.

Master Fish Warden M. T. Hoy said yesterday that Vernon E. Brock, department trachyologist, would be assigned to track the elusive fish.

"The albacore industry of this state already has passed the million dollar mark in a few short years," Hoy said, "and we believe that we ought to know more about this valuable fish."

Hoy said the commission's survey boat would be sent next spring to prospect mid-Pacific waters where Honolulu fishermen have found tuna in large numbers during months when they fail to appear off the north Pacific mainland.

Trachy first appeared in commercial quantities off the Oregon coast two years ago.

JAPANESE ATTACK AMERICAN CLERIC

HANKOW, Nov. 17.—(AP)—Paul Joselyn, United States consul general in Hankow, made a second protest to the Japanese today against an incident in which Japanese soldiers were alleged to have thrown acid at Dr. Logan H. Root, American missionary physician.

Joselyn yesterday demanded investigation of the incident which occurred at Wuchang, November 13, but the Japanese consul general did not reply.

Americans at Wuchang gave the following account: Dr. Root appeared at St. Michael's church and found the Japanese driving out Chinese refugees whom the mission owners have permitted to occupy the church. He closed the mission gates, excluding the Japanese, whereupon they tore an American flag hanging over the gate and threw acid at Dr. Root. The acid did not strike him.

An old farmhouse near Durham, N. C., which served as headquarters for the last Confederate army in the field in 1865, has been restored and opened as a southern shrine.

SENTENCE FARM HAND ON LARCENY CHARGE


ROSEBURG, Ore., Nov. 17.—(AP)—Arthur M. Belec, itinerant farm hand, recently arrested here on a larceny charge, was sentenced in circuit court today to five years in the state penitentiary, when he pleaded guilty to a district attorney's information.

Belec, District Attorney J. V. Long told the court, forged the name of his employer, Vincent Prescher, local dairyman, to a check which he presented to a Roseburg store in payment for a pair of shoes. He fled with the shoes while the clerk was consulting the manager of the store regarding the check, Long said. The district attorney also told the court that Belec has had several previous convictions on forgery and larceny charges.

Closing time for Too Late to Classify Ads is 1:30 p. m.

Delicious Steaming-Hot PORRIDGE . . .
It's easy with Roman Meal. Delicious nut-like flavor. Recipes on package. Ask your Grocer.
Cooks in 5 Minutes

HANES UNDERWEAR IS MY WINTER-FRONT



Old Man Winter's cooling system hasn't a chance against HANES Heavyweight Champion Here's a union-suit with all the soft snugness you need to put an end to freeze-ups. If you want to beat the sleet, this Winter, get up to your neck in HANES!

Just as important as warmth, though, is the way the Heavyweight Champion fits. Knit to clasp you closely around the ribs, it's also cut to match your measure from the shoulder to the crotch. You can sit, bend, and reach—without any hitching or pulling! Buttons, buttonholes, cuffs, and seams are sewed to keep the wear in this underwear! See your HANES Dealer today.



HANES Winter Sets (the new middleweight underwear for indoor workers, shown by small figure), 55c to 67c the garment. HANES Heavyweight Shirts and Drawers for men (single of 59c; Boys' Undershirts, 49c; Merrichild Sleepers, 75c. P. H. Hanes Knitting Co., Winston-Salem, N. C.

MANN'S DOLLAR DAY

City Wide \$ Day Sales Friday and Saturday

DRESS SALE

Values to \$19.95

A Super \$ Day Dress Value! Here are 50 lovely Silk Crepe and light weight Wool Dresses in street, sport and afternoon styles for just \$9 each. Regular and half sizes in this sale group.

\$9

SALE OF FUR FABRIC COATS

Attention, coat buyers! Fine quality Fur Fabric Coats in belted, straight swagger and short box styles for just \$9 each. These come in Black only; sizes 12 to 40.

\$9

Sale of FALL and WINTER Tailored Suits

Buy your Tailored Winter Suit tomorrow! Here are hand tailored herringbone tweeds and rich plain suitings at \$15.00. Colors are Pearl Gray, Bankers Gray, Navy, Oxford and Black. Sizes 12 to 20.

\$15

SHOE DEPT. SPECIALS

Children's Shoes, Special at \$1
Men's Shoe Trees, Special \$1
See these Arch Supports for Women's Galoshes, per pair
Women's Rubbers, per pair
Also a few Women's and Misses Shoes marked at, pair

Cannon Bath Towels

Buy Cannon Bath Towels tomorrow! New colors and patterns in these famous Turkish towels on sale. Buy for home or for gifts

Regular 59c Towels, 2 for \$1
Regular 39c Towels, 3 for \$1
Regular 25c Towels, 5 for \$1
Reg. 15c Hand Towels, 8 for \$1

PRINTED PERCALE

\$ Day Special on genuine fast color "Dubarry" Percale Prints. New Autumn colors and patterns for house coats, wash frocks and aprons. A real value.

Regular 25c Quality
6 yards for \$1

MANN'S FOR \$ DAY BARGAINS

COTTON WASH FROCKS

Special for \$ Day! Women's and Misses' fast color print wash dresses at \$1.00 each. These good looking house frocks come in various styles and patterns in sizes 12 to 48. Pick out several tomorrow at Mann's.

WARM SHOULDERETTES

A timely \$ Day Sale of warm shoulderettes. These cozy garments come in all the wanted pastel shades and white. They are beautifully knit from fine rayon and wool and launder perfectly. Buy for self or gifts.

SLIP-OVER SWEATERS

A Big \$ Day Sale of Women's and Misses' Slip-over style Sweaters at \$1.00 each. Included at this price are Wine, Rust, Blue, Navy, Black, White and Pastels. Your choice tomorrow at Mann's

WOMEN'S BLOUSES

\$ Day Sale of Women's Rayon Blouses and Henda Broadcloth Shirts. Colors are Red, Rust, Blue, Brown and White. Good selection of sizes. These Blouses and Shirts are a real buy at

WOMEN'S SILK HOSE

Special for \$ Day! New Fall shades in Rollins, Hole-proof and Mann's chiffon silk hose . . . a \$1.15 ringless hose in two and three-thread weights. Buy several pair at this \$ Day price

BOYS' KAYNEE SUITS

\$ Day Sale of Boys' Kaynee Suits. Here are values up to \$2.98 in sizes 3 to 6 years. Wool pant and broadcloth styles in fast color Navy, Blue, Brown, Dark Green and White. Jr. Shop second floor.

WOMEN'S OUTING GOWNS

A \$ Day Sale of Women's and Misses' long sleeve outing flannel gowns. These are regular 89c values on sale tomorrow at 2 for \$1.00. Mann's Main Floor.

2 For \$1.00

KIDDIES' RAYON SHORTS

Special for \$ Day! Kiddies' good quality Rayon Shorts at 5 pair for \$1.00. These are regular 25c values. Your choice at Mann's tomorrow. Junior Shop second floor.

5 For \$1.00

36-IN. OUTING FLANNEL

\$ Day Sale of our regular 25c Outing Flannel. A 36-inch extra heavy outing for gowns, pajamas, etc. Good range of light and dark colored stripes and prints.

6 Yards \$1

50-INCH HOMESPUNS

Special for \$ Days! Our regular \$1.25 per yard 50-inch Homespun Drapery Fabrics at \$1.00 yard. A guaranteed color fast material for all types of heavy drapery work. (Lower Floor.)

QUILTED MATTRESS PADS

Our regular \$1.39 Quilted Mattress Pads on sale tomorrow for \$1.00 each. These pads are double stitched and made from the very finest material. Protect your mattress with a good pad.

Full Bed Size COTTON BLANKETS

\$ Day Special! Good quality full bed size Jacquard Cotton Blankets in a wide assortment of designs and colors. Ideal for extra bed covers or for the car. Regular \$1.29 value.

NEW FALL HANDBAGS

Special for \$ Days! New shapes and sizes in Fall and Winter Hand Bags. These are of Fabricoid Suede cloth and genuine leathers. Frame and zipper types in all the new costume shades. Your choice

VAN RAALTE GLOVES

A Big \$ Day special on Women's and Misses' Van Raalte fabric and leather trimmed Fall Gloves. Colors include Black, Brown, Lacquer, Green, Navy, Blue and Spice. All sizes on sale at

BOXED BATH SOAPS

Special for \$ Day! Our regular \$1.25 boxes of Jergens fine Bath Soaps at \$1.00 box. These are 4 Bar boxes in Rose, Carnation, Lavender, Jasmin and Gardenia. Toiletries Dept. Main Aisle.

NEW FALL SCARFS

\$ Day Sale of Fall Scarfs. Regular 50c squares and Ascots in chiffons, crepes and soft wools. Solid shades, prints and plaids in Autumn colors. Main Aisle.

2 For \$1

MANN'S ANTISEPTIC

Another \$ Day Special from the Toiletries Dept. Mann's regular 49c 16-oz. bottle of safe Antiseptic and Mouth Wash. Main Aisle. Special at Mann's tomorrow.

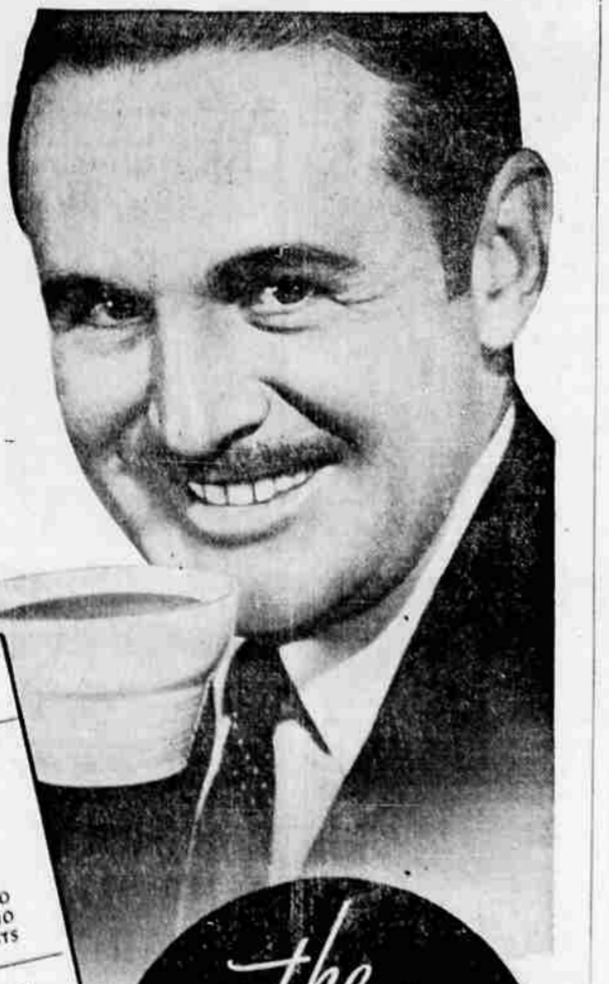
3 For \$1

Say! I like this way of saving money!

And so do thousands of other coffee lovers who have discovered Airway's grand fresh flavor! For Airway is an aristocrat . . . a selected, mellow-mild blend famed for its exquisite flavor and pleasant aroma.

And yet, all this goodness is yours at surprisingly little cost. And why? Because Airway is packaged and delivered in a modern, thrifty way. No extra handling . . . no delays! Off it goes, straight from roaster to grocer, where you buy it in the bean and have it ground to order!

Consequently, Airway gives you the three things you want most in coffee: distinctive flavor, roaster freshness, genuine economy. Why not order a pound today (on our money-back guarantee, of course!) . . . and try it in your own kitchen?



GOOD COFFEE INEXPENSIVE? CERTAINLY! HERE'S HOW AIRWAY DOES IT.

- 1 CHOICE, MILD COFFEES ROASTED EVERY DAY IN OUR FIVE HANDY PLANTS
- 2 DELIVERED DIRECT TO SELECTED STORES, NO EXTRA HANDLING COSTS
- 3 SENSIBLY PACKED TO SAVE MONEY, QUICK SALES INSURE FRESHNESS
- 4 STORE GROUND FOR YOUR OWN WAY OF MAKING COFFEE

the **ARISTOCRAT** of thrifty coffees

AIRWAY COFFEE

SEE IT GROUND—KNOW IT'S FRESH!