

TRIBUNE PLANT TO BE SETTING LOCAL MOVIE NEWS REEL

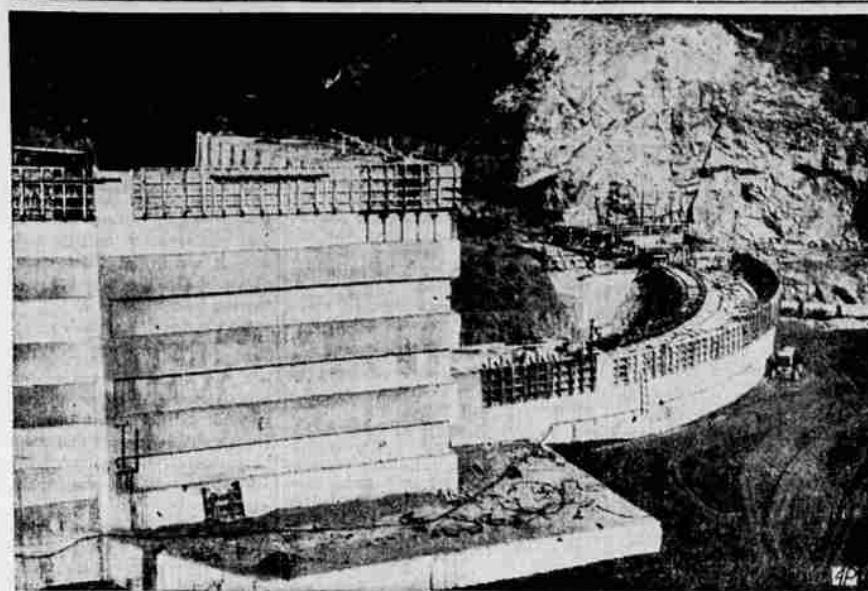
Many of the elements which combine to create a newspaper are to be photographed during this coming week in the Medford Mail Tribune plant...

The entire process will be compiled into a newsreel which will be shown October 18, 19 and 20, in conjunction with the all local sound movie, "Runnin' Wild."

In order to assure the public of having an opportunity to see motion pictures made, and also give the public a chance to see themselves on the screen, many of the action scenes of "Runnin' Wild" will be filmed in the downtown district one week from this coming Saturday...

Considering that this is an all local attraction and one which should be of interest to everyone, the producer is extremely anxious to have the co-operation of various musical and dramatic organizations...

California motorists led the nation in visiting Yellowstone Park during the first half of 1938.



EUREKA COUNTS THE DAYS until residents will be using new water supply following completion of Eureka's \$390,000 dam (above). Key unit of a \$2,000,000 water supply project...

NO AGREEMENT IN FACTORY DISPUTE

PORTLAND, Oct. 6.—(AP)—Officials of the B. P. John and Doernbecher furniture companies had failed today to reach an agreement over proposed wage cuts with 1300 picketing employees...

Employees seek to reduce wages 10 cents per hour in new contracts.

The full moon nearest to September 21 is at that time rises at nearly the same hour for several consecutive evenings...

David Lloyd George received permanent possession of a silver cup for the best black currants at the National Farmers' Union Food show.

Closing time for Iowa Late to Clarity Ads is 1:30 p. m.

Rain Aids Pastures PORTLAND, Oct. 6.—(AP)—The first general showers this week improved the prospects of early green feeds...

Pacific U. Gains FOREST GROVE, Oct. 6.—(AP)—Registration of 318 students, a 10 per cent increase compared with a year ago...

Stock Seat Sold NEW YORK, Oct. 6.—(AP)—Sale of a New York stock exchange seat was announced today at \$70,000...

Named Jugo Consul ASTORIA, Ore., Oct. 6.—(AP)—A commission signed by President Roosevelt yesterday made Frank M. Francesevich, president of the Oregon senate, honorary consul in Oregon and Washington for Jugoslavia.

Swedish Fox Breeder's Association estimates that Sweden now markets about 1,000,000 silver fox pelts annually compared with only 100,000 ten years ago.

DEMOCRATS LEAD MULTNOMAH POLL

PORTLAND, Oct. 6.—(AP)—Democrats led by nearly 10,000 today in Multnomah county's record registration of 182,282. The previous high was 182,092 in 1936.

With the books remaining open for three days, Democrats had 93,802 and Republicans 88,934.

Away from British rule, remote tribal country around Assam, Burma and Tibet is still a center of slavery, but steady progress is being made by international officers through its abolition.

Late summer, when the cover crop is seeded, is the best time to apply lime on land that needs it for growing vegetables.

A pumpkin on a vine at Gainesville, Fla. grew an average of more than one and a third pounds daily until it reached a weight of 107 pounds at maturity.

Livestock

Portland

PORTLAND, Ore., Oct. 6.—(AP-USA)—Hogs 750, including 305 direct market slow, mostly steady; good-choice 165-215 lb. driveline mostly \$8.75, few down \$8.65; carload lots quotable to \$9.00; 225-50 lb. butchers \$8.00-25; light \$2.25, \$8.00-25; packing sows, \$6.75-7.00; few 104 lb feeder pigs, \$8.50; light-weight lots quotable to \$8.75.

CATTLE 200, including 60 through and direct; calves 50, including 10 direct market fairly active, mostly steady on kinds available; few stockers steers, \$5.50-6.00; slaughter steers scarce; medium-good quotable \$6.75-8.40; common-medium heifers \$5.00-6.65; cullers downward \$3.75; low cutter and cutter cows, \$2.75-3.25; common medium, \$3.75-4.50; good beef, \$5.00-7.00; common-medium bulls, \$4.50-5.40; liberal supplies; medium heavy calves unsold; few cull and common vealers, \$4.50-6.00; choice vealers quotable up to \$9.50.

SHEEP 250, including 97 direct; double-choice, 100, including 10 Washington lambs steady with Monday at \$7.25; other offerings slow; few sales steady; quality mostly poor; few good down \$5.00; yearlings available around \$4.00-50; few good slaughter ewes, \$2.50.

CHICAGO, Oct. 6.—(AP-USA)—Hogs 13,000, including 3,000 direct; slow; mostly steady to 10c lower than Wednesday's average; top \$8.70; good and choice 210-280 lbs., \$8.45-85; 160-190 lbs., \$8.25-40; underweights and good pigs, \$7.50-8.15; good light packing sows, \$7.90-8.25; medium weights and heavies, \$7.25-85.

CATTLE 5,000; calves 1,000; choice steers and yearlings very scarce; shipper demand for such kind fairly broad; but supply too small to fill orders; top steers, \$13.25; few loads \$11.75-12.75; no strictly choice yearlings available; most of the steer run medium and good kind selling at \$7.50-10.50; these also fully steady; cows generally steady, but best action on cutter grade; no choice fed heifers in best lots; odd lots up to \$10.50 and better; market firm; weighty sausage bulls steady; practical top, \$6.50; light weights weak; vealers steady with Wednesday's close; mostly \$11 down.

SHEEP 8,000, including 5,000 direct; strong to 15c higher; top natives \$8.40; bulk, \$8.25; downward to \$8; good and choice yearlings, \$5.75 to \$6.50; sheep firm; most native ewes \$3.00; few \$3.25.

SOUTH SAN FRANCISCO, Aug. 6.—(AP-USA)—Hogs 600; nothing on sale; market quoted nominally steady; medium to choice, 170-225 lb. butchers considered saleable \$8.85-9.10; sows quoted mainly \$6.75-85.

CATTLE 200; steers firm; good, 950-940; shortfords, \$8.10-25; medium 1010 lb. steers, \$6-7; good cows, \$5.75; range cows, \$5.00; low dairy cows up to \$5.25; bulls, \$5-6. Calves \$8; nominal; good to choice vealers quoted around \$9-10.

SHEEP none; nominal; medium to good woolled lambs quoted \$6.50-7.50; medium-pelt slaughter ewes saleable \$3.25 down.

PORTLAND, Oct. 6.—(P)—BUTTER—Prints: A grade 29 1/2 lb. in parchment wrappers, 30 1/2 lb. in cartons; B grade 29 1/2 lb. in parchment wrappers, 30 1/2 lb. in cartons.

BUTTERFAT—Portland delivery; buying price: A grade 29 1/2-29c lb. Portland delivery; B grade 1 1/2-29c lb. C grade 6c lb. less. Country delivery 26c lb. for A grade.

EGGS—Buying prices for whole salers: Specials 32c doz.; extras 28c doz.; standards 25c doz.; extra medium 22c doz.; undergrades 14c doz. Cheese, country meats, live poultry unchanged.

TURKEYS—Selling price: Dressed new crop hens 24-25c lb.; toms 25-26c lb. Buying prices: new hens 22c; toms 24c lb.

PORTLAND, Oct. 6.—(AP)—Wheat Open High Low Close Dec. 81 1/4 81 1/4 81 1/4 81 1/4 May 53 53 53 53

Cash grain: Oats, No. 2, 88-lb. white, \$25.25. No. 2, 85-lb. gray, nominal. Barley, No. 2, 45-lb. h. w., \$20.25. Corn, No. 2, E. T. shipment, \$25.80.

Portland Produce

PORTLAND, Oct. 6.—(AP)—Wheat Open High Low Close Dec. 81 1/4 81 1/4 81 1/4 81 1/4 May 53 53 53 53

Portland Wheat

PORTLAND, Oct. 6.—(AP)—Wheat Open High Low Close Dec. 81 1/4 81 1/4 81 1/4 81 1/4 May 53 53 53 53

Ask Doctor About This Ideal Way TO LOSE FAT

READ EVERY WORD Make up your mind now that you'll lose some of that ugly fat and really enjoy life.

No one can blame you if you don't want to take harmful drugs, go on starvation diets and do backbreaking exercises. No sane woman would, and for sensible women like yourself who really want to reduce, yet don't expect miracles overnight—who are willing to faithfully follow a most simple, inexpensive and pleasant 28-day plan (women considerably overweight naturally require longer periods), we suggest this easy plan.

First of all go light on fatty foods and sweets. Eat plentifully of lean meats, fresh fruits and vegetables. And for proper functioning be sure to take a half teaspoonful of Kruschen Salts in hot water every morning. And let's get this straight right now about Kruschen—

It is not harmful. It is NOT just one salt as some people may ignorantly believe. Look on the box! You'll see it is a blend of 6 active mineral salts, which when dissolved in water is similar to the famous medicinal waters of European spas where wealthy fat people have gone for years.

A jar of Kruschen costs but a few cents and makes 5 gallons of marvelous mineral health water. Get a jar RIGHT AWAY! At Western Thrift Stores and Drugists everywhere.

Table with 2 columns: Item and Price. Includes 'Cash wheat, bid: Soft white, 62; western white, 63; western red, 60.'

Table with 2 columns: Item and Price. Includes 'Chicago Wheat CHICAGO, Oct. 6.—(P)—Wheat failed to hold fractional gains scored here today.'

Table with 2 columns: Item and Price. Includes 'Wall St. Report NEW YORK, Oct. 6.—(AP)—Profiting stemmed another fast rally in today's stock market and early gains running to more than 3 points were reduced or canceled at the close.'

Table with 2 columns: Item and Price. Includes 'And government. Today's closing prices for 32 selected stocks follow: Al. Chem. & Dye 188, Am. Can 102, Am. & Pgn. Pow 4 1/4, A. T. & T. 146 1/2, Anaconda 37, A. T. & S. P. 38, Bendix Avia. 22, Beth. Steel 61, Caterpillar Tract. 80 1/2, Chrysler 78 1/2, Coml. Solv. 10 1/2, Curtiss-Wright 142 1/2, DuPont 44 1/2, Gen. Elec. 36 1/2, Gen. Motors 60, Int. Harvst. 65 1/2, I. T. & T. 11 1/2, Johns-Man. 104 1/2, Monty Ward 40 1/2, North Amer. 83 1/2, Penney (J. C.) 33 1/2, Phillips Pet. 41 1/2, U. S. Steel 61 1/2.'

Table with 2 columns: Item and Price. Includes 'Sou. Pac. 18 1/4, Std. Brands 7 1/4, St. Oil Cal. 30 1/2, St. Oil N. J. 54 1/2, Trans. Amer. 10 1/2, Union Carb. 28, Unit. Aircraft 29 1/2, U. S. Steel 61 1/2.'

Schilling for that added touch. Schilling Poultry Seasoning is a blend of all those savory spices that make your poultry dressing taste the way you hoped it would! Besides giving that added touch to poultry dressing, you'll find this prepared seasoning is excellent in meat dishes.

HADLEY'S the shop smart women prefer. Dramatic New BLOUSES designed for this season of suits. Distinguished by their fabrics and fine, intricate detail, these blouses proclaim the season's trend to elegance. See Our Window Display. New Policy Prices on All Coats, Suits, Dresses. COATS Formerly 12.95 to 45.00 Now \$10.95 to \$39.50. SUITS Formerly 12.95 to 39.95 Now \$10.95 to \$25.00. DRESSES Formerly 5.95 to 24.95 Now \$4.85 to \$19.75. HATS Formerly 2.00 to 6.95 Now \$1.79 to \$5.89.



NO WORK, NO DIRT, NO WORRY with Low-Cost Gas Heating

Let winter come! It brings no work, no discomfort when you enjoy carefree, economical gas heating. A touch of a button, a turn of a thermostat and—presto—floods of cheerful, healthful warmth circulate uniformly wherever desired.

SAVE AS MUCH AS 20% With the New Low Gas Rates

Gas heating now costs less than ever before. New rates assure major economies. Let us survey your heating needs today—give you complete plans and prices. No obligation. For water heating, cooking and refrigeration too, gas is economical—today's real fuel bargain.

See the New Gas Ranges! GAS COOKS BETTER - COSTS LESS. SOUTHERN OREGON GAS CORP. Includes images of various gas appliances like 'MODERN PAYNE FORCED AIR CENTRAL GAS FURNACE', 'GAS FLOOR FURNACE', 'GAS RADIANT HEATER', 'GAS WALL HEATER', and 'GAS CIRCULATING CABINET HEATER'.