



THE GIRL YOU NEVER FORGET So sweet, so charming, so vital... she's a picture in your heart. Artist Alfred Buell has captured this romantic moment of youth.

We all remember our own romantic dreams... thrill to youthful vitality and spirit.

For those whose zest for new experiences has not lost its keen edge, Kellogg has fashioned an entirely new ready-to-eat cereal — ALL-RYE Flakes.

You've heard about the wonderful nourishment in rye — food for fitness. Kellogg has flaked and toasted the whole grain — brought you all of the delicious tangy flavor of the rye.

Here's a treat that will make breakfast appetites stand at attention. Serve with milk or cream. It's delicious. Made by Kellogg in Battle Creek.

FOOD FOR FITNESS

Percentage Composition of Kellogg's ALL-RYE Flakes: Protein 9.0, Carbohydrate 82.5, Fiber 1.6, Ash 2.4, Cereal Oils 1.1, Moisture 2.2. Calories per oz. 107. Phosphorus 0.255%, Iron 0.0087%, Calcium 0.043%, Copper 4.0 mg. per kg.



Society and Clubs

By Clara Mary Davis

Seattle Couple Honored Guests

A no host party given Wednesday night for Mr. and Mrs. Lynn B. Croxdale of Seattle was an enjoyable event.

Guests participating in the affair gathered at the home of Mr. and Mrs. Robert Mikeche on West Jackson boulevard and then proceeded to Burgoyne, where dancing was held for the remainder of the evening.

Those present were Mr. and Mrs. Croxdale, Mr. and Mrs. Mikeche, Mr. and Mrs. Ivan Harrington, Mr. and Mrs. Kelton Strader, Mr. and Mrs. Wilton White, Bill Walker, Miss Margie Moran, Mrs. Jack Walker and Paul Luf.

Mr. and Mrs. Croxdale were house guests in Medford during the week of Mrs. Croxdale's parents, Dr. and Mrs. E. G. Riddell. They left for their Seattle home yesterday.

Miss Gore Attends Pomona College

Miss Dorothy Gore, daughter of Mr. and Mrs. E. E. Gore, left Medford recently for Clairmont, Calif., to enter her senior year at Pomona College.

This is Miss Gore's second year at the California college. Prior to attending the latter school, she attended University of Oregon where she was affiliated with Phi Mu sorority and Mu Phi Epsilon, national musical honorary. During her Pomona stay, Miss Gore has been outstanding in musical activities on the campus and is a member of the string quartet and the orchestra.

Baptist Group Meets Tuesday

The Ladies Auxiliary of the First Baptist church will meet at the home of Mrs. E. M. Wilson, 340 South Riverside avenue, Tuesday afternoon at 2 o'clock.

The missionary topic, "The Swing Bridge" with Mrs. Frank Shinson as leader will be given. Members are asked to bring their gift boxes.

Frink Home Scene Of Luncheon Party

The L. G. Frink home in Talent was the scene of a delightful luncheon party Wednesday afternoon when Mrs. Frink was hostess to a group of friends. Guest of honor at the affair was Miss Edith Moar of San Francisco who is house guest of her sister, Mrs. Charles Gilbert at the Vawter apartments.

The luncheon table was artistically arranged with a centerpiece of yellow flowers, a yellow color scheme was carried out in the other decorations.

Guests included the honoree Miss Moar, Mrs. B. L. Sanderson, Mrs. D. A. Hutchison, Mrs. Charles Gilbert, Mrs. W. H. McGowan, Mrs. Loyd Sanders and Miss Gertrude Weeks.

Following luncheon the remainder of the afternoon was spent in pleasant conversation.

Presbyterian Group Luncheon

Delegates from Medford, Jacksonville, Merrill, Malin, Tule Lake, Klamath Falls, Phoenix, Grants Pass, Roseburg, Myrtle Point, Bandon, North Bend, Rogue River and Ashland, the hostess church, attended the luncheon in the Presbyterian church in Ashland Monday afternoon with the Martha Gillette Guild as sponsors.

A number of distinguished guests were present. Mrs. William Campbell, intermediate synodical secretary, Roseburg; Miss Mary Moore, member of the foreign mission board, San

Francisco; Miss Helen Whitaker, Myrtle Point, late of China, and the officers of the Presbyterian society. Covers were laid for 60 guests at the luncheon tables, fall flowers were attractive decorations. Miss Stella Hays, with a number of assistants was in charge.

Mrs. Roy Martin of Jacksonville spoke during the luncheon and Mrs. Otto Neidermeyer also of Jacksonville was on the morning program.

Miss Moar Feted At Luncheon

Mrs. Charles Gilbert was hostess yesterday afternoon at her home in the Vawter apartments for a luncheon and card party honoring her sister, Miss Edith Moar of San Francisco.

Decorations in autumn colors were carried out in table and room arrangements. Guests bidden to the enjoyable event included the following: Miss Moar, Miss Gertrude Weeks, Mrs. W. H. McGowan, Mrs. H. P. Hargrave, Mrs. B. L. Sanderson, Mrs. D. A. Hutchison, Mrs. L. G. Frink and Mrs. C. Thompson. Mrs. Sanderson and Miss Weeks were recipients of prizes and Miss Moar was presented a handsome guest gift.

AAUW Luncheon At Hotel Holland

American Association of University Women will convene tomorrow afternoon at 12:30 o'clock for luncheon at the Hotel Holland. It was erroneously stated in yesterday's paper that the meeting would take place at the Hotel Medford.

All university women interested in A. A. U. W. are invited to attend the session. Reservations may be made by calling Miss Vera Humphrey at 1580-X. Mrs. Justin Smith, A. A. U. W. president, will preside at the luncheon meeting.

Use Mail Tribune Want Ads.

D.A.R. Organization To Place Marker

The history of the nation and especially the Rogue River Valley is one of the interests of Crater Lake chapter, Daughters of the American Revolution. In order to perpetuate this interest for future generations, the organization is planning to place a marker at some historic spot in the near future.

Funds for the marker will be raised through a rummage sale, the time and place of which will be announced at a later date.

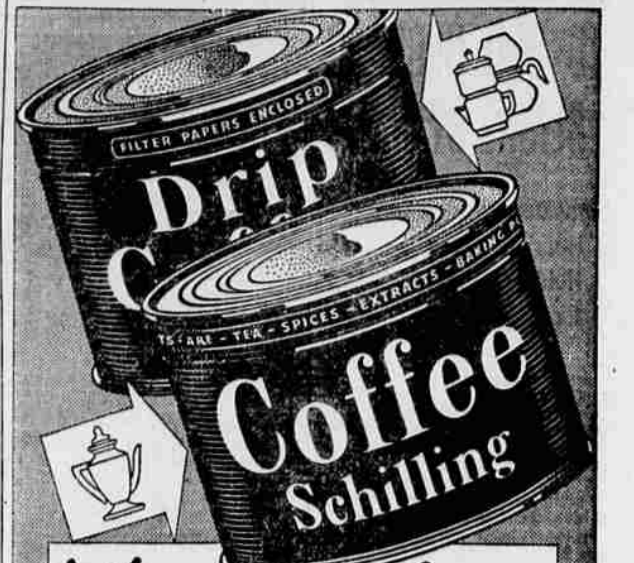
Calendar

Saturday 12:30 p. m.—A. A. U. W. luncheon at Hotel Holland.

SOUTHERN OREGON MASONS TO MEET

Masons from all sections of southern Oregon are expected to attend the meeting of Table Rock Council number 15 to be held at the Medford Masonic Temple Saturday afternoon and evening. The feature of this interesting session will be the conferring of the Super Excellent degree in the evening session with Most Illustrious Grand Master of Oregon, Ralph Sweeney as the guest of honor. Other grand officers are expected to come to Medford from Portland and northern points for this important meeting. The Marshfield Council will attend in a body, according to word received from the Coos bay area. The afternoon council session will convene at 4:00 o'clock, followed by

A banquet at the Masonic Temple at 6:30 p. m. In the evening at 8:00 o'clock, the Super Excellent degree work will be conducted with participating members in full costume for the brilliant pageant.



What COFFEE flavor!

You get real coffee-flavor when you buy Schilling! There's a kind to suit your method of making, too. Genuine drip coffee for drip or glass-maker and a special blend for percolator or boiling. Remember, there's more flavor to the cup with Schilling!

Filter Papers in Every Can of Drip Coffee

New Plymouth Here at Lower Prices!

BIG NEWS

VALUE IS UP, Price is Down...New Plymouth Gives You a Longer Wheelbase... New High-Torque Engine Performance... Perfected Remote Control Shifting...New Auto-Mesh Transmission...New Amola Steel Coil Springs...New True-Steady Steering...New "Safety Signal" Speedometer.

Bigger, Brilliant New "Roadking" and "De Luxe" Models NOW ON DISPLAY

HERE ARE the most sensational new cars the low-price field has ever known...the beautiful, new 1939 Plymouths!

At new lower prices, they bring you magnificent new styling—sweeping modern lines...extra room...luxurious new upholstery.

And Plymouth has a new ride that will astonish everybody!

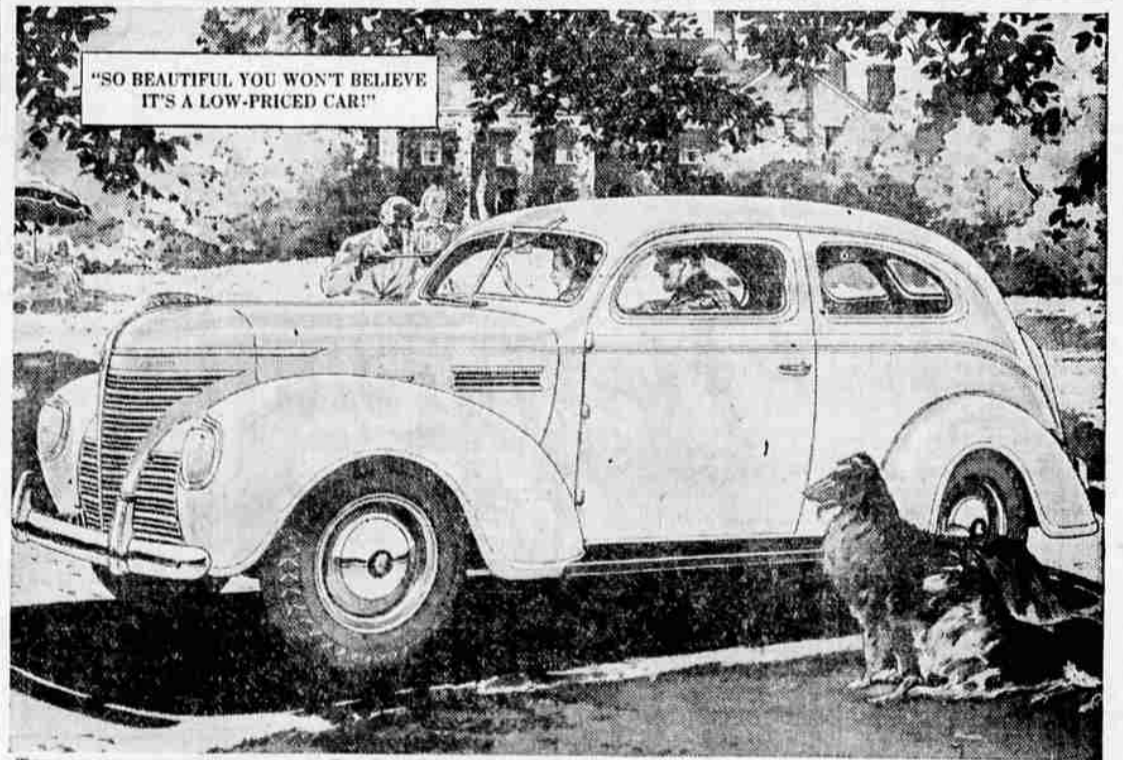
With new Amola Steel Coil Springs, the big new Plymouth gives you an amazingly smooth, soft ride on the roughest roads.

You'll get a new thrill from Plymouth's sparkling, new High-Torque engine performance. And yet the 1939 Plymouth is still more economical in every way.

Easy to own...your present car will probably represent a large proportion of Plymouth's low delivered price...balance in surprisingly low monthly installments.



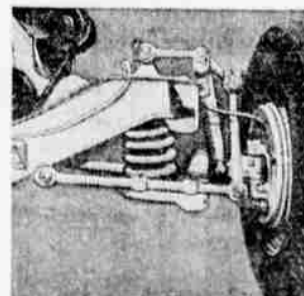
SO BEAUTIFUL you won't believe it's a low-priced car...new style headlamps give greatly increased road lighting.



THE NEW 1939 PLYMOUTH "ROADKING" Two-Door Touring Sedan! Experience the new smoothness of its patented Floating Power engine mountings, its 100% hydraulic, double-action brakes. See this great new car—drive it—at your nearby Plymouth dealer.



PERFECTED Remote Control Gear Shifting—with Auto-Mesh Transmission, standard on "De Luxe."

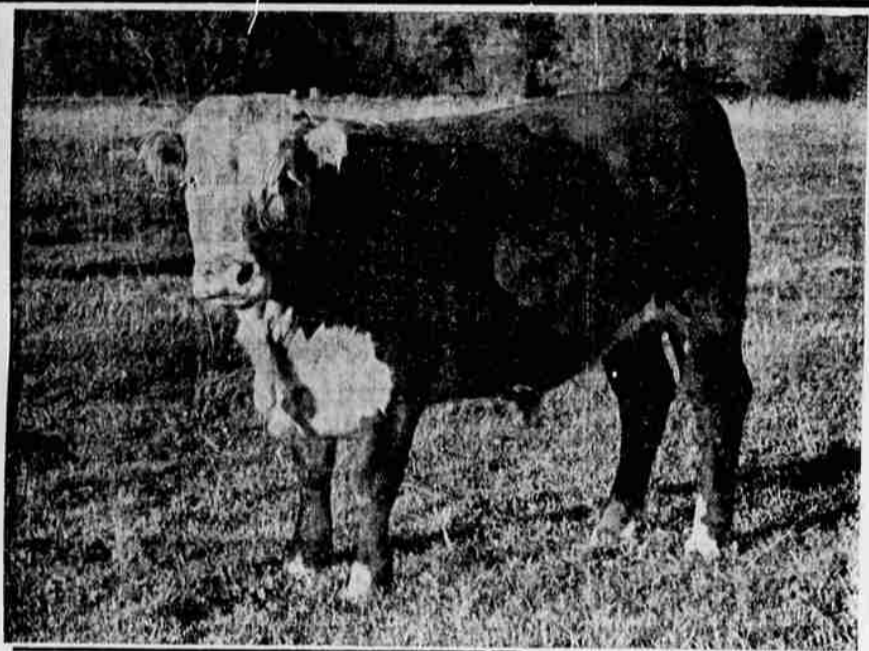


THE FINEST springing design known, wonderful new ride... Amola Steel Coil Springs, miracle of metallurgy.

EASY TO BUY CONVENIENT TERMS

"Detroit delivered prices" include front and rear bumpers and bumper guards, spare wheel, tire and tube, foot control for headlight beam with indicator on instrument panel, ash-tray front and rear, sun visor, safety glass and big trunk space (9.3 cubic feet). Plymouth "Roadking" models start at \$645; "De Luxe" models slightly higher. Prices INCLUDE ALL FEDERAL TAXES. State, local taxes not included. PLYMOUTH DIVISION OF CHRYSLER CORPORATION, Detroit, Michigan.

TUNE IN MAJOR BOWES' AMATEUR HOUR, C. B. S. NETWORK, THURSDAYS, 9 TO 10 P. M., E. S. T.



Above: One of those famous Garrett Grain Fed Steer Beef available only at The Central Market. Be sure to try a steak or roast from this fine beef and note the difference in Flavor and Tenderness.

- SUGAR . . . 3 lb. 17c Brown or Powdered
MATCHES . 6 box ctn. 15c Strike Anywhere
SNOWDRIFT . 3 lb. 50c with its goodness locked in
Peanut Butter . lb. 10c Freshly ground
TOMATOES . 3 for 29c Bagley's solid pack. Large 2 1/2 can
COFFEE . . . lb. 23c ROYAL CUP—Ground fresh as you like it.
Royal Pudding, choc, van, butterscotch pg. 5c
Powow, new househd. cleanser, 2 cans 19c
Pickles, Stafford's sliced dills . . . qt. 15c
White Rose, the new bleach . . . 1/2 gal. 23c
Tomato Juice 2 cans 25c Knight's large No. 2 1/2 can
Wheat Flakes, Kellogg's pkg. 10c
Coffee, Hills, Schillings lb. 28c
Beans, small white 3 lb. 14c
Rice, fancy Blue Rose 3 lb. 14c
Salmon, No. 1 can 2 cans 25c Happyvate Fancy Pink

- POT ROAST lb. 18c Garrett Steers
GROUND BEEF lb. 15c This is all Pure Beef Not Just Ordinary Hamburger
LARD 4 lb. pkg. 43c Swift's Silverleaf. Why buy shortening when Lard is so cheap?
BACON lb. 25c Mild Cure—Lean Streaked
HAM lb. 27c Swift's Tenderized—Half or Whole. Center cuts by the slice lb. 45c

Home Made Candy Sale by the Ladies of the Grace Circle of the Presbyterian Church

- Southern Oregon's Freshest Fruits and Vegetables
SPUDS KLAMATH GEMS! No. 2's 50 lbs. 33c No. 1's 50 lbs. 63c
Sweet Potatoes 3 lbs. 10c Delicious baked with Ham
Cabbage lb. 2c Local Grown
Oranges Ea. 1c Sweet July
Beans 2 lbs. 19c Green Lima's, Local Grown

Open Every Evening Until 8:00 o'clock! Prices for September 24 and 26
Haw's CENTRAL MARKET 129 NO. CENTRAL- PHONES 1980-1981-FREE DELIVERY

PLYMOUTH BUILDS GREAT CARS THE "ROADKING" THE "DE LUXE"

