

LOCAL and PERSONAL

From Grants Pass—Mr. and Mrs. Francis J. Byrne of Grants Pass were Medford visitors today.
Attend Matches—Mr. and Mrs. Art Cooper of Ashland attended the wrestling matches in the armory here last evening.
Enters College—Donald Horner, son of O. O. Horner of 816 Taylor street, left Saturday by train for Corvallis where he will enter Oregon State college for his first year. He graduated from Medford high school last year.
In Portland—U. S. Senator A. Evan Reames spent yesterday in Portland on business. He left here early in the morning and returned at midnight, travelling each way by United Air Lines.
On Vacation—Mr. and Mrs. Morse Halsey and son Dale and daughter Ruth of 110 Almond street left by motorcar today for Eugene where they will spend a week's vacation with relatives.
To College—Sam Kroschel will leave Medford Saturday for Eugene where he will take a postgraduate course in accounting at the University of Oregon. He graduated from the college last year.
Visits—Mrs. B. F. Belcher of Glendale spent the night in Portland as guest of Mr. and Mrs. E. L. Henninger at their home at 1000 West Main street. Mrs. Belcher was returning to her home in Glendale following a two months' visit in San Francisco.
Fires Out—Two small fires caused Sunday afternoon by lightning in the Butte Falls district were quickly extinguished. The state district warden's office said today. The fires were confined to the single trees that had been struck.
Continues North—Dr. J. Phaneuf of Los Angeles left this afternoon on a United Mailliner for Seattle after spending the night at Lake of the Woods. He arrived by Mailliner from the south yesterday afternoon. He was flown to the lake resort and brought back this noon by Thomas A. Culbertson, Jr.
Advertising Pays—Mr. and Mrs. Victor Bursell of Beall lane today realized the value of Mail Tribune classified advertising. Recently they advertised the sale of peaches at their Beall lane farm and the results were so quick and positive that all the peaches were soon sold. Mrs. Bursell today asked the Mail Tribune to notify the public that there are no peaches left. "People are still coming to buy peaches and we haven't any," she said. "The advertisement certainly was effective."

MARITIME UNION WANTS PROBE FOR DIES COMMITTEE

SAN FRANCISCO, Sept. 20.—(AP)—A demand for an investigation of the Dies investigating committee was made today in a letter to President Roosevelt from the maritime federation of the Pacific district council here.
The letter, made public by Z. R. Brown, secretary of San Francisco bay area district council No. 2, protested against the activity of the congressional committee inquiring into subversive activities and headed by Rep. Dies (D., Texas).
The letter urged Mr. Roosevelt to direct the LaFollette civil liberties committee to investigate the congressional probe's activities.
It also asked the LaFollette committee probe "anti-labor forces in California, such as the activities of Stanley M. ("Larry") Doyle and activities of vigilantes in Grass Valley and Westwood, Calif.
Doyle was described in the letter as connected with "many anti-labor, anti-union and spying activities. There is indication he was instrumental in planning a detachment, with the knowledge of Gov. Charles H. Martin's office, in a hotel room occupied by Harry Bridges during the 1937 maritime federation convention in Portland, Ore."

PITCH TENTS FOR 4-H STOCK SHOW

Work of erecting tents at Riverside avenue and Fifth street for the Rotary-sponsored 4-H club livestock fair and auction was begun today. The fair will be held Thursday and Friday, with the showing of the stock scheduled for the first day. Friday will be the main day, however, with a parade set for 10:30 a. m. and the auction sale for the afternoon.
Closing time for Too Late to Classify Ads is 1:00 p. m.

Chan & Chan Chinese Medicine Co. Chinese medicine Co. relieved at once by our herbal remedies. Do you have: Asthma, Hay Fever, Stomach trouble, Constipation, Chronic cough, Rheumatism, Stomach trouble, Piles, Arthritis, Colitis, Eczema, Appendicitis, High Blood Pressure, Prostate, Heart, Liver, Bladder, Kidney, Lung, Blood, Urinary troubles, Herbs will give you relief 10 a. m. to 10 p. m.; Tuesday-Thursday 10-12 a. m. Closed Sunday. 235 E. Main

Livestock

Portland
PORTLAND, Ore., Sept. 20.—(AP)—USDA—HOGS: 350, active, fully steady, good to choice around 160-215 lb. drivina moats \$9.10, few outstanding lots \$9.20, carload lots quotable to \$9.35; 225-290 lb. butchers \$8.25 to \$8.75, light lights 7.20 to \$8.50 to \$9.00, packing sows \$7 to \$7.20; choice 99 to 119 lb. feeder pigs \$8.75.
CATTLE—100, including 33 through calves 25, rather slow, but about steady, poor quality considered; few low cut to common dairy type steers \$3.75 to \$5, few medium steers held around \$6.50, strictly good steers salable upward \$8.25, common heifers \$4.75 to \$5.50, good light grass heifers salable to \$7.35, low cutter and cutter cows \$2.75 to \$3.25, common to medium grades \$3.75 to \$4.75, good beef cows salable \$4.50 to \$5.50; good beef cows salable around \$5.50 to \$6.50; common bulls \$4.50 to \$5.50; choice vealers around \$5.50 to \$6.50; medium to good grades \$6.50 to \$8.50; common to medium 260-370 lb. calves \$4 to \$6.
SHEEP—300, slow, about steady, few good 80-93 lb. spring lambs \$6.50 to \$7.75; common to medium grades \$5 to \$6.25; good shorn lambs \$6.25; yearlings salable around \$4 to \$4.50; medium to good slaughter ewes nominally \$2 to \$2.75.
Chicago
CHICAGO, Sept. 20.—(AP)—USDA—Hogs 17,000, including 5,000 direct; market slow and uneven; 10-20c lower than Monday's average; top \$9.20; bulk good and choice 210-260 lbs. \$8.90 to \$11.75; 270-300 lbs. \$8.75 to \$9.50; most 170-190 lbs. \$7.50 to \$8.50; good light packing sows, \$6.85 to \$8.25; medium weights and heavies, \$7.00 to \$7.50.
CATTLE 8,000; calves 1,500; very dull trade on fed steers and yearlings other than highly finished kinds; even prime kinds slow; finishing heavy calves a bearish influence on shippers account; light heifer mixed yearlings steady, but most other classes cattle under pressure; prime steers held around \$13.50; several loads early \$11.50 to \$12.00; practically nothing done on common and medium grades; salable carry-over from Monday including fleshy heavy western grassers; best yearlings early \$11.75; mixed offerings, \$11.50; heifers, \$10.50; all cows weak; bulls steady to weak; vealers very scarce, steady at \$11.50 down; weighty sausage bulls \$6.50 to \$7.50; most stock calves and yearlings, \$8.00 to \$7.50, with selected offerings all weights up to \$9.25.
SHEEP 7,000, including 1,000 direct; late Monday spring lambs weak to \$6.50; 80-93 lb. natives and westerns, \$6.25; bulk natives, \$7.50 to \$7.75; westerns, \$7.75 to \$8.50; today's trade on spring lambs very slow; indications market steady to 15c lower; natives downward to \$7.50; good to choice westerns, \$7.75; best; sheep about steady; slaughter ewes, \$5.00 to \$5.25.
South San Francisco
SOUTH SAN FRANCISCO, Sept. 20.—(AP)—USDA—HOGS: 1,050, including 605 direct; fully steady; top and bulk 170 to 225-lb. butchers, \$9.90; few lighter weights and around 240 to 270-lb. butchers sorted out, \$9.40; one lot arrived late unsorted, packing sows 25c higher, \$7.40 to \$7.65.
CATTLE: 150; holdovers, 140; steers and range she stock steady; short load medium 850-lb. shorted steers, \$7.75; sorted, 3 head; few common light grassers down to \$5.50; short load medium 915-lb. range cows, \$5.35; sorted, 5 head, \$4.75; low grade cows strong; low cutters and cutters, \$3.25 to \$4.25; odd head dairy cows, \$1.50; odd medium bulls, \$5.50; Monday's steers fully steady; instances about 25c higher; four loads medium to good 975 to 1,000-lb. shorted steers, \$8.00; calves, 75, including 60 direct; unchanged; odd head choice vealers up to \$ 10.00; few common to medium, \$5.50 to \$6.25; few common light calves, \$5.50.
SHEEP: 2,350, including 2,050 direct; holdovers, 100; lambs active, fully steady; two decks medium to low-grade 80 to 81-lb. California medium-pelt lambs, \$7.00; good deck 67-lb. Oregon feeding lambs, \$6.00; good to choice full woolled lambs absent, quoted \$7.50 to possibly \$8.00; small lot common 98-lb. slaughter ewes, \$1.25.

CAROLINA COAST NOW IN PATH OF TROPICAL STORM

JACKSONVILLE, Fla., Sept. 20.—(AP)—The weather bureau today ordered northeast storm warnings displayed along the North Carolina coast and said a tropical hurricane of "great intensity" would pass east of Cape Hatteras tonight.
The bureau at 6:30 a. m. PST, said the storm which yesterday menaced south Florida now was moving north-northwestward or northward about 17 miles an hour.
The center of the hurricane, the weather bureau said, was about 300 miles east of Vero Beach, Fla., at 4 a. m. the exact location was given at latitude 28 degrees and longitude 75 degrees west.
The storm warnings were ordered up from Wilmington to Cape Hatteras and the weather bureau said "the storm will gradually turn toward the north-northeast with the center passing some distance east of Cape Hatteras tonight."
Meteorologists warned the hurricane would "cause increasing northerly winds on the north Carolina coast, becoming fresh to strong and probably reaching gale force at exposed places on the cape with hurricane winds some distance off shore."

Card of Thanks

We wish to express our sincere appreciation to our friends and neighbors for the sympathy extended us during the illness and death of our dear wife, mother and sister. Also for the beautiful floral offerings.
T. A. Muse and Family
Mr. and Mrs. J. T. Muse
Mr. and Mrs. J. A. Renfro
Mr. and Mrs. C. A. Tharp
Misses L. D. V. Brunow

DO NOT WAIT Until the Last Minute to Order Your Winter's Supply of Wood Orders Received for GREEN PINE SLABS and DRY FACTORY BLOCKS CAN NOW BE DELIVERED PROMPTLY
TIMBER PRODUCTS COMPANY MEDFORD OREGON End North Central Ave. Phone 7

Portland Wheat

PORTLAND, Sept. 20.—(AP)—Wheat: Open High Low Close Sept. 61 1/2 61 1/2 61 1/4 61 1/4 Dec 63 63 62 1/4 62 1/4 May 65 1/2 65 1/2 65 1/4 65 1/4
Cash grain:
Cats. No. 2 38 lb. white, \$24.50; No. 2 38 lb. gray, nominal.
Barley, No. 2, 45 lb. b. w., \$19.50.
Corn, No. 2 E. Y., shipment, \$28.50.
Soft wheat (bid):
Cash white, 61 1/2; western, 62.50; 61 1/2; western red, 60.
Hard red winter ordinary, 57 1/2; 11 per cent, 58; 12 per cent, 61 1/2; 13 per cent, 63 1/2; 14 per cent, 69 1/2.
Hard white-Baird, ordinary, 62. 11 per cent, unquoted; 12 per cent, 62 1/2; 13 per cent, 65 1/2; 14 per cent, 67 1/2.
Today's car receipts: Wheat, 8; barley, 1; flour, 8; corn, 2; oats, 1; hay, 4; millfeed, 3.

Chicago Wheat

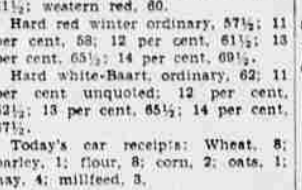
CHICAGO, Sept. 20.—(AP)—Wheat: Open High Low Close Sept. 64 64 63 1/4 63 1/4 Dec 66 66 65 1/4 65 1/4 March 68 68 67 1/4 67 1/4 May 70 70 69 1/4 69 1/4

Wall St. Report

NEW YORK, Sept. 20.—(AP)—Sabre-rattling in Europe sounded less menacing to Wall Street today and the stock market took courage to extend its recovery more briskly.
Gains of 1 to 4 points were posted throughout the list in lively forenoon buying spurts, particularly at the opening. The forward march halted after midday for a time, but was resumed again toward the finish.
Markets generally emerged further from the wraps of a bear. Cotton was up around \$1 a bale at one time and bonds, notably U. S. treasury issues, rallied nimbly with stocks.
Today's closing prices for 32 selected stocks follow:
Al. Chem. & Dye 17 1/2
Am. Can. 35 1/2
Am. & Pgn. Dow 31
A. T. & T. 141
A. N. C. 33 1/2
Atch. T. & S. F. 33
Bendix Avia. 20 1/2
Beth. Steel 57 1/2
Caterpillar Tract. 47 1/2
Chrysler 70 1/2
Com. Sav. 9 1/2
Curtis-Wright 4 1/2
DuPont 103
Gen. Elec. 48 1/2
Gen. Motors 34 1/2
Gen. Foods 15 1/2
Int. Harvst. 59 1/2
I. T. & T. 7 1/2
Johns-Man. 97
Monty Ward 46 1/2
North Amer. 18 1/2
Phillips (J. C.) 39 1/2
Phenyl Pk. 89 1/2
Radio 6 1/2
Soc. Pac. 15 1/2
Std. Brands 7 1/2
St. Oil Cal 29 1/2
St. Oil N. J. 53 1/2
St. Pet. 37 1/2
Union Carb. 82 1/2
Unit. Aircraft 25 1/2
U. S. Steel 56 1/2

Sport Graphs

Billy Hulen says:
Tigers May Add Weed and Eugene To 1938 Schedule
Hurler, it may not be such a skimpy football season for Medford fans after all. In fact, this 1938 campaign may develop into one of the best in years.
With the Black Tornado playing five home games instead of only three, as the home schedule now calls for.
Red-hot negotiations are under way between Coach Bill Bowerman of the locals and Coach Fritz Kramer of Eugene high's mighty Axe men for a clash here November 4, and the last word from the upstate school was that everything was settled except for financial terms. Although the game isn't definitely slated, it can be practically assured that it will be before the week is out. Eugene wants to play and so does Medford, and when they get together on money matters that's all there will be to it.
As for that open Armistice day date, it looks like it will be filled by that later-passing, colorful Weed, Calif. high school aggregation, a club that went through the 1937 season undefeated, untied and unscorred upon, and that had its goal line crossed for the first time in two years Friday night when it defeated Ashland, 13 to 0. Head Man Bowerman accepted the offer of the Craterian, the offering dramatic picture of our times, with Tyrone Power, Alice Faye and Don Ameche the principal figures in the anciently told romance.
Alexander's Ragtime Band, Romaine Violin, Everybody's Doin' It Now, 1911; When the Midnight Choo-Choo Leaves For Alabama, When I Lost You, In My Heart, 1912; That International Rag, 1913; This Is The Life, 1914; For Your Country and My Country, 1917; In The Y.M.C.A. Oh, How I Hate To Get Up in The Morning, We're On Our Way To France, 1918; A Pretty Girl is Like a Melody, 1919; Say It With Music, Everybody Step, 1921; Some Sunny Day, Pack Up Your Sins and Go To The Devil, 1922; What'll I Do, Lazy, 1924; All Alone, 1924; Remember, 1925; Blue Skies, 1927; Marie, 1928; How Wide, Easter Parade, 1928; Check To Check, 1935; and the two new hits, Now It Can Be Told, and My Walking Stick, 1938.



November 4, and the last word from the upstate school was that everything was settled except for financial terms. Although the game isn't definitely slated, it can be practically assured that it will be before the week is out. Eugene wants to play and so does Medford, and when they get together on money matters that's all there will be to it.

Matchless Melodies In Craterian's Show

Listed below are the 28 matchless melodies of Irving Berlin, together with the year of their inception, which compose the unforgettable musical score of Irving Berlin's "Alexander's Ragtime Band," now playing at the Craterian, the stirring dramatic picture of our times, with Tyrone Power, Alice Faye and Don Ameche the principal figures in the anciently told romance.
Alexander's Ragtime Band, Romaine Violin, Everybody's Doin' It Now, 1911; When the Midnight Choo-Choo Leaves For Alabama, When I Lost You, In My Heart, 1912; That International Rag, 1913; This Is The Life, 1914; For Your Country and My Country, 1917; In The Y.M.C.A. Oh, How I Hate To Get Up in The Morning, We're On Our Way To France, 1918; A Pretty Girl is Like a Melody, 1919; Say It With Music, Everybody Step, 1921; Some Sunny Day, Pack Up Your Sins and Go To The Devil, 1922; What'll I Do, Lazy, 1924; All Alone, 1924; Remember, 1925; Blue Skies, 1927; Marie, 1928; How Wide, Easter Parade, 1928; Check To Check, 1935; and the two new hits, Now It Can Be Told, and My Walking Stick, 1938.

HOPGROWERS ASK SURPLUS BE CUT

SALEM, Sept. 20.—(AP)—The Oregon hop growers advisory committee has, by resolution, petitioned the agricultural adjustment administration to undertake a further program for the removal and diversion of "surpluses of 1934 and older growth hops and of 1935 and 1936 crop hops."
The diversion would be through the Pacific coast hop stabilization corporation. The resolution mentions that the industry has in recent years suffered keenly from large surpluses "resulting from increased importations, increased plantings, and the failure of beer production to reach pre-war levels, and due also to the decrease of the quantity of hops used per barrel of beer, and the fall of the export market from an average of thirteen million pounds and one-half to approximately five and one-half million pounds because of hop marketing scheme, all of which are factors beyond the control of the American hop grower."

Portland Produce

PORTLAND, Sept. 20.—(AP)—Butter—Prints: A grade 28c lb. in parchment wrappers, 29c in cartons; B grade 28 1/2c lb. in parchment wrappers, 28 1/2c lb. in cartons.
BUTTERFAT—Portland delivery buying price: grade 26-26 1/2c; Portland delivery: B grade 1 1/2c lb. less; C grade 6c lb. less.
EGGS—Buying prices for wholesalers: Specials 33c doz.; extras 26c doz.; standards 25c doz.; extra mediums 24c doz.; undergrades 17c doz. Cheese, country meats, live poultry, turkeys unchanged.

Comes to Roxy

Grace Moore "lets her hair down" and swings her melodic way through "Comin' Round the Mountain" in "I'll Take Romance," at the Roxy theatre for tomorrow only.



In Mystery Hit

Paul Kelly and Constance Moore are featured in "The Missing Guest," mystery-thriller playing today and tomorrow at the Hialto theatre. "Speed To Burn," which introduces the Gambini family in the first of a series in a "world of sports and action" pictures, leads the twin bill with Michael Whalen, Lynn Bari and Henry Armetta—the latter as Papa Gambini.
Both features are Movie Quiz Contest pictures.

Too Late to Classify

FOR SALE—OR TRADE—Ford motor car, opposite Pierce's Greenhouse.
BARGAIN BUILDING MATERIALS—Lumber, sash and doors, roofing, flooring, ceilings, wall-boards, MUST REDUCE OUR STOCK NOW. Also a good wood-bearer for sale, nearly new. Medford Lumber Company, at 3rd and Fir streets.
FOR RENT—7-room house, 328 N. Riverside, inquire Phillips Auto Park, Aqueduct.
FOR SALE—Young Brown Swiss Bulls, Brown Swiss for more milk. Phipps Orchard, Phone 417.
ROOMS FOR RENT. Close in. 232 South Grape.
FOR SALE—4-room, modern house with large lot 50x330, small down payment. Balance like rent. 107 Kenwood St.
FOR SALE—Secondhand bed springs. Call at Hotel Medford.

Every Thrilling Moment Filled With Grand Entertainment!

MEET THE GAMBINIS: The screen's newest family with Henry Armetta as Papa Gambini!
"Speed to Burn" with MICHAEL WHALEN LYNN BARI
A RIOTOUS WHIRL OF MELODY and LAUGHTER WED. ONLY
MISS GRACE MOORE "I'll Take Romance" with Melvyn DOUGLAS Helen WESTLEY Stuart ERWIN
LAST TIMES TONIGHT: MCDONALD-EDDY "The Girl of the Golden West"

IRVING BERLIN'S ALEXANDER'S RAGTIME BAND Crowds, Crowds and still they come! ONLY FIVE MORE DAYS Positively Ends Saturday!
Tyrone Power • Alice Faye • Don Ameche
Shows 1:45-6:45-9:00 • 30c-40c-10c
CRATERIAN

STRIKE AND WAR CRISIS IRK PARIS

PARIS, Sept. 20.—(AP)—New uncertainty over the outcome of the Czechoslovak crisis today replaced the feeling in France that it was near solution through the simple process of giving way to Adolf Hitler's demands.
Diplomatic sources said France would have to fight alone if she refused to accept the Franco-British proposal for giving Germany the Sudeten areas, but uneasiness arose as reports flooded in from Europe's capitals.
Coincident with a rising tide of "shameful admissions" in the French press, Premier Daladier's government had disgraced the country by accepting Hitler's demands. Finance Minister Paul Marchandeau warned the nation against hoarding and thus embarrassing the public treasury.
This, with the unsettled strike of 175,000 building workers in the Paris region, disclosed the government was under pressure in both its domestic and foreign policy.



Matchless Melodies In Craterian's Show

Listed below are the 28 matchless melodies of Irving Berlin, together with the year of their inception, which compose the unforgettable musical score of Irving Berlin's "Alexander's Ragtime Band," now playing at the Craterian, the stirring dramatic picture of our times, with Tyrone Power, Alice Faye and Don Ameche the principal figures in the anciently told romance.
Alexander's Ragtime Band, Romaine Violin, Everybody's Doin' It Now, 1911; When the Midnight Choo-Choo Leaves For Alabama, When I Lost You, In My Heart, 1912; That International Rag, 1913; This Is The Life, 1914; For Your Country and My Country, 1917; In The Y.M.C.A. Oh, How I Hate To Get Up in The Morning, We're On Our Way To France, 1918; A Pretty Girl is Like a Melody, 1919; Say It With Music, Everybody Step, 1921; Some Sunny Day, Pack Up Your Sins and Go To The Devil, 1922; What'll I Do, Lazy, 1924; All Alone, 1924; Remember, 1925; Blue Skies, 1927; Marie, 1928; How Wide, Easter Parade, 1928; Check To Check, 1935; and the two new hits, Now It Can Be Told, and My Walking Stick, 1938.

Too Late to Classify

FOR SALE—OR TRADE—Ford motor car, opposite Pierce's Greenhouse.
BARGAIN BUILDING MATERIALS—Lumber, sash and doors, roofing, flooring, ceilings, wall-boards, MUST REDUCE OUR STOCK NOW. Also a good wood-bearer for sale, nearly new. Medford Lumber Company, at 3rd and Fir streets.
FOR RENT—7-room house, 328 N. Riverside, inquire Phillips Auto Park, Aqueduct.
FOR SALE—Young Brown Swiss Bulls, Brown Swiss for more milk. Phipps Orchard, Phone 417.
ROOMS FOR RENT. Close in. 232 South Grape.
FOR SALE—4-room, modern house with large lot 50x330, small down payment. Balance like rent. 107 Kenwood St.
FOR SALE—Secondhand bed springs. Call at Hotel Medford.

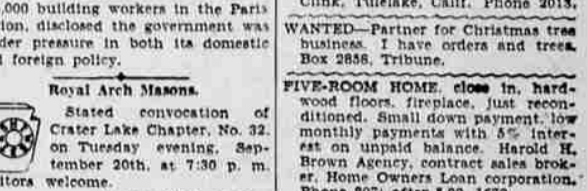
Every Thrilling Moment Filled With Grand Entertainment!

MEET THE GAMBINIS: The screen's newest family with Henry Armetta as Papa Gambini!
"Speed to Burn" with MICHAEL WHALEN LYNN BARI
A RIOTOUS WHIRL OF MELODY and LAUGHTER WED. ONLY
MISS GRACE MOORE "I'll Take Romance" with Melvyn DOUGLAS Helen WESTLEY Stuart ERWIN
LAST TIMES TONIGHT: MCDONALD-EDDY "The Girl of the Golden West"

IRVING BERLIN'S ALEXANDER'S RAGTIME BAND Crowds, Crowds and still they come! ONLY FIVE MORE DAYS Positively Ends Saturday!
Tyrone Power • Alice Faye • Don Ameche
Shows 1:45-6:45-9:00 • 30c-40c-10c
CRATERIAN

STRIKE AND WAR CRISIS IRK PARIS

PARIS, Sept. 20.—(AP)—New uncertainty over the outcome of the Czechoslovak crisis today replaced the feeling in France that it was near solution through the simple process of giving way to Adolf Hitler's demands.
Diplomatic sources said France would have to fight alone if she refused to accept the Franco-British proposal for giving Germany the Sudeten areas, but uneasiness arose as reports flooded in from Europe's capitals.
Coincident with a rising tide of "shameful admissions" in the French press, Premier Daladier's government had disgraced the country by accepting Hitler's demands. Finance Minister Paul Marchandeau warned the nation against hoarding and thus embarrassing the public treasury.
This, with the unsettled strike of 175,000 building workers in the Paris region, disclosed the government was under pressure in both its domestic and foreign policy.



Matchless Melodies In Craterian's Show

Listed below are the 28 matchless melodies of Irving Berlin, together with the year of their inception, which compose the unforgettable musical score of Irving Berlin's "Alexander's Ragtime Band," now playing at the Craterian, the stirring dramatic picture of our times, with Tyrone Power, Alice Faye and Don Ameche the principal figures in the anciently told romance.
Alexander's Ragtime Band, Romaine Violin, Everybody's Doin' It Now, 1911; When the Midnight Choo-Choo Leaves For Alabama, When I Lost You, In My Heart, 1912; That International Rag, 1913; This Is The Life, 1914; For Your Country and My Country, 1917; In The Y.M.C.A. Oh, How I Hate To Get Up in The Morning, We're On Our Way To France, 1918; A Pretty Girl is Like a Melody, 1919; Say It With Music, Everybody Step, 1921; Some Sunny Day, Pack Up Your Sins and Go To The Devil, 1922; What'll I Do, Lazy, 1924; All Alone, 1924; Remember, 1925; Blue Skies, 1927; Marie, 1928; How Wide, Easter Parade, 1928; Check To Check, 1935; and the two new hits, Now It Can Be Told, and My Walking Stick, 1938.

Too Late to Classify

FOR SALE—OR TRADE—Ford motor car, opposite Pierce's Greenhouse.
BARGAIN BUILDING MATERIALS—Lumber, sash and doors, roofing, flooring, ceilings, wall-boards, MUST REDUCE OUR STOCK NOW. Also a good wood-bearer for sale, nearly new. Medford Lumber Company, at 3rd and Fir streets.
FOR RENT—7-room house, 328 N. Riverside, inquire Phillips Auto Park, Aqueduct.
FOR SALE—Young Brown Swiss Bulls, Brown Swiss for more milk. Phipps Orchard, Phone 417.
ROOMS FOR RENT. Close in. 232 South Grape.
FOR SALE—4-room, modern house with large lot 50x330, small down payment. Balance like rent. 107 Kenwood St.
FOR SALE—Secondhand bed springs. Call at Hotel Medford.

Every Thrilling Moment Filled With Grand Entertainment!

MEET THE GAMBINIS: The screen's newest family with Henry Armetta as Papa Gambini!
"Speed to Burn" with MICHAEL WHALEN LYNN BARI
A RIOTOUS WHIRL OF MELODY and LAUGHTER WED. ONLY
MISS GRACE MOORE "I'll Take Romance" with Melvyn DOUGLAS Helen WESTLEY Stuart ERWIN
LAST TIMES TONIGHT: MCDONALD-EDDY "The Girl of the Golden West"

IRVING BERLIN'S ALEXANDER'S RAGTIME BAND Crowds, Crowds and still they come! ONLY FIVE MORE DAYS Positively Ends Saturday!
Tyrone Power • Alice Faye • Don Ameche
Shows 1:45-6:45-9:00 • 30c-40c-10c
CRATERIAN

LOST—Top for fountain pen, gold trimmed. Keepsake. Reward. Phone 445-Z.
FOR SALE—Secondhand clothes. Formal, dresses and suits, \$2.00 to \$10.00. Size 14. Call 764, ask for Miss Boxer, 8:00 a. m. to 6:00 p. m.
FOR RENT—4-room house, 2 bedrooms. New condition. At 1125 W. 9th. Also 3-room house at 1038 W. 10th. Phone C. A. De Voe evenings.
FOR RENT—Six-room house, sleeping porch, for \$20 month advance. Water paid. Adults only. No dogs. Phone 216, 328 So. Hamilton.
FOR SALE—A good home located close to school. Nicely furnished. \$2,250, easy terms. Phone 1971-Z.
FOR SALE—3 cows, 1 fresh and 2 coming fresh. Gus Zeman, 14 miles west on Benson lane, Talent.
DRIVING TO WENATCHEE, Washington, Wednesday, two passengers to share expenses. Call 335 No. Central, 6-7 p. m.
FOR RENT—Furnished house No. 3 Everett court, attractive and clean. Adults only. Phone 238.
FOR SALE—75 tons first class alfalfa hay, \$9 ton baled at the ranch. Reduction on large order. W. L. Clark, Tulelake, Calif. Phone 2019, Box 2666, Tribune.
WANTED—Partner for Christmas tree business. I have orders and trees. Box 2666, Tribune.
FIVE-ROOM HOME close in, hardwood floors, fireplace, just reconditioned. Small down payment, low monthly payments with 5% interest on unpaid balance. Harold H. Brown Agency, contract sales broker, 801 Commercial, Phone 807; after 5:00, 1670.
ATTENTION TURKEY GROWERS A meeting of Turkey Growers of Southern Oregon will be held at the courthouse at Grants Pass, Oregon, Friday, September 23rd at 2 o'clock p. m. R. G. Neidermeyer, president of the California Turkey Growers association will be the principal speaker and will discuss cooperative marketing, market conditions and the advantages of killing and dressing plants.
ANNOUNCEMENT—We will open the livestock sale on Saturday, September 24th. Have a good consignment of dairy cows for this sale. Parties having livestock to consign call 831-3 for property listing. Always attend the auction. Southern Oregon Livestock Auction Co., Col. A. H. Dudley, auctioneer.
Attractive 3-bedroom cottage in excellent condition, close in, corner lot, lots of shrubs and flowers. Owner leaving town.
Also 10 acres, 7 acres Medford irrigation, balance free water. Good barn, small house with city water and lights. Fenced and cross fenced, clover, etc. Close in. Sell, trade or rent.
THE REAL ESTATE EXCHANGE No. 7 N. Bartlett St. Phone 1496 or 1548-R.
FOR SALE—Hay, 810 ton. Hawley Young, Beall lane.
FIRST CLASS REFINISHING guaranteed. Mitchell Auto Beauty Shop.