

TOURIST INCREASE FOR UPPER ROGUE TALKED AT MEET

Chamber Directors and Resort Owners Gather at Prospect — Gates Urges New Advertising Angle

Directors of the Jackson County Chamber of Commerce met at Grieve's resort at Prospect Thursday noon, and in an open air meeting under the trees, discussed with upper Rogue river resort owners the problem of how to increase tourist travel over the Crater Lake highway. Fifty persons were present. Earl Ulrich of Prospect was the host director. Eugene Thordike, president of the chamber of commerce acted as chairman.

Need of advertising different from that used by other sections in advertising the area's recreational points, and cooperation between resort owners and the Jackson County Chamber of Commerce, was urged by W. A. Gates, Medford, main speaker of the occasion.

All Use Same Language It was pointed out by Mr. Gates, that practically every section "west of the crest of the Rockies uses the same language in describing the country, and sets forth no new vantage points. The speaker declared there were many admirable points which could be stressed, and new spots and pleasures created for tourists in this section. The joys of a middle western tourist sleeping in the upper river section, far from the heat of his home, lulled by the songs of the Rogue, and the sigh of the wind in the pines, was named as the unsung glory of the section.

After a tourist has driven 1,800 miles by auto, he is in a mood for new things, the speaker said, and the problem is to find amusements that will cause the tourist to linger longer. He suggested a comprehensive fishing map. The cooperation of the chamber of commerce was secured.

Competition Keen C. M. Hurd, chairman of a tourist committee read a special report, showing competition was keen these days, and the need of meeting it was necessary.

Al Gilhouse, proprietor of the Rogue River resort near Trall, said most of the tourist business this year had been "repeat business," or people who had been here before, and there was comparatively little new business. He said he had hired a fishing guide, who proved to tourists there were fish in Rogue river. He said he had found a guide practical, and advised the tourists to linger.

Other speakers suggested the use of pack trains to take tourists to out of the way spots in the high hills away from the beaten path. H. C. Obye of the forest service, said the Skyline Trail trip, one of the best scenic journeys, was comparatively unknown and had few visitors. He thought it might be developed as a horseback trip. He further stated the forest service was doing what it could to increase tourist travel.

C. Axtel informed the gathering he was establishing a pack train string, and was prepared to take tourists to points in the forests. He said by next year he would have regular trips of two, three, or four days, or as long as the guests wanted to stay.

Need More Effort G. H. Gunther of Portland, publisher of the "Adventures in Oregon" booklet, stressed the need of Oregon resort owners taking steps to gain more of the tourist trade.

It was admitted, this year had been a poor season on the Crater Lake highway, and some of the decline was attributed to the wide publicity given forest fires which raged over the northwest in July and early August. One resort owner said travel had fallen off as the news spread, and that tourists feared they would be drafted for firefighting service.

As a result of the session it was decided, the upper Rogue tourist centers, appoint one of their number, to meet with the chamber of commerce soon and work out a program for next year, and for this season, if possible.

A mixed quartet, under direction of Mrs. Elsie Carlton Strang, and composed of the Misses Mary Ann Gates and Margaret Luman, and the Siverson brothers, rendered four pleasing numbers during the meal. A vote of praise was given Mrs. Mary Grieve for the excellence of the fried chicken, and accessories.

"Princess Jane Rides the Station"



A "Queen's attendant" at the annual Pendleton Round-up must be able to ride her horse anywhere. When word went out that the new four-color prints of Aneroid Falls on the Wallowa River were ready for distribution by Standard Stations and Standard Oil Dealers, Miss Jane Hawkins headed her calico horse, "Tarzan," to the nearest station. Miss Hawkins will be Pendleton's princess and a queen's attendant at the big Pendleton Round-up, Sept. 15, 16, 17. A senior at Helix high school and a crack basketball player, she has ridden horses since she was three years old. She thinks the series of Oregon scenic pictures now being given away free by Standard Oil Company a great tribute to her native Oregon. The print of Aneroid Falls is the third in the series.

COUPLE ON RELIEF BALK DEPORTATION

PORTLAND, Sept. 2.—(AP)—Robert Devoe and his wife today defied an attempt of relief authorities to send them and their crippled two-year-old baby back to Ohio.

"We'll go hungry first," they declared fervently. They were told last March to take their baby to a mild climate with plenty of sunshine if they wanted to see her live and walk.

They stayed for the coast carrying the baby and hitch-hiked it in six months. Devoe stopped now and then when he could get work.

"Barbara Jane is better already," the mother said. "She can move her legs a little and can almost stand up. It's been hard going but she has had sunshine and she is responding and we're not going back. She can get well in Oregon and we're staying here whether Bob and I eat or not."

A poultry worker, Devoe has been unable to find employment and the relief administration wants to send them back to Cleveland.

Lone Pine School Will Open Monday

Lone Pine school will open Monday September 5. Registration will be from 9 to 11 a. m. on that date.

Many improvements have been made in the school plant during the summer. Two rooms have been newly equipped, one as a class room, and the other as a nurse's room. Preparation for a kitchen and hot lunch room was also begun. Improvements and additions have been made in playground equipment and school grounds.

Bolt Burns Mill BLAINE, Wash., Sept. 2.—(AP)—The main structure of the peaport cooperative mill was destroyed by fire shortly after 8 o'clock this morning. A flash of lightning was believed to have started the fire. The kilns and shingles were saved.

Use Mail Tribune Want Ads

Meteorological Report

September 2

Medford and vicinity: Fair tonight and Saturday; not much change in temperature.

Generally fair tonight and Saturday, but considerable low clouds in west portion and fog on the coast; gentle southerly wind off the coast.

Local Data

Temperature a year ago today: Highest, 88; lowest, 48.

Total monthly precipitation, none.

Deficiency for the month 61 inch.

Total precipitation since September 1, 1938, none.

Deficiency for the season 51 inch.

Relative humidity at 5 p. m. yesterday, 22 per cent; 5 a. m. today, 79 per cent.

Tomorrow: Sunrise, 5:39 a. m. Sunset, 6:40 p. m.

Observations Taken at 5 a. m., 120 Meridian Time.

CITY	High Temp Part 24 Hours	Low Temp Part 24 Hours	Precipitation Part 24 Hours	Wind	Weather
Boise	92	52			Clear
Boston	82	56			P. Cdy.
Chicago	72	60			Cloudy
Denver	72	56	.18		Cloudy
Eureka	62	54			Cloudy
Helena	82	50			Clear
Los Angeles	88	60			Clear
MEDFORD	80	56			Clear
New York	82	58			Cloudy
Omaha	88	66			Cloudy
Phoenix	90	60			Clear
Portland	82	58			Cloudy
Reno	92	48			Clear
Roseburg	84	54			Clear
Salt Lake	84	60			Clear
Seattle	62	56			Cloudy
San Francisco	74	56	.02		Cloudy
Spokane	96	68			Clear
Washington, D.C.	84	62			Clear
Yakima	94	72			Cloudy

Schools at Talent Open September 12

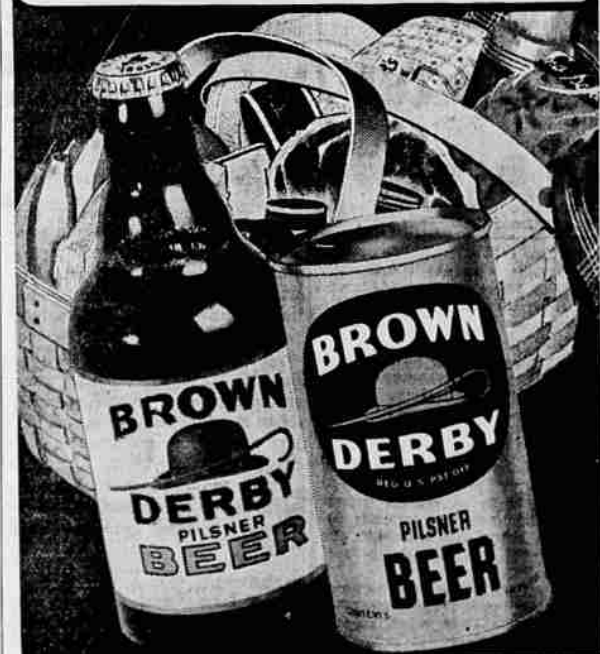
TALENT, Sept. 2.—(Sp.)—Talent schools will open September 12, and not September 6, as previously reported. Principal Roy B. Parr announced today. All freshmen and high school students who have not attended Talent schools heretofore are requested to register September 6, from 1 to 3 p. m. Other high school students who wish to make out their programs may do so at that time.

Award K. F. Contract SALEM, Sept. 2.—(AP)—Contract for construction of a highway build-

ing in Klamath Falls was awarded today to Angelo Doveri, Klamath Falls, on a bid of \$19,558. The contract also includes landscaping.

Closing time for Too Late to Classify Ads is 1:30 p. m.

For that WEEK-END PICNIC —stock up on BROWN DERBY



Choice of cans or bottles in convenient containers... Let us put a carton in your car!

Get it at Safeway

INLAID LINOFLOR REDUCED!

5q. Yard **75c**

156 square yards of our 139 Inlaid Linoflor to go at this special price.

True inlaid surface, cork and linseed oil composition plus a heavy back. Will last for years. Allover marbled and tile patterns. Resilient, sound absorbing.

PERMANENT FLOOR BEAUTY PRICED LOW

Enlarged section showing how inlaid colors go through to back.

MONTGOMERY WARD

117 So. Central Telephone 285

ATTENTION CANNERS

Use the Beautiful BEST FOODS CRYSTAL JARS for CANNING.

Special Self Sealing Lids Now on Sale

At Your Grocer

COME DIRECT to LUMANS - the HOUSE of ALL FOODS - SAVE TIME and MONEY

FOOD SPECIALS

SATURDAY and MONDAY

Here we are again with a list of fine special, for your week-end shopping. You will find it pays to come direct to Luman's for Foods. It means a big saving of time. Everything in the best of Foods is here for you.

ROYAL GELATIN

Each flavor tastes like the real fruit. Add it to your list today.

Each 5c

CORN FLAKES

(Albers') Fresh and Crisp

Each 5c

MECO PEAS

Large No. 2 size tins Keep a good supply handy

Each 10c

LIBBY'S No. 1 MILK

quality
4 Tall Cans **25c**
Case 48 Tall cans **\$2.88**

LOWEST PRICES ON FLOUR IN YEARS

A good time to stock up at these prices

Klamath Bouquet 49 lb. \$1.09

Kitchen Queen 49 lb. sack \$1.29

Moon Brand 49 lb. sack \$1.19

COFFEE

Chase & Sanborn dated

lb. 25c

A high quality coffee at a very low price. Try it today.

SAVE 1/2 ON SILK STOCKINGS

Full-fashioned, 3-thread, chiffon, pure silk stockings, in Sun-tone—Fashion's all-purpose shade, made by the famous Cannon Mills, to retail at \$1.00... **YOURS with 3 Woodbury Soap wrappers and 50¢ in coin (no stamps) for every pair you order.** Mail wrappers, coin and stockings due to John H. Woodbury, Inc., Box No. 66, Cincinnati, O. Limited Offer! Order your Woodbury Facial Soap today!

Woodbury Facial Soap 3 Cakes 25¢

KRAFTS MIRACLE WHIP

Americans' favorite salad dressing and Sandwich Spread

Qt. jar 34c - pt. jar 22c

KRAFTS CHEESE

IN WOODEN BOXES AMERICAN OR BRICK

2 lb. loaf 49c

CREAM CHEESE PHILADELPHIA

2 Packages for 15c

KRAFTS Elkhorn Cheese lb. 17c

Klamath Potatoes

NETTED GEMS

100 pound sack No. 1s \$1.30
25 pound sack No. 1s .39c

QUALITY PORK SPECIALS SATURDAY

Pork Roasts, legs or loin from young grain fed pigs, lb. 20c

Fresh Side Pork, lb. 15c

T-bone or Sirloin, choice cuts, lb. 20c

Prime Beef Roasts, boned & tied, lb. 20c

Spring Lamb, No. 1 grade, lb. 22c

Choice young fat hens, lb. 20c

R.I. Red Fryers, milk & corn fed, lb. 25c

Swiss Steaks, cut from prime young tender beef, lb. 20c

Veal Roasts, choice shoulder cuts, lb. 15c

Loin Veal Steaks, lb. 20c

Fresh ground Hamburger . . . 2 lbs. 25c

Eastern sugar cured Bacon, lb. 25c

Home rendered Lard 4 lbs. 50c

Hams, small lean, No. 1 quality, whole or half, lb. 27c

NUT MARGERINE . . 2 lbs. 25c

George Alford Fine Flavor Peaches

Albertas, Hales & Muirs per crate 55c

Buy These Fine Flavor Peaches for Canning

LUMAN'S Bakery Specials SATURDAY

HOLIDAY SPECIALS

Cakes—A Wide Variety each 59c

SANDWICH BREADS loaf 10c, 12c, 15c

COOKIES—15c, 19c, 23c doz.

Sandwich Buns and Weiner Buns 22c dozen

Fruits and Vegetables! Local SATURDAY

Ice Cold Watermelons lb. 1 1/2c

Local Cantaloupes, Ice Cold GRAPEFRUIT Large size 6 for 25c

Get Your Canning Peaches Now Local String Beans 3 lb. 10c

TOMATOES 3 lbs. . . 10c

Local Home Grown Tomatoes

All fresh, crisp, tender local bunch Vegetables 3 for 10¢

LUMAN BROTHERS

BIG FOOD CENTER

MAIN AND BARTLETT STS.

Telephone 353 or 354—4 Free Deliveries Daily—Telephone Your Order