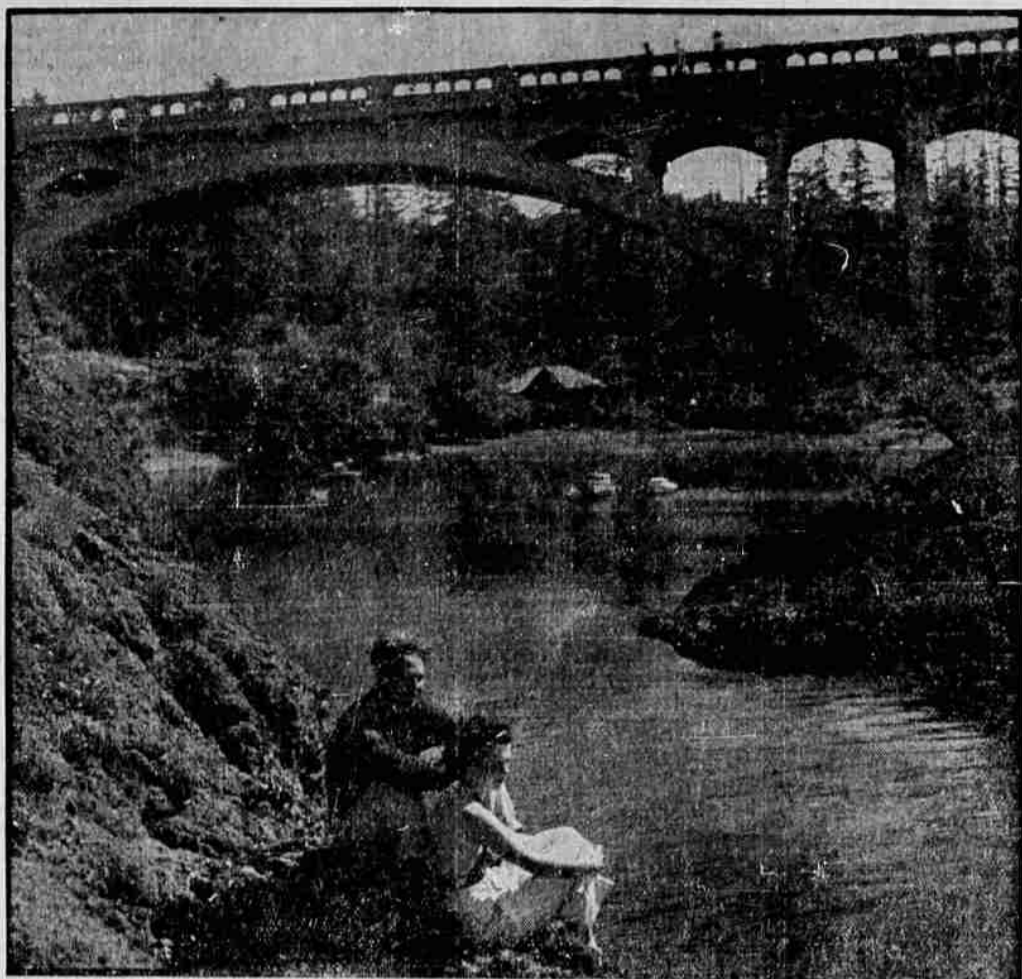


Down the Oregon Coast

The calm shelter of Depoe bay offers remarkable contrast to the booming surf just outside its narrow entrance



By Vinton Hall
Public Relations Director, Oregon State Motor Association

THE story of a trip down the Oregon coast highway from Astoria to the California line can hardly be classed as a motor-log—it's a dozen motorlogs rolled into one. For along the 395-mile extent of Oregon's coast line are enough attractions to provide recreation and entertainment not only for the week-end motorist and short-term vacationist but even for the more fortunate who may be able to spend several weeks or the entire summer exploring and visiting the lesser known as well as the more famous places.

Of course, the route may be negotiated either from south to north or vice versa. Since we are starting from Portland, we'll go to Astoria, then turn the Oregonian-Oregon State Motor association travel car southward with the long expanse of ocean-bordered highway before us. Before leaving Astoria, though, let's spend a few minutes in this city of so much historical and industrial significance.

Headed south about this time of year, it's difficult to miss the Golden trail, a section of the main coast highway with dazzling borders of Scotch broom. Rolling on to Seaside, Oregon's most famous bathing beach, where the main street heads straight for the ocean. For diversion, park the car and take a walk along the two-mile concrete promenade along the ocean front.

Brief Motorlog of 395-Mile Route From Astoria to California Line

If you are going to make this motorlog complete, stop in and watch the process from the cow (that put the moo in Tillamook) to the sandwich.

Sixty-three miles further south, after passing several of the coast's finest resorts and the junction of the main road from Portland, you'll reach Depoe bay, a spot of unique interest and one where, if it's your lucky day, you may spot seals or perhaps a whale. Depoe bay residents can show you a little trail that leads to Pirates' cove and point out the underground lake and caves. They'll point to Spouting Horn, where the crashing breakers shoot foam high into the air.

Up it's time for lunch; stock up at Depoe bay and drive two miles farther south to Whale cove, one of the coast's many sheltered and pleasant little inlets. Stroll down from the highway and prop your back against a driftwood log at the mouth of one of the shallow caverns—and eat. The constant and lulling roar of the sea, the swaying trees and the warm, quiet air in the cove will send you off on a brief nap in no time.

Then, of course, you are ready for a spectacular view, perhaps the most thrilling of the entire coast. It's at Otter Crest, only three or four miles south, purchased by the state as a park because of the scenic qualities. Near by is a lookout and observatory, from which can be seen one-fourth of the 401-mile coast line.

here, as well as at Depoe bay, Reedsport and Coos bay, lend a touch of color that should not be overlooked. In Newport, too, is a natatorium, and the cottages and summer homes of a typical beach resort city.

Farther south, is Seal Rock state park, another section of the Oregon coast adopted by the state because of its restful beauty. Off the shore may be seen Seal rocks, where formerly keen eyes could detect the sea mammals and where now may be seen the rookeries of marine wild-fowl.

Cape Perpetua, one notch farther in this motorlog, affords another chance for a scenic view. But perhaps you should move on to Sea Lion cove, where Brigham brings his fur-clad wives. Unique in the term for these fascinating caves, chiseled from Sea Lion point by the battering waves of centuries. Accessible by an easy trail and spectacular stairways, upon payment of a small fee, the caves may reveal a herd of sea lions playing, splashing and loafing. Here is the only known sea lion rookery on the mainland, and yearly "Old Brigham" herd bull, brings back his congregation for the summer season.

Next, en route south, you reach a series of fresh-water lakes, strung to the left of the highway with the ocean on the right. It affords any relief that you may need from the sight of the sea, for in this area from Florence to Coos bay you may even imagine that you are high in the mountains of central Oregon. Woahind, Siltcoos, Tahkenitch and Ten-mile lakes—all could be called ideal recreation spots. With outlets to the sea, fish life is replenished from the ocean. Furthermore, they are stocked with bass, crappie, calico bass and perch, and resorts can provide virtually every form of entertainment desired.

Back to the ocean. Coos bay, the site of North Bend and Marshfield, is an important lum-

bering, manufacturing, fishing and shipping center, with a multitude of points for the travel agenda.

In 1938, of course, you read about the Bandon fire that nearly swept this rugged coast city off the map. At the site of the famous holocaust, 37 miles south of Coos bay, you will find a new city rising.

Forty-six miles south of Bandon is a place of considerable geographic importance, and one involved somewhat in a controversy of scientists. It is Cape Blanco, westernmost point in Oregon, and claimed by some to reach farther west than any other point in the United States.

Just below Cape Blanco is another geographic feature annexed as a park by Oregon. It is Humburg mountain, interesting not only because of improved picnic facilities but because of its historic background.

Southward, beyond Gold Beach and the mouth of the famous fishing stream, Rogue river, remains one more opportunity for spectacular view. On top of Pistol River mountain, at Carpenterville, is the highest point on the Oregon coast highway. From this 1700-foot lookout you may view California's Mount Shasta, and in another direction look 100 miles out to sea.

Brookings, seven miles north of the California line, is the last item on this motorlog of Oregon's 401-mile marine drive.

Eight miles from Brookings you will find the only accessible grove of big redwood trees in Oregon—60 acres of them. En route and adjoining you also will see some of the world's highest myrtle trees, an exclusive product of southwestern Oregon and prized by makers of wood novelties.

With this you've completed a thorough trip of a great recreational highway. Of course, there were the beautiful coast highway bridges, completed in 1936 at a cost of well over \$5,000,000. Then, too, there were dozens of spots that might have been visited, but they must serve as a reason for another drive and another day.

JACKSON COUNTY CHILDREN GIVEN CLINIC BENEFIT

Medical Society and Health Association Secure Services of Noted Experts for Annual Examinations

One of the most successful clinics in the history of health work in Jackson county was conducted May 25 and 26 at the Alex Sparrow Memorial in the Jackson county court house by the crippled children's division of the state relief committee at the invitation of the Jackson County Medical society and the Jackson County Public Health association.

Dr. Leo S. Lucas, orthopedic surgeon of the Shirine hospital, substituting for Dr. Richard B. Dillehant, who was unable to attend, saw 104 children. Dr. Henry Dixon of the Oregon Medical school, who is conducting child guidance clinics throughout the state, interviewed 61. Dr. Lucas was assisted by Dr. John Abele, director of the state program for handicapped children, the staff this time exceeding that which has come to Medford in all previous years for the annual clinic.

Mr. Paulson, head of vocational guidance work in Oregon, also attended the clinic for the first time and interviewed handicapped children, who are now over 14 years of age, regarding vocational work and professions suitable to their qualifications. Through advice he endeavor to direct the individual's choice of high school subjects with consider-

ation of his future place in society. Miss Alyce Bloom, state nursing supervisor in the crippled children's division, and her assistant, Miss Simpson, also participated in the clinic. All were assisted by the nurses of the Jackson county health department and Mrs. Una B. Inch, rural school supervisor. Dr. G. C. Bellinger of the Oregon tuberculosis sanitarium at Salem, conducted the annual chest clinic for Jackson county on May 17. He was unable to spend more than one day in Medford this month so has promised to return for another clinic in the fall. It was announced by the health department yesterday.

MRS. MARY STEVENS DIES IN RURAL HOME

Mrs. Mary Stevens, native of Jackson county, died yesterday afternoon at her home on route 3 just east of Medford. She had been ill but a short time. She was born at Ruch 74 years ago.

Funeral services will be held in the Conger chapel at 2:30 p. m. Wednesday. Interment will take place in the Log Town cemetery at Ruch. Funeral arrangements were being completed today and a full obituary will be published tomorrow.

Tavern Burns

GRESHAM, May 30.—(AP)—Damage estimated at \$18,000 resulted from a fire which destroyed the Cherry Place, a dine and dance tavern a mile east of Troutdale early Sunday. The attempt of the Gresham fire department to curb the blaze was handicapped by lack of water.

Gambling Ban Defeated

PORTLAND, May 30.—(AP)—An anti-gambling ordinance sponsored by City Commissioner J. E. Bennett was defeated, 40,614 to 28,287, an official count of the May 20 election in the city revealed.

REV. J. P. BRAY IN BEAL LANE CRASH

Cars driven by the Rev. J. P. Bray of Medford and Marion R. Roberts of route 1 collided at the intersection of Beal lane and the

Jacksonville-Central Point highway this morning, the accident inflicting minor injuries to Ernest Bingham, a passenger in the Roberts machine. Roberts was arrested by state police and will appear in justice of the peace court tomorrow charged with driving a vehicle without an operator's license. The Roberts machine was traveling east on Beal lane and the Rev. Bray was driving north on the Jacksonville-Central Point highway when the mishap occurred.

Light as a Snowflake

So LIGHT—so delicately flavored—so appealing to the taste is this Old Bohemian Lager that it is receiving the enthusiastic endorsement of those discriminating drinkers who enjoy—who really appreciate fine beer.

Bohemian Club
Light Export Lager

McDonald Candy Co., Distributor. Phone 50

FEAR MENINGITIS FOR SIT DOWNER

VANCOUVER, B. C., May 30. (AP)—Suggestion the British Columbia legislature held an emergency session to deal with the unemployment problem came from the Cooperative Commonwealth Federation today as more than 700 single unemployed completed eight days' peaceful occupation of two downtown buildings. As the jobless maintained possession of the ground-floor lobbies of the Central post office and the Civic Art gallery into which they marched a week ago Friday, the seven C. C. F. members of the provincial house circled representatives of the other parties. As the C. C. F. statement was being circulated, doctors in Vancouver suggested disease, not police strength,

might bring an end to the sit-down demonstration of unemployed who are demanding a federal-financed public works program. Dr. K. F. Brandon, city epidemiologist, said it was "an old public health fact" that when ever men are crowded together there was danger of an outbreak of cerebro-optical meningitis.

DOUGHERTY IS WINNER NATHAN BURKHAM PRIZE

EUGENE, May 30.—(AP)—A prize of \$75 went today to Nathan Cohan, Portland, and \$25 to William Dougherty, Medford, for first and second places in the annual Nathan Burkham memorial competition in law schools of the country. The University of Oregon students were among scores receiving honors.

Recover Body.

OREGON CITY, May 30.—(AP)—The body of Keith Pickering, 20, of Portland, who drowned in the Clackamas river May 17 when his canoe capsized near River Mill dam, was recovered yesterday two miles below the scene of the accident.

RADIO CLUB TO HOLD FIELD DEMONSTRATION

Rogue Valley Radio club will hold its second annual field day on top of Rocky Ann in Prescott park June 11 and 12. This year all portable equipment will be used to demonstrate what can be done by amateur radio operators under emergency conditions. Power will be generated on the premises. The program this year is more ambitious than that of the first field day held last year in Grants Pass city park. The public is invited to inspect the equipment and watch the amateurs at work.

667 WILL GRADUATE AT OREGON TONIGHT

EUGENE, May 30.—(AP)—Degrees will be granted to 667 seniors at the 61st commencement at the University of Oregon tonight in McArthur court. Dr. Donald M. Erb, University of Oregon president, is to be the commencement speaker, his topic being "the companionship of learning and life." The ceremony also will serve as the inauguration of the new university executive.

SAFETY for Your SAVINGS

JACKSON COUNTY FEDERAL SAVINGS & LOAN ASSOCIATION

126 EAST MAIN ST.

Hotel Hayward in LOS ANGELES

Single Rooms \$200 up
Double Rooms \$300 up

3 Minutes from Bus Stations
10 Minutes from R. R. Stations

Fireproof Garage in Connection
Autos Checked at the Door.

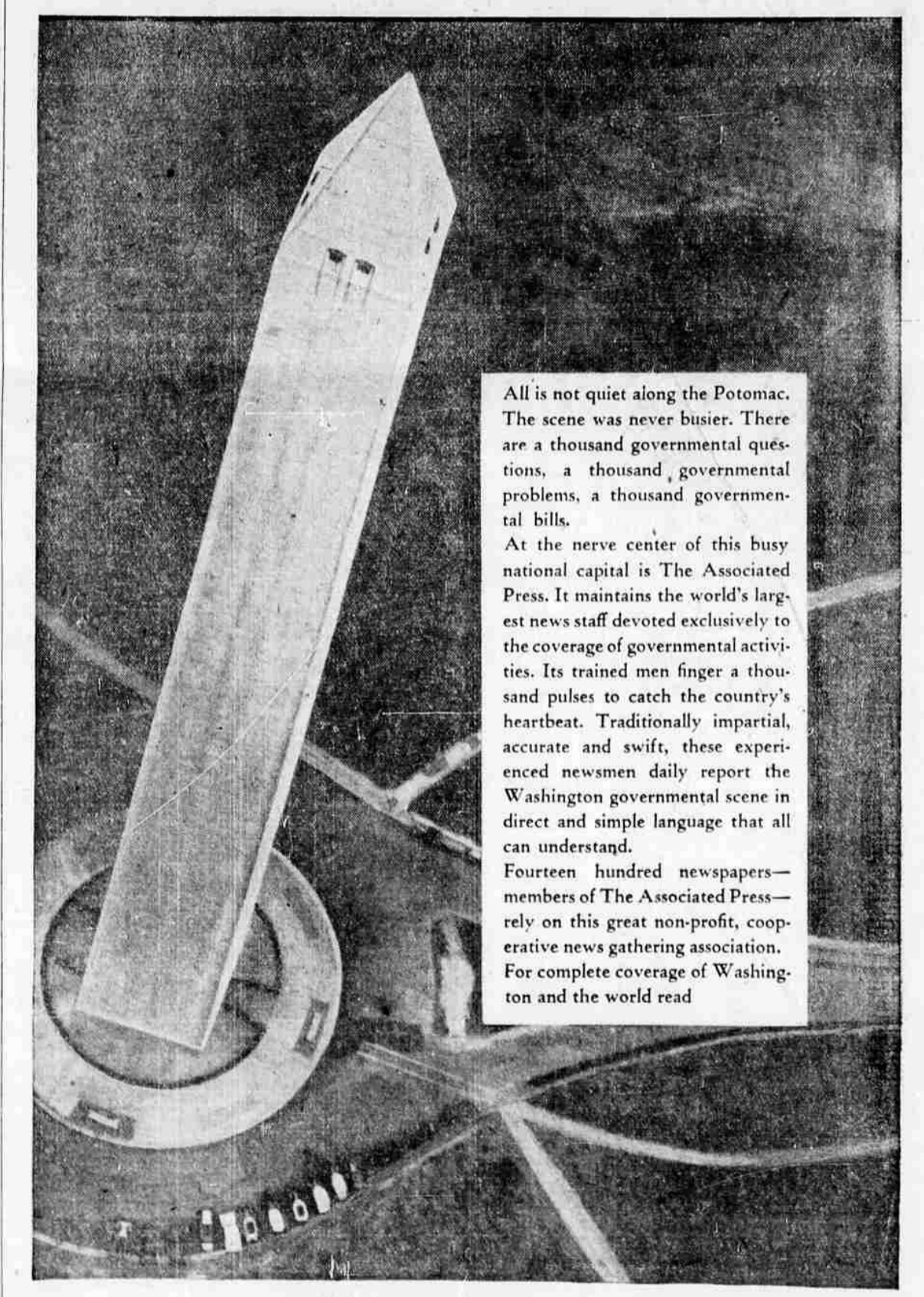
Shopping and Theatre Center

H. C. FRYMAN, Proprietor
R. H. WAGENER, Manager

SIXTH AND SPRING STREETS

"Get the Hayward Habit"

WASHINGTON and the world . . .



All is not quiet along the Potomac. The scene was never busier. There are a thousand governmental questions, a thousand governmental problems, a thousand governmental bills. At the nerve center of this busy national capital is The Associated Press. It maintains the world's largest news staff devoted exclusively to the coverage of governmental activities. Its trained men finger a thousand pulses to catch the country's heartbeat. Traditionally impartial, accurate and swift, these experienced newsmen daily report the Washington governmental scene in direct and simple language that all can understand. Fourteen hundred newspapers—members of The Associated Press—rely on this great non-profit, cooperative news gathering association. For complete coverage of Washington and the world read

MEDFORD MAIL TRIBUNE

A MEMBER OF THE ASSOCIATED PRESS

THE BIGGEST—BUT ALSO THE BEST