



Big Summer Savings!



Holiday Vacationers!

Auto Supplies!

Camping Equipment!

Sporting Goods!



# Decoration Day SAVINGS

**Why pay \$1.75?**

**For a 5-qt. Oil Change**  
Wards Low Price  
**82c**  
Plus Fed. Tax

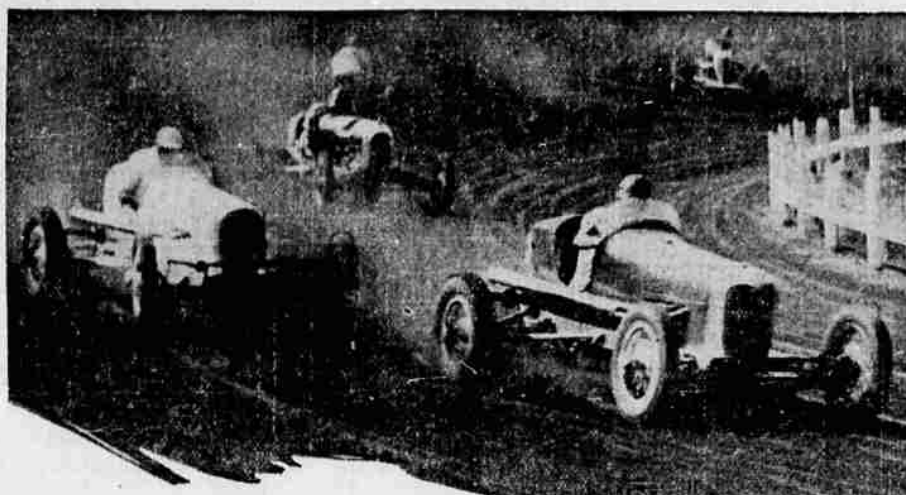
**Wards 100% Pure Pennsylvania Oil**

"Supreme Quality"—the same top grade that sells for 35c a quart at stations everywhere. Refined from Bradford-Allegheny—the world's costliest crude.

Complete 5-quart crankcase change.....80c  
Complete 7-quart crankcase change.....1.10  
8-qt. bulk "Commander" Motor Oil, plus federal tax.....**66c**

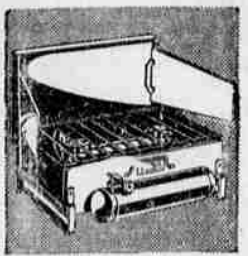
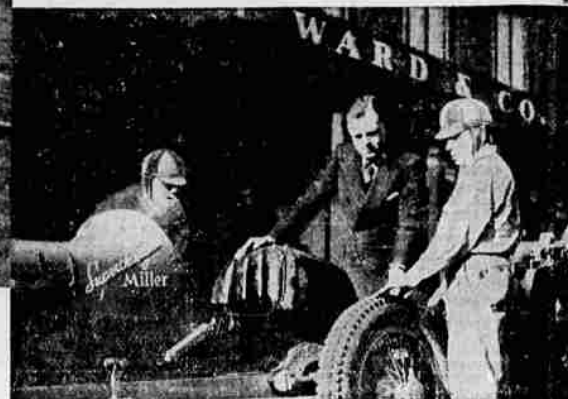


**Flashlight**  
All copper case, bevel lens. Streamlined.  
Cells, each.....5c  
**59c**



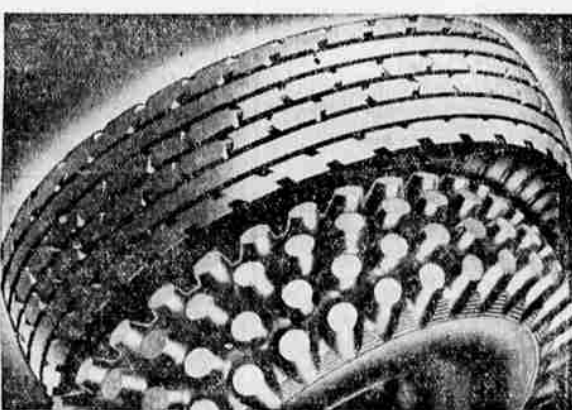
## Drivers Pay Cash for "Stock" Riversides

Wards do not build special "racing tires" — Race Drivers buy Wards "stock" Riversides, for cash! Only because "stock" Riversides stand up BEST under the punishment of race tracks, are they the choice of champions. Riversides stand up best for them—as they will for you. No safer "stock" tires made!



**Camp Stove**  
Prentiss Wabers **425**  
Instant-lighting 2-burner. Portable. Just right for camp trips! Cooks meals in a hurry!

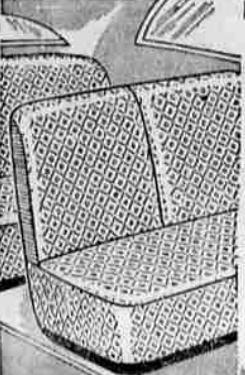
# MORE AUTO RACES ARE WON ON RIVERSIDES THAN ON ANY OTHER TIRE



Never before in the history of auto racing have Champion Drivers been so universally agreed on one tire! Never before have you—as a safety-conscious motorist, had so overwhelming a recommendation of the one best tire to buy! Think of it! 80% of all dirt track Champions won their titles on Riversides! You too, can get the same extra safety and longer life... for Wards build no special tires for anyone. You might well ask: "How do Wards sell HIGHER QUALITY tires at LOWER PRICES?" Remember, Riversides cost as much TO BUILD as other tires, but the manufacturer saves when he sells to Wards... Wards save when they sell to you. You benefit by these savings.

See Convincing Proof of Riversides Superiority Yourself!  
Watch Wards Riversides Win on These Tracks (69 in All):

- EASTERN STATES; American Automobile Ass'n. AAA Speedways
- EASTERN CENTRAL; Central States Racing Ass'n. CSRA Dirt Tracks
- MIDDLE-WEST; International Motor Contest Ass'n. IMCA Dirt Tracks
- PACIFIC COAST; American Automobile Ass'n. AAA Speedway & Dirt Tracks



**Seat Covers**  
Cloth **89c**  
Coupe  
Regularly 1.75! Not "shoddy" but good material! Costly construction features! Long-lasting! For 2 or 4-door sedan for...98c  
Fiber and cloth covers for coupe...98c  
Fiber and cloth, for 2 or 4-door sedan...1.49  
Fronts only



**Softball Bat**  
49c  
Regulation Official! Golden Ash, tape grip. Hurry in! Standard Official Softball 130



**Guaranteed 18 Months**  
**515** Exch.  
"Standard" quality. 8 standard plates. Compare with nationally famous 8.95 batteries. Finest quality Wood separators.



**Springfield Rifle**  
398  
Model 15... 22-cal. bolt action; 22-in. barrel; adjustable ear sight!



**Door Edge Mirror**  
75c  
Eliminates blind spots. Rust proof. Theft-proof, adjustable!



**Wheel Spinner**  
55c  
For steering ease or parking. Streamlined plated.



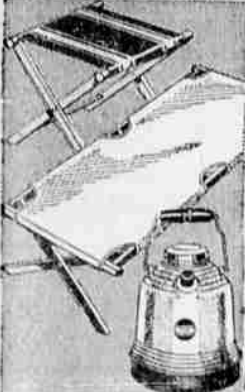
**Quick Action Fire Pump**  
63c  
Works quicker and easier. 18-in. barrel, 1 1/2-in. diameter.



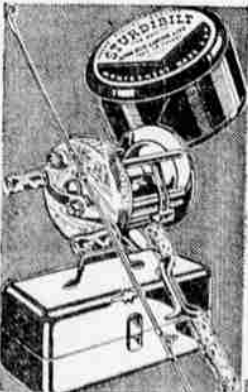
**Heavy Duty Auto Jack**  
149  
Bottle-lift screw type, 6 1/2-15-in. range. Hardened steel bearings!



**Wards Radiator Cleaner**  
34c  
10-oz. Con.  
Removes rust, impurities. Non-injurious. Prevents motor from overheating.



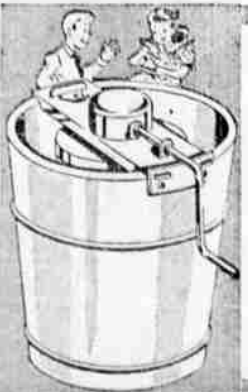
**Campers' Specials Folding Camp Cot**  
189  
Folds up compactly—fits in car or trunk! Strong canvas top, wood frame.  
Folding Camp Stool...25c  
Picnic Jug...1.00



**Special Offer Both Rod and Line**  
for only **347**  
Sturdybuilt silk casting line. Rod is 1-pc. solid steel.  
Level Wind Reel...1.59  
Tackle Box...1.29



**Army Style Locker Trunk**  
519  
30 by 16 by 12-inch size yet carries like a suitcase! Leather handles. Steel over wood. Veneer top and bottom!  
Black Fiber Suitcase...1.00



**Ice Cream Freezer**  
139  
Makes 2 quarts of delicious ice cream in a jiffy! Easy to turn, too. White cedar tub, painted green. Hurry, they'll go fast!



**Chromium Exhaust Cover**  
33c  
Keeps oily smudge off car. Chromium plated. Red jewel reflect.



**Low Priced Sun Glasses**  
19c  
Protect your eyes from sun glare. Tinted lenses, strong shell frame.

**Clean-up Specials!**

**Combination Wax and Cleaner**  
49c  
Cleans and polishes—one operation.

**Velvet Sponge**  
7 1/2" x 8 1/2" size serviceable. **79c**

**Soft Chamois**  
14x18", pocket shaped **98c**

**Touch-up** 6-oz. Quick dry **25c**

**Top Dressing** One pint **59c**

**Polishing Cloth**, 20 sq. ft. **12c**

**Spike Brush**, 1 1/2 in. long. **15c**

**Your Chance to Save!**

**Wards Super House Paint**  
277 gal. In 5 gal. can  
No finer made! Equals paints selling up to a dollar more!  
Coverall House Paint \$1.30 Gal.

**Your Choice! 53c qt.**

**Coverall Floor Paint**  
Gal. covers 500 sq. ft.!

**Interior Gloss Paint**  
For bathrooms, kitchens.

**Semi-Gloss Paint**  
For walls and woodwork.

117 South Central Telephone 286

# MONTGOMERY WARD

Over 100,000 different items may be ordered from our CATALOG ORDER DEPT.