

Thirty-Second Year

No. 196.

WATCHDOG AUTOS GAIN POPULARITY IN GREAT BRITAIN

Puddle-Jumpers Measure Only 10 To 12 Feet From Bumper To Bumper—High Tax, Operating Cost

By William McGaffin (AP Feature Service Writer)
LONDON.—It's like riding a beetle to creep down the Strand in one of the new British four-cylinder "watchdog" cars.

These little puddle-jumpers measure only 10 to 12 feet from bumper to bumper, are only about four feet wide and so low that an average-height man almost has to bend double to enter.

There are probably as many cars in the Strand this side, however, as bigger ones.

Like their big brothers, the new model babies aren't much different from last year's. They may be a bit more "swooping" in design but British streamlining is still miles behind American.

Are Roomier
Instead of design, such prosaic points as comfort and safety are getting the ballyhoo.

And it's about time, what with narrower, bad roads and increasingly heavy traffic posing a problem which the government is trying to solve without success, so far.

Stronger body, better brakes, clearer vision—these are new features which share honors with "roomier passenger accommodation" and "an erect, well-supported driving position with all essential controls to hand."

Cheaper To Run
Midget cars are popular aside from the fact they're easier to worm through traffic jams.

First, they're cheaper, although the cheapest open car, a roadster, costs \$560 at the factory, and the cheapest closed car, a sedan, costs \$587.50. The British call 'em, respectively, "two-seaters" and "saloons."

Second, there's a government tax of \$3.75 per horsepower. Even though a car rated at 85 horsepower in America is scaled down to 30 here, the tax is high. The baby cars pay a \$30 tax on only eight horsepower.

Third, petrol—gasoline to you—costs 37 cents a gallon. And the midgets will go about 40 miles on a gallon.

Fourth, a midget can be insured for legal liability for about \$25 compared to the \$50 to \$75 required for larger cars.

Moreover, the midgets may have an engine only as big as a minute but they'll do from 50 to 60 miles an hour. And, under ordinary care, they're supposed to run for seven years without falling to pieces.

SECOND ASSEMBLY FOR CHURCH YOUNG PEOPLE COTTAGE GROVE NOV. 12

Large groups of young people from all denominations are eagerly looking forward to the second annual Oregon Christian youth assembly in Cottage Grove, November 12-14. The first assembly was held last year in connection with the National Preaching Mission in Portland at which time the Oregon Christian Youth Council, the



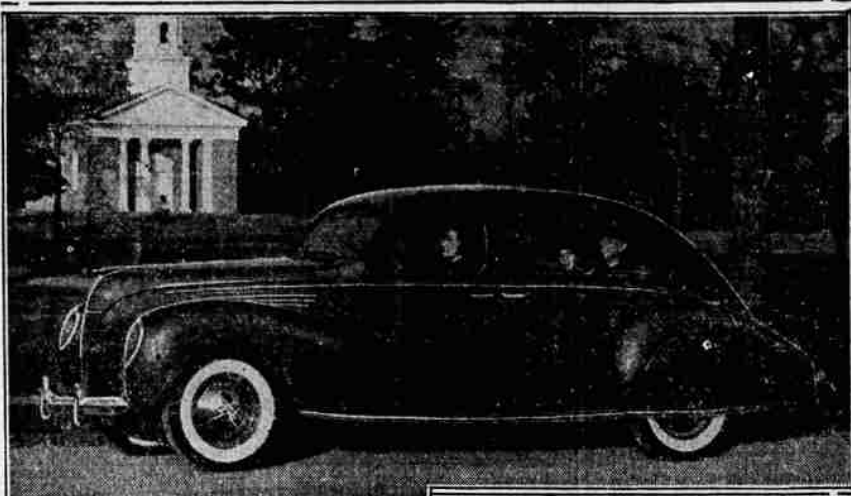
Wings of the Morning!

It's the Flavor that mellows his morning mood and sets his heels a'clicking that Schilling Flavor.

Schilling Coffee

One for Percolator—another one for Drip or Glass Maker.

Lincoln-Zephyr Pioneers New Styling



Top photo—The 1938 Lincoln-Zephyr Sedan with four doors. Inset—Roomy new driver compartment.

A FRESH approach in the development of the modern streamline design is offered in the new 1938 Lincoln-Zephyr V-12 cylinder motor cars. The sedan with four doors is pictured above. The "tear drop" front end suggests the highly streamlined front of a racing plane. The "air stream" treatment is carried out smartly in the long sweep of the hood, the rakish tilt of the windshield, the graceful body contours and the new massive fenders and lamps. Inset, the front compartment which has been enlarged and the gear-shifting lever moved out of the way of driver and front seat passengers. Among the new engineering features are an increased wheelbase length, now 125 inches, and the use of hypoid drive in the rear axle. The 110 horsepower V-type 12-cylinder engine operates more quietly, yields a smoother flow of power and functions with maximum economy.



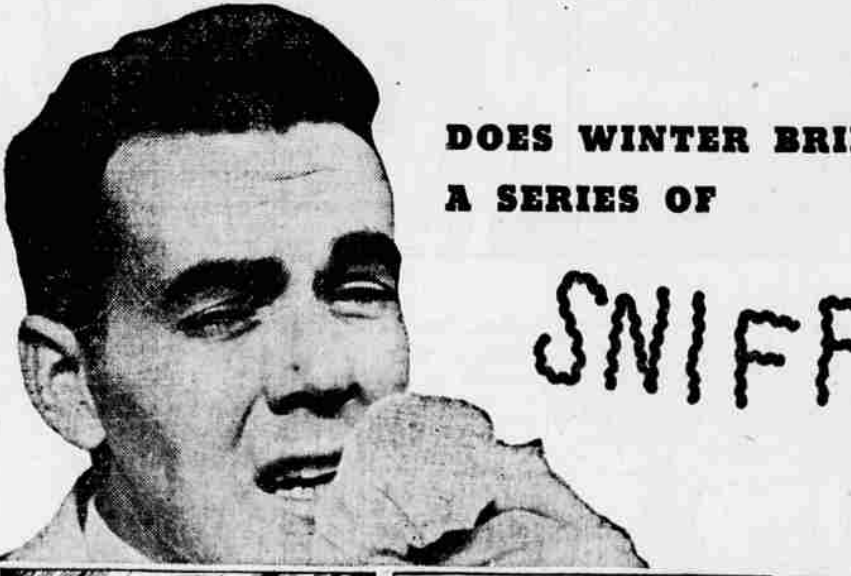
youth section of the Oregon Council of Churches, was organized.

Two nationally renowned speakers are to be on the program at Forest Grove: Martin Harvey, president, North American Christian Youth Council, and Dr. L. Foster Wood of the department of home and marriage of the Federal Council of Churches, New York City. In addition some 30 Oregon leaders will have a place on the program. Among groups providing leadership are: Christian Endeavor, Baptist Young People's

Union, Epworth League, Congregational Pilgrim Fellowship, Episcopal Young People's Fellowship, Luther League, Salvation Army, Older Girls' Conference, Presbyterian Young People's League, Hi-Y, Y. M. C. A., Y. W. C. A. and college Christian youth organizations.

Registration is open to all interested young people. Under leadership of the Rotary club, Forest Grove is entertaining on the Harvard plan. Registrations should be sent to Miss Eunice McGlasson, registrar, Forest Grove, Ore. Further information may be procured from Miss Dulcinea Brown, 205 Y. M. C. A. building, Portland.

Rev. James Hamilton of Medford will act as one of the resource leaders at the assembly.



1 Winter is a trying season. Colds and other infections abound in every crowded place. Too often, people permit common constipation to lower their energy, and get them in a "run-down" condition.

2 Make sure every member of your family keeps regular habits. For a healthy person has better resistance to colds and other germs. Serve Kellogg's ALL-BRAN—a ready-to-eat cereal—regularly for regularity.

3 You feel so much better when you maintain regular habits of elimination. Try Kellogg's ALL-BRAN a week. Enjoy this natural laxative food instead of dosing yourself with pills and drugs.

Help your family keep well this winter

Go into this winter feeling at your best. Remember, common constipation can cause headaches, loss of appetite and energy.

Relieve constipation with Kellogg's ALL-BRAN. This food is a generous source of "bulk" to aid regular elimination. Unlike certain pills and drugs, it is not habit-forming or griping.

ALL-BRAN also supplies vitamin B to help intestinal tone and iron for the blood. Eat two tablespoonfuls daily. In chronic cases, with each meal. Enjoy as a cereal with milk or cream, or cook into recipes.

Buy this food at your grocer's. It will help your family keep well this winter. Made by Kellogg in Battle Creek.

Kellogg's ALL-BRAN Relieves Constipation



Delicious All-Sweet Recipes

Grandma's Caramel Pie

1 cup sugar
6 tablespoons flour
1/4 teaspoon salt
2 2-3 cups milk
4 egg yolks, slightly beaten
1-3 cup caramelized sugar
3 tablespoons Allsweet
1/2 teaspoon vanilla
1/2 cup coconut
1/2 cup cream, whipped

Combine sugar, flour and salt in top of double boiler; add milk and egg yolks, mixing well. Place over rapidly boiling water and cook 10 minutes, stirring constantly. Remove from fire, but allow to remain over hot water. Place 1-3 cup sugar in iron skillet over a medium flame and stir constantly until melted. Add at once to first mixture, stirring until blended. Add Allsweet and vanilla. Cool. Turn into pie shell. Spread with whipped cream and sprinkle with coconut.

Southern Orange Pie

1 cup orange juice, strained
1 cup boiling water
1 cup sugar (6 tbs sugar)
1/2 cup flour
2 tablespoons cornstarch
1/4 teaspoon salt
3 eggs, separated
4 tablespoons grated orange rind
1/4 cup lemon juice
2 tablespoons Allsweet

Heat orange juice and water in double boiler. Mix one cupful sugar, the flour, cornstarch and salt; into this stir the hot liquid. Cook in double boiler until thick. Pour over beaten egg yolks, and add orange rind. Cook 5 minutes in double boiler; add lemon juice and margarine and let cool.

Pasty: One Crust

1 cup general purpose flour
1/2 teaspoon baking powder
2-3 tablespoon water
6 tablespoons Allsweet

Sift flour and baking powder. Quickly cut in Allsweet. Sprinkle water, a little at a time, over the mixture and blend with a fork. Press the particles of dough together with the hands and pat lightly on a floured board. Roll quickly and lightly. Bake in hot oven (425 F.) 12 to 14 minutes.

Toffee Cookies

1 cup All sweet
1 cup brown sugar
1 egg, separated
1 teaspoon vanilla
2 cups flour
2 tablespoons cinnamon
1/2 cup ground nuts
Cream Allsweet and sugar together.

Add unbeaten egg yolk and vanilla. Sift flour and cinnamon together, and add to mixture little at a time, blending well after each mixture. Pat out with hands about 1/4 inch thickness on well greased cookie sheet. Spread over top with unbeaten egg white and sprinkle with ground nuts. Mark out in squares with silver knife. Bake 10 minutes in slow oven (375 F.) Let cool on cookie sheet then lift off with spatula and break off squares. These cookies keep crisp indefinitely in tightly sealed cans.

Ice Box Cookies

1 cup Allsweet
2 cups sifted brown sugar
2 eggs
3 1/2 cups flour
1/2 teaspoon salt
1 teaspoon soda
1 cup chopped nuts
Cream Allsweet and brown sugar. Add eggs and mix well. Sift flour, salt and soda, add nuts and combine with creamed mixture. Mold into a round roll, put into ice box over night. Slice very thin, bake in moderate oven (375 F.) until lightly browned.

Snow White Cake

2 cups sifted cake flour
2 teaspoons baking powder
1 cup sifted sugar
1/2 cup Allsweet
2-3 cup milk
1 teaspoon vanilla
3 egg whites, beaten

Sift flour with baking powder three times. Cream Allsweet and sugar until very light and fluffy. Add vanilla to milk. Stir a little of the flour with the creamed mixture, then add the remaining flour and the milk alternately in thirds, to the creamed mixture, stirring well after each addition of flour and milk. Fold in between egg whites. Pour into two small greased layer cake pans and bake in a moderate oven (375 F.) 25 to 30 minutes or into one pan and bake 30 minutes at (350 F.)

Notice:
To whom it may concern: I will not be responsible for bills made by Helen Jamison Totten.
W. B. TOTTEN.

CANADIANS GLUT SHINGLE MARKET

SEATTLE, Wash., Nov. 5.—(AP)—The bureau of customs of the treasury department has announced the shingle import quota for the present half-year was filled November 1 and all ports of entry have been notified, Charles McGrath, secretary-manager of the United States Red Cedar Shingle Industry, Inc., said today.

He said preliminary figures of the customs department show British Columbia mills "may have attempted to over-ship the quota by as much as 20 per cent."

"The Canadians made no effort to regulate their exports under the quota system," McGrath said. "They exhausted their six-months' quota in four months. They dumped 62 per

cent of that quota into this country in two months."

He said the result was that prices in this country were depressed 10 per cent and more than half the United States mills were forced to close in October, normally the shingle industry's best period.



425 EAST MAIN Announcing Opening of MEDFORD'S WHOLESOME SEA FOOD MARKET

Across From Roxy Theater

Featuring Products Fresh From Coos Bay

OCEAN CAUGHT SALMON
DEEP SEA CRABS
QUALMAN'S QUALITY OYSTERS
FRESH EMPIRE CLAMS

PAY CASH AND SAVE AT BOYD'S MARKET

S. & H. Green Stamps Phone 1054
SPECIALS for NOV. 6 and NOV. 8

PEANUT BUTTER 2 lb. glass jar 25c	BEANS Small White 10 lbs. . . . 39c 100 lb bgs \$3.79	Toilet Paper Northern 3 rolls 19c 1 roll 1c All for . . . 20c
SHORTENING , Pearl, 4 lb. carton . . . 43c	COCOA Baker's. Note the low price . . . 1 lb. tins 10c	HONEY , Stewart's local 5 lb. pails 49c

FLOUR Cake Flour Softasilk, pkg. . . 23c HIGHLAND CHIEF Hardwheat 49 lb. . . . \$1.49 bags KITCHEN QUEEN 49 lb. . . . \$1.69 bags CROWN CROWN BEST PATENT Unbleached 49 lb. . . . \$1.87 bags Crown PANCAKE Flour No. 10 bags 43c	Kellogg's All Bran, pkg. . . . 21c Krumbles, 2 pkg. 19c Pen, pencil, Ruler kit Free with 2 pkgs. Corn Flakes, 3 pkgs. . . . 20c Glass Bowl Free with 3 pkgs. Koffee Hag, lb. can 35c Bisquick Sperry's Large pkg. 25c	Fruits and Vegetables LETTUCE Fancy solid 9c 2 heads CELERY Utah fancy green Large stalk 9c Extra fancy lb. . . . 5c SWEET POTATOES U. S. No. 1 4 lbs. . . . 15c GRAPEFRUIT Sunkist Arizona Large size dozen 43c CAULIFLOWER Fancy 2 heads 25c POTATOES Klamath Gems No. 2—50 lbs. . . . 39c No. 1—50 lbs. . . . 69c
--	---	--

GRAPEFRUIT JUICE Del Monte No. 2 tins can 11c Dozen No. 2 cans \$1.27	ORANGE JUICE Shavers No. 2 tins can 13c Dozen No. 2 cans \$1.49	TOMATO JUICE Swift's No. 2 cans—3 cans 23c Dozen No. 2 cans 89c
---	---	---