

THOUSANDS TREK TO COAST STATES FROM DUST BOWL

Warnings by Rural Resettlement Administration Fail to Check Hegira — Few Find Permanent Homes

PORTLAND, Sept. 1.—(AP)—Undaunted, even jubilant, thousands of men, women and children continue their treacherous trek over the Rocky mountains from the great plains to the Pacific northwest, heedless of the new warnings circulated by the Rural Resettlement Administration.

Two conditions should have halted this flight from the drought areas months ago, said Walter A. Duffy, regional director. The economic outlook has improved in many sections of the middle-west. There is a scarcity of developed farm land in the green northwest.

Come in Doves. The new pioneers, traveling the same routes as those taken by the settlers of 75 years ago, reach Oregon, Idaho and Washington in such number the resettlement administration is hard pressed to keep up with them.

Sixty thousand arrived between January, 1936, and July, 1937. Less than 5,000 families have succeeded in establishing any sort of permanent farm tenancy; 12,000 live in shacks on abandoned farms, in tourist camps or in vacant buildings supplied by the more generous communities. Some find seasonal jobs in the field and others fight for an existence on non-agricultural cut-over and sagebrush sections. Living is precarious at the best.

Problem Serious. "The problem of assimilating farm families from drought areas becomes serious when it is recognized that it is practically impossible to rent or lease an economic farm unit in the Pacific northwest without replacing present operators," Duffy said.

"Their only alternative is to locate on cheap cut-over sagebrush lands in submarginal areas where successful operations are impossible or compete with local labor in farm and urban districts. This competition is already being protested by local labor groups. They cannot be successfully returned to their states of origin and indications are that an overflow of drought settlers in California is already moving northward."

The total number of families reported in Oregon is 6,646, about 3,325 have been settled and 3,311 are transient. Washington families totaled 5,832. About 4,450 were located and 1,382 are transient.

Idaho has 6,688 migrating families. The administration has settled 4,008 while 2,680 are listed as transient.

FRUIT EXPORT HIT BY HIGHER RATES BRITISHER AVERS

PORTLAND, Sept. 1.—(AP)—Despite a greater demand in England for northwest apples, higher shipping rates present a serious threat to the export fruit market, Charles Wray of Hull, England, said here.

England's apple crop probably will be only 25 percent of last year's, he said. "It looks like we will be able to take a larger share than usual of your fruit."

"But the shipping companies have increased the rate on apples to 62½ cents a box when it should have been reduced 10 cents to 52½ cents. The rate on pears goes up to 92½ cents a box."

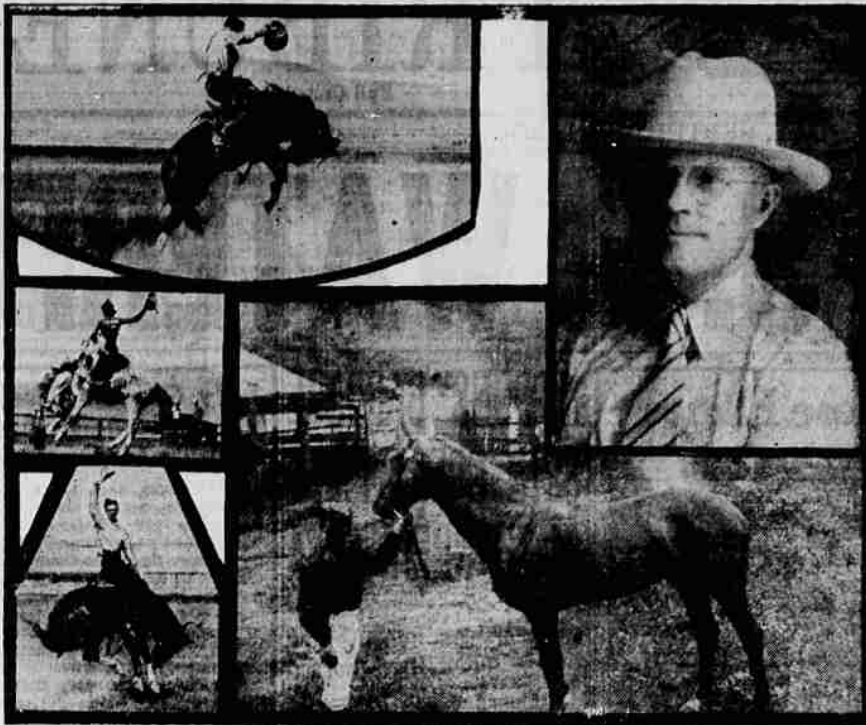
He predicted that both producers and shipping companies would suffer financial loss under the higher rate.

PORTLAND, Sept. 1.—(AP)—The national apple crop will be 75 percent greater than a year ago but prices will be lower, a market survey showed today.

The federal bureau of agricultural economics reported production large in Pennsylvania, New York, Michigan, Ohio and Virginia. A more than normal portion of the supplies are near large eastern consuming centers and the situation will work to the disadvantage of Pacific coast states, the bureau said.

JO JOHNSON teaching popular piano playing, Baldwin Piano Shoppe Tel. 335.

Lakeview Roundup Promises Color, Action



One of the most picturesque and colorful events of the Shasta-Cascade Wonderland is that to be staged at Lakeview, Ore., September 4, 5 and 6. Horses and riders come from the great range and livestock area that is the last stand of the Old West. In the upper right is C. J. Clause, president of the Lakeview Roundup association. Lower right is a picture of Oregon Eclipse, most unusual Lake county racehorse of 53 years ago. He never lost a race and had the distinction of beating every record in every race he entered on the Pacific coast. The jockey is of the 1884 vintage, also. The bucking pictures show masters of the art of western riding as seen at the Lakeview roundup. (Wonderland News Service).

COTTAGE CHEESE VERSATILE FOOD; HIGH IN CALCIUM

Held Desirable for Diet of Children — Made More Palatable by Seasoning — Has Many Table Uses

By Bureau of Home Economics. Cottage cheese isn't what it used to be! At least in most parts of the United States. What grandmother made on the back of the kitchen range—what old-country folk called *smearose* or *schmier kase*—is in a decline. The fine grained, mealy product with its distinctly acid flavor is less and less found in the market of today.

Yet that sold type of cheese is mighty good eating—that is, when it's good it is mighty good. Where it is still to be found, it is likely to be a temperamental product. Not only is there usually a wide variety of results from the same farmer's kitchen or the same milk distributing center, but also from one home or factory to the next. And because it starts its career with a high acid content, it will spoil more quickly than the other type cottage cheese.

Probably 80 percent of the cottage cheese of today is the mild flavored "popcorn" type—that is, the big flake, low acid kind made with rennet. The size of the flake varies according to local demand. In some sections it's an inch flake; in others, a quarter inch. The larger the flake, the more heavy is retained in the center, the less readily heat penetrates it—and the sooner it should be used, as it sours more quickly.

Sweet Milk Used. Sweet rather than sour milk is used for the rennet type cheese; so naturally it keeps longer than the old-fashioned acid kind. Its acidity increases gradually, but it can develop considerably and still be edible and nutritious.

Any type cottage cheese is a highly perishable product, however, and should be stored in the coolest possible place and eaten as soon as possible.

A high quality cottage cheese has a clean, mildly acid flavor, a smooth uniform texture and a tender curd. If a cheese is tasteless, or over acid, or bitter, or has a hard or tough curd, it is either old or has been badly made.

The greatest cottage cheese eaters are those on the Pacific coast and in the east north central states.

Cottage cheese is an excellent and inexpensive source of protein and a good source of calcium and phosphorus, say the food composition specialists of the bureau.

Value in Calcium. "And it is the calcium value of cottage cheese that is especially important," chime in the nutritionists.

"The ordinary mixed diet of Americans is probably more deficient in calcium than in any other mineral." Most nutrition specialists consider that the child needs an average of not less than a gram of calcium a day for the best rate of growth and for insuring good teeth. And a quart of milk has a little more than a gram of calcium in it—1.2 to be exact. A bit more than half the calcium of milk is left in the whey when it is transformed into cottage cheese; but the almost-half left makes it still a good calcium food. A 2-ounce serving of cottage cheese, and perhaps that is the average serving, would furnish about five hundredths of a gram of calcium—0.46 gram to be specific—pretty far short of the day's total quota.

Cheese and milk are not the only good sources of calcium, of course; vegetables rich in this mineral are beet, dandelion, turnip, and mustard greens, and green cabbage and chard. Is Versatile Food.

Cottage cheese certainly is a versatile food. It can be worked into delicious salads and salad dressings, into deserts, and even into cooked dishes. Because of its high protein value, it may be the basis of the

main dish of the meal, and as such cut down on the food bill.

As the cottage cheese flavor is pretty mild, it needs some judicious seasoning. A bit of onion juice does a lot for it. Chives chopped fine make another good addition. Still other excellent seasonings are horseradish, chopped olives or parsley, celery or cucumbers, pimientos, green peppers.

Left-overs of bacon, ham and other cold meats can be nicely combined with the cheese. So can peanut butter.

Cottage cheese may be substituted for cream cheese in recipes if the cottage cheese is pressed through a fine sieve. For instance, in cheese cake.

Simple ways of serving cottage cheese are: for stuffing celery, peppers, prunes, peaches or pears in balls with pineapples and baked in a cottage cheese-nut loaf.

As it combines equally well with meats, fruits and vegetables its possibilities are almost limitless.

Closing time for Two Late to Classified Ads is 1:30 p. m. Use Mail Tribune want ads.

BUREAU APPROVES PROMOTION PLANS FOR COAST PEARS

\$55,000 Available for Publicizing Fruit This Year — Art Work, New Style Recipe Folder Sanctioned

PORTLAND, Sept. 1.—(SpI)—Ratification of advertising plans and new material for use in promoting pear sales was one of the main accomplishments of the Oregon-Washington-California Pear Bureau executive and advertising committees at their meeting here last weekend.

Approximately \$55,000 was reported as being available from members' commitments, \$20,000 more than last season.

Art work and color drawings on the new window display material and car cards were exhibited. The displays showed the bureau has departed from past practice of bright colors, changing to softer colors designed to attract women.

Pear Week Poster. A "Pear Week" poster, to be displayed by all grocers during the week prior to Thanksgiving, will combine autumn colors of yellow and brown. Since fresh pears are available in a limited number of cities, canned pears also will be publicized in this campaign.

By combining both fresh and canned pears, "Pear Week" can be advertised nationally. Canning interests will probably contribute to this campaign, according to a preliminary survey.

Following a recent survey among home economics editors of magazines and newspapers by the bureau it was found that recipes printed on index cards to fit in recipe files would be much more popular with housewives than recipe booklets.

Hence the bureau's new recipe booklet will be in the shape of a folder, being a self-mailer, and will contain recipes printed on paper the size and weight of recipe file cards, with a notation to "cut along the dotted line and preserve permanently in your recipe file."

Webster Returning East. New radio transcriptions were auditioned by the committee members and approved.

Considerable discussion was given to the mechanics of taking California into the bureau and changes in by-laws were discussed.

Following the meeting Roy Webster, eastern manager, left for California and will visit markets in the southeast before returning to New York about September 15.

CHINA IS CAPABLE OF FINANCING WAR, EXPERT DECLARES

In Better Fiscal Position Now Than Ever Before, Says Institute Staff—U. S. Policies Of Benefit.

SAN FRANCISCO, Cal. (UP)—As a result of China's new financial policy, which has now been in effect for 20 months, she is in a better position to finance a war with Japan than at any previous time in her history, according to Dr. Ch'ao-ting Chi, Chinese expert of the Institute of Pacific Relations.

The agreement entered into between China and the United States as late as July 9, 1937, is expected to contribute in no small degree to the success of China's new monetary system and in the maintenance of her war chest in the present conflict.

While the full terms of the agreement with the Washington treasury officials, which were made on the occasion of a visit to Washington by Chinese Finance Minister Dr. H. H. Kung, have not been fully revealed, it is known that they will permit of the orderly disposal by China of large stocks of Chinese silver without driving down the price. Instead, it is understood that any such sale of Chinese silver would be made at the advanced arbitrary price fixed by the American treasury.

The new monetary policy of China, which was rendered necessary when the United States began purchasing silver at advanced arbitrary rates the same as gold and which resulted in the flight of Chinese silver from China, has two essential features.

National Bank. The first is that China, for the first time in her history, will have a central, bankers' bank, through which the central government will be able to influence the country's monetary policy.

The second feature of the new Chinese monetary policy, which is unique in its form, is that it consists of a form of government-managed foreign exchange.

Under this system, China has not adopted a foreign exchange standard whereby the national currency is linked to a single foreign exchange, thus involving a considerable measure of dependence on a single foreign country. Theoretically, the Chinese have not tied their currency to any foreign standard, although in practice it has been stabilized largely on the pound and the dollar.

Under this arrangement, the stability of the Chinese dollar is maintained under the decree of Nov. 3, 1935, by an unlimited buying and

selling of foreign exchange, but the real ability of China to manipulate its exchange rate is conditioned by the size of her balance abroad.

Silver Reserve. If these continue to impose a drain on her foreign balance, as will probably be the case in the present conflict with Japan, she will be obliged either to export gold or silver or contract a foreign loan. Just what amount China's silver reserves are at the present time, the institute is unable to state, but nevertheless the agreement with the United States gives her the most favorable opportunity for making the most of them.

In fact, under this agreement, China will not even be obliged actually to export the silver, as long as she has it at home for collateral.

For the time being, China is believed to have ample stocks of silver that resulted from her nationalization of the metal.

As regards the organization of the new Central Bank of China, the institute finds that China has had the fullest co-operation of the foreign banks at Shanghai, and especially the British, who offered at once their co-operation by turning over their Chinese silver for exchange for legal tender notes.

In general, the Japanese bankers, and especially those at Tientsin, have opposed vigorously the new Chinese monetary policy, but later this was modified at Shanghai, at least, where the Japanese bankers there also offered to turn their reserves of Chinese silver to the Chinese Central bank for its notes.

The two net results of the new Chinese monetary policy, according to the survey of the institute, have been both to stimulate foreign trade and foreign borrowing. Both of these are being counted on very much to help China in her present struggle.

Some idea of the beneficial effects of the new Chinese monetary system are indicated by her ability to secure credits in Czechoslovakia and elsewhere in Europe for armaments and munitions, recently announced by Finance Minister Kung himself.

SALEM, Sept. 1.—(UP)—Canners of the central Willamette valley report the 1937 pear pack will run about half the size of original estimates. The pear crop ripened unusually

WILLAMETTE CANNERY PACK OVER-ESTIMATED

HELP STOMACH DIGEST FOOD

Without Laxatives—and You'll Eat Everything from Soup to Nuts. The stomach should digest two pounds of food daily. When you eat heavy, greasy, coarse or hard to digest food, you are overloading your stomach. Your food doesn't digest and you have gas, heartburn, nausea, pain in your stomach. You feel your side upset all over. Doctors say there's a medicine for stomach pain. It is *Dr. Williams' Pink Pills*. It takes those little black tablets called *Dr. Williams' Pink Pills* in 3 minutes and you feel back on your feet. It's in 30-cent bottles in all drug stores. Sold everywhere. (c) Sell & Co. 1937.

small and short of canning requirements. The cherry crop, after a slow start due to midsummer rains, came through and exceeded expectations, however. Salem and vicinity will produce 10,000 to 15,000 barrels of pitted and packed cherries.

CHRYSLER

DEALERS' NATIONAL USED CAR SALE WEEK

ENDS SATURDAY SEPT. 4TH

ONLY FOUR BUYING DAYS LEFT!

DON'T DELAY COME IN TODAY BUY BEFORE USED CAR PRICES GO UP!

RARE BARGAINS NOW IN ALL MAKES AND MODELS!

PICK YOURS WHILE THE CHOICE IS WIDE

SEE

CLASSIFIED PAGES FOR CHRYSLER DEALER USED CAR ADS!



3 DAY HOLIDAY AHEAD

PLAN NOW

When you start your motor trip, see to it that it is a happy jaunt of no regrets. Be sure that your car gives you no trouble. That alone is enough to spoil any trip. Take your car today — while you think of it — into a nearby service station displaying the sign of the Flying Red Horse. Have spark plugs tested and cleaned. Fan belt and oil filter checked. Light bulbs tested and cleaned. Battery cleaned and serviced. Tires examined and properly inflated. Crankcase, transmission and differential drained and flushed. Your General dealer will gladly do these things for you without charge — except for any materials you may need and ask for. And don't forget the importance of having your car lubricated with Mobilgrease and Mobil Lubricants — and your crankcase filled with MOBIL OIL. And by all means start your trip and continue your trip on Mobilgas, America's favorite gasoline.

When you start your motor trip, see to it that it is a happy jaunt of no regrets. Be sure that your car gives you no trouble. That alone is enough to spoil any trip. Take your car today — while you think of it — into a nearby service station displaying the sign of the Flying Red Horse. Have spark plugs tested and cleaned. Fan belt and oil filter checked. Light bulbs tested and cleaned. Battery cleaned and serviced. Tires examined and properly inflated. Crankcase, transmission and differential drained and flushed. Your General dealer will gladly do these things for you without charge — except for any materials you may need and ask for. And don't forget the importance of having your car lubricated with Mobilgrease and Mobil Lubricants — and your crankcase filled with MOBIL OIL. And by all means start your trip and continue your trip on Mobilgas, America's favorite gasoline.



LOOK FOR THE FLYING RED HORSE

MOBIL GAS and MOBIL OIL

LARGEST SELLING GASOLINE IN AMERICA LARGEST SELLING MOTOR OIL IN THE WORLD

GENERAL PETROLEUM CORPORATION • • • A SOCONY-VACUUM COMPANY

THINK! MORE MEN PREFER THAT FINER CROWN TASTE!

THINK BEFORE YOU DRINK

Seagram's 7 Crown

BLENDED FOR FINER TASTE

SEAGRAM'S SEVEN CROWN BLENDED WHISKEY. The straight whiskey in this product are 8 years old. 40% alc. by vol. (80 proof). Seagram-Distillers Corporation, Executive Offices, New York. 50 Proof, 1937, Seagram-Distillers Corporation, Executive Offices, New York.