

## WHITE OFFICIALS TO ATTEND ABBEY OPENING IS WORD

With a constant increase in the volume of sales necessitating a move to larger quarters, W. W. Abbey Inc., dealers throughout the Medford region for White and Indiana trucks manufactured by the White Motor company, this week announced the grand opening of a new and modernized sales and service building, said to be one of the finest in this part of the state.

Scheduled for Wednesday, September 1, the grand opening will be attended by numerous White officials, among them C. W. Auer, the company's district manager at Seattle.

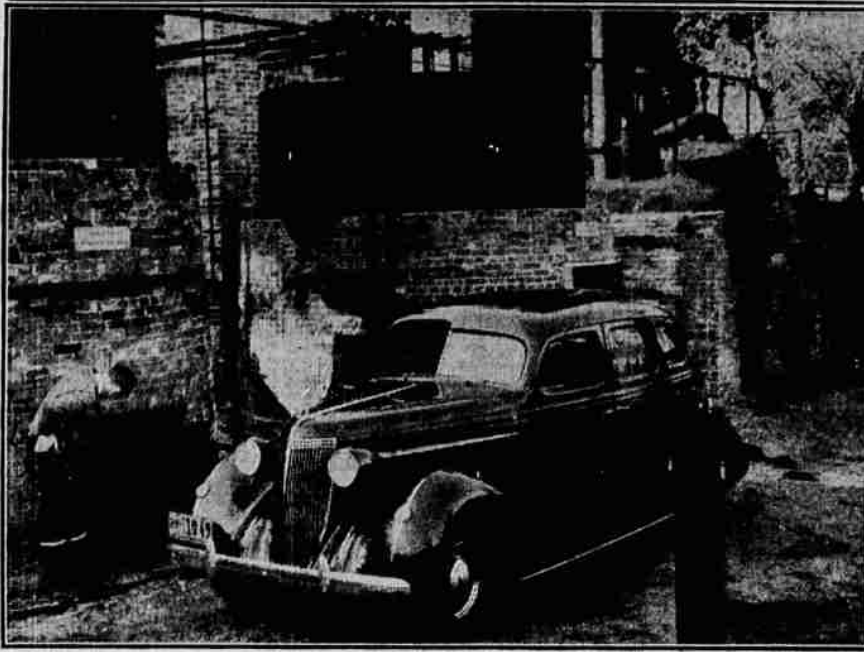
Headed by Walter W. Abbey, prominent Medford resident, the company began handling the White truck line in January of this year, and has established a phenomenal sales record during the past eight months. Proof of this record lies in the fact that Joseph Daly, vice president of W. W. Abbey Inc., just recently returned from the annual meeting of the White Club held at Murray Bay, Canada. The club is an honorary organization, and membership is limited to the 75 leading salesmen in the country. So great were Medford sales that Mr. Daly placed thirty-seventh in the final club standings.

The new building will house a complete line of the latest White and Indiana truck models, with particular attention being focused on those units constructed specifically for service in the logging fields, M. Abbey said. Whites working in the lumber industry in these parts have set a splendid record for low-cost operation, power and consistent, dependable service.

Models which have become favorites in Oregon logging fields, and which will be available for inspection in the new quarters, are the White models 700, 704K, 712, 718, 904. These units were engineered especially for logging service after White engineers studied actual operating conditions in this region. Built to withstand all conditions, shocks and stresses, these models are outstanding examples of White's quality products in this area.

W. W. Abbey Inc. will also place the spotlight on the new low-price White model 700, a rugged all-round unit introduced this year. Powered by a White six-cylinder engine of 280 cubic inch displacement with a counter weighted heat treated seven-bearing crankshaft, the unit proved its ability to "take it" during recent tests in the searing deserts of Arizona. With optional wheelbases rang-

## Stilled Still Still Stands



In its ramblings about the country, this Nash Ambassador Six happened upon a relic of the horse and buggy days. It is California's first oil refinery where crude oil from the State's "discovery" well was distilled to make kerosene. But Thomas Edison and that rich-man's plying, the automobile, soon knocked the bottom out of the kerosene market and shortly after the refinery was built in 1876 it was no longer profitable to operate. A sentimental oil company recently restored the crumbling affair in memory of D. G. Scofield and his pioneer associates of the California Star Oil Works.

ing from 136-inch to 196-inch, the truck has a four speed transmission and a single reduction full-floating rear axle.

Another feature to be found in the new Abbey building will be the all-streamlined Indiana model 88 and 87 trucks. White-built, the Indianas bring positive streamline style to the low price field for the first time. Rated in the 1 1/2-ton field, the Indianas have six cylinder Hercules engines of 283 cubic inch displacement, four speed Warner T-9 transmissions, and Timken single reduction full floating rear axles. This make truck, assembled and thoroughly inspected by White engineers, has long been a favorite with varied operators in the northwest.

In the very near future, Mr. Abbey also will show for the first time the new White model 800 Merchandor, an all-value, multi-stop delivery truck, designed especially for service in the wholesale bakery, dairy, laundry and department store field, and for all delivery services requiring fast, dependable equipment. This radically-styled model will make its appearance about the middle of October.

W. W. Abbey Inc. will maintain their new truck headquarters at

Ninth and Bartlett streets, and will continue to canvass old and new White accounts in the seven counties of Coos, Curry, Douglas, Jackson, Josephine, Lake and Klamath.

### HOOPER PASSENGER IN LEAP BEFORE BOMBING

ABOARD THE DOLLAR LINER PRESIDENT HOOVER, Sept. 1.—(AP)—Affidavits of fellow passengers indicated Norman G. Harris, American resident of Shanghai, leaped overboard to his death shortly before this American liner was bombed by Chinese planes.

Evidence concerning the American's disappearance was taken by William Collins, clerk of the United States court in China.

Friends said he showed signs of mental distress prior to his vanishing. They blamed financial reverses caused by the Sino-Japanese hostilities.

### PENDELTON STORES TO JOIN 6 P. M. CLOSING

PENDELTON, Sept. 1.—(AP)—A group of Pendleton stores, including ladies' dress shops, furniture and hardware stores, and department

stores, today announced that on Monday, September 20, following the annual round-up here, they will join food stores of the city in closing at 6 o'clock each evening, including Saturdays, and in remaining closed on Sundays and holidays. Food stores adopted the new closing agreement this week.

### LANDING OF BIG TUNA EXCITES CATALINANS

AVALON, Catalina Island, Calif., Sept. 1.—(AP)—Sport anglers were excited today over news of the catching of a 130-pound blue-fin tuna, largest taken in Santa Catalina island waters in 10 years.

Charles Lang brought it to gaff last night after 27 minutes battle using regulation 24-thread tuna club tackle. He was fishing with Parker Pence.

Miss Eccles to Wed.

OGDEN, Utah, Sept. 1.—(AP)—Miss Florence May Eccles, daughter of Marriner Stoddard Eccles, chairman of the federal reserve board, and Mrs. Eccles will be married to Harold J. Steele, son of Mr. and Mrs. James Hardy Steele of Idaho Falls, Idaho, tonight at the Ogden Golf and Country club.

# Record Sales Gains Have Made Larger Quarters Necessary —



Typical White logging truck owned by W. K. Nixon, of Coquille, and loaded with 4,100-feet of white cedar. Because Whites do the hard jobs well, they do every truck job better.

W. W. Abbey, Inc.  
Distributor of  
**White & Indiana**  
TRUCKS

Is now located in one of the finest and most modern truck sales and service buildings in Southern Oregon at

9th and Bartlett

SOUTHERN Oregon truck owners have paid the new White and Indiana Trucks the finest compliment there is in business. They have bought them in such ever-increasing numbers this year that we have been forced to move into much larger quarters.

We appreciate the business that has made this move necessary and are showing our appreciation by equip-

ping our new building with the most modern facilities for serving our customers efficiently and economically. You are cordially invited to visit Medford's new "Truck Headquarters." Let's get acquainted—and let us make you acquainted with the biggest truck values on the market today. There's a White or Indiana model for every purse and purpose.

## WALTER W. ABBEY, INC.

Corner 9th and Bartlett.

Phone 303

"TRUCK HEADQUARTERS IN MEDFORD"

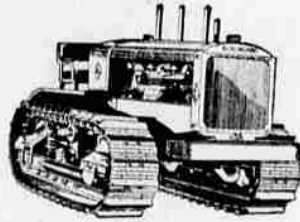
To Walter W. Abbey, Inc.:

We congratulate you and your progressive organization on the completion of the new home of Walter W. Abbey, Inc., Medford, Oregon.

The building of this new edifice is truly the accomplishment of real enterprise and aggressiveness.

We take this opportunity to express our thanks to you for the fine manner in which you have represented our line of tractors and equipment in Southern Oregon and Northern California and extend our best wishes for your continued prosperity.

ALLIS-CHALMERS MANUFACTURING CO.  
Tractor Division, Portland Branch



We invite you to see our complete line of

## Allis-Chalmers Tractors Road Machinery Power Units • Implements

At Walter W. Abbey's new show rooms

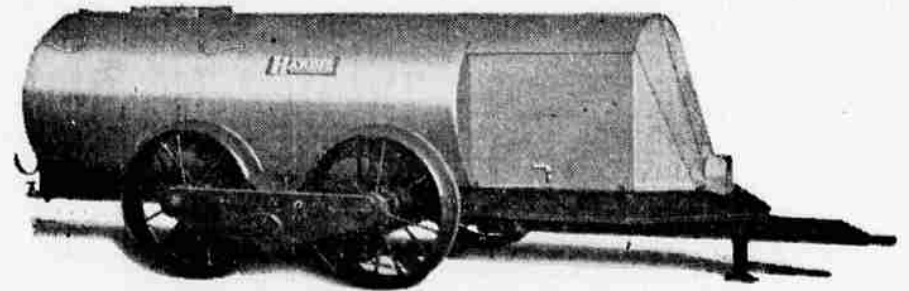
Let them give you the facts

**ALLIS-CHALMERS**  
Tractor Division—Portland Branch

# WALTER W. ABBEY, Inc.

Greetings and Congratulations

We are proud to have you represent us in this famous Medford Fruit District, and know your standing and service will match the quality of



## HARDIE'S GREAT

Tandem Wheel Tractor Trailer Sprayer Leads In Design and Construction. POWERFUL, STURDY and PRACTICAL.

Sizes and models to meet every spraying requirement

# The Hardie Manufacturing Co.

1435 N. W. Northrup St.  
Portland, Ore.