

# AUTHENTIC LORE OF OLD MEXICO GETS NEW LIFE

Atmosphere of Long Ago Is Revived in Pomona Valley, Calif., School Project — Travelers Attracted

CLAREMONT, Cal.—(UP)—Nestling in an old olive orchard in historic Pomona valley east of Los Angeles is one of the world's strangest educational projects, the Padua Hills Institute for Mexican students.

The authentic atmosphere of Old Mexico and early California has been recreated in bustling southern California so well that world travelers and local residents are visiting in increasing numbers.

Perhaps the most unusual phase of the school is the presentation of plays in Spanish, designed exclusively for patrons who know only English. The acting and settings are so well enacted that the difference in language does not hinder the unfolding of the play's theme.

Since there have been no plays written in Spanish for English audiences, a central idea and story outline is selected and then each actor contributes dialogue, songs and dances during rehearsals which seem appropriate to the role.

Gaiety Not Forced. This produces a simple, sincere quality of naive naturalness, spontaneity and gaiety to the players that is seldom found in a theater.

Audience seats included in the play-festivals and informal unheated conversation as the play unfolds. All the actors mingle with the audience in the theater and dining rooms to receive the famous hospitality of the early Mexicans.

Mrs. Bess Garner, founder and director of the theater, has made many trips into Mexico with her staff heads in search of folklore, legends and historical incidents upon which to base the plays. She has brought back many colorful costumes from the provinces for the plays.

About 40 young Mexicans, ranging in age from 14 to 25, and many coming from the pioneer families who settled California, live in cabins and dormitories near the theater. They receive instruction in English, Mexican folklore, music and dancing.

Spanish and the customs of their native country. All are required to work part time, either in the dining room, kitchen, on weaving, music and sewing projects, or in the extensive gardens and grounds.

The background of the theater is as romantic as its present day fame. Mrs. Garner, mother of three sons, and wife of a wealthy manufacturer, knew nothing of dramatics, the theater or Mexicans until 1930, when she and her husband joined other friends in developing a 200-acre tract of land in the foothills north of Claremont, home city of Pomona college and Scripps college for women.

Cultural Center Visualized. Visualizing a cultural center in connection with the colleges, the name Padua Hills was chosen for its significance to Padua in Italy, one of the oldest university towns of Europe. San Antonio de Padua is the patron saint of the Italian city and here the nearby mountain peak, San Antonio, familiarly known as Old Baldy, seemed as if waiting to be a patron saint for someone. Hence the name Padua Hills.

Early plays were presented in English by the Claremont Community Players after the Garners built a theater which was surrounded by craft shops and gardens. In 1932, the Mexican helpers in the kitchen were discovered rehearsing little original plays in Spanish and the idea of Mexican drama was evolved. Week-end appearances were staged in Spanish, and week-day plays were produced by the famous Pasadena Community Players until 1935, when a full program of Spanish plays was introduced.

Juan Matute, assistant director of the theater, came from Mexico to work his way through Pomona college, and became identified with the theater from its beginning. He is descended from the Spanish colonizers sent into Guadalupe about 1840.

Early Families Represented. Many early families of California are represented here. Hilda Palomares Ramirez, 20, traces her lineage to Don Ygnacio Palomares, whose family settled the vast San Jose rancho, now known as the Pomona valley.

Eduardo Carrillo Turley, 22, from Santa Barbara, is a cousin of Leo Carrillo, screen actor and a descendant of the early Carrillos in Santa Barbara. Juanita Pico is related to Gov. Pio Pico, the last Mexican ruler of early California, and now teaches school when not attending the institute.

Amador county of California was named for the grandfather of Casilda Amador, 19-year-old seniorite, whose Eduard Montano is from an early family of the Pomona valley. About one-third of the students were born in California and two-thirds in Mexico. Only the most talented and exceptional are chosen from the heavy application lists.

CLAREMONT, Cal.—(UP)—Nestling in an old olive orchard in historic Pomona valley east of Los Angeles is one of the world's strangest educational projects, the Padua Hills Institute for Mexican students.

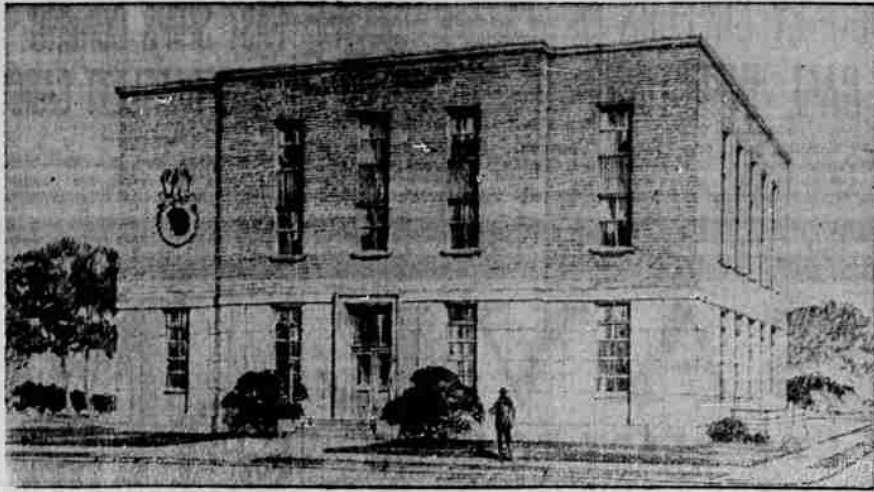
The authentic atmosphere of Old Mexico and early California has been recreated in bustling southern California so well that world travelers and local residents are visiting in increasing numbers.

Perhaps the most unusual phase of the school is the presentation of plays in Spanish, designed exclusively for patrons who know only English. The acting and settings are so well enacted that the difference in language does not hinder the unfolding of the play's theme.

Since there have been no plays written in Spanish for English audiences, a central idea and story outline is selected and then each actor contributes dialogue, songs and dances during rehearsals which seem appropriate to the role.

Gaiety Not Forced. This produces a simple, sincere quality of naive naturalness, spontaneity and gaiety to the players that is seldom found in a theater.

# Plans Drawn for Lakeview Postoffice



LAKEVIEW POSTOFFICE

LAKEVIEW—(UP)—Lakeview's modest skyline will undergo improvement with the completion of the recently authorized postoffice.

Government designs have reached the city to show officials what they can expect for the \$150,000 federal appropriation. Cost of the building may not take the whole sum, the government announced.

The three-story building will have exterior walls reinforced with earthquake resisting material. It will be

brick faced with granite steps and decorative lighting standards at the main entrance.

The structure will house the postoffice, Fremont forest service, land office and the county agent's headquarters.

Beautiful reproductions of early Mexican weaving are made on the school looms by Maria Prado and her assistants. The handiwork of the students and collections made by Mrs. Garner have given the theater one of the finest wardrobes of Mexican costumes in the United States.

The collection is noted for its completeness from the provinces of Yucatan, Vera Cruz and Tehauntepec. Special summer classes were conducted last year for students from the Claremont colleges.

**Dog Hero Dies In Bout With Rattler**  
SHOSHONE, Idaho, Aug. 5.—(AP)—Nigger, the snake-killer is dead, and if there's a dog heaven he'll surely make the grade.

Reared in a rattlesnake country, the dog, a pet at the J. A. Warrington ranch, had many dead "rattlers" to his credit. But when one coiled up before Mrs. Warrington and her two grandchildren, Jean and Marjorie, this week, Nigger leaped recklessly to their aid and was struck several times on the jaw before he killed the reptile. First aid efforts failed to save the dog's life.

**Hoover, Jr., Unaware Of Oregon Oil Lands**  
PORTLAND, Aug. 5.—(AP)—Herbert Hoover, Jr., son of the former president, said yesterday he was unaware of any oil beds in Oregon or other sections of the northwest.

He visited Portland on a vacation trip through Oregon, his father's "old home state."

Hoover, president of the United Geophysical company of Pasadena, described geophysical engineering as a new science for charting and mapping the strata by underground echoes started by small dynamite explosions.

Pepys' diary, invaluable as a record of the court and times of Charles II, was written from 1660-68.

Fish were spotted previously when individuals splashed from the water into the beams of huge searchlights, or by their phosphorescent glow.

"We haven't located any really big schools yet, but the mystery of where the schools were before our experiment started is solved," Gardner said.

He said a "patch" of pilchards measuring 30 by 150 feet represented about 200 tons, and the schools have been known to cover an acre.

Nicotine has no aroma and does not affect the flavor of tobacco.

The pain of a bee's sting is caused by formic acid.

# Meteorological Report

August 5, 1937.  
Forecasts.  
Medford and vicinity: Fair tonight and Friday; not much change in temperature.

Oregon: Fair tonight and Friday; considerable cloudiness in northwest portion and off coast; slightly cooler in interior of northwest and warmer in northeast; cooler in east portion. Friday: moderate northwest wind off coast.

Total monthly precipitation, non-deficiency for the month, none.

Total precipitation since September 1, 1936, 16.85 inches. Deficiency for the season, 0.99 inch.

Relative humidity at 5 p. m. yesterday, 12%; 5 a. m. today, 73%.  
Sunrise tomorrow, 5:09 a. m.  
Sunset tomorrow, 7:24 p. m.

Observations taken at 5 a. m., 130 Meridian Time.

CITY	High Temp. Last 24 Hours	Lowest Temp. Last 24 Hours	Precipitation Part 24 Hours	Weather
Boise	100	54	—	Clear
Chicago	84	64	—	Clear
Denver	96	60	—	Clear
Eureka	98	50	—	Clear
Helena	96	51	—	Clear
Los Angeles	96	58	—	P. Cdy
MEDFORD	92	60	—	Clear
New York	88	68	—	Cloudy
Portland	86	70	—	Clear
Reno	98	78	—	P. Cdy
Roseburg	100	62	—	Clear
Salt Lake	96	48	—	Clear
San Francisco	74	54	—	Clear
Seattle	82	62	—	Cloudy
Spokane	84	54	—	Cloudy
Washington, D.C.	88	72	—	Cloudy
Yakima	98	62	—	Cloudy

Use Mail Tribune want ads.

# FARM SOLIDARITY IS WALLACE PLEA TO AID PROGRAM

Mutual Understanding Necessary Says Secretary — Seven Fundamental Principles Are Outlined.

CALDWELL, Idaho, Aug. 5.—(AP)—Secretary of Agriculture Henry A. Wallace made a plea for farm solidarity among agriculturists of the entire nation in an address today before the Dairymen's Cooperative creamery here.

"A sound agricultural policy can be sustained in this country only on the basis of mutual understanding of farm groups and solidarity among them," Wallace said. "If farmers split into regional warring camps, the hope of a sound and enduring agricultural program is dim."

Wallace outlined seven fundamental principles of agriculture: Farmers should have a share in the national income which will give the average farmer as much purchasing power as the average non-farmer.

Welfare of all farmers demands that wide fluctuations in supply and price of the major crops be evened out so far as possible by the use of ever-normal granary and crop insurance.

People who live on the land must have security of tenure.

Soil must be conserved for the sake of future farmers and future city people.

Farmers must come into control of those marketing, processing, purchasing, and service functions for which they are capable of displaying superior business efficiency—cooperatives.

Family Farm Best. Family-sized farms should be favored by the federal rules having to do with benefit payments and other such aids to rural income.

Federal and state money should continue to be spent to promote agricultural research and better farm efficiency.

"These unifying principles for which we should all continuously battle should serve not only the welfare of farmers but the welfare of the entire nation," Wallace continued.

He told the Idahoans that Senator James P. Pope, (D, Idaho) "has been a steady, constructive force in behalf of farm unity."

Wallace accused the "old guard" of attempting to destroy farm solidarity and "farm security determines the national direction."

Group interdependence has become the cornerstone of the new economy. It is the job of the people who live on the new frontiers—such as Idaho—to find new ways and means of making the economic wheels go round without friction or regional and national depression.

The way to get at local problems is to get at national problems, and tie the two together.

Wallace outlined seven fundamental principles of agriculture: Farmers should have a share in the national income which will give the average farmer as much purchasing power as the average non-farmer.

Welfare of all farmers demands that wide fluctuations in supply and price of the major crops be evened out so far as possible by the use of ever-normal granary and crop insurance.

People who live on the land must have security of tenure.

Soil must be conserved for the sake of future farmers and future city people.

Farmers must come into control of those marketing, processing, purchasing, and service functions for which they are capable of displaying superior business efficiency—cooperatives.

Family Farm Best. Family-sized farms should be favored by the federal rules having to do with benefit payments and other such aids to rural income.

Federal and state money should continue to be spent to promote agricultural research and better farm efficiency.

"These unifying principles for which we should all continuously battle should serve not only the welfare of farmers but the welfare of the entire nation," Wallace continued.

He told the Idahoans that Senator James P. Pope, (D, Idaho) "has been a steady, constructive force in behalf of farm unity."

Wallace accused the "old guard" of attempting to destroy farm solidarity and "farm security determines the national direction."

Group interdependence has become the cornerstone of the new economy. It is the job of the people who live on the new frontiers—such as Idaho—to find new ways and means of making the economic wheels go round without friction or regional and national depression.

The way to get at local problems is to get at national problems, and tie the two together.

# Tucker Appointment Told In A. P. Story

This paper inadvertently failed to mention that information published Wednesday regarding the appointment of William P. Tucker to the office of librarian for the state of Washington was procured from The Associated Press.

# LAFFERTY PROMOTED BY SOUTHERN PACIFIC

Promotion of C. D. Lafferty, assistant general freight agent for the Southern Pacific company at Portland to the position of industrial agent for the company at San Francisco, has been announced by H. W. Klein, general freight agent at Portland.

Lafferty will be succeeded by Frank A. Smith, now an assistant general freight agent in San Francisco.

Lafferty joined Southern Pacific in June, 1912, upon his graduation from Oregon State college, starting in station service at Corvallis.

Each cyclist wrote out a description of his bicycle, including the condition of lights and signal devices.

When a bicycle passes examination, the owner is given a "bicycle permit," which he carries with him whenever he rides. An aluminum non-rust license plate also is issued at 25 cents cost.

The department gives each registrant a printed book of safety rules.

Tattooing is regarded as a fine art in Burma.

SYPHILIS CAN BE CONTROLLED

Syphilis strikes one out of ten adults. Each year more than one-half million people in the United States consult a doctor for recently contracted syphilis.

An equal number contract syphilis each year but do not consult a physician until the late crippling forms of the disease develop.

Syphilis can be controlled only when the infected person is properly treated. Consult your physician.

Insulin 10 c.c. U 40 is \$1.13. Of course we give S. & H. Green Stamps.

Heath's Drug Store, phone 584.

Board Your Pets at the Humane Society Shelter

Summer Rates—We Call and Deliver

Midway Road Phone 1512

# BICYCLES REGISTERED FOR SAFETY IN EAST

LYNN, Mass. (UP)—Some 1,400 Lynn school children have registered their bicycles with the police department's traffic bureau as a safety measure—believed the first in New England city to have such a movement.

Each cyclist wrote out a description of his bicycle, including the condition of lights and signal devices.

When a bicycle passes examination, the owner is given a "bicycle permit," which he carries with him whenever he rides. An aluminum non-rust license plate also is issued at 25 cents cost.

The department gives each registrant a printed book of safety rules.

Tattooing is regarded as a fine art in Burma.

SYPHILIS CAN BE CONTROLLED

Syphilis strikes one out of ten adults. Each year more than one-half million people in the United States consult a doctor for recently contracted syphilis.

An equal number contract syphilis each year but do not consult a physician until the late crippling forms of the disease develop.

Syphilis can be controlled only when the infected person is properly treated. Consult your physician.

Insulin 10 c.c. U 40 is \$1.13. Of course we give S. & H. Green Stamps.

Heath's Drug Store, phone 584.

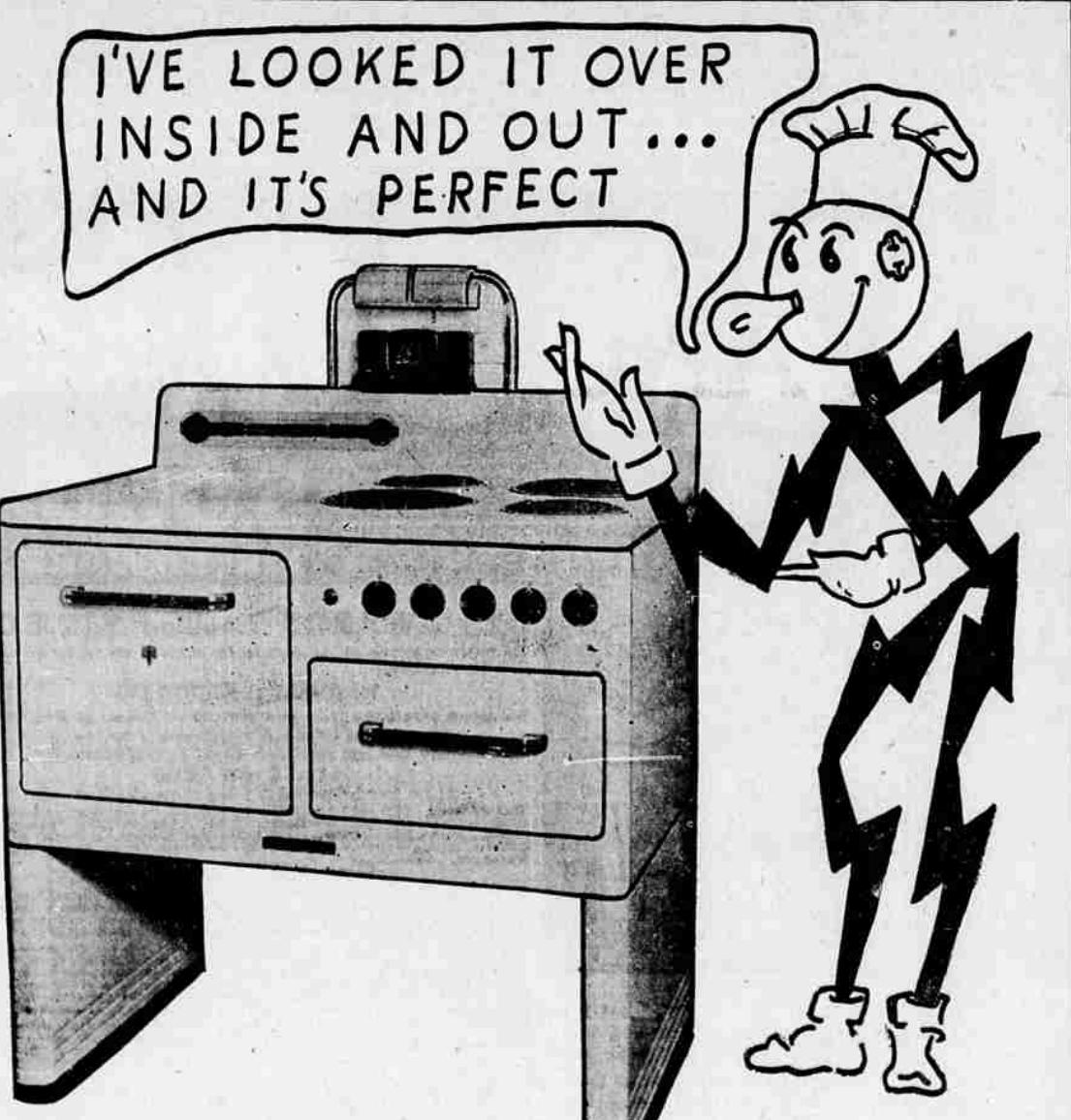
Board Your Pets at the Humane Society Shelter

Summer Rates—We Call and Deliver

Midway Road Phone 1512

# CHRONIC COUGH

Relieved at once by our herbal remedy tried and tested over thousands of years. Chinese herbs will give you relief—no matter what you are afflicted with—you owe it to yourself to use this opportunity to regain your health. Chan's herbs have restored health to thousands of people—Why not you? Do you have Gas Constipation, Stomach Trouble, Rheumatism, Hay Fever, Frostbite, Trouble, Ulcers, Children's and Women's Gail Stones, Run Down Condition, Sinus Trouble, Asthma, Influenza, Female Trouble, Piles, Chronic Cough, High Blood Pressure, Arthritis, Colitis, Nervousness, Appendicitis, Gonorrhea, Eczema, Heart, Liver, Bladder, Kidneys, Lungs, Blood, Urinary Disorders. Free consultation. Open 10 to 6 P.M. CHAN & CHAN Sat 10 to 4 P.M. Tues.-Thurs 10-12 A.M. Closed Sun/Chinese Med. Co 235 E. Main



# SPECIAL The Last Word in Scientific Cooking Equipment

● This new 1937 model Westinghouse, Automatic Electric Range, has several new and exclusive features never before found in combination on any electric range.

REVOLUTIONARY "ECONOMIZER" UNIT one of these marvelous new type four-heat surface units, making possible savings up to 45% in electric cooking costs, and three additional "Corax" units, making four surface units in all, are regular equipment for this range.

ACID RESISTING COOKING SURFACE PLATFORM contains not only four surface units but large convenient work table space also.

LARGE AUTOMATIC HEAT CONTROLLED OVEN will cook a complete meal, also bake, broil and do all other oven cooking. (Holds a 25 lb. turkey.)

NON-TIP, LOCK-STOP SHELVES WITH SQUARE BARS may be pulled out with a complete meal on them without tipping. Included in the oven equipment is the porcelain enamel broiler pan and rack.

LARGE STORAGE DRAWER, with ample capacity for the utensils used at the range daily. (The drawer may be equipped with a heater for warming dishes and foods at a slight additional cost.)

HANDY APPLIANCE RECEPTACLE, in the back splasher, permits using percolator, toaster or waffle iron on the stove if desired.

BEAUTIFUL CHROMIUM FINISHED LIGHT FIXTURE ideally located for lighting cooking platform.

ULTRA MODERN "CLOCK WATCHER" AND CONDIMENT SET: adds greatly to the beauty and convenience of the range. Finished in ebony with chrome and cardinal trim. (Timer clock to turn oven on and off automatically at any predetermined time may be added.)

FOR ECONOMY OF OPERATION, CONVENIENCE, BEAUTY AND LIFETIME DURABILITY this scientific cooking appliance is supremely outstanding.

A LIBERAL ALLOWANCE WILL BE MADE for your present fuel stove and very easy terms can be arranged if desired.

The California Oregon Power Company

# RESPONSIBILITY



"I'm the guy behind the grease guns! It's my job to keep your car in the 'pink'—free from squeaks and rattles—and all parts lubricated with just the proper amount and grade of oil. ★ Incorrect lubrication causes breakdowns and costly repair bills—so I know how important it is not to miss a single point when I work on your car. ★ That's My Responsibility!"



# RICHFIELD

TUNE IN: RICHFIELD REPORTER — Radio's Finest News Broadcast... 10 P.M. (PST) Every Night (except Saturday) NBC Red Network. OLSEN & JOHNSON with Gertrude Nissen and Jimmy Grier's Orchestra... 7:30 P.M. (PST) Every Wednesday, NBC Red Network.

**FULL QUARTS**  
Salem Beer  
IT'S THE BEER  
Salem Brewery Ass'n, Salem