

MEDFORD MAIL TRIBUNE

"The voice in Southern Oregon South the Mail Tribune." Daily except Saturdays. Published by MEDFORD PRINTING CO. 28-37-13 N. Fir St. Phone 15.

ROBERT W. RUIHL, Editor. HENRY R. GILSTRAP, Manager. An Independent Newspaper. Entered as second-class matter at Med. Ore. under Act of March 3, 1879.

SUBSCRIPTION RATES: Daily, in Advance: \$4.00; Daily, six months: \$22.00; Daily, one month: \$1.00.

MEMBER OF THE ASSOCIATED PRESS. MEMBER OF THE UNITED PRESS.

Advertising Representative: WEST-HOLIDAY.

MEMBER OF THE ASSOCIATED PRESS. MEMBER OF THE UNITED PRESS.

MEMBER OF ADVERTISING BUREAU OF CIRCULATIONS.

Ye Smudge Pot. By Arthur Perry.

What the esteemed Salem Statesman designated as "mayhem with malice," was staged Monday eve, without a customer being hit with a whiskey bottle, where he should wear a tin-hat.

DOUBLE-JOINTED INDIGNITY (Oshland (Call.) Tribune). "When a Democrat, who has been an honor to his party and a credit to his country, objects to a hand-picked Supreme Court, some admirer of the so-called Brain Trust tries to insult him by calling him a Republican and some think they can insult him by calling him a Southern Gentlemen."

The Portland team is acting like one, causing considerable local excitement and raptures.

The Older Girls who have started knitting things for Christmas, are not so smart. Knitting has started plans for a ski slide next winter, and the sister city of Ashland announces a bigger Fourth of July celebration than ever next year.

Hitch-hikers are reported organizing in Texas. The veterans and survivors of giving them a ride should do likewise, and, for the sake of variety in the news assault and rob a hitch-hiker.

DON'T MENTION IT! (Fond Du Lac (Wis.) Journal). "Thanks. We wish to thank all the neighbors, friends and relatives who so kindly assisted us in the recent destruction of our home by fire—Mr. and Mrs. Simon Birschbach and family."

Fancy writers of the metropolitan are now discussing at great length, whether or not, as the result of his defeat on the court pack plan, the President will be able to regain his lost popularity.

The Mayor of Portland is complimented by the Governor for "bitting-the-nail-on-the-head" in a discussion of an administrator for Bonville Dam power.

"IDENTITY DOUBTED BY POLICE CHIEF"—(Hidline Red Bluff (Calif.) News)—Come on, chief! Be Yourself!

Citizens will have an opportunity this week-end to behold a hypnotist at the G. Hunt playhouse. He performs his wonders without promising the audience a corner lot in Heaven, free electric lights, government beans money, and no end of pin-ball money.

OVERLOADED TRUCK BRINGS \$7.50 FINE. Herbert Lee Trowler, driver for the Farm Truck Lines, charged with overloading a truck, was fined \$7.50 and costs in justice court yesterday on a plea of guilty.

Donations Not Income. "Never, under any administration," he said, "has the bureau of Internal Revenue considered as income the value or proceeds of services donated in good faith to charity."

WAKE UP YOUR LIVER BILE. Without Calomel—And You'll Jump Out of Bed in the Morning Rarin' to Go.

DRINKS NEVER TASTE THIN WITH Gordon's Gin.

Feel at Home in "The Heart of Portland" Comfort—Convenience Courtesy Service Attractive Rates:

Hotel Cornelius. 523 S.W. Park Portland.

Detached bath—\$1.00 up With bath—\$1.50 up.

IN THE HEART OF THE CITY.

Give the Devil His Due

WE realize this will not please those who enjoy using John L. Lewis as a punching bag. He is a convenient symbol for all that is undesirable in the labor movement.

Nevertheless we believe in even giving the devil his due. And when John L. shows good sense, a disposition to make a conciliatory gesture and calm the troubled waters, we are for him and believe he deserves a hand.

IN issuing a public statement, declaring neither the "check-off" nor the "closed shop", are essentials in his program, Mr. Lewis, for the first time in our recollection, assumes such a role.

Coming from such a source, this declaration can't fail to have far reaching consequences. For both the "check-off" and the "closed-shop" have been for many years, two of the chief stumbling blocks towards any working agreement between capital and labor.

THE "check-off" in brief compelled the employer to pay the union dues of his employees,—deduct the necessary amounts, each month, to keep the union treasury full and the members in good standing.

The second is the more important regulation, but taken in combination with the first, it places the employer not only at the mercy of the union, but makes him an unwilling contributor to a condition, that he regards as little better than involuntary servitude.

To scratch them both from the list of imperatives in the labor creed, clears the atmosphere at once, and marks a long step toward, what all right thinking citizens in the country desire, PEACE instead of WAR, between the forces of labor and capital in this country.

OF course it is well not to be too sanguine. The admission that these two proposals are not essential, does not mean that the principles they embody will be abandoned.

But coming from the "All Highest" in radical labor circles, the admission DOES make it extremely unlikely that in the future, any serious strikes will be carried on, based on either of these issues.

And with these two sources of friction removed, a large area of potential trouble would be eliminated.

SO give the devil his due. When John L. wrong—which is most of the time, as we see it,—we are against him. When he is right—as he is in this instance—we are for him.

WE regard it as PARTICULARLY important that the disposition to interpret this gesture, as a sign of weakness, and therefore a signal to organized capital to press their advantage be strongly resisted.

THERE'S nothing weak about John L. Lewis. He is a strong man,—essentially a fighting man,—but he is also an intelligent one. He is intelligent enough to realize the time has come to reef the labor sails here and there,—not to be too tough with the opposition,—lest a storm of public indignation be aroused, which will sink the labor craft entirely.

He is acting in the interest of labor of course. But it is ENLIGHTENED self-interest. And it is highly important that it be so recognized.

Failure to do so,—failure to meet a conciliatory move on one side by a similar spirit on the other, would be to miss a golden opportunity.

FOR when all is said and done the only hope of peace in the labor-capital field is a spirit of give and take on BOTH sides; a determination to look at the other man's point of view, as well as your own; and working together on the part of all factions, toward the betterment and advancement of the entire country.

SO when a representative of either side steps forward, in this direction,—whether you like the cut of his facial jib or don't,—don't be a fool—don't kick him in the shins and try to tweak his whiskers,—welcome the extended hand, and extend your own.

This isn't Polyanna doctrine, its merely good sense, good citizenship and meeting enlightened self interest on ONE side, with enlightened self interest on the OTHER.

For unless this industrial war is stopped,—and only a different spirit on both sides can do that—then it can only end as all wars in this modern age must end,—in mutual destruction and disaster!

CITE PRECEDENT IN EXPLANATION MRS. F. R.'S TAX

Donations Not Income. "Never, under any administration," he said, "has the bureau of Internal Revenue considered as income the value or proceeds of services donated in good faith to charity."

The justice department officials were chief of the international revenue legal unit when the ruling, in Mrs. Roosevelt's case was made in 1934.

performers personally benefited from them. Aside from \$1 to make the contract binding, Jackson said, the president's wife received no benefit measurable in terms of money from her broadcasts.

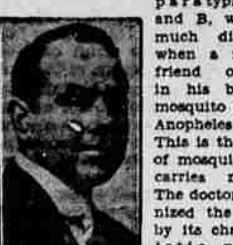
Bureau Diligent. He added the internal revenue bureau has been diligent to see that his position on charitable performance "was not abused as a cover for an assignment of income, or an order to pay income to third persons, which was in substance an avoidance of taxes."

Jackson said, however, it was not always easy to draw the line. In each case, he said, it must be determined whether the transaction actually was a donation of services without income.

Personal Health Service

By William Brady, M. D. Signed letters pertaining to personal health and hygiene not to disease diagnosis or treatment will be answered by Dr. Brady if a stamped self-addressed envelope is enclosed. Letters should be brief and written in ink.

PROPHYLAXIS AGAINST MALARIA. Travelling from Mexico City up to Orizaba recently, secure in the knowledge that we were immunized against smallpox and against typhoid and paratyphoid A and B, we were much disturbed when a medical friend observed in his berth a mosquito of the Anopheles bred.



pendicular to the surface on which the mosquito alights. We were uneasy because we had not taken any quinine. Of course, not every Anopheles mosquito carries an assortment of malarial plasmodia.

Residents in districts known to be malarial may take the regular prophylactic dose of quinine, ten grains daily, and remain immune, but they can't keep this up indefinitely.

Modifications or improvements on quinine have been introduced with the usual claims of superior therapeutic effectiveness and freedom from untoward effects, but on putting these newer remedies to the test of actual practice the results, again as usual, have not borne out the promise made for the new medicine.

NEW YORK Day by Day by O.O. McIntyre. NEW YORK, July 28.—Artists take residential root more than almost any other class.



ago he has made several changes but never moved eight blocks away. Finally he bought a private residence on West 75th street, a stone's toss from the Schwab mansion where he is parked for life.

Gordon Grant, the marine painter, has been 20 years on East 68th street with a pent studio. Charlie Palla, the artist with bangs, is faithful to 23rd street near 5th avenue.

But the real artistic loyalists live in the block on West 67th street running off Central Park West.

Lowell Thomas has become the Wonder Man, physically, of the writing trade aside from the admiration he elicits for enormous and varied output.

WAKE UP YOUR LIVER BILE. Without Calomel—And You'll Jump Out of Bed in the Morning Rarin' to Go.

What are the symptoms of tuberculosis, both externally and internally? I have had a peculiar feeling.

Answer—You are going at it in the wrong way. Instead of trying on assessments or job lots of symptoms, you should rectify your symptoms to your doctor and leave it to the doctor to decide what, if anything, may be the matter.

QUESTIONS AND ANSWERS. Tuberculosis. What are the symptoms of tuberculosis, both externally and internally? I have had a peculiar feeling.

Answer—Send three-cent-stamped envelope bearing your address, and ask for instructions for treating headaches and pimples—same.

Ed Note: Persons wishing to communicate with Dr. Brady should send letter direct to Dr. William Brady, M. D., 255 El Camino, Beverly Hills, Calif.

eating places—with a select clientele—is Chris Cella's in the East 40's. Without pretense, decoration or menu. The waiters merely bubble with enthusiasm for dishes of the day.

One reason for New York's apparent coldness toward the stranger is its suspicion—bred by many years of having been victimized by petty shakedown.

WITH all their faults (and they have many) American newspapers are the most accurate in the world. But they will no longer be accurate if a censor ever gets his fingers on them.

A HEADLINE worth reading and heeding: "Pair Slug Samaritan. Kindly Motorist Victim of Hitch-Hikers; Auto Stolen by Two Ingrates."

THERE are few motorists so hard-boiled as not to have felt the kindly impulse to pick up somebody walking along the road and take him in the direction of his destination.

THE important facts are these: Gordon's Gin has Liqueur Quality and High Proof, 94.4. That means richer flavor—velvety smoothness—drinks that never taste thin.

DRINKS NEVER TASTE THIN WITH Gordon's Gin. 100% Neutral Spirits Distilled from Grain.

not cause alarm. But in New York such a request might be answered with a door slam in the face. Too many who have acquired have found themselves suddenly looking into the business end of a blued steel revolver.

I am a push-over for ice cream blobs on a stick and sturdy indigestibles hawked by windy uniformed lads on Riverside Drive and along the countryside.

Reating on a park bench after a walk with the dog the other afternoon, I felt something land on my shoulder. It was a friendly squirrel.

Comment on the Day's News. By FRANK JENKINS. MOST astonishing development of the week: C. O. SHARPLEY CRITICIZES the Roosevelt administration for its labor policies!

WHAT did C.I.O. expect the administration to do? Call out the army and navy to close all plants and force all workers into C.I.O., whether they wanted in or not?

AS these words are written, which is several hours before they will be read, both the insurgents and the loyalists claim big successes at Madrid.

WITH all their faults (and they have many) American newspapers are the most accurate in the world. But they will no longer be accurate if a censor ever gets his fingers on them.

A HEADLINE worth reading and heeding: "Pair Slug Samaritan. Kindly Motorist Victim of Hitch-Hikers; Auto Stolen by Two Ingrates."

THERE are few motorists so hard-boiled as not to have felt the kindly impulse to pick up somebody walking along the road and take him in the direction of his destination.

THE important facts are these: Gordon's Gin has Liqueur Quality and High Proof, 94.4. That means richer flavor—velvety smoothness—drinks that never taste thin.

DRINKS NEVER TASTE THIN WITH Gordon's Gin. 100% Neutral Spirits Distilled from Grain.

IN OREGON - 1 30 4 5 QUART - 85¢ PINTS. Code No. 5258 Code No. 5256.

DISTRIBUTORS: Perrett & Company, San Francisco, Los Angeles, Portland, Seattle. Copyright 1937, Gordon's Dry Gin Co., Ltd., London, N. J.

Another interesting headline: "Mussolini, in Editorial, Predicts War." (Mussolini, you know, is a journalist, as well as a dictator.)

Flight 'o Time. Medford and Jackson County history from the files of the Mail Tribune 10 and 20 years ago.

TEN YEARS AGO TODAY. July 28, 1927. (It was Tuesday.) First home-grown cucumbers appear on the market.

Raymond Miksche and family move into their new home on South Holly street. Toggery Bill has a force of men at work on his home on Rogue river.

Prospect forest fires continue menacing and out of control. Elks lodge purchases picnic grounds on Rogue river.

Judge E. E. Kelly leaves Saturday to take a physical examination for an army officer. Pair who robbed Phoenix postoffice sent to prison.

News Behind The News. (Continued from Page One.) This attempt to sell Puerto Rican lure to the world, one pertinent question.

Are the charms of Puerto Rico worth their salt? The people don't know it yet, but the way the proposition is to be paid is by a tax on salt.

STARTLING SAVINGS IN GAS AND OIL! FROM the tailoring of the upholstery to the paint finish twelve coats deep, every detail of the 1937 Studebaker gets a full measure of the painstaking care for which Studebaker is world famed.

It's the world's first car with doors that click lightly, tightly and silently! It's the year's standout car in restful riding and simple efficient ventilation! And with its built-in Fram oil cleaner and automatic overdrive, optional at slight cost, it delivers the gas and oil economy of a lowest priced car!

SANDERSON MOTOR CO. 207 S. Riverside Phone 1385.

Hotel Cornelius. 523 S.W. Park Portland.

IN THE HEART OF THE CITY.

produce its own salt, the levy will be a domestic affair and not of value to any American producer. Hence the protests are not expected to carry too much weight.

The photographs of the gathering, which now have a real collector's value, are those said to have been taken by Representative Jennings Randolph of West Virginia. They display graphically the extent of the island hospital.

The prize snap, however, was not taken by Mr. Randolph, but shows him in all his glory quite dominating the scene, although the president, among others, is one of the group.

The latest ruling of the post office department has given Chairman Kennedy of the maritime commission a few more knots to untie.

The postmaster general says that the United States mail must go on the fastest ships. Since our liners can't compete for speed with boats like the Normandie and the Queen Mary, it means that foreign bottoms are tops as far as mail carrying goes.

The rule, the post office department says, isn't being enforced to the letter, but it's still quite a blow when Mr. Kennedy is spending millions in extra money to shoot some government exp into our own merchant marine. But business is business and the mails must go through.

TOP-NOTCH TASTE-WINNERS IN EVERY ROUND. John L. STRAIGHT BOURBON WHISKEY. OLDTIME DISTILLERS, INC., N.Y.C. Distilled in Illinois. Trademark Reg. U. S. Pat. Off.

Let us install Outlets where you need them. OLSON ELECTRIC. Phone 115. 3 N. Bartlett.

What a lot more STUDEBAKER'S LOW PRICE TAG GIVES YOU.

JUST A LITTLE MORE MONEY THAN A SMALL CAR.

But see this Studebaker and drive it. Try out the automatic hill holder—the dual range steering that halves the turning effort of parking. Very possibly the value of your present car will be all the down payment you need for a big new Studebaker.

Hotel Cornelius. 523 S.W. Park Portland.

IN THE HEART OF THE CITY.