

ROGUE DAIRYMEN OPPOSE CUTTING FAT PRICE, CLAIM

Smith River Creameryman Says Meeting Called for Crescent City Is Designed to Oust Competition.

GRANTS PASS, July 13.—(AP)—Farmers of Josephine and Jackson counties who sell cream in California strongly oppose an Oregon proposal to cut the price they receive for butterfat, William Doda of Grants Pass declared today.

Doda is local representative for the Del Norte Milk Products company of Smith River, Calif., one of the two California creameries which send trucks through the Rogue River valley. He declared that a meeting of creamerymen from southern Oregon and northern California, announced by the Oregon department of agriculture at Crescent City, Calif., July 20 is designed to drive competition from the local field and that "Rogue River valley creameries tried to get rid of us for the last four years."

EDUCATION ADVISERS OF MEDFORD CAMPS AT CCC CONFERENCE

J. D. Mickle, chief of the Oregon division of foods and dairies, announced the meeting last week, saying that Oregon producers receive more money from California creameries because they do not have to comply with the Oregon law, which he said is stricter than California's.

The higher price paid by California is unfair to Oregon creameries and to the producers who sell to Oregon creameries, Mickle said.

Doda said he doubted if Oregon laws could "hold a candle" to the California laws.

He declared quality and price of butterfat had risen in the Rogue River valley since California creameries entered the market.

Price Aid Seen.

"Four years ago, butterfat was selling in the valley as much as five cents below Portland prices," he said. "Where the creameries picked up the cream, the producers were charged one-half cent a pound to have it hauled to the creamery."

As low as 17c a pound for butterfat was paid to the producer while the consumer was charged 28c a pound for butter. Now the price is one or one and a half cents above Portland prices and butter is selling at not more than five cents more than the price for butterfat.

Doda said his company alone picks up cream from an average of 150 producers for a total of 13,000 pounds average of butterfat per month, excluding the Illinois valley district of Josephine county gathered by another truck. He said the company had operated for the past six years in the two counties and now goes as far east as the Ashland territory.

CRUCIAL BATTLES ON SOFTBALL LIST

Games Tonight.

Commercial league: Timber Products vs. Lamports. Jennings vs. Office Boys.

HUMRS vs. Catholic Men.

Commercial league softball schedule will be resumed tonight at the high school football stadium with three crucial battles slated. There will be no Service league encounters, the first half of that circuit's program being completed Friday.

Timber Products and Jennings Fire company, co-headers of the league lead with five wins and no losses, will tangle with Lamports and the Office Boys, respectively, in battles that may see one or both of the pace-setters knocked off. The Catholic-HUMRS fray is a hotover from last night's postponed games because of the wrestling matches.

FOUR AUTOISTS FINED FOR IMPROPER LIGHTS

Four local autoists, one of Central Point, and one of Klamath Falls were fined in Justice's court, for improper lights on vehicles. Each was assessed \$1 and costs. They were Benjamin J. Gillinsky, Herman Dressler, Julius Fletcher, Charles O. Wood, all of Medford, toward M. Thompson of Klamath Falls, and Boyd Lawton of Central Point.

James E. Jakeway was assessed \$1 and costs for non-possession of an operator's license.

Closing time for Too Late to Classify Ads is 3:30 p. m.

Josephine Assessor



JAMES J. McFADDEN
James J. McFadden, a Republican, continues in office after many terms as assessor for Josephine county, Oregon.

Salvation Army Buys Old Church From Loan Firm

Adjutant G. R. Durham, of the Salvation Army, announced today that his organization had purchased from the Jackson County Building and Loan association the old First Methodist church property located at the corner of 4th and Bartlett streets. Purchase price was not disclosed.

Adjutant Durham stated that the Army has long considered the property one of the most desirable in the city for its purposes and had considered, on several previous occasions, the purchase of the same, but due to the inability of interested parties to agree on terms of sale the purchase had been postponed.

The building provides adequate facilities for all branches of Army work. It includes a large, well-equipped kitchen and dining room, available for church or relief purposes as needed; office space; dormitory for single transient men; relief clothing commissary and work room; auditorium with seating capacity of 300; Sunday school class rooms; and a modern five room apartment. The property comprises two full lots.

Inasmuch as improvements to the extent of approximately \$1000 were made in the fall of 1935, no extensive improvements are contemplated at this time.

Adjutant Durham and members of the organization, as well as members of the Army's advisory board, composed of local business men and headed by J. C. Collins of the Brown and White agency, expressed themselves as being fully satisfied with the terms of the purchase and very happy that the Salvation Army, which has served Jackson county for more than 30 years, is at last to have a permanent home.

Next Jury Trial Slated August 16.

No jury trials will be held in circuit court until August 16, when the suits of Earl H. Fehl against the estate of the late Ted Helmroth, involving claims for money, and counter-claims, have been set. The actions also involve Corintha E. Stalley, mother-in-law, and Electa A. Fehl, wife of Fehl.

On an affidavit of prejudice filed by Fehl against Circuit Judge Carl E. Wimberly of Roseburg, the supreme court assigned Judge Edwin E. Ashurst of Klamath county to hear the case. A motion filed by Fehl for a change of venue from this county has not been acted upon.

The suits involve rentals allegedly due to Mrs. Stalley on the Pacific Herald building, and the sheriff's sale of West Park street property belonging to the Fehls.

Circuit Judge H. D. Norton is holding court this week in Grants Pass. He is scheduled to hear equity cases here for the next two or three weeks.

\$10 FINE LEVIED FOR SPEED LAW VIOLATION

Lorenzo D. Fox of Grants Pass, charged with violation of the basic speed law on the Pacific highway near Grants Pass, in which he nearly had a collision with a state police car, was fined \$10 and costs in justice court yesterday afternoon. The complaint charged Fox with "willful and wanton disregard for the rights and safety of others on the highway," at a high rate of speed.

Archie C. Gibson of Prospect, charged with assault and battery, in a complaint sworn to by Harry Lemman, was ordered held to await the action of the grand jury, after a half dozen witnesses had testified before Justice Coleman. The case was the result of a personal encounter following an argument between the two men last Thursday.

AUTO SELLER CITED FOR IMPROPER TAGS

Lawrence Hill, auto salesman, charged with selling an auto licensed with void foreign license plates, without removing same, was scheduled to appear in justice court for hearing this afternoon.

Ralph R. Scoville, charged with operating an auto with void foreign license plates, was given a hearing yesterday, and passing of sentence was deferred until July 16. Scoville, court officials said, was arrested at Yreka, Cal., recently on a similar charge.

Scoville purchased the auto from Hill. It developed during the hearing that he could not procure an Oregon license, because of the lack of a certificate of title.

ARMORED AUTOS TAKE NIPPONESE TO CITY'S WALLS

guards atop the city wall reported that two Japanese planes were sighted above Nanyuan this afternoon. They said what appeared to be airplane explosions were seen before the planes departed, presumably for their Tientsin base.

Chinese sources believed the planes may have dropped hand grenades.

Gen. Sung Chieh-Yuan's 29th Chinese route army forced a heavily supported detachment of Japanese troops to retreat toward their Fengtai base after they had been driven back on Peiping's southern wall in two hours of hand-to-hand fighting. The big swords of the Chinese in-

63 PLANES PREPARE TO COMB OCEAN FOR LONG LOST AVIATRIX

(Continued from Page One.)

craft carrier Lexington's deck to survey an area of 36,000 square miles centering about bleak Howland island, which the aviatrix and her navigator, Frederick J. Noonan, missed on a flight from New Guinea.

Officials said the giant carrier, expected to reach the search area by dawn, was hampered last night by a tropical storm which might delay the aerial search.

While the Lexington neared Howland after a journey from San Diego via Honolulu, the coast guard cutter Itasca, pioneer in the vast hunt, headed toward the Gilbert islands, 60 miles west of Howland.

As they retreated, the Japanese were reported to have torn up the railway tracks in the vicinity, halting train service from Peiping.

Another Japanese force was said to have launched a futile attack on Nanyuan itself at the same time the column from the north went into action.

Meanwhile, rioting was reported in the southern Chinese quarters of the city.

WASHINGTON, July 13.—(AP)—Secretary Hull said today he had received a communication from the British government, which was believed to contain a suggestion of the desirability of international consultation concerning the eastern situation.

He declined, however, to disclose the nature or text of the note, or what reply was made by the United States.

The secretary said the communication was received after he had talked yesterday with the Japanese ambassador and the counselor of the Chinese embassy.

He added he believed action already taken here made any further moves unnecessary.

Reliable foreign sources declared 100 Japanese war planes flew over Shanhaiwan, on the border of Manchoukuo and Hopei province, en route yesterday to the scene of action.

The Japanese detachment was advancing on the Nanyuan airdrome and barracks, eight miles south of Peiping, when they were met half way by Chinese troops and gradually driven back on the southern wall before they turned and retreated toward Fengtai, seven miles to the west.

Before wheeling toward Fengtai, the Japanese headquarters and base in the Peiping battle area, they made a determined stand at the railway bridge where the heaviest fighting of the engagement took place. Heavy casualties were reported suffered by both sides.

WASHINGTON, July 13.—(AP)—Secretary Hull said today he had received a communication from the British government, which was believed to contain a suggestion of the desirability of international consultation concerning the eastern situation.

He declined, however, to disclose the nature or text of the note, or what reply was made by the United States.

The secretary said the communication was received after he had talked yesterday with the Japanese ambassador and the counselor of the Chinese embassy.

He added he believed action already taken here made any further moves unnecessary.

EDUCATION ADVISERS OF MEDFORD CAMPS AT CCC CONFERENCE

Thirteen educational advisers from camps of the Medford CCC district are attending a conference at Oregon State college, Corvallis, this week. The conference opened Monday and will continue through Friday.

They are Guy R. Moore, Steamboat; William R. Paulson, Gasquet; Blayne M. Brewer, Oak Knoll; Edgar B. Grimms, Gunter; George Schmidt, Agness; Lelwyn C. Algyer, Applegate; Claude Baker, South Umpqua; Kenneth H. Baker, Wineglass; Leslie L. Ternahan, South Fork; Albert Malley, Annie Spring; Alois Chiarlesworth, Sitkum; John S. Billings, Lava Beds; and William H. Fowler, McKinley.

George H. Fielda, district adviser, will leave here tomorrow to attend the Corvallis conference. He will go from there to Seattle, where he will attend a similar conference at the University of Washington next week.

Ralph B. Hardin, camp adviser at Silver Lake, will also attend the Seattle meet. Dr. Fuller Swift of Orleans and Thomas D. Lewis of Tule Lake returned last week from the conference at the University of California, Berkeley.

\$50 FINE, 30 DAYS FOR CAUSING AUTO CRASH

Pleading guilty to a charge of reckless driving, Ivan Beach, 24, of Talent, was fined \$50, sentenced to serve 30 days in the city jail, and had his driver's license revoked for six months in city court yesterday afternoon by Judge Allen D. Curry.

Beach drove the car that collided with a machine operated by P. F. Boone of 1194 Court street, Saturday night at Riverside avenue and Thirtieth street. As a result of the crash, which demolished both cars, three passengers in the Beach auto were taken to the hospital with painful but not serious injuries.

The Grange

Upper Applegate Grange, Upper Applegate Grange opened Saturday evening, July 10, with good attendance. Betty Hall, Paye Knap, Albert Dutton and Francis Troutman were guests for the lecture hour which was in charge of the ways and means committee.

A short talk was given by Eva McKee on the life and work of Stephen C. Foster. Several of his songs were sung. The evening was closed with refreshments.

ALICE MARBLE EAGER TO TRY WIMBLEDON AGAIN

NEW YORK, July 13.—(AP)—Disappointed with her showing at Wimbledon but eager to go back for another try next year, Alice Marble returned from England on the liner Aquitania today for a series of tennis tournaments which will be eliminated by defense of her national singles title September 2-11 at Forest Hills.

It was disappointed at Wimbledon," said the San Francisco girl, "but not so much that I won't try there again next year."

Closing time for Too Late to Classify Ads is 3:30 p. m.

For Cooking House Warming Water Heating All-In-One

Buy the LANG Patented RANGE



The extension firebox utilizing the famous LANG preheat draft principle, measures 21 inches long by 8 inches wide by 8 inches deep. This permits burning 18 inch to 20 inch wood. The Westwood has the patented double draft solid bottom firebox.

The WESTWOOD has no ash pan allowing the increased 28 inch oven space. Charcoal waste is burned in this firebox.

Ranges may be ordered in nickel trim, in porcelain enamel trim or in all porcelain enamel in choice of white, apple green, sandstone or combination of these colors in two-tone. Ranges may be filled with water coil, reservoir, electric or gas plate.

See the NEW LANG WOOD-ELECTRIC Combination Range

The only combination range with 2 OVENS—one electric, the other wood. This marvelous new Lange creation offers everything in range perfection. Come in and see this sensational new range!

Hubbard Bros., Inc. 335 E. Main Phone 231

MANN'S Save with Safety!

Every Florsheim shoe in stock now reduced

SALE of Famous Florsheim Shoes For Men and Women!

A Nation-wide Florsheim Shoe Sale When All Florsheim Dealers all the U. S. Feature Sensational Price Reductions on Florsheim Shoes.

When you buy shoes during our Florsheim Sale you may be sure of one thing—you're getting full Florsheim quality! Florsheim makes only one quality—the best... and during this semi-annual sale nothing is changed but the price, and of course every style and every price is included. Even the Florsheims with the hinged Feature Arch and the famous Flarewedge.

This Sale Includes the Feature Arch and Famous Flarewedge Models

In the Women's styles are white, blue, brown and black kids. Gabardines, suedes and combinations in Fall and Summer models—Straps, Pumps and Ties... In the men's Florsheims you will find Brogues, Dress Oxfords, light weight Brogues and the famous Florsheim high Railroad shoe—all leathers, all sizes and styles in stock included. Buy your Florsheims now!

\$7.65 Values to \$8.75

\$8.35 Values to \$9.50

\$8.85 Values to \$11.50

Mann's Are Exclusive Florsheim Agents

A Timely Sale of Lovely "Ann Gray" DRESSES

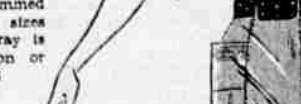
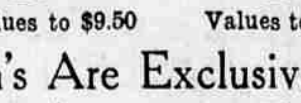
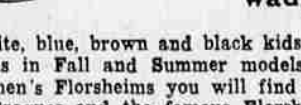
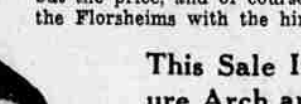
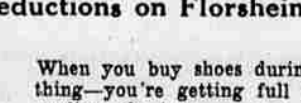
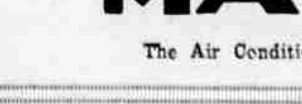
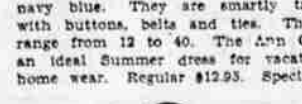
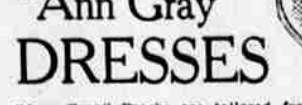
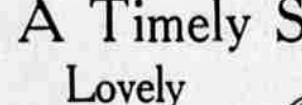
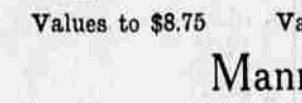
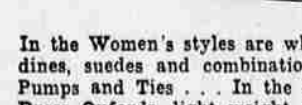
"Ann Gray" Frocks are tailored from fine quality Wash Silks in white, pastels and navy blue. They are smartly trimmed with buttons, belts and ties. The sizes range from 12 to 40. The Ann Gray is an ideal Summer dress for vacation or home wear. Regular \$12.95. Special

\$8.95 Dress Clearance

A July Clearance sale of 50 good looking silk dresses consisting of prints, solid shades and clever combinations. Many crepes, sheers and wash silks in this assortment. Featuring jacket, shirtmaker and dress styles. Regular values to \$8.95.

MANN'S

The Air Conditioned Dept. Store!



FREE DRAPERY MAKE-UP WEEK at MANN'S

Good news for those contemplating new drapes! During this week our drapery dept. will measure, make and hang your new drapes FREE of charge, from all materials selling from 59c per yard and up. Suggested fabrics are 50 in. part linen at 59c yard; 50 in. Printed Twills and Linens \$1 yard; 50 in. Blocked Linens \$1.39 yd; 50 in. Crashes at 79c, \$1.00 and \$1.29 yd.; 50 in. Damasks from \$1.00 to \$1.93 yard.

Drapery Lining SPECIAL

Extra special for Drapery Week. Our regular 39c drapery lining satens for 29c yard. This material is full 50 inches wide. Special

29c yd. Lower Main Floor

Don't Forget... Free Monogramming!

Miss Woltring, monogram expert from Portland, is now in our store with her famous monogram machines. Miss Woltring will monogram Free all Towels, Sheets, Cases, Blankets, Robes, Spreads and other articles purchased here during her stay. Avail your self of this unusual service.

Suggested Articles for Monogramming

Bath Towels... Sheets... Cases... Lunch Cloths... Napkins... Bed Spreads... Blankets... Auto Robes... Bath Robes... Shirts... Pajamas... Swim Suits... Underwear... Linens... Sport Dresses... Scarfs... Sweaters... Blouses... Culottes... Play Suits and Slacks.

\$25 CASH FOR THE MOST ARTISTIC BEARD OR SET OF WHISKERS!

Yes sir! \$25.00 CASH goes to the winner in our unique PIONEER DAYS whisker and beard contest when competition closes on the opening day of our annual PIONEER DAYS SALE... Tod Porter, Carl Bowman and Fred Fry, well-known Medford barbers, will act as judges... Register NOW for this \$25.00 Whisker Contest! Full details at our stores in Medford and Central Point. No employee of Safeway stores eligible.

SAFEGWAY STORES