

AUTOMOTIVE NEWS

Two-Ton Beam Stolen.
CANYON CITY, Colo.—(UP)—Two men were arrested here on charges of stealing a two-ton beam from a marble quarry.

Sandy Says It's a Fact!

WE DO NOT HAVE FIVE FINGERS ON EACH HAND!

And We Can Show It!

You have to hand it to Sandy! Take a look at his reconditioned guaranteed used cars! They look — they ARE good — they HAVE to be good... because they're PLEDGED BACKED!

Open Sundays and Evenings

The New Studebaker

has all five fingers of sterling quality: the world's only rotary latch non-rattle doors, the world's finest all-steel turret-top body, Fram oil-cleaner, automatic over-drive, and automatic hill-holder! The five fingers that identify Studebaker as the finest car ever to take to the highway!

Proof That a Diamond Is Not the Most Valuable Precious Stone:

The ruby is more valuable than the diamond. 1. "Americana" Vol. 22.

SANDERSON MOTOR CO.
SALES SERVICE
207 SO. RIVERSIDE—PHONE 1385

Her Royal Highness, Queen Dorothy!



Reigning over the 1937 Portland Rose Festival, the Northwest's nationally famous event, is regal Queen Dorothy Hardin. Shown in the "Queen's Rose Garden" at Lambert Gardens, Portland, Queen Dorothy is proudly standing by her official car, a Ford V-8 phaeton, painted pure white. White Fords have also been provided for the eight royal princesses by the Ford dealers of Oregon and Southern Washington.

CHECKING CAR IS GOOD INSURANCE

"It is a recognized fact that the American people are thoroughly insurance minded. By and large, they take every precaution they can to see that they are adequately protected by policies of all types," says Mr. W. L. Lewis, manager of the Lewis Super Service Station, Eighth and Front, dealers of the B. F. Goodrich company, manufacturers of automobile tires and other car products.

"Many motorists are deciding, too," says Mr. Lewis, "that a thorough checking of their automobiles, especially before the period of heaviest summer driving, is one of the most inexpensive forms of insurance for safety they can purchase. The small outlay needed to determine that the car is in safe condition to operate is offset many times by the peace of mind, security and protection from accidents that it brings.

"This campaign for inspection and checking of car equipment is one contribution that tire and other automotive dealers throughout the country are making in the battle against unnecessary deaths and injuries through car operation.

"The higher speeds of today's automobiles, and the modern roads upon which they run make it imperative for this kind of a check several times a year, particularly in the spring or early summer. It takes but little of the motorist's time, its cost is small. Benefits from it may include saving the driver and his family from death or being crippled.

"We lay particular stress, of course, on inspection of tires, brakes and headlights, although checking every other piece of equipment on the automobile. Tires just must be in good condition or disaster lurks just around the corner, and the same is true of brakes and lights."

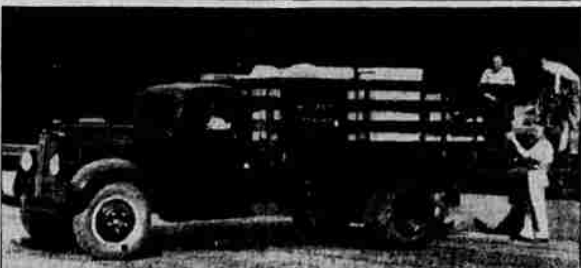
Dooms 500 Trams.
LONDON — (UP) — Another 500 trams are to be scrapped by the London passenger transport board this year and replaced by trolley-buses.

Boy Steals Harness
OGDEN, Utah, June 12.—(AP)—A 15-year-old boy was arrested here today at the request of the district attorney of Ontario, Ore., police accusing him of stealing an automobile and a set of harness in Oregon.

WINDOW GLASS—We sell window glass and will replace your broken windows reasonably. Frowbridge Cabinet Works.

Closing time for 100 Late to Classy Ads is 1:30 p. m.

New Dodge Stake Truck



This is the two-ton Dodge stake truck on a 159 inch wheel-base which has been constructed for heavy-duty hauling at a low cost of operation. This unit is used widely by manufacturers, farmers, wholesalers, trucking concerns and in many other fields where large load capacity is necessary.

Daily Tests Made By Union Oil For Engine Power Data

As very subtle differences in motor fuel structure result in enormous differences in the power obtained in a high compression engine, it is not surprising that so much attention is directed toward maintaining scientific precision in gasoline production. Union Oil Company, for instance, maintains a huge laboratory building at its Wilmington refinery where scores of technicians devote all their time every day to product testing and research work.

In the production of its 76 gasoline, Union's refinery in continuous testing at various stages of operation makes 144 tests daily, which is at the rate of one complete test every ten minutes. In addition, continuous testing at other points results in 310 additional checks on the gasoline's quality at various stages along the production line. Twelve different types of tests are made directly on

the gasoline in the refining process. They are to check A. P. T. gravity, distillation, color, freedom from corrosion, freedom from acidity, freedom from sourness, knock rating, vapor pressure and freedom from injurious amounts of sulphur.

CHERRY PICKING STARTS UPSTATE

THE DALLES, Ore., June 12.—(AP)—Picking of the smallest cherry crop Wasco county has had for a number of years is slated to get under way next week in areas close to The Dalles. Fruit has been ripening rapidly during the warm weather of the last several days.

The Dalles co-operative growers started receiving cherries for barreling early in the week. Columbia fruit growers, a second co-operative association formed here this spring,

New Manager



O. H. Ford, who last week assumed his new duties as manager of the central district, including Medford, of the Oregon division, General Petroleum corporation.

has sold a large part of its tonnage to the Ray Mailing cannery at Hillsboro. The price was not announced, but is reported to be more than 8 cents a pound.

Growers here estimate that the crop will range from one-third to one-half of normal in most orchards, due to rain during pollination time.

Firm Files Appeal
SALEM, Ore., June 12.—(AP)—Leo A. McGrail & Co. of Portland, whose permit to continue business in Oregon was revoked by Corporation Commissioner J. H. Haultlett, filed notice of appeal in the circuit court here.

BIG SPRING CROP WHEAT, PROSPECT

CHICAGO, June 12.—(AP)—Possibilities of a bumper United States spring wheat crop, together with prospects of increased arrivals of winter wheat, face the grain trade. Lower prices for wheat have largely resulted from these two factors, despite apprehension that black rust this season may spread sooner than usual to spring wheat states, and do greater damage.

One reason assigned to that since June 1, when data was gathered for the latest government estimate of domestic crop production, the weather has been exceptional and spring wheat states should show decided improvement over a suggested crop of between 175,000,000 and 200,000,000 bushels.

New & Factory Rebuilt

STARTER SWITCHES..... **40c**

Fuel Pumps..... **\$2.25**

Bendix Drives..... **98c**

Spec. Model A **\$2.75**

Generator, exch.

New Guarant- **\$2.95**

teed Batteries

Stock Trailers For Rent or Sale

PRICE

AUTO WRECKERS
Combined with
AUTO ELECTRIC
132-134 N. Riverside

RUDY SINGLER, VETERAN SERVICE STATION OPERATOR SWITCHES TO DODGE!

YOU, TOO CAN SAVE

DODGE'S startling "wind-stream" styling and amazing, new motor offers EXCEPTIONAL economy in gasoline and oil consumption... Owners report from 18 to 24 miles on a gallon of gasoline! Savings up to 20% on oil! You, too, can make these savings if you switch to Dodge.



RUDY SINGLER AND HIS NEW DODGE

READ MR. SINGLER'S LETTER

Medford, Oregon
June 12th, 1937

Mr. L. C. Taylor,
Pierce-Allen Motor Co.,
Medford, Oregon

Dear Mr. Taylor:

I cannot resist the opportunity of expressing to you my appreciation for the comfort and economy of my new 1937 Dodge, recently purchased from your firm.

Many years of experience in servicing all makes of automobiles have convinced me of the superior construction and mechanical excellence of the Dodge. To say that my new car exceeds my expectations is putting it mildly.

Using Gilmore gasoline and Lions Head motor oil, I have carefully checked mileage and oil consumption and I am convinced of the truth of your slogan "Switch to Dodge and Save." The many safety features and driving ease and comfort appeal to every member of my family.

You may count me as one of your most enthusiastic Dodge boosters!

Very truly yours,
(Signed) R. F. SINGLER

Here is a photograph of Mr. Singler and his smart, new DODGE taken in front of his GILMORE station at Ninth Street and South Central Avenue.

Come In... See and Drive the Amazing New 1937 Dodge... Bigger, More Smartly Styled... New Riding and Driving Features, New Safety Provisions... The Car that Motorists Everywhere Say "Millions Will Want to Switch to for 1937!"

PIERCE-ALLEN MOTOR CO.

112 South Riverside. L. C. TAYLOR, Managing Owner Phone 150

GOODRICH CRASHES THE LOW-PRICED TIRE FIELD!

BUILDS THE CERTIFIED COMMANDER—A TIRE THAT'S EVERY INCH GOODRICH QUALITY—AND WE OFFER IT AT A PRICE THAT WILL MAKE A REAL SAVING IN YOUR TIRE COSTS!

AND LISTEN! EVERY COMMANDER TIRE IN OUR STOCK IS FACTORY FRESH!

Goodrich Factory Fresh Commanders
"EVERY INCH A GOODRICH TIRE"

Factory Fresh GOODRICH COMMANDER AS LOW AS \$5.25 AS 30 x 3 1/2

Another triumph for Goodrich engineering skill. Another Goodrich tire that gives motorists full value and full mileage for their money. Our supply of Factory-Fresh COMMANDERS has just arrived. And what tires they are! Everyone of them full dimension, with an extra-wide, extra deep, heavy tread. Made of wear-resisting rubber, this low-priced Certified Commander will give you extra mileage for your money.

And we'll leave it to you. When you can get a tire that's built and backed by Goodrich at a price that's so downright low— isn't that a real bargain! Spend your tire dollars wisely. Let us equip your car with Goodrich Factory-Fresh COMMANDERS and save.

*Prices subject to change without notice.

NO DOWN PAYMENT!

YOUR CREDIT IS ALWAYS GOOD HERE

Regardless of Experiences Elsewhere

Lewis Super Service Station

We Never Close 8th and Front Phone 1300