

# AUTOMOTIVE NEWS

## ASSOCIATED LIST AID TO TOURISTS

"Gee whiz—I forgot . . ." That tried and true remark is made by at least one member of every family at least once every year, as the annual vacation trek gets under way.

As a cure for this customary ailment among all vacation travelers, Associated

**Sandy Says It's a Fact!**

**PANAMA HATS ARE NOT MADE IN PANAMA!**

GENUINE PANAMA HATS—MADE ON THE PREMISES

### And We Can Show It!

And Genuine Used Car Values are available at Sandy's. You can get the Best Value in the city there, at the price you wish to pay.

- 1936 Studebaker Sedan.
  - 1934 Studebaker Coupe.
  - 1930 Studebaker Sedan.
  - 1934 Dodge Coupe.
  - 1929 Ford Coupe.
  - 1929 Chevrolet Sedan.
- And several low priced cars that are transportation for \$10 to \$35.

### PROOF THAT THE SKY IS NOT BLUE!

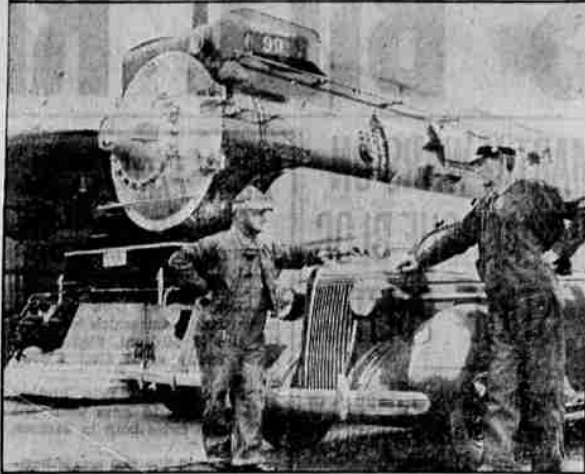
The blueness of the sky is due to the minute particles of dust suspended in the atmosphere. It is not space itself which is blue. 1.—"Popular Pallaces"—A. B. E. Ackermann, 2.—"Encyclopedia Britannica"—11th Edition, 3.—Prof. John Tyndall, F.R.S.

**SANDERSON MOTOR CO.**

SALES SERVICE

207 SO RIVERSIDE—PHONE 1365

## They Both Own Nashes



Charles Glass, engineer, on the right, and A. H. Johnson, fireman, of the Southern Pacific crack Daylight Limited, both climb into Nash cars when they finish their run at the Bay City. Here they are with their crack highway transportation.

dated division, Tide Water Associated Oil company this year offers a splendid remedy—a "Don't Forget List and Vacation Guide" which contains most every possible suggestion to prevent the embarrassing situation when forgetfulness causes dark clouds to cover the happy vacation sky.

This easily checked list, given away by all smiling Associated dealers on the Pacific coast, consists of 12 pages, four by nine inches, convenient to carry and invaluable to

have on the motor vacation jaunt. Heading the long list of helpful suggestions is the item "Before You Leave Home," which includes such pertinent points as turning off the gas and lights, locking the doors and windows, turning off the electric iron and even putting out the cat. Each item can be checked off in the allotted space, resulting in a carefree mind for each, as the vacation journey goes under way.

Other suggestions include "Stopping Overnight," "Things for Your Car," "If You Are Camping Out," "Facts for Fishermen," "National Forest Regulations," "Caring for your Car While Traveling," "How to Save Gas," "Speed Laws in the West," and "Trailer Tips."

One most important item is the "expense form" which is prominently included. This "at a glance" record proves invaluable to all motorists and vacationists. Associated's "Don't Forget List and Vacation Guide" is available at all smiling Associated dealers in the west—ask for your copy today.

**RELINE YOUR BRAKES WITH Firestone BRAKE LINING**

AS LOW AS **66¢ PER WEEK**

**BUDGET PLAN NO MONEY DOWN Firestone**

AUTO SUPPLY & SERVICE STORES

9th and Riverside, Phone 525

### Ask Pierce Support Grants For Oregon

WASHINGTON, May 22.—(AP)—Congressman Walter M. Pierce of LaGrande, Ore., received a telegram from Governor Charles H. Martin today asking him to support legislation authorizing grants for projects submitted under the original public works administration regulations.

On the basis of grants for construction and material, Oregon has made 86 applications totaling about \$6,500,000, the governor said. Additional needs reaching \$16,500,000 have not been filed, he added.

See LANGE'S for late model high-grade used cars. 38 N. Riverside.

## PIERCE-ALLEN ADDS MOTOR ANALYZER TO SHOP'S FACILITIES

The pleasure of spring driving is greatly enhanced by the increased performance which comes from the careful check-up and spring conditioning service according to L. C. Taylor, local Dodge-Plymouth dealer. Mr. Taylor has just installed a Weidenhoff Analyzer, approved by the Dodge factory to give the motorist an accurate check and condition of the motor.

"E. F. White, vice manager of the company, pointed out several of the more important operations in the spring check-up which in addition to regular service helped the car to meet the increased demands made on it by long summer drives.

The engine, transmission and rear axle should be drained of the light winter lubricants and the heavier warm weather grade put in. The radiator should be drained and flushed and also radiator connections; the fan belt should be checked to insure proper cooling and the engine should be tuned by a competent mechanic. All points of the ignition system should be carefully checked. This provides for maximum performance and increased safety resulting from greater handling ease and removal of possible ignition difficulties.

In addition to these services, tires should be checked, brakes tested and adjusted, battery cleaned and recharged and the car washed and polished to remove all trace of de-structive salts and chlorides used to dissolve ice on winter roads. It is also a good plan to check up on emergency repair items such as jacks, spare light bulbs, fuses and tools because of the amount of country driving during the summer. Careful application of such a spring service check-up by a trained service department will make car ownership a more pleasant experience this summer, Mr. White concluded.

### Izaak Waltons To Invade Deschutes

PORTLAND, May 22.—(P)—More than 100 members of the Portland Izaak Walton league travel into the central Oregon "fishing belt" this week-end to test the reputation of the Deschutes country as one of the most famous sport centers of the west.

The "mass movement" of anglers represents the largest outing of the season. Special cars will take the Portlanders to Deschutes river Saturday morning. They will return Sunday.

## PACKARD BREAKS SALES RECORDS

Packard Motor Car company is continuing in the breaking of all records for its entire history in both production and delivery of cars to customers, it is announced by Perry A. Adams, local Packard dealer. Deliveries during April were 14,965. This compares with 12,952 in March 1937 and 7,942 in April last year. Shipments in April were 15,164, compared with 14,550 in March and 7,826 in April, 1936, it is announced by the company. It is pointed out that deliveries in both March and April so nearly equaled shipments as to permit of no normal build up of cars in the field for these two months.

Reports for distributors and dealers for the first 10 days of May, it was further announced, indicate that deliveries during May would continue, as in March and April, to be approximately 100 percent greater than the corresponding months in 1936. Deliveries of the larger more costly Packards continued during April in the increase they have been registering over those in 1936.

Be Correctly Corseted in AN ARTIST MODEL by Ethelwyn B. Hoffmann.

- New and Factory Rebuilt**
- STARTER SWITCHES **40c**
  - Fuel Pumps **\$2.25**
  - Bendix Drives **98c**
  - Special Model A Generator **\$2.75**
  - Exch. **\$2.75**

**PRINCE AUTO WRECKERS**  
Combined with **AUTO ELECTRIC**  
132-134 N. Riverside

## NEW LUMBER ORDERS SHOW DIP FOR WEEK

PORTLAND, May 22.—(P)—Reports from 111 mills showed last week's new business of \$8,995,000 board feet of lumber was 8 per cent below the previous week's mark, the Western Pine association said today.

Production totaled 85,687,000 feet, more than five million feet more than a week ago, and shipments reached 72,821,000, a slight gain.

Orders, production and shipments exceeded totals for the corresponding week of 1936.

To date orders were reported 20 per cent above last year.

### Two Industry Deaths

SALEM, May 22.—(AP)—Industrial accidents in Oregon cost the lives of two workmen the past week, the state commission announced today. They are Alexander M. Morgan, Klamath Falls farmer, injured May 12, and R. H. Thompson, timer worker of Selah, Washington, injured May 11 at Vernonia.

**Oldsmobile**

**ONLY \$998**

**FOR THE SEDAN FULLY EQUIPPED DELIVERED HERE**

**The New Chrysler Royal**

**TRUNK SEDAN \$1085**  
Delivered in Medford ONLY

**BUSINESS COUPE \$985**  
Delivered in Medford Fully Equipped

**PRINCE AUTO WRECKERS**  
Combined with **AUTO ELECTRIC**  
132-134 N. Riverside

**LANGE MOTOR CAR CO.**  
CHRYSLER AND PLYMOUTH DEALERS  
38 N. RIVERSIDE

*Come In And See Them*

**"TUNE-UP" MEANS NEW LIFE FOR YOUR CAR!**

**TO BETTER SERVE YOU WE HAVE ADDED TO OUR SHOP FACILITIES A Completely New MOTOR ANALYZER**

**That Puts SPRING in Your Car**

- More Complete Than Any Single Unit Panel
- Greater ACCURACY Assured!

Developed by Engineers with Years of Motor Analyzing Experience!

Through NEW ELECTRON EMISSION TUBES—Easy to read gauges that assure greater accuracy!

**Have YOUR CAR Checked NOW!**

It's just another IMPROVED service featured in our well equipped shop . . . Remember! Only EXPERIENCED FACTORY TRAINED mechanics work on YOUR car!

HERE'S a chance to have your car thoroughly checked through this new, improved MOTOR ANALYZER so that you may be assured of MAXIMUM EFFICIENCY and PERFORMANCE for spring and summer driving . . . Proper adjustments provide SUBSTANTIAL SAVINGS in reduced operating costs PLUS greater driving pleasure . . . Come in! See this sensational, new MOTOR ANALYZER TODAY! Have your car QUICKLY, THOROUGHLY, ACCURATELY Checked!

**PIERCE-ALLEN MOTOR CO.**  
L. C. TAYLOR, Managing Owner  
112 South Riverside, Phone 150

**"FEELS GRAND TO BE OUT OF THE 'ALL THREE' CLASS!"**

**"MY 117-INCH WHEELBASE NASH COST ME ONLY A FEW DOLLARS MORE THAN THOSE SMALLER CARS!"**

**NASH**

Here's why Harry V. Kegel bought a Nash LaFayette "400"

Talk to the people who are changing to Nash this year. Listen to them enthuse. Then go see this exciting car that's caused so much attention.

Here are just a few facts. It's a luxurious 117-inch wheelbase car. It has a 90 horsepower six cylinder engine. You get larger hydraulic brakes. Stronger all steel bodies. Extra-wide seats, more headroom and legroom.

There are dozens of other things you ought to know about the Nash LaFayette "400"—and remember it delivers for just a few dollars more than any of the "All Three" small cars.

Let us show you the Nash Ambassador Six. It's even bigger than cars costing \$200 more. Take a look at the 125-inch wheelbase Nash Ambassador Eight. We think it's one of the real "luxury cars" in America. See it. Drive it. Price it. Let us show you the X-Ray System—gives you all the facts about all the cars.

FOR AS LITTLE AS \$1 OR \$1 A MONTH EXTRA you can get out of the "All Three" class. A small car. In many places, the SLIGHT difference in price amounts to just \$1 or \$2 a month extra on your time payments.

Ask about the convenient terms and low rates available through the Nash C. I. F. Budget Plan. Automatic Credit Clear available on all Nash models of slight extra cost.

Actual photograph of Nash LaFayette "400" 4-Door Sedan with trunk

PRICES SUBJECT TO CHANGE WITHOUT NOTICE

**WALTER W. ABBEY, Inc.** PHONE 303

123 S. RIVERSIDE