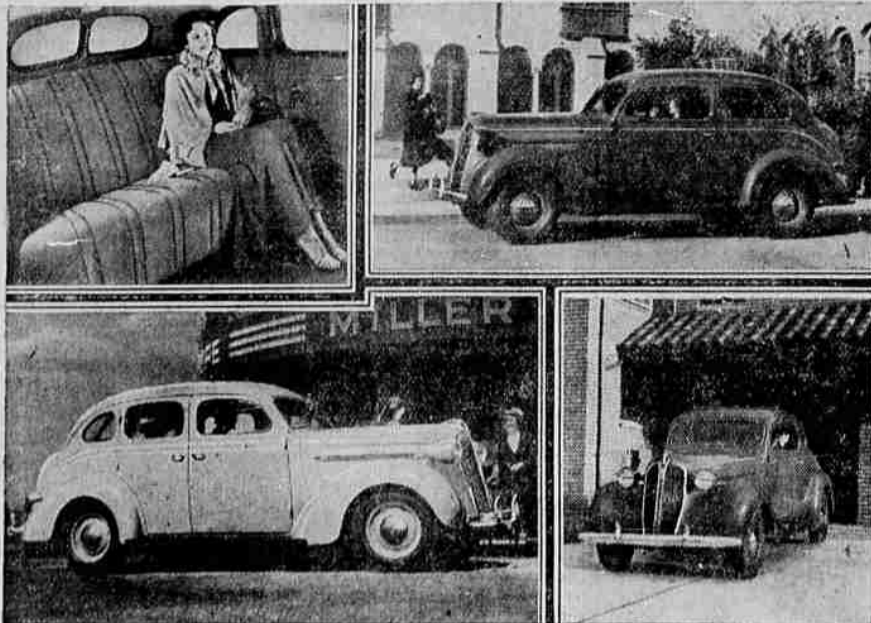


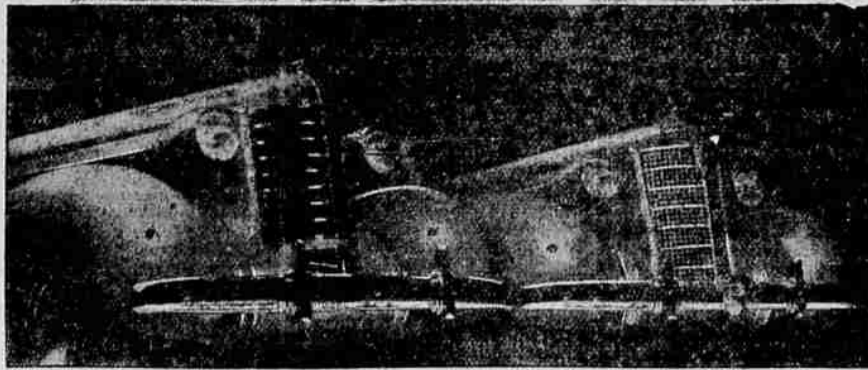
AUTOMOTIVE NEWS

Long, Low Contours Mark New Plymouth for 1937



REVOLUTIONARY "safety styling," and massive bodies pillowed on rubber-poise mountings for a new kind of "hushed" ride make their bow with the new Plymouth for 1937. Hypoid rear axles, complete soundproofing and big airplane-type shock absorbers are other Plymouth innovations this year. Interiors are roomier, with the added luxury that only extra space can give. Eight "deluxe" and three "business" body types are included in the 1937 Plymouth line. The models shown above are the new Four-Door Touring Sedan (lower left), the Two-Door Sedan (upper right) and Rumble Seat Coupe.

"PRE-VIEW" OF 1937 OLDSMOBILE SIX AND EIGHT



Above is the first photograph of the new 1937 Oldsmobile Six (left) and the new Oldsmobile Eight. J. J. Osenbrugge has the six on display and the eight is expected here soon. The picture reveals the highly individual style treatments which distinguish the two new lines of cars.

AAA LEADER SEES BIG TRAVEL BOOM

The west is at the very portals of the greatest tourist expansion in history and as the tide of recreationists sweeps toward the Pacific all industries will prosper.

This was the message brought to Oregon recently by Russell E. Singer, general manager of the American Automobile association, who addressed western A. A. A. motor club executives in Portland, where they were guests of the Oregon State Motor association.

"All signs point to unprecedented growth in travel in the next few years, and the west will be at the head of the list," Singer said. He produced letters from numerous eastern motor clubs which indicated that travel business in 1936 experienced an increase of around 25 percent in western routings.

Citing the various reasons for the increase, Singer said the volume of western publicity, improved transcontinental highways, more reliable automobiles and better economic conditions were largely responsible for the bright prospects in the travel field. He paid a high tribute to the Oregon State Motor association, the advertising and travel department of the Oregon state highway commission and the Evergreen Playground association for the work done in the past year to bring tourists westward.

Singer's talk was a highlight of the two-day conclave, but at the general business sessions such problems as highway safety, travel development and legislation were sharing the spotlight.

Although the AAA executive did not definitely go on record against state border patrol, the practice of California border officials of rummaging tourist's baggage in search of the so-called California fruit fly was condemned as a serious impediment to travel development in the west.

At the conclusion of the conference Clarence Werthan, manager of the Rocky Mountain Motorists, Denver, Colo., was elected president of the western conference to succeed David E. Watkins, manager of the California State Automobile association.

Closing time for Too Late to Classify Ads is 1:30 p. m.

Higher Efficiency In Chrysler Royal Gold Seal Engine

Throughout the history of the automobile, engineers have been striving to increase horsepower while reducing weight and fuel consumption. Notable progress in this direction has been made in the entirely new Gold Seal engine used in the 1937 Chrysler Royal, this company's entry in the low-priced field. Important changes in design that permit the use of a 6.5 compression ratio, the highest ever achieved in an engine of this bore, result in 93 horsepower with a piston displacement of but 228.1 cubic inches. With so much power from so small a displacement, the saving in fuel is bound to be very material, according to H. P. Lange, local Chrysler and Plymouth dealer.

This sensational new engine has a bore of 3 3/8 inches and a stroke of 4 1/4 inches. It is of the "L" head type always used in Chrysler cars. A full length water jacket and water distributing tube are used to aid in cooling. These features were introduced in the 1936 Chrysler Six and

proved highly successful in improving performance.

The most important change in the design of this engine as against its predecessor have to do with the valves. Valve diameter and valve area have been increased. The increased size of the valves permits the gasoline vapor to enter the cylinders more rapidly and the exhaust gases to leave the cylinders more rapidly. Valve ports have been improved in design to facilitate the rapid passage of gas from the manifold to the combustion chamber.

Mr. Lange says, "Engineering tests have proved that the Chrysler Royal with the Gold Seal engine is one of the most economical cars ever produced, regardless of the size of engine."

Dividends Increase

NEW YORK, Nov. 24.—(AP)—Favorable dividend changes in the past 12 months compared with 62 in the preceding week, Standard Statistics Co., reported today. There was one unfavorable change against none in the previous period.

A mole can turn 120 degrees in solid earth with four strokes of its paw.

Indian Sentenced
BEND, Nov. 14.—(AP)—A seven-year term in the state penitentiary was imposed upon Ambrose George, Warm Springs Indian, in circuit court. He pleaded guilty to a manslaughter charge developing out of the death of George Reed, another Indian.

Roseburg Hopeful
ROSEBURG, Nov. 14.—(AP)—Although FWA assistance has been withheld Mayor C. W. Clark said Roseburg had not abandoned its efforts to construct a trunk line sewer and a disposal plant.

EAGLES INITIATE 19 NEW MEMBERS

Medford serie of the Fraternal Order of Eagles initiated 19 new members at its regular weekly meeting in West Main street lodge hall Friday night. The initiation ceremony was conducted by George Tucker, aerie president.

The lodge has been conducting a membership drive for several weeks and, although the state organizer who has been in charge has returned to his Portland headquarters, the aerie itself will continue the campaign for two weeks. Mr. Tucker announced. The extended campaign will be directed by Jack Porter, vice-president.

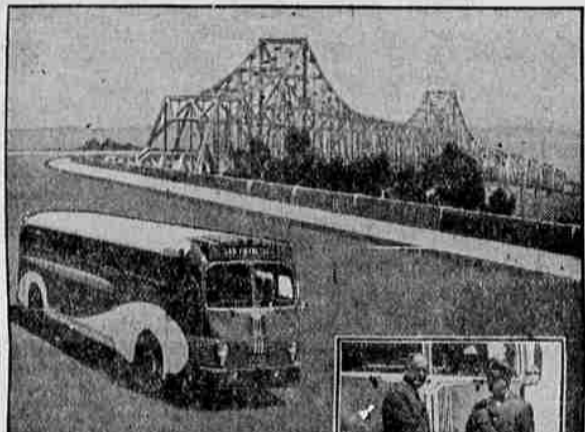
Members of the aerie and its auxiliary now have tickets for sale for the annual Eagles' charity ball which is to be held at Oriental Gardens December 16. As customary, proceeds of the ball will be used in providing baskets of food for needy families at Christmas. Archie Legg's Brunswick recording orchestra, Yreka Calif., will provide the dance music. Tickets for the ball may now be procured from members.

It was decided at the meeting to enter into an inter-lodge wager that Medford aerie would have more members than Ashland aerie at the latter's meeting in the Lithia City next Thursday night. Drill teams of both the Medford aerie and auxiliary will attend the Ashland meeting in a uniformed body and stage a parade before the session.

Because of the friendly wager, Mr. Tucker made a special plea for as many Medford Eagles as possible to attend the Ashland meeting. Those who have extra room in their cars for conveying other members to Ashland were requested to report at the lodge hall here at 6:30 Thursday evening.

Now Filipino
MANILA, P. I., Nov. 14.—(AP)—Francis Burton Harrison, former American governor general of the Philippines, became a naturalized Filipino today.

Eastern Section of San Francisco-Oakland Bay Bridge Showing New Greyhound Super-Coach Approaching Yerba Buena Island. Cantilever Span in Background



Insert. President W. E. Travis of Pacific Greyhound Lines left, congratulating E. Hansen the driver of the Super-Coach on his being the first to operate a Greyhound on the gigantic new span.

G-MEN EYE WHITE SLAVERY IN LAND

WASHINGTON, Nov. 14.—(AP)—J. Edgar Hoover disclosed today that federal agents tracking down white slave rings have uncovered evidence necessitating expansion of investigating activity to the Pacific coast.

Recent arrests for white slavery have been in the east, south and middle west, but the chief of the bureau of investigation said information now in the hands of his men required activity from Maine to California.

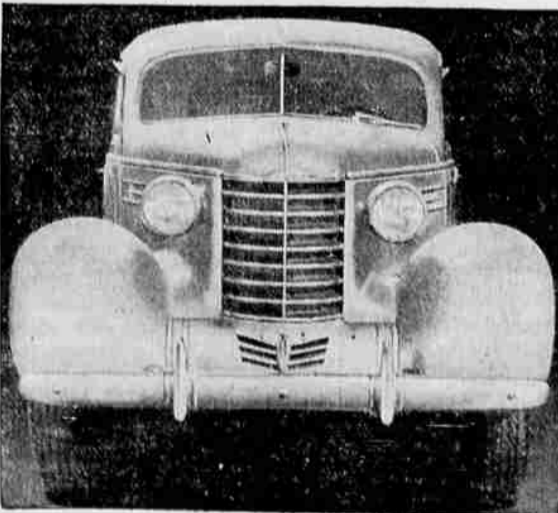
Arrests of nearly 80 persons in the past 10 weeks, including three rings accused of supplying prostitutes to

New England and southern beach resorts, has made white slavers more cautious, Hoover reported.

The federal law on white slavery prohibits the transportation of women across state lines for immoral purposes.

Use Mail Tribune want ads

NOW ON DISPLAY!



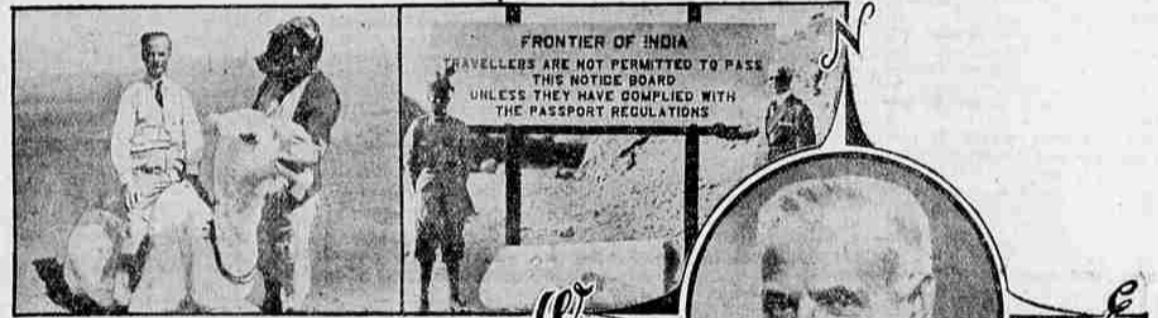
Bigger, Finer and Safer Than Ever
The New 1937

Oldsmobile 6

- Offering: Fresh, New Style Leader Styling • Longer Wheelbase • Larger Size • Roomier Bodies • Lower Floors • Wider Chassis • Heavier Frame • Bigger Engine • Higher Power • Extra Safety • Greater Economy • And Oldsmobile's Traditionally Fine Quality.

J. J. OSENBRUGGE

32 South Riverside



JIM MILLS WAS THERE!

PUT your finger on any spot on the globe, and the chances are pretty good that The A.P.'s Jim Mills has been there, covering a story for The Associated Press.

Jim Mills is a veteran of The Associated Press Foreign Service—Moscow to Addis Ababa, London to Bombay, Berlin to Shanghai—the world has been his beat. The golden names, the brass hats, the humble people and the proud—Jim Mills has known them all, in peace and in terror. Crowned heads and premiers have confided state secrets to him, and that humblest of men, Mahatma Gandhi, trusts him as a friend.

Wherever big news breaks, there you may find Jim Mills, gentle in manner, quiet spoken, but patiently and endlessly inquisitive.

Jim Mills never wrote a book, he never made a lecture tour, never was a radio star, never did anything to make a big and glamorous name for Jim Mills. He just asks questions because he wants to know and write the answers.

That is why James A. Mills, of The Associated Press Foreign Service, is one of the world's greatest reporters.

THE ASSOCIATED PRESS
REPORTS THE NEWS OF THE WORLD DAILY FOR

MEDFORD MAIL TRIBUNE

TODAY
You Can Look At and Compare All Three!

Be Sure and See the New 1937

PLYMOUTH
and
CHRYSLER

The Two Cars You MUST See Before You Buy Any Car at Any Price!

Lange Motor Car Co.
Plymouth and Chrysler
38 No. Riverside