

# C of C Joins High School In Boosting Saturday's Football Game

## CLASH WITH K. F. TO DRAW RECORD TURNOUT OF FANS

Ashland, Grants Pass Reservations Received—Many Carloads Expected From Klamath; Tickets On Sale

The Medford high school student body is not the only organization in the city interested in having an attendance-shattering crowd at the annual Medford-Klamath football game here Saturday. The day has been set aside as Jackson County Chamber of Commerce Day by the chamber board, and the members have launched a drive tending to aid materially in boosting attendance to a new high.

The chamber fathers have had distinctive red and black tags printed, to be given with every ticket and worn between now and the game. Tickets have been put on sale at the chamber building, and already the center block of seats in the grandstands have been sold solidly.

It was estimated early in the year that the Medford-Klamath game would draw more spectators than any other athletic event in the history of the city. That estimate will apparently not be far wrong, with reservations being received from Ashland, Grants Pass, as well as from Klamath Falls.

As in past years, the Pelican City herald will send many carloads of roosters to cheer her team on to what would be the outstanding event of the year if they won.

Last year only a handful of Medford fans braved a windy blast and unrelenting weather to follow the Tornado east, but on the previous year 35 passenger cars brought a howling mob here from Klamath Falls. This year almost twice that many are expected.

A. H. Danwell of the Jackson County chamber, announced today that the members of the organization almost to a man will be on hand for the game, rooting with the vigor of undergraduates. "My prediction," he said today, "is that there will be at least a thousand more fans than at any previous Medford game."

## PORTLAND AGOG FOR GRID GAME

PORTLAND, Oct. 29.—(AP)—Advance agents from the universities of Oregon and Washington find no difficulty stirring up enthusiasm for Saturday's annual northwest gridiron classic at Multnomah stadium.

Officials didn't hesitate for a moment to predict a crowd of 35,000 spectators such as saw the 1935 battle when Dr. C. W. Spears, former Oregon coach, made his debut before Portland football fans.

Although the seat sale was moving rapidly, Jimmy Richardson, stadium manager, said "no one who wants a seat Saturday will be turned away."

The conference leading Huskies were favored 2 to 1. The famous Oregon "jinx," however, was keeping the spirits of the Webfoot ranks high.

From Seattle came word that 8000 fans would travel to Portland.

FUEL OIL, any amount. Call 1184 Petroleum Heat & Burner Co.

## Nationally Famous for COMFORT and GOOD FOOD

You'll enjoy your Portland visit to the extreme, here at the center of the city's life. . . Pleasant, outside rooms. Beautiful Dining Room and smart Coffee Shop. Delicious food at popular prices.

Only three to four blocks from leading banks and stores. Garage opposite.

## SUPPER CLUB

Dining and dancing nightly (9 to 1) except Sunday and Monday. . . Famous orchestras.

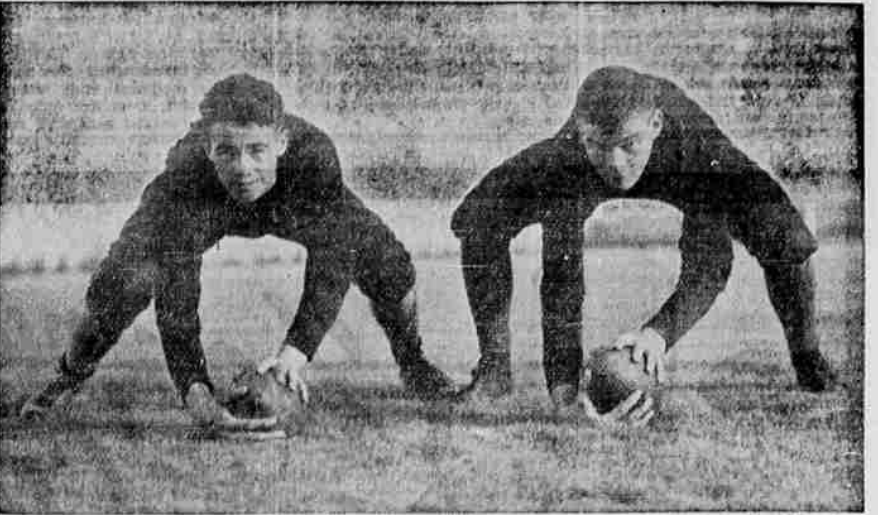
## Hotel MULTNOMAH

600 ROOMS Sensible Rates PORTLAND, OREGON

## GREEN PINE \$2

Slabs—Select Quality—Per Load in Two Load Lots Medford Fuel Co. Tel. 631 1122 N. Central

## Injury Puts Star Center On Sidelines



Above, right, is Ardo Stocks, regular center on the Medford Black Tornado football squad, who will be out of action for at least three weeks because of a cracked collar-bone. The injury was received either in Saturday's game with Grants Pass or in practice Monday night, but was not discovered until yesterday, when X-ray pictures showed a crack near where the bone is attached to the breastbone. With him is Fred Stevens, one of the three alternate centers who may be used. Stevens is a sophomore this year, and has seen action in nearly every game. Other centers are Baker, regular guard, and Thanos.

## Automobile Knees Is Modern Curse Says Grid Coach

RICHMOND, Va., Oct. 29.—(AP)—Glenn Thistlethwaite, University of Richmond coach who has worn his hair thin in 28 seasons of master minding, shook a warning finger at the gridiron world today and said:

"Automobile knees are the curse of this generation. You find babies rolled around in perambulators for the first two years of their lives, carried to school in automobiles until they're big enough to stretch their toes to the accelerator and then—with the exception of occasional interruptions for food and sleep—they spend the rest of their lives with their arms draped lovingly around steering wheels."

And that, says Thistlethwaite, is the reason football squads are beset with knee injuries which oftentimes ruin the chances of a potential star.

As in past years, the Pelican City herald will send many carloads of roosters to cheer her team on to what would be the outstanding event of the year if they won.

Last year only a handful of Medford fans braved a windy blast and unrelenting weather to follow the Tornado east, but on the previous year 35 passenger cars brought a howling mob here from Klamath Falls. This year almost twice that many are expected.

A. H. Danwell of the Jackson County chamber, announced today that the members of the organization almost to a man will be on hand for the game, rooting with the vigor of undergraduates. "My prediction," he said today, "is that there will be at least a thousand more fans than at any previous Medford game."

## BOWLING

The Killowatts last night dimmed the light of the Scrubs in the Elks bowling tourney, 3-1, with Capt. Burroughs of the winning squad turning in high total with 503. Friday night the Knack Knockers attempt to knock over the Southpaws.

Individual showings last night:

Killowatts.				
Burroughs	166	215	132	503
Ormscheid	167	145	135	447
V. Watson	141	133	133	407
Dumay Score	142	133	103	378
Ferguson	162	140	160	462
Handicap	148	145	145	438
Totals	913	940	830	2692

Scrubs.				
Ort	166	188	142	496
Hankin	156	160	103	419
V. Strand	142	148	124	414
M. Hall	145	133	121	399
H. Gill	141	143	157	441
Handicap	162	162	162	486
Totals	914	934	800	2657

## RISKO AND COOL CROSS WISE ONES

NEW YORK, Oct. 29.—(AP)—From the way things have been going since Max Schmeling upset Joe Louis, this seems to be the year for experience to spring the fight game's surprise package by showing up young favorites.

Nearly as startling as the German's knockout of Joe Louis last summer, were a pair of returns by Babe (Babe) Risko, the former middleweight champion, and Eddie Cool, veteran Philadelphia lightweight, last night.

Both of them left the experts with very red faces again.

Cool outpointed the new lightweight king Lou Ambers, in Philadelphia, in a 10-round non-title affair—Ambers' first start since winning the title from Tony Casoneri.

Risko, on the short end of 2-to-1 odds before the fight, punched out a clean-out 10-round win over Harry Balsamo, the middleweight knockout sensation, in New York.

## WRESTLING

(By the Associated Press) PROVIDENCE, R. I.—Evon Robert, 222, Montreal, defeated Fred Bruno.

## INJURY TO STOCKS FAILS TO DAMPEN BOWERMAN HOPE

The collar-bone injury that sent Ardo Stocks, regular Medford high school center, to the sidelines yesterday for three weeks, struck a heavy blow at Black Tornado hopes for a decisive win over Klamath Falls Saturday, but afforded the chance to start which Lewis Thanos has been looking for for two years.

Thanos, a rangy and powerful alternate snapper-back, has been the lost man of the Medford line. Tried at end, tackle, guard and center, he has shown ability at all four posts but has not had the experience to crack the first team lineup. Saturday, according to Coach Bill Bowerman, he will start the game and if he proves himself capable will remain in.

Fortunately for the Tigers, there are three good centers to take Stocks' place. Either Thanos or Stevens can fill in, or Baker, vest-pocket guard from the first string, can move to the center post while Morris takes over guard duties. "Center is the strongest position, and while we will miss Stocks, we'll get by all right," Bowerman said in one of the first optimistic reports he has made all year.

Another bright ray to offset the loss of Stocks is the fact that the Tiger backfield will at its strongest for the Pelican fray. Ray Lewis, out since the opening game of the season with a twisted ankle, will be in the starting lineup, at right half, a position unfamiliar to him but in which he has been traveling beautifully in practice. Olsen, understudy, who has done a great job in filling Lewis' shoes, will remain at the left half post, while Ettinger will move to his old assignment at blocking quarterback. Sakrada will start at fullback.

The right half position calls for a strong blocker. Lewis is considered a better blocker than Olsen. The post also gives the right half plenty of opportunity to carry the mail, as witness the three touchdowns scored from that spot by Ettinger against Grants Pass last week.

Since there will be no classes at the high school tomorrow to make way for Teachers' Institute at Ashland, the student body held a pep assembly in the auditorium at 11:45 this morning. It was announced from the school that the smartly attired girls' drum corps may parade the downtown section tomorrow, although there will be no student parade.

Since there will be no classes at the high school tomorrow to make way for Teachers' Institute at Ashland, the student body held a pep assembly in the auditorium at 11:45 this morning. It was announced from the school that the smartly attired girls' drum corps may parade the downtown section tomorrow, although there will be no student parade.

## Markets

PORTLAND, Ore., Oct. 29.—(AP)—Hogs 500; 132 through and direct; Butcher prices steady to 10c lower; feeder pigs very slow; good to choice 162.25 lb., steers mostly \$9.50; load lots absent; quotable to around \$9.25; 230-270 lb. weights \$9.00-10; 320 lb. weights down to \$8.50; few light lights \$9.00-35; packing sows largely \$7.50; few choice local feeder pigs upward to \$8.50; liberal supply holdover midwestern feeders held around \$7.50.

CATTLE: 300, 3 direct; calves 25; 11 direct; market slow, mostly steady to weak; bulls around 25c lower for 2 days; scattered lots grass steers, \$4.50 to \$5.00; best held about \$6.50; common to medium heifers, \$4.00 to \$5.25; low cutter and cutter cows, \$2.50 to \$3.25; common to medium grades, \$3.50 to \$4.20; odd head good beef cows, \$4.50; few bulls, \$4.00-50; common to medium vealers, \$5 to 7; choice quotable upward to \$9.00; few common heavy calves, \$3.50 to \$5.00.

SHEEP: 400; 219 direct; market steady to weak; few good fat lambs, \$7.25-80; common to medium grades, \$5.50 to 7; medium 61-lb. shorn lambs, \$5.50; few common wethers, \$3.00; yearlings, \$4.00-50; common to medium ewes, \$1.25 to 2.50; choice quotable to \$3.00.

SOUTH SAN FRANCISCO, Oct. 29.—(AP)—Hogs 250; direct 120. Steady to 5c lower. Top and bulk good-choice 215-lb. California butchers, \$9.80; other weights absent; odd head medium packing sows, \$8.50; good light sows quoted to \$7.00.

CATTLE: 78, holdovers 25. Slaughterers steady; medium light grass steers slow, undertone weak; load medium-good 1100 lb. steers off beef tops, \$7.50; sorted 3 head; car 930-lb. weights, \$7.10; sorted 2 head; good light fed steers absent; quoted around \$8.00-50; heifers very scarce; range cows weak; load medium Oregon range cows, \$4.75; heavy cows sorted \$4; strictly good young range cows absent; quoted to \$5.50; few cutters, \$3.50-75; low-cutters eligible down to \$3.00; odd bulls, \$4.50 to \$5.25.

CATTLE: none. Nominal; good-choice vealers quoted \$8.50 to \$9.50.

SHEEP: 750; direct 290. Active. lambs 25c higher; ewes fully steady; wool-deck strictly good 82-lb. Oregon long-legged lambs, \$9.00; sorted 10 per cent; deck good 83-lb. medium-pelt fed lambs \$8.75; half deck good 100-lb. medium-pelt Oregon slaughter ewes, \$3.25; sorted 6 head, \$2.75.

CHICAGO, Oct. 29.—(AP)—U.S. Dept. Agr.—HOGS 24,000; opened fully steady; top 9.60; bulk good and choice 100-200 lb., 9.40-60; light lights and pigs unevenly higher; most 100-150 lb., 7.50-8.50; sows steady; better kinds 8.75-9.00; packer bidding 10-15 lower.

CATTLE 9,000; calves 1,500; general quality plain; few choicest steers and yearlings steady; 11.00 paid, some held higher; all others slow, weak with decline totaling 35-40 cents from best time early in week on plain heavies and medium and common grades of light steers; she stock slow; weak to 25c lower; cutters and low-cutters 10-15 off; bulls barely steady; mostly 5.85 down; vealers about steady early; top 10.00; closing 25-30 lower.

SHEEP 11,000, including 8,000 direct; fat lambs uneven; around steady to 25c lower; sheep and feeding lambs little changed; 40c native lambs 9.25 to local packer; bulk around 9.75-9.00; most western 8.85; top western ewes 4.10; bulk natives 2.50-3.75; feeding lambs 5.50-8.00

## Portland Wheat

PORTLAND, Ore., Oct. 29.—(AP)—BUTTER—Prima, A grade, 35c lb. in parchment wrappers, 35c lb. in cartons; B grade, parchment wrappers 34c lb., cartons 33c lb.

BUTTERPAT.—(Portland delivery, general price)—A grade delivered at least twice weekly, 37c lb.; country routes, 35-35 1/2 lb.; B grade, 34-35 1/2 lb. C grade at market.

EGGS—Buying price by wholesale: Extras 35c; standards 32c; extra medium, 23c; medium firsts, 22c; undergrade, 16c; pullets 13-15c; peewees 8c dozen.

LIVE POULTRY—Portland delivery, buying price: Colored hens, over 4 1/2 lbs., 17-18c lb.; under 4 1/2 lbs., 17-18c lb.; leghorn hens, 12-13c lb.; leghorn broilers, 1 3/4 lbs., 16-17c lb.; leghorn springs, 15c lb.; roosters, 8-9c lb.

Cheese and country meats steady and unchanged.

## Portland Produce

PORTLAND, Oct. 29.—(AP)—Wheat: Open High Low Close May .93 1/2 .94 .99 .99 Dec. .98 1/2 .98 1/2 .97 1/2 .97 1/2 Cash wheat: Big Bend bluestem, 12 1/2 pct., \$1.05 1/2; dark hard winter, 15 per cent, \$1.18 1/2; 12 pct., \$1.12 1/2; 11 pct., \$1.06 1/2; soft white and western white, 98c; hard winter, \$1.00; western red, 99c.

Oats, No. 2 white, \$30; gray, \$29. Barley No. 2 45 lb. h. w., \$34. Corn, No. 2 eastern yellow, ship, \$49.50.

Argentine, \$35. Millrun, standard, \$27. Today's car receipts: Wheat, 34; barley, 1; flour, 5; hay, 1.

## Chicago Wheat

CHICAGO, Oct. 29.—(AP)—Wheat: Open High Low Close Dec. 1.14 1/2 1.14 1/2 1.14 1/2 May 1.13 1/2 1.13 1/2 1.13 1/2 July .99 1/2 .99 1/2 .99 1/2 .99 1/2

## TWO BACKFIELDS TO CARRY BEAVER PUSH

CORVALLIS, Ore., Oct. 29.—(AP)—Two backfield sets of almost equal strength were ready today for Oregon State's thrust against Montana here Saturday.

Red-headed Joe Gray, known as the "Gray Ghost," will head the set which will include Elmer Goldberg at fullback, Bill Duncan, quarter, and Tom Swanson, right half. Colorful little Johnny Alexander will spark the attacking forces built around Dick Joslin, fullback; Bob Mountain, right half, and "Holly" Holcomb, quarter.

ALABAMANS ARRIVE FOR CLASH WITH BRONCHOS

SAN FRANCISCO, Oct. 29.—(AP)—Fifty-five football players from Alabama Poly arrived here early today and sat down to a Shrine luncheon with the Santa Clara Broncos, whom they will meet in a less social mood on the Kezar stadium turf here Saturday.

Coach Jack Magher will drill his Alabamans lightly this afternoon, while the Broncos return to their home field for final practice touches.

FOR PERSONAL LOANS OF ALL KINDS W. E. Thomas, 45 S. Central

## TRIED THIS TOBACCO 8 YEARS AGO—NO NEED EVER TO SWITCH AGAIN!

THAT P. A. IS THE SMOOTHEST, MOST FLAVORY TOBACCO I EVER MET UP WITH

"I never did run across a tobacco as mild and flavory as Prince Albert," says Alfred Doremus. "They say the reason it burns so slow and cool and sweet is because a special 'no-bite' process takes out all the harshness. And I got a lot more smoking out of that big, handy tin—around 60 pipefuls all the time."

Smoke 20 fragrant pipefuls of Prince Albert. If you don't find it the mildest, tastiest pipe tobacco you ever smoked, return the pocket tin with the rest of the tobacco in it to us at any time within a month from this date, and we will refund full purchase price, plus postage. (Signed) R. J. Reynolds Tobacco Company, Winston-Salem, North Carolina.

P. A. rolls into wonderful "makin's" cigarettes too.

Copyright, 1936, R. J. Reynolds Tobacco Company

## PRINCE ALBERT THE NATIONAL JOY SMOKE

## CALLISON'S CREW IN BATTLE MOOD

EUGENE, Ore., Oct. 29.—(AP)—The all-consuming football desire to step right up and knock over the conference-leading Washington Huskies at Portland Saturday placed the Oregon Webfoots and their usually dour young coach, "Prink" Callison in battle mood today.

"Turning optimist, Callison said: 'We're in just as good a spot to turn in an upset over Washington right now, as we were last year when we won, 7 to 6. Our squad is in fine condition and you couldn't ask for better spirit.'"

With Sophomore Tom Blackskin in

## "Good Morning, Bergmann's"

—the logger's feet remark, smiling!

It's sure a great thing to have your feet really friendly with your shoes.

All over the West, outdoor men know and appreciate Bergmann Outdoor Shoes.

There's a pair for every outdoor need requiring a husky shoe.

## C. M. KIDD & CO.

Southern Oregon's Oldest Shoe Concern

"True Value All Thru"

Be sure the picture of this Bergmann is on the box.

## BERGMANN Outdoor SHOES

This Bergmann Shoe Mfg. Co. 181 1/2 N. W. 26th Avenue, Portland, Oregon

## SMALL MONTANA WINS NOD OVER SANCHEZ

OAKLAND, Calif., Oct. 29.—(AP)—The world's featherweight champion, small Montana of Manila, chalked up a 10-round decision today over Peppy Sanchez of Los Angeles.

## PRE-WINTER ADVANCE SALE!

Get More For Your Motoring Dollar—Buy Goodrich Products

Don't let Old Man Winter catch you napping. Now is the time to get everything you need for "trouble-free," comfortable driving all winter long. Drive in now and see for yourself why your dollar will buy more safety and comfort when you deal with us. Our "Square Deal" policy is your best protection.

Compare our Values

## EXTRA VALUE! AJAX PLUS ANTI-FREEZE 25¢ QUART

OTHER HEATERS \$6.95

## "SHIVER-PROOF" YOUR CARNOW!

The new Goodrich Hot Water Heater is specially built to give 64% more heat units at a price actually less than you used to pay for old type heaters. Don't be left out in the cold this winter. Come in and see this heater marvel now.

## SPECIAL TIRE FOR TOUGH GOING!

Built with tractor grip for getting you through snow and mud. Avoid grief. Get a set of Goodrich Super-Traction Silvertown tires. They cost no more than other standard tires.

## NOTE THIS VALUE Goodrich RADIATOR SOLDER 10 OZ. CAN 49¢

## FREE! 6 POINT BATTERY TEST

Remember, winter is hard on your battery. Regardless of the car, we'll gladly give you an exclusive 6-Point Battery Service to keep it fit for winter use and save you trouble. Latest certified testing equipment.

## SKID PROTECTION FREE!

Imagine it! The tread construction of the new Goodrich Safety Silvertown has a regular "winding shield" wiper action. The big center ribs sweep away water and slush, leaving the husky cleats of the tread a dry surface to grip and thus protecting you on wet, slippery roads. Put Silvertown on your car now and then you'll also have the only tire in the world that gives you Golden Ply Blow-out Protection. Yet, remember, with all these extra life-saving features, Silvertown costs much less than other super-quality tires!

## Goodrich SAFETY SILVERTOWNS

## Goodrich QUALITY ACCESSORIES

## NO MONEY DOWN

## ON GOODRICH TIRES - BATTERIES

MOTOROLA CAR RADIOS DELCO HOME RADIOS NEW GOODRICH HEATERS USE

## Our Original Budget Pay Plan

There Are NO JUSTICES • NO RED TAPE • NO DELAYS

Just show us your License Certificate. Liberal credit easily arranged. No embarrassment. We install your purchase at once.

## LEWIS SUPER SERVICE STATION

FORDSON SALES, SERVICE and PARTS 8th and Front Phone 1300 We Never Close