

AUTOMOTIVE NEWS

ABBEY DISPLAYS NEW MODELS FOR 1937 NASH CARS

Bigger and roomier and designed to the public taste in streamlined beauty, three new series of 1937 Nash and LaFayette automobiles are offered by Walter W. Abbey, Inc.

The three series announced by Mr. Abbey are:
The Nash Ambassador Eight, aristocratic leader of the Nash line, built on a 125-inch wheelbase, powered by the Nash eight-cylinder, valve-in-head, twin-ignition motor which develops 105 horsepower, and fitted with luxurious appointments.
The Nash Ambassador Six, generously designed on a 121-inch wheelbase, equipped with the Nash six-cylinder, valve-in-head, 95-horsepower, twin-ignition engine, and like its companion Ambassador, a quality built car.

The Nash LaFayette "400" with a 117-inch wheelbase, 90-horsepower Monko-sealed motor, a bigness and roominess rare in automobiles of the lowest price field, and appointments in keeping with the high Nash standard.

Although all of the 1937 Nash offerings are readily recognized as members of the Nash family, each has distinguishing characteristics.

The Nash Ambassador Eight and the Nash Ambassador Six are identical in many respects. Radiator ornaments and treatment of headlamps, however, give different front end appearance, while in decoration of the trunk in the rear also makes for ease of identification.

The Nash LaFayette "400" is easily recognized because the bars of its die-cast radiator grille run horizontally instead of vertically, as on the two Ambassador series.

General design improvements on all three lines are many, and bring a new and smart styling to the auto-

mobile field. Each of the new 1937 Nash series has been designed to conform to accepted streamlining principles.

Handsome stainless steel strips on the hood are for decoration only, exhaustive tests by Nash engineers having proven that hood louver openings add nothing to engine ventilation.

One-piece seamless steel tops not only greatly increase body rigidity and serve as added passenger protection, but also make possible a new beauty in top treatment.

Increased comfort has been engineered right into the 1937 Nash LaFayette series by several design advances. Seats are wide, and provide ample room for six passengers without crowding. Recessed arm rests in rear seats increase comfort of back-seat passengers. Head room has been increased to a point where it is from one to two inches greater than usually found in a modern motor car. Floor tunnels have been eliminated, providing greater footroom.

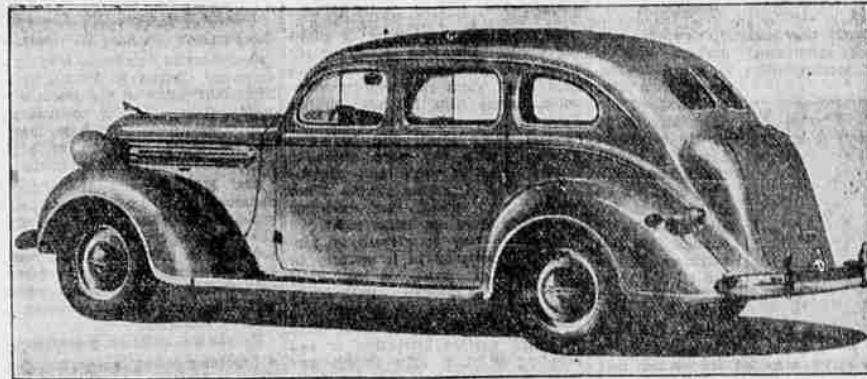
In the front seat compartment, roominess has been increased by mounting the hand brake on the dash.
The popular "sleeping car" feature of the Nash of 1936 has been placed on the Ambassador series for 1937, improved and refined. In all 1937 Nash LaFayette cars a six-foot four-inch double bed may be made up in the back seat in ten minutes. The cushions serve as a mattress, and the back of the rear seat lifts up to provide a clothing shelf, similar to those in Pullman berths.

To protect passengers entering or leaving the cars during rainy weather, drip mouldings have been placed over the doors in all models.

Interiors have been designed with an eye to luxury and comfort. High quality upholstery and upholstery trim, modernistic hardware, convenient ash receivers, beautiful instrument panels, . . . all blend into the harmonious treatment of the inside of the new Nash LaFayette models.

Many mechanical improvements and refinements are added to cars already considered models of mechanical excellence. Important among them is the ride stabilizer, eliminating body sway on curves, providing improved steering ease, and serving to straighten the cars out after a turn

Pierce Allen Shows New Dodge 4-Door Sedan



Everything that contributes to driving and riding comfort seems to have been provided in this 4-door touring sedan of the new Dodge line. Seats 48 1/2 inches wide, improved visibility due to large windows and slender corner posts, wide doors and a variety of novel safety provisions are built into the chassis and all-steel bodies of these deservedly popular cars.

Dressler's New Richfield Station Now Open



Offering a complete line of Richfield products, Harley Dressler's new, modern Richfield service station opened last week at the corner of Main and Holly streets. The station is built on a new type Richfield design which is being used all along the coast to offer Richfield products in uniform stations with uniform service.
Mr. Dressler, who was formerly employed by the Gold Seal Creamery, has operated Richfield service stations in California for the past two and one-half years.

The new station will feature Richfield gasoline, Richlube motor oil, Richlube gear grease and a complete and certified lubrication service. Dressler is distributor for Yale tires and Richfield Eagle batteries.

entirely to custom standards by LeBaron, the greatest designer of automobile bodies in America," Lange said. The new Imperial Eight will be the most luxurious low priced car ever produced by Chrysler, said Mr. Lange.

Leonard Carpenter, well known local fruit man who is now traveling in the east, was the first person in this section to place an order for a new Imperial Chrysler. It will be an Imperial convertible coupe. "We have already taken orders for three new custom Airflow sedans to be delivered in the near future," Lange said.

Mr. Lange stated yesterday, "Any-one wanting to verify this fact can any time drive this car and make his own test. Seeing is believing. This remarkable mileage in a car of the size of the new Chrysler Royal with a 98 horsepower motor is entirely due to the genuine Chrysler automatic overdrive which has been used by Chrysler in the Airflow models since 1934."

Chrysler originated this device and the automatic overdrive was first used by Chrysler in the sensational new streamline Chrysler Airflow created by the Chrysler corporation, according to Mr. Lange.

"The automatic overdrive makes it possible to get as high as 18 to 19 miles per gallon on the Imperial Chrysler Airflow at average driving speeds. In the first shipment of three carloads of Chrysler cars due to arrive by next Saturday there will be some of the new Imperial 80's. This particular car is a new addition to the Chrysler line and can be had in the deluxe models in 121 inch wheel base, and the custom built seven passenger models in the custom Imperial with 140 inch wheel base," Mr. Lange stated.

"The new Imperial Eight will have the same motor, transmission, overdrive and hypoid rear axle as used in the 1935 Airflow eight. This new motor develops 130 horsepower and is beyond a doubt the fastest and most powerful car of its size and weight on the market. The bodies are built

Wool Market Stronger
BOSTON, Oct. 24.—(AP-U. S. Dept. Agr.)—A strong market for wool developed in Boston during the past week. The increased volume of sales was sufficient to create an upward price trend which started on medium grades and later spread to the finer wools.

FUEL OIL, any amount. Call 1184 Petroleum Heat & Burder Co.
Use Mail Tribune want ads.

THREATEN COLBY WITH KNIFE FOR ANTI-FDR TALK

HARTFORD, Conn., Oct. 24.—(AP)—Bainbridge Colby, secretary of state under President Wilson, left Hartford today under a police escort following a telephoned "tip" that an attempt would be made to "knife" him at the close of a Republican rally.

Colby, addressing himself to "non-sensationalists," at the rally last night charged President Roosevelt with being a voluntary or involuntary recipient of communist support and asserted "if his plans succeed, there will be no Democratic party."

The tip, one of several received yesterday, was telephoned to Burnham Memorial hall where Colby spoke.

"Will you get word to somebody that there is someone in the fourth or fifth row who will knife Mr. Colby at the conclusion of his address?" a woman's voice said over the telephone, which was answered by one of the attendants at the hall.

Two police officers and the crew of two police cruisers went to the hall, reinforcing two policemen already on duty there.

Police officers were stationed so they could observe any acts of the audience without being seen. The audience remained unaware of the situation.

At the close of Colby's address, nothing untoward happened.

Police escorted Colby from the hall to the Hartford club and then to his train.

OPINION MONDAY MILK PRICE CASE

PORTLAND, Oct. 24.—(AP)—A decision in Portland's milk price dispute probably will be handed down Monday, Circuit Judge Louis Hewitt announced when final arguments were heard.

Motions by A. E. Clark, milk board attorney, asking a dissolution of the temporary injunction restraining the board from putting into effect an increase of from one to three cents and dismissal of a suit asking the injunction be made permanent were taken under advisement by the court.

Clark, in arguing for the motions, said there had been no consumer protests to the proposed increase. Plaintiffs, he said, had not proved there was not a scarcity of pure milk in the Portland area, advanced by the board as one of the reasons for the price boost.

GUN SIGHTS to fit all guns. Sims Bros. 23 N. Fir. Guns re-bored.
Use Mail Tribune want ads.

CONTESTS LOOM ON CCC VOTING, ALL CLOSE CONTESTS

SALFORD, Oct. 24.—(AP)—Possibility of election contests, which might even reach the state supreme court, in the event of close races in the election November 3 appear highly likely as the result of several unofficial inquiries received by state officials from eastern Oregon points.

As yet the attorney general's office has not had the question presented, but a candidate in one eastern county and an officer in another raised the same point in personal letters to two different state officials. A study resulted, the finding of which would prove highly susceptible to court challenges.

Before the matter can come to the official attention of the attorney general, the question must be put to him, under the state law, by a state or district official. In these two cases

the district attorney of either county could bring the matter up for an opinion, which, however, could be overruled by a court.

The constitutional provision upon which the point was raised is that "for the purpose of voting, no person shall be deemed to have gained or lost a residence by reason of his presence or absence while employed in the service of the United States . . ."

This, in view of the next constitutional section disfranchising soldiers and sailors outright from voting within the state, made it appear a debatable point, one side contending the CCC camps, of which there are about 60 in Oregon, are operated along army lines with the members enrolled for six months. Another view is that they are civilians, even though moved from place to place at the will of the government.

Requisition Issued
SALFORD, Oct. 24.—(AP)—Governor Martin issued a requisition for the return of Mary Young to Multnomah county where she is charged with embezzlement. She was reported to be in Spokane and the requisition was made on the governor of Washington.

Buckingham's Ice Cream, Candy & Party Specials The Great 250 & Cent.

For the Finest Work at the Prices Fairest

AUTO TOPS

TAKE IT TO AN EXPERT

Phone 687

All tops and seat-covers sold by us are manufactured in Medford, by Medford labor. Only expert trimmers work on your car.

25 YEARS EXPERIENCE in General Automobile Upholstery

Seat Covers Cushions Side Curtains Tops Vacuum Cleaning

Hohlweg's Top Shop
BARTLETT AT EIGHTH

"It's Buick Again!"

NOW ON DISPLAY

New 1937 Models With

- More Beauty for Dazzling Style
- More Power for Breath-Taking Action
- More Room for Full-Family Comfort
- More Downright "Road Command" for Safety and Pleasure

SEE THEM AT

Skinner's Garage

143 So. Riverside Phone 102

CHRYSLER ROYAL 6 HAS HIGH AVERAGE IN MILEAGE TESTS

The new 1937 Chrysler Royal 6 is proving to be the most economical car ever produced by the Chrysler corporation, according to H. F. Lange of the Lange Motor Car company. On actual tests conducted by Mr. Lange, the average mileage made at 45 miles per hour was 22 miles per gallon, and 18 miles per gallon at 60 miles per hour.

Mr. Lange stated yesterday, "Any-one wanting to verify this fact can any time drive this car and make his own test. Seeing is believing. This remarkable mileage in a car of the size of the new Chrysler Royal with a 98 horsepower motor is entirely due to the genuine Chrysler automatic overdrive which has been used by Chrysler in the Airflow models since 1934."

Chrysler originated this device and the automatic overdrive was first used by Chrysler in the sensational new streamline Chrysler Airflow created by the Chrysler corporation, according to Mr. Lange.

"The automatic overdrive makes it possible to get as high as 18 to 19 miles per gallon on the Imperial Chrysler Airflow at average driving speeds. In the first shipment of three carloads of Chrysler cars due to arrive by next Saturday there will be some of the new Imperial 80's. This particular car is a new addition to the Chrysler line and can be had in the deluxe models in 121 inch wheel base, and the custom built seven passenger models in the custom Imperial with 140 inch wheel base," Mr. Lange stated.

"The new Imperial Eight will have the same motor, transmission, overdrive and hypoid rear axle as used in the 1935 Airflow eight. This new motor develops 130 horsepower and is beyond a doubt the fastest and most powerful car of its size and weight on the market. The bodies are built

DEFINITE STAND ON BILLS TAKEN

PORTLAND, Oct. 24.—(AP)—Definite stands on six of the eight state measures to be balloted upon in November were taken by two of the city's largest civic organizations today.

The city club voted opposition to the school tax amendment and the non-compulsory military training bill after heated debate while the board of directors of the chamber of commerce announced opposition to the proposed advertising amendment, state power bill, hydroelectric board, state bank bill and the non-compulsory military training measure.

New 1937 Pontiacs At Skinner's Soon

A car load of the new 1937 Pontiac automobiles is due to arrive in Medford tomorrow or Tuesday, according to R. A. Skinner, of Skinner's Garage, local Buick and Pontiac dealer. The new models will be placed on display as soon as they arrive.

R. A. Skinner will leave for Portland the last of the week to attend a Pontiac dealers meeting.

To Train Firemen.
EUGENE, Oct. 24.—(AP)—Herman Kehrl of the University of Oregon bureau of municipal research and secretary of the League of Oregon Cities, said today that the first step in establishing a uniform training program for firemen will be taken October 26 at Salem.

AMERICA'S LARGEST SELLING GASOLINE

Mobilgas

GENERAL PETROLEUM CORPORATION

FIVE CAR LOADS OF NEW 1937 CHRYSLERS and PLYMOUTHs

will be ready for delivery here within the next eight days

NOW ON DISPLAY

The New 1937 Chrysler Custom 8 Airflow, New 1937 Chrysler Royal Sedan and the New 1937 Plymouths

LANGE MOTOR CAR CO.
38 North Riverside

LET US QUOTE YOU—NEW LOWER PRICES ON THE SENSATIONAL 1937 DODGE and PLYMOUTH

Bigger — Smarter — More Economical Than Ever Before — The New Dodge

COSTS BUT A FEW DOLLARS MORE THAN THE LOWEST PRICED CARS

—The New Plymouth COSTS LESS Than All Other Cars of Its Low Price Class

See Them Today—Get the Amazingly Low Prices!

PIERCE ALLEN MOTOR CO.

DODGE AND PLYMOUTH DISTRIBUTORS
112 So. Riverside, L. C. TAYLOR, Managing Owner Phone 150