

**REV. SHERMAN DIVINE
TO BE INSTALLED AT
FIRST PRESBYTERIAN**

Rev. Sherman Landon Divine, D. D., M. D., will be officially installed as pastor of the First Presbyterian church of Medford on Sunday, October 18, at 7:30 p. m., with church dignitaries from coast states here for



Rev. Divine

the service. Rev. Divine succeeds Rev. R. W. Peterson, who left some time ago to take up a pastorate in Alaska.

Rev. S. H. Jones of Jacksonville moderator of the Southwest Oregon Presbytery, will preside and propound the constitutional questions. Rev. Herman S. Reichard, D. D., of Grants Pass will preach the sermon and Rev. E. S. Bartlam of St. Marks Episcopal church here will give the invocation. Rev. Merle Edwards of Ashland will read the scriptures and Rev. E. P. MacFarlane of Phoenix will give the prayer of installation.

Rev. James Thomson, D. D., of Seattle, synodical superintendent of Washington, Oregon and Idaho, will charge the pastor, and Rev. Walter L. VanNuy, D. D., of Portland, will charge the people.

An informal reception, with the public invited, will follow the installation services.

Dr. Divine has held many outstanding pastorates in various parts of the United States. He was pastor of the Woodward Avenue Presbyterian church of Detroit, Mich., and of the Central Presbyterian church in Rochester, N. Y. On the Pacific coast he has been pastor of the First Presbyterian church of Spokane, Wash., and of the Westminster Presbyterian church in Sacramento.

He has been the leader in the building of six churches, among them the Woodward Avenue church in Detroit and the Westminster church in Sacramento. While he was in Sacramento he was chaplain of the senate in California, through 1931 and 1932 and for three years, from 1919 through 1922, was a member of the general assembly's executive commission. In 1921 he was chairman of the Russian-Turkish-Greek relief commission.

For five years Dr. Divine was chairman of the Near East relief commission of the Presbyterian church and a member of Governor Martin's arbitration board in Washington in 1935 and up until his coming to Medford.

Meteorological Report

October 16, 1936

Forecasts
Medford and vicinity: Fair tonight and Saturday; somewhat warmer Saturday.

Oregon: Fair tonight and Saturday; somewhat warmer in southwest portion Saturday.

Temperatures a year ago today:
Highest, 62; lowest, 40.

Total monthly precipitation, trace; deficiency for the month, 0.52 inch. Total precipitation since September 1, 1936, 0.35 inch, deficiency for the season, 0.69 inch.

Relative humidity at 5 p. m. yesterday, 24 per cent; 3 a. m. today, 48 per cent.

Sunrise tomorrow, 6:26 a. m.
Sunset tomorrow, 5:27 p. m.

Observations Taken at 5 A. M., 120th Meridian Time

CITY	High Temp	Low Temp	Wind	Clouds	Moisture
Boise	70	40		Clear	
Boston	68	58	T.	Cloudy	
Chicago	74	56		P. Cls.	
Denver	54	40	P. Cls.		
Eureka	64	50		Clear	
Helena	50	34	P. Cls.		
Los Angeles	65	52	T.	P. Cls.	
MEDFORD	77	57		Clear	
New York	68	58		Cloudy	
Omaha	78	54		Cloudy	
Phoenix	98	74		P. Cls.	
Portland	68	52		Clear	
Reno	58	40		P. Cls.	
Roseburg	70	40		Clear	
Salt Lake City	58	50	T.	Clear	
San Francisco	80	70		Clear	
Seattle	62	52		Clear	
Spokane	68	40		P. Cls.	
Walla Walla	68	48		Clear	
Washington, D. C.	74	64		Cloudy	

**14-MONTHS-OLD SON
HAS SIXTEEN TEETH**

LEXINGTON, Ore., Oct. 16.—Mrs. John McMillan has offered her 14-months-old son as a candidate for the tooth-cutting championship of the United States.

A Medford, Mass., mother claims 12 teeth for her 11-months-old child. But that's nothing in the Lexington home. The McMillan had had eight teeth at six months, an even dozen at a year, and 16 at 14 months.

DANCE
Royal Neighbors Good Time Dance Saturday, Oct. 17th, at the U. B. Hall, Jacksonvilles. Silva's Orchestra. Admission, Gentlemen 50c, Ladies 10c. Come—Eat—Dance till 2.

GROCETERIA SUPER FOOD MARKETS
ONE SHOPPING STOP FOR EVERYTHING

Home Purity Bakery
Bread and Cakes Like
Mother Made



Lemon Butter Cake
Rich lemon butter between golden yellow layers, iced and topped with lemon butter. 2 sizes.
25c — 49c

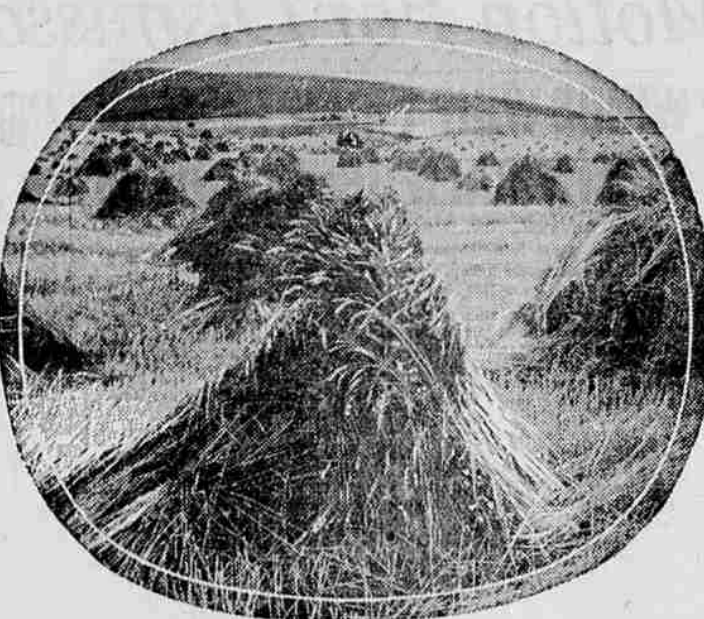
Home Purity Ozark Apple Rolls
Very popular a few months ago—now we offer them again.
Pan of 8 rolls—20c

Home Purity Orange Rolls
A tasty sweet filled with Orange jam—so popular last week—here they are again.
6 for 10c

Danish Almond Brittle
Rich crunchy Danish pastry.
3 for 10c

Mince Pie
Serve hot for fine flavor—try a piece at the fountain tomorrow.—10c.
2 sizes—25c—35c

**AUTUMN SALES OF
SPERRY CEREALS**



FRESHNESS, the first essential to the quality of many foods is doubly essential to cereals—take Wheat Hearts for example—Farina type cereals are recognized as the best source of vitamin B—the growth germ. If sold fresh the wheat germ may be added thereby increasing the vitamin content 11 times. Sperry Wheat Hearts always fresh—have the wheat germ added and contain 88.4% more vitamin B than whole wheat and 11½ times more than ordinary Farina-type cereals. Packed in the big Sperry cereal mill at Portland, Sperry cereals arrive at the local branch weekly—clean, pure, wholesome and best of all fresh. It always pays to buy Sperry's.

Sperry Cereals and Other Savings in the Groceries
"A DEPENDABLE SOURCE OF SUPPLY"

- Sperry Rolled Oats (fresh) 3 lb. pkg. 19c
- Sperry Rolled Oats (fresh) 9 lb. sack 38c
- Sperry Cereal Flakes (fresh) 10 lb. bag 39c
- Sperry Wheat Flakes (fresh) 3 lb. pkg. 19c
- Sperry Wheat Flakes (fresh) 10 lb. bag 43c
- Sperry Farina (fresh) 5 lb. bag 25c

FRESH SPERRY WHEAT HEARTS with WHEAT GERMS

28 oz. pkg. 22c
10 lb. sack 67c

- Sperry Farina (fresh) 10 lb. bag 48c
- Sperry Graham Flour (fresh) No. 10 bag 37c
- Sperry Corn Meal (fresh) No. 10 bag 33c

- Van Camp's Hominy 22½ oz. can 3 for 25c
- Snowdrift Shortening, 3 lb. pail 55c
- Snowdrift Shortening, 6 lb. pail \$1.09
- Lake Wales Grapefruit, No. 2 tin 11c
- Dainty Mix Fruit Cocktail No. 1 tin 2 for 23c
- S & W Currants 15 oz. pkg. 20c
- Candied Orange, Lemon or Citron lb. 29c

- Corn Husks (large size—well trimmed) lb. 25c
- Sperry White Rose Flour, 49 lb. sack \$1.59
- Sunglow Flour 49 lb. sack \$1.39
- Peets Granulated Soap large pkg. 25c
- Crystal White Soap 10 bars 29c

Fountain Refreshments
Strawberry Banana Cup

Strawberry Ice Cream on a serving of banana, crushed strawberries, marshmallow syrup topped with maraschino cherry. 10c

MARSHMALLOW NUT SUNDAE

Chocolate Ice Cream
Marshmallow Syrup topped with nuts 10c

Home Purity ICE CREAM

Ice cream is now as much a winter dessert as a summer one—take home a pint or quart—after the day's work is done, and the family gathers around a nice warm fire, they will surely enjoy it.
Pts. 15c Qts. 29c

— THE HOME OF —
"Groceria Goodness"

- Bisquick small family pkg. 17c
- Bisquick large 40 oz. pkg. 29c
- Sperry Pancake Flour, 28 oz. pkg. 17c
- 4 lb. sack 25c No. 10 sack 49c
- Del Monte Pumpkin (new pack) No. 2½ can 9c
- Merrimac Peas No. 2 can, 2 cans 23c

HOME-PURITY MAYONNAISE AND SANDWICH SPREAD

Pint 20c Quart 39c

Z-MOR-U COFFEE

To find the right kind of coffee is a problem in most every household—we solved this problem in our fountain by serving Z-MOR-U—Here is a coffee, ground fresh daily to insure fullness of flavor—serve it in your own home for real coffee satisfaction.

lb. 25c - 3 lb. 73c

SUPER MEAT MARKETS



Quality and Economy go hand in hand at your Super Market.
With the Finest steer beef at popular prices your saving is assured while your family enjoys the finest meats obtainable.
Economy with assured satisfaction is the only practical thrift.

- Steer Beef Pot Roast lb. 15c
- Steer Beef Short Ribs, lb. 12½c
- Country Style Pork Sausage, lb. 20c
- Country Style Little Link Sausage, lb. 25c
- Young Hens lb. 19c
- Swift's Circle S Picnics, lb. 26c
- Cottage Butts lb. 30c
- Huber's Condensed Chili, lb. 25c
- Fresh Oysters pint 25c

Fruits & Vegetables

- Florida Grapefruit size 64's 3 for 25c
- Sunkist Lemons, size 360's dozen 21c
- Sunkist Oranges, small but very juicy, . . . 2 doz. 35c
- Sunkist Arizona Grapefruit, size 80's . 4 for 19c Dozen 45c
- Artichokes (large size) 3 for 20c
- Celery Hearts, large bunches 10c
- Spinach, home grown, large leaves . . 2 lbs. 15c
- Banana Squash, lb. 1c
- Green Peppers, large thick ones 3 lbs. 10c
- Cucumbers, large ones, 3 for 10c
- Egg Plant 3 lbs. 10c
- Cranberries, large size, 2 lbs. 35c

6th at Central Savings Without Self-Denial
GATES & LYDIARD
Delivery of \$1.00 Orders Phone: West Side 428 East Side 752