

Mann's Department Store Celebrates Its 26th Anniversary In Medford

**STORE WIDE SALE
BEGINS SATURDAY
OBSERVING EVENT**

John Moffatt General Manager—Hinman Advertising Manager—Store History and Growth Outlined

Mann's Department Store is celebrating the completion of 26 years of successful business in Medford with a store-wide selling event opening tomorrow. This anniversary event also marks the first year of the operation of Mann's remodeled store and southern Oregon and northern California people will be offered outstanding anniversary values as Mann's expression of appreciation for more than a quarter of a century of generous patronage.

Completely remodeled and air-conditioned, Mann's Department Store is one of the state's most attractive shopping centers. Thoroughly departmentalized throughout, every item of apparel for every member of the family is offered to those who shop in this long-established store.

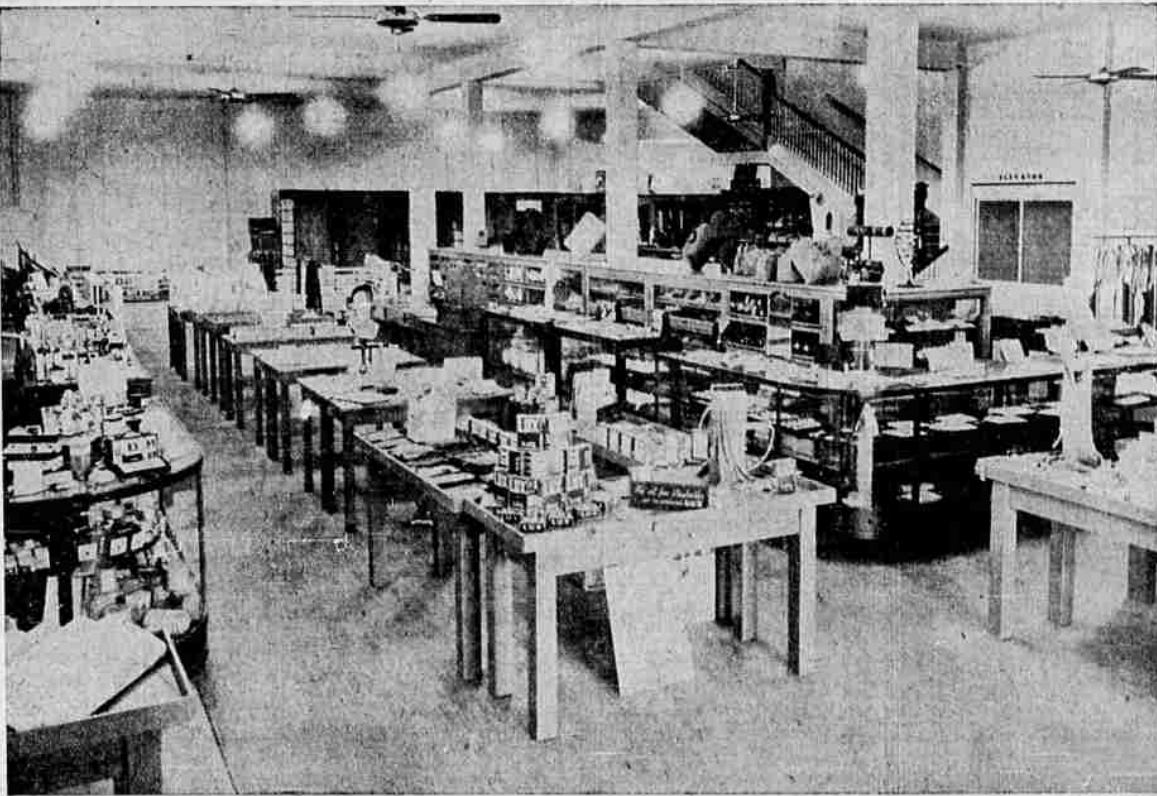
For 25 years John Moffatt has been associated with John Mann and is now general manager of the entire store. Under his capable direction, the merchandising program has been decidedly successful. Harry S. Hinman, artist and advertising man, has had charge of advertising and store displays for the past eight years. Mr. Hinman has received much praise for the artistic arrangement of merchandise in Mann's spacious Central avenue windows and Main street men's department windows as well as the outstanding advertising copy he has prepared regularly for the advertising columns of the Mail Tribune.

Mr. Mann's reminiscences of more than a quarter of a century ago are interesting. He went to work in a general merchandising store at Goodrich, Ontario, 55 years ago for \$5 a week. He served a three years' apprenticeship and at that time was 17 years of age. Following that early experience John Mann clerked at Maseley's dry goods store in St. Paul, Minn., and purchased the business at the end of that period.

Mr. Mann had heard of the possibilities of the southern Oregon territory, and finally bought a ticket to Medford, with a return ticket to his former location in case he might be disappointed. Hutchinson's and Baker's store on North Central avenue was conducting a bankrupt sale. The entire stock was bought by the newcomer, who then proceeded to establish Mann's Department store, specializing in women's apparel and

(Continued on Page Four.)

Glimpses of Mann's Store Showing Remodeling Completed in 1935



Mann's Department Store's store-wide program was completed in August, 1935, making this store one of the most modern and attractive in the state. Top view: A partial view of Mann's main floor from the Central avenue main entrance. A portion of the shoe department and men's section is shown in the extreme back. The men's department has an entrance on East Main street. Bottom: A glimpse of the second floor ready-to-wear and millinery departments. A spacious, attractive lounge, beauty salon, alteration rooms and offices are also located on this floor.

Founder



John C. Mann, active in Medford business and civic affairs of Medford, founded Mann's Department Store in this city in 1910. Under his inspiring leadership, Mann's has grown to be one of Oregon's best known stores. Mr. Mann has long been identified with civic advancement movements and church activities of this community.

Workmen Picket Offices Of WPA

NEW YORK, Oct. 2.—(AP)—Democratic Chairman James A. Farley and others were sued for \$100,000 damages in the state supreme court today by two advertising writers, Vincent J. Danton and Claire H. Masters, who allege the Democratic national committee unlawfully appropriated their ideas for a campaign slogan and placard.

See Mail Tribune want ads.

PORTLAND, Ore., Oct. 2.—(AP)—The Oregon Workers' Alliance continued to picket the old postoffice building here today in protest against an order by the works progress administration transferring about fifty men from the Wilson River road to the Wolf Creek project.

The alliance said the change meant a wage cut from \$15 to \$13 a month and branded WPA as "unfair" and charged a lockout.

RUMMAGE SALE, Saturday, by Chapter AA, P. E. O., 407 East Main.

Staff Competition Feature Of Mann's Anniversary Event

The entire staff at Mann's Department Store has been divided into three teams to compete in a sales contest which will begin Saturday and continue until the end of the twenty-sixth anniversary event, John Moffatt announced today.

Members of the winning team will be treated to a dinner by the losing teams, and an additional prize will be awarded by the store. Anniversary sale prices in all departments of Mann's are expected to attract hundreds of patrons from southern Oregon and northern California.

Judge Sentences Former War Buddy

LOS ANGELES, Oct. 3.—(AP)—In a dramatic scene in superior court today, Judge Frank Smith sentenced Lester H. Brockway, with whom he shouldered arms in the same company during the world war, to serve from one to 14 years in San Quentin prison.

Brockway was convicted of embezzlement and grand theft after admitting he had taken, in nine years

about \$15,000 from the bureau of water and power, for which he was assistant cashier.

He was a buck private and Judge Smith a sergeant in Company D, 364th Infantry regiment, 91st division, in the war.

San Francisco Butter
SAN FRANCISCO, Oct. 2.—(AP)—Butter: Score 92, 35 1/4; 91, 33 1/4; 90, 33; 89, 32c. Eggs and cheese unchanged.

SACRAMENTO, Calif., Oct. 2.—(AP)—Churning cream butterfat: First grade, 39c; second grade, 37 1/2c.

STOMACH, RECTAL AND COLON AILMENTS

STOMACH—Ulcers, Acidity, Indigestion.
RECTAL—Fissures, Ulcers, Prolapse, Florida.
COLON—Colitis, Bloating, Gas, Constipation.
No hospital surgical operation. No confinement. Write or call for FREE BOOKLET.
Dr. C. J. DEAN CLINIC
Physician and Surgeon
N.E. Corner Burnside and Grand Avenues
Telephone LA 3318 • Medford, Oregon

For a Home As an Investment
JACKSON COUNTY FARMS
FOR SALE
Stock Ranches Diversified Farms
October 5 and 6
At the Office of
National Farm Loan Secretary-Treasurer
202 Liberty Building
Medford, Oregon
Call on Sec. Treas. Warren Patterson and our Fieldman,
Mr. C. A. Barnes—they will be glad to help you with your
land problem
THE FEDERAL LAND BANK OF SPOKANE
Low Interest Rate Convenient Terms

HARVEST SPECIALS

Saturday ONLY
STAR LEAF RAKES
Made of the best bamboo, well bound and reinforced. Teeth will not dig up grass.
16c
Reg. 25c. Limit two

Call us when you need anything in **HARDWARE**. Prices That Please.
BE SURE TO COME IN and See the Coleman LANTERNS

14 in. Stillson Wrench.....\$9c
18 in. Stillson Wrench.....\$1.29
24 in. Stillson Wrench.....\$1.79

PYREX
Stock reduction
20% off

DOOR MATS
14x26
88c

Rising Sun Stove Polish
18c

Childs' Steel Lunch Satchel Kit. Baked Enamel finish. Sanitary tin lining inside. Vacuum bottle with cup.....**\$1.39**

MINING SHOVEL
20-in. handle, heat-treated blade, spring point. That famous Stillson brand—fully guaranteed.
Reg. \$2.00.....**\$1.65**

WALLPAPER SALE
20% - 50% OFF
See Our Patterns

Fireplace Tool Set
Brush, Poker, Shovel, Antique brass finish, sturdy built for service.
\$2.98
Set
Wood Baskets, Screens

TOWN and COUNTRY
PLAID WOOL SHIRTS
PLAID WOOL JACKETS
HORSE HIDE JACKETS
In Black and Brown Knit Collar and Bottoms
Sewing and detail found only in Town and Country jackets. Full cut and wind-proof

Wearever Special
French Fryer. Fine mesh basket & heavy pan.
Reg. \$1.50.....**\$1.39**

Double Boiler. Seamless. Easy clean dome cover. Smooth bottom.
Reg. \$1.95.....**\$1.49**

Percolator, 6 cups. Easy clean cover. Flavor Seal top. Wide bottom gives quick heating.
Reg. \$2.50.....**\$1.95**

Jumbo Sauce Pan Set. Round corner. Easy to clean.
Set of 3.....**\$2.19**
Reg. \$2.95

Here You are Sure of Both—
QUALITY and VALUE

HERE THEY ARE
Shop Saturday and Next Week at Your
F-B-A STORE

MEDFORD The SERVICE GROCERY MIDWAY CASH STORE C. W. SHORES J. W. COOK WALDEN BROS. DARK'S GROCERY SUMMIT GROCERY H. W. DAVISSON J. G. CAMERON Crater Lake Highway	TALENT PARKS GROCERY GOLD HILL A. A. WALKER RIVIERA AUTO PARK ROGUE RIVER FRED O'KELLEY WILDERVILLE H. W. BAKER SELMA R. L. HAMMER HOLLAND H. FLOYD TAKILMA H. MESSINGER RADIO PARK C. R. BROCK JACKSONVILLE HAMAKER'S CASH GROCERY
--------------------------------------------------------------------------------------------------------------------------------------------------------------------------------------------------------	----------------------------------------------------------------------------------------------------------------------------------------------------------------------------------------------------------------------------------------------------------------------------------------------------------------------------------------------------------

ASHLAND
EAST SIDE GROCERY

PHOENIX
PHOENIX MERCANTILE
HIWAY MARKET

GRANT'S PASS
B & B FOOD STORE
TEMPLE MARKET

Here are REAL OPPORTUNITIES to SAVE. Recognized quality merchandise at prices made possible by over 4000 stores buying power! Don't forget—At the FBA Sign You SAVE!

PALMOLIVE Stokley Tomato Juice 50 oz. can 24c	PALMOLIVE bar 5c
Tuna Fish 1/2 flat Belvedere brand 15c	String Beans Fully Ripe Brand No. 2 can 2 for 25c
SALT LESLIE 2lb. Pkg. Plain or Iodized 2 pkgs. 15c	COFFEE MAXWELL HOUSE 1lb can Can . 28c
HERSHEY'S BREAKFAST COCOA Pound can 11c	SHORTENING 4 lb. carton Westminster . . . 43c
SNOWFLAKE CRACKERS 2 lb. caddies Caddie 29c	Lindsay Ripe Olives Tall can 15c