

### BANDIT IN FILMS WHILE OFFICERS LOOKING FOR HIM

#### Companion of Man Lynched by Yreka Mob Year Ago Admits Helping Make Picture As Manhunt Went On

SACRAMENTO, Sept. 16.—(AP)—Robert Miller Barr, whose companion was lynched by a mob at Yreka a year ago for the killing of two peace officers, has more bravado than even a bandit needs, Sheriff Chandler said today.

While the manhunt was still at its height, Barr was earning money as an extra in the motion picture.



Robert Miller Barr.

Rose Marie, while it was being filmed at Lake Tahoe, the sheriff said.

Returning from Polson, where he placed Barr in safe-keeping due to rumors of another lynching in Siskiyou county, Sheriff Chandler aired his chagrin over the revelations made to him by his prisoner.

"With all the forces of the law looking for that bozo," he said, "what do you think he was doing? Working in pictures, he told me. He appears in eight scenes in the film. The supreme insult is he was on the payroll under the name of Robert Miller. I asked him why he used that name as we were looking for him under that, too, for another crime.

"He said, 'Did I use that name before? Well, I forgot.'"

After leaving Siskiyou county hurriedly, Barr said, he visited Portland, Klamath Falls and other Oregon towns, but he didn't succeed in eluding the posse until he had hidden in brush and behind rocks for nine days without food. All this time he was suffering from a flesh wound in the hip.

### SHANGLE WINNER AT OREGON FAIR

Verne Shangle was formally notified today of his winning two first and several second prizes and honorable mentions in the photographic division of the annual state fair that ended at Salem Monday.

He won first awards in the men's and ladies' divisions of photographic art with his studio portraits of Amos Burg, member of the National Geographic staff, photographed here two years ago, and of Claudia Ann Mitchell, small daughter of the late H. G. Mitchell and Mrs. Mitchell, who is now residing in Boise, Idaho. Mr. Mitchell, who died recently, was superintendent of the Pacific States Mines, Inc., and the family resided in Jacksonville.

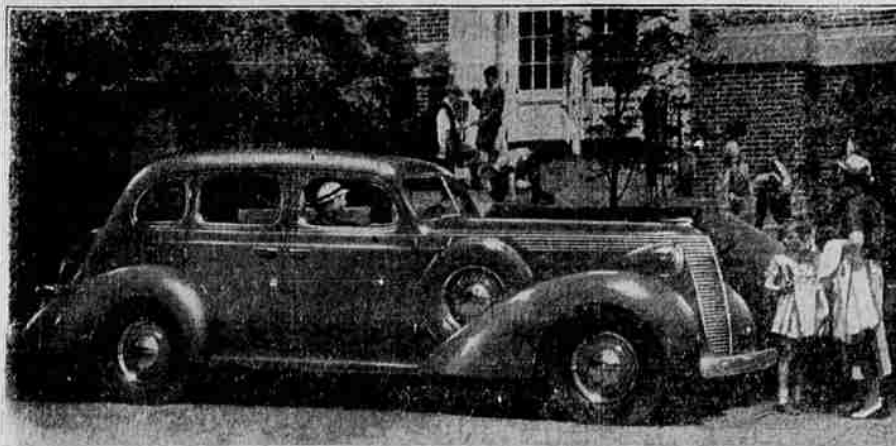
For a character study of Dr. LeRoy C. Jensen, Mr. Shangle won a second prize. He was awarded honorable mention for his portraits of Judge Will G. Steele and Jackie Lee Moad, son of Mr. and Mrs. Jack Moad.

### \$31,250 TAX PAID COUNTY BY COPCO

The third quarterly tax payment of \$31,250.88 was made by The California Oregon Power company to the county sheriff's office Tuesday. This

PERL  
Funeral Home  
John A. & Frank Perl  
Ambulance Service  
Phone 47

### Sanderson Showing 1937 Studebaker Models



The Studebaker for 1937 made its debut yesterday at the showrooms of Sanderson Motor company on South Riverside avenue in this city and a display of the smart new models will be featured all this week.

These new cars come to the public with many improvements and advancements over the Studebakers of 1936. No radical changes will be discovered, but there are many innovations and features that contribute to greater beauty, safety, economy and performance than any previous Studebaker has possessed.

Perhaps the most interesting of all is the President's new overdrive transmission and the fact that it is automatically selective. It may be cut in or out at any speed above 35 miles per hour. To cut in the overdrive the foot is lifted quickly from the accelerator and then applied gradually. To cut it out the foot is lifted and then applied quickly. The unit is compact, light and quiet and by affording immediate access to direct

drive provides the flashing acceleration of conventional gear—in either top gear or second—whenever needed.

Studebaker's mechanical features include understated rear axle, providing roomy interiors; new, double drop frame; improved steering gear; current and voltage regular on President models; Fram oil cleaner and overdrive; automatic "hill holder"; roomier bodies with increased luggage capacity compartments and built-in warm air and windshield defroster.

The entire body shells of the new 1937 Studebaker models are made of steel-top, sides, ends and floors—entirely free from wooden members. As in previous Studebakers the one-piece steel top is made from the largest single steel stamping known to the industry, skillfully insulated against noise and rattles, creating the safe "Box of Steel" for which Studebaker is widely known.

Interiors all reflect the genius of Miss Helen Dryden, famous New York

designer, whose work proved so effective in the 1936 President models. Miss Dryden's flair for interior decorating may be noticed in the blue-gray upholstery of the tan and dark-colored cars and a taupe fabric in the light-colored cars. Seats of the new models are broad, wide and deep. Window garnish moldings match the instrument panels. Chromium plated hardware adds distinction. Steering wheel, horn button and gear shift knob match the instrument panel and glove compartment door. Instrument dials have been designed in the modern manner and permit quick reading in daylight or darkness, with visibility aided by three-spoke steering wheels. Radio and clock units, when installed, blend harmoniously with the instrument motifs. The ash tray recesses into the dash panel as an integral part of the design, located below the radio control panel. Instruments and equipment include all standard aids and devices for making motoring simpler, more comfortable, safer and more enjoyable.

Strike Delays Launching. NEW YORK, Sept. 16.—(AP)—Launching of the U. S. navy destroyer "Fanning" was postponed today because of a strike called by the Industrial Union of Marine and Shipbuilding Workers of America at the Staten Island plant of the United Shipyards, Inc.

Approve Corn Seed Loan. WASHINGTON, Sept. 16.—(AP)—The agricultural adjustment administration announced today that Secretary Wallace had approved a \$10,000,000 corn seed loan program to assure supplies for next spring in the drought areas.

### FIRST OF FORUMS TO BE CONDUCTED BY CENTRAL POINT

Central Point will be the southern Oregon community to conduct the first of a series of inter-city luncheon forums to be sponsored by the Jackson County Chamber of Commerce, it was announced today by Olen Arnsperger, chamber president. The first forum will be held at noon on Friday, October 9, in the Hotel Medford, Mr. Arnsperger said. The forums will be held monthly thereafter.

A. H. Banwell, chamber manager, went to Central Point yesterday and interviewed Floyd E. Ross, acting mayor, Guy Tex, city recorder, and A. E. Powell, publisher, and they agreed to have a committee appointed immediately to prepare a program.

While no definite program has been adopted yet, it is expected that the Central Point forum will embrace three short talks, one on what the city has accomplished in community development, one on its resources and one on what it would like to accomplish with the cooperation of the Jackson County Chamber of Commerce, Mr. Arnsperger said.

The chamber, Mr. Arnsperger stated, will ask each Medford merchant to invite at least one of its Central Point customers to the forum.

The luncheon forums are to be arranged by the chamber's inter-city visitation committee, and Dwight Houghton, committee chairman, will be toastmaster at each monthly event, Mr. Arnsperger related.

### At the first SNIFFLE...

Quick!—the unique aid for preventing colds. Especially designed for nose and upper throat, where most colds start.

**VICKS VA-TRO-NOL**  
30c double quantity 50c



HIRAM WALKER'S FIVE O'CLOCK COCKTAIL GIN DISTILLED 85 PROOF

FIFTH 90c Code No. 514-B  
PINT 55c Code No. 514-C  
Hiram Walker PEORIA, ILLINOIS

### BABSON DESCRIBES BUSINESS NORMAL. IS NOW 'BULLISH'

#### Chart Student Voices Good Tidings for Next 2 or 3 Years—Forecasts Sharp Advances, Raps President

BOSTON, Sept. 16.—(AP)—Roger W. Babson said today business after six years of depression, has at least reached normal and that "for the next two or three years I am bullish on everything except Democracy."

"Of course I am bullish on Democracy for the long pull," the business statistician told the Advertising club of Boston. "Democracy will be the ultimate form of the government. But today, due to unprincipled and selfish politicians, Democracy has collapsed throughout pretty much of the entire world. Only a spiritual revival can prevent such a collapse in America."

For the fourth time since he began studying business curves 35 years ago, Babson said it had crossed the normal line and is back again to the average of 1925, '26 and '27. See 1936 Best Year.

"If the heavy industries and general building construction were active, business would be far above the

normal line, approaching 1929 highs," he said.

He said 1936 will be the best since 1929 for automobiles and steel and among lines equalling or exceeding 1929 peaks he cited retail trade, power production, cement and electrical appliances.

He predicted a sharp advance in the price of real estate, commodities and stocks, wages and interest rates, larger farm crops and a rise in railroad traffic.

Raps Roosevelt.

He said the only shortage will be in the "guts" crop and "the fundamental characteristics of integrity, industry and thrift which have made America."

"Apparently there will be a shortage in these crops for sometime because Dr. Roosevelt has so doped the American people during the past few years that we have not learned the lessons which a depression usually teaches."

He attacked the federal tax on undistributed earnings, enacted by the last congress, and told his audience not to worry about unemployment, droughts and the condition of the farmer.

Boosts Stocks.

He expressed optimism over the future of stocks which will profit from the coming recovery in the heavy industries, but said "the bond market is today where the stock market was in 1929 when you lost your shirt."

"I believe that bankers and trustees who are now buying callable, non-convertible, low rate 20-year bonds for their institutions are making a great mistake," he added. "They are now speculating in bonds just as they speculated in stocks during the last boom."

On Business Mission—Glenn W. Potts, state agent for Gould & Gould.

General insurance agency of Portland transacted business here today. He arrived last night by motorcar from Klamath Falls and was to continue from here back to his upstate headquarters.

Hiram Walker's Controlled Condensation process keeps nearly a dozen gin ingredients under careful control, insures perfectly balanced gin flavor.

EVER SEE SUCH BALANCE?

Fifth \$1.05 Code No. 514-B  
Pint 70c Code No. 514-C

Hiram Walker's DISTILLED LONDON DRY GIN  
HIRAM WALKER & SONS, INC., PEORIA, ILLINOIS

## Wards Say It With Savings! Buy In Our SEPTEMBER SALES

Airmail's **Movie dial** Pat. Applied for  
**7395** \$7 DOWN  
11-TUBE A. C. CONSOLE RADIO

This great new dial eliminates squinting or stooping. Tune by letter. Cathode ray eye, metal tubes. Other Airmail Radios as low as \$11.98

**Our Finest**  
Largest Size Washer  
**8795** \$3 DOWN  
Delivers 111

Small Carrying Charge

Wards Supreme has every convenience and quality feature! Lovell's finest wringer! Fingertip controls, double-wall tub! A \$100 value! See it!

**"B"-BATTERYLESS**  
**6995**

Use this 7-TUBE console with Gasoline Engine Charger. Movie Dial illuminates! 2-speed tuner. Alloy dynamic speaker. Automatic volume control. 2 wave bands.

**Famous Damascus Electric Portable**  
**4995**

Only \$3 DOWN! Carrying Charge

Our finest sewing head in a portable Walnut-veneered case! True rotary action! Built-in light and motor! Automatic thread tension, foot control, attachments!

**Price Drastically Cut!**  
**Studio Divan**  
**2788**

Reduced for this event only! Water-repellent, "Ev-R-Dri" processed modern tapestry upholstery! 40 coil base and 114 coil top inner spring pad! Deep layers of fluffy felted cotton! Sisal pads.  
\$3 DOWN, \$5 Monthly, Small Carrying Charge

**880 Living Room**  
2-Pc. Mohair **7495**

You not only save \$15—you get 100% Angora mohair PLUS a 1-year mothproof insurance policy! Extra large 80 inch davenport!

**\$29.95 Innerspring Mattress**  
**1995**

When these are gone we don't know when we'll be able to give you value like this again! Long-wearing rayon damask tick! Roll Imperial edge! 306 deep, cushiony coils! Screened wire ventilators!  
\$3 DOWN, \$4 Monthly, Small Carrying Charge

**Price Cut \$15!**  
2-Pc. Modern **6495**

The NEWEST yet Wards have drastically cut the usual price! Extra large! New carved arm panels! Combination tapestry upholstered!

**ANOTHER BIG PICNIC**  
For Elks And Their Friends  
**Elks Picnic Grounds**  
ON ROGUE RIVER  
**THURSDAY 17**  
NIGHT - SEPT.

**BARBECUE! FREE BEER!**  
**GIANT BONFIRE • DINNER 6:30 P.M.**  
**2-30 MINUTE WRESTLING MATCHES**  
**15 ROUNDS BOXING** Featuring the Pick of the CCC Fighting Talent!

Band Concert — Plenty of Fun for Everyone  
EVERYTHING for Only ONE DOLLAR

## Montgomery Ward

117 SO. CENTRAL TELEPHONE 286