

# AUTOMOTIVE NEWS

## MODEL OF MODERN AUTO PLANT SOON ON DISPLAY HERE

A \$20,000 working model of the world's most modern auto plant will be brought to Medford for an evening special display. It was announced here today by the Plymouth dealers in this territory, Pierce Allen Motor Co and Lange Motor Car Co.

Arrangements have been completed with Plymouth officials in Detroit to send here the company's big mechanical model of its main production plant, so that hundreds of local residents may see in miniature the latest methods of construction employed at the world's most modern automobile factory.

The display is mounted in a special trailer more than 25 feet long, with self-contained equipment for operating the miniature factory. The exhibit is scheduled to arrive here on Saturday, September 5, at 3 p.m. and will be placed on display immediately at a vacant lot west of the Western Union Telegraph office on West Main street.

Factory experts will accompany the unit, and deliver explanatory lectures during each demonstration. Special motion picture features will be shown in connection with the display.

The miniature plant is an exact scale replica of the giant Plymouth main plant, and is said to be one of the most elaborate mechanical models ever constructed. An intricate system of electric motors shows the factory running at full blast, with tiny figures of workmen going through the motions of regular production on the assembly lines. Cars "produced" in the plant are two and one-half inches long.

## JOBS OPEN FOR TOMATO PEELERS

Approximately 2200 are employed in picking hops in Jackson and Josephine counties, according to Lewis Ulrich, manager of the Federal Employment office here, in his weekend summary of labor conditions in the two counties. The hops are in good condition this year and pickers are making good wages, the summary states. No more pickers are needed at this time.

Twenty additional women can find employment peeling tomatoes at the Bagley Canning company's plant in Ashland, Mr. Ulrich states. They will be paid at the rate of seven cents per peal and can total \$2.50 to \$3.50 daily earnings.

Pear picking is progressing smoothly, the labor summary says, with sufficient labor engaged or available to complete the harvest in good shape. Satisfactory wages are also reported in this line of work.

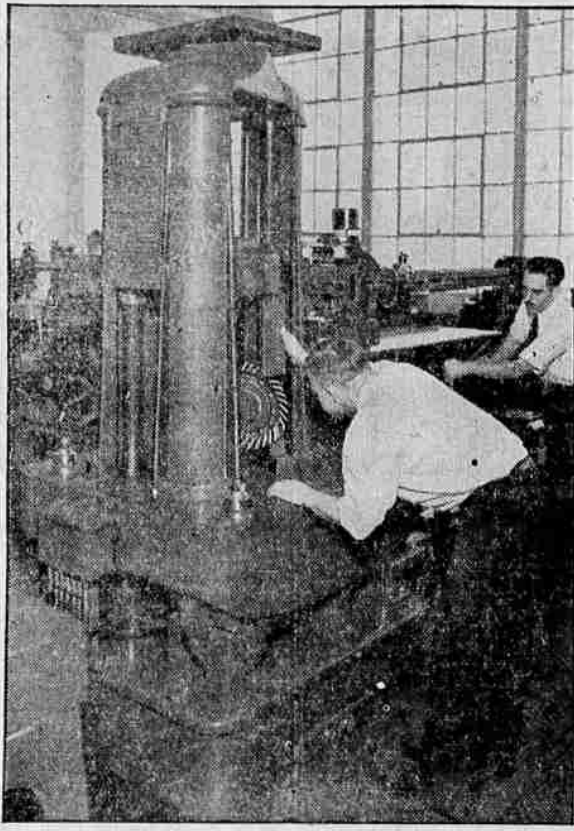
There is no shortage of labor in any of the industries of the two counties, the report asserts.

Employers and employees may secure the benefits of the free Federal Employment office by calling at the city hall.

"Gone With the Wind" by Margaret Mitchell, is rated the fastest selling novel since the war.

In Australia, amateur athletes are not allowed to take instructions from professionals.

## Ford Destroys to Build Better



DESTRUCTION is developed to a fine art by the Ford Motor Company with this compression machine. The best way to find out the ultimate strength of a part is to destroy it, and the photograph shows pressure being applied to a tooth of a Ford V-8 helical ring gear (that's the main gear in the rear axle) until the tooth breaks. The machine shows just how much pressure was required to

break it. This test is applied to gears and other parts taken from production every so often to make sure they are coming through true to specification and to obtain data for the manufacture of still better Ford V-8 parts. The machine is the most powerful compression instrument in the new chemical and metallurgical laboratory at the Ford Rouge plant. It has a capacity of 200,000 pounds per square inch.

## Punishment Given Cars On Vacation Trips Says Furnas

"Many motorists are returning to the city from their vacations after subjecting their cars to thousands of miles of hard driving," said C. C. Furnas, Goodyear dealer, located at Main and Riverside. "We often don't realize just what punishment we have given our cars on these vacation trips."

"The first step a returning motorist should take is to have his car completely checked to render it safe for busy city driving," he continued. "Not only should the motor and body be thoroughly overhauled, but the tires should be given a complete inspection."

Many vacationists, he explained, started on their trips with tires in only fairly good condition. Miles of driving on hard-surface highways as well as the wear and tear of rocky country roads have brought these tires down to their last shred of usefulness.

"All too many of us think that because we're only driving around the town it is useless to replace these unsafe tires," he said. "That is where many motorists err and a big reason why safety campaigns are not more successful. Nothing endangers life

more than a smooth-worn tire that is apt to send the car skidding into a tragic spin; or a weak tire that may blow out suddenly sending the car careening into a crowded district."

"A wise motorist, returning from his vacation, will make whatever replacements need be and will see that his tires are strong enough to see his family through a safe fall and winter season."

## LINE OF PHILCOS ADDED BY PRUITT

Pruitt Melody Shop has added Philco radios to their increasingly large stock of musical instruments and equipment and a number of the new 1937 models featuring automatic tuning plus the Philco foreign tuning system are being introduced to their southern Oregon patrons.

On the tuning dial of the new Philco radios are the names of London, Paris, Berlin, Rome, Japan, each with a corresponding color line beneath to show exactly where to tune for these stations. This innovation is not restricted to a few high-priced models but is included as an integral part of every American and foreign Philco. Almus Pruitt pointed out in discussing these distinctive radios.

Instead of tuning various stations by numbers, call letters are used in playing Philco de luxe models. This automatic method of tuning operates similarly to a dial telephone. Philco magnetic tuning gives the exact frequency of the stand and holds the receiver precisely on the carrier wave. An automatic silencer suppresses sounds from the stations passed by when dialing the automatic tuner from one station to another. Philcos for 1937 are characterized by streamlined beauty of design.

One of the newest developments in radios is the end table Zephyr Zenith model which is attracting considerable attention from visitors to Pruitt Melody Shop. The "lazy man" radio is made in sizes suitable for use at the side of easy chairs, day beds and davenport. There is a plate glass cylinder which fits over the face of the radio transforming it into a table top. A magazine rack is also fashioned in one end of the radio.

The German Republic was formally established at Weimar on August 11, 1919.

Use Mail Tribune want ads

### SPRINGS

BUILT OR REPAIRED ANY TYPE CARS OR TRUCKS

### MERRIMAN SHOP, INC.

29 So. Riverside, Phone 210

IF IT'S METAL Think of Merriman's

## MARKET EXPANDS FOR BETTER CARS

FLINT, Mich., Aug. 29.—Unusual expansion in the market for medium and upper medium priced automobiles was cited today by W. F. Hufstader, general sales manager of the Buick Motor company, as confirmation of the upward trend in buying habits and an indication of the return of purchasing power to the nation.

At the same time, the executive commented on the large share of that increase obtained by the Buick Motor company, the sales of Buick automobiles having accounted for more than one-fourth of the entire gain in registrations of all new cars priced above \$700.

"According to latest available registration statistics, covering the first six months of the year, there has been a gain in 1936 over 1935 of 45.1 percent in the sales of cars in the price groups referred to," Mr. Hufstader said. "As against this price class increase, Buick sales have shown a gain of approximately 140 percent. Of a net gain of 19,100 units reported for the price groups as a whole, which include 18 makes of automobiles, Buick accounted for 47,000, or 26.1 percent."

Sales of Buick cars are running in unusually heavy volume during the summer months, Mr. Hufstader said, deliveries during July having been the largest experienced by the company during this month in seven years. During the month, a total of 14,724 new cars were delivered at retail to customers in the United States as compared with 16,354 in June and 6,002 in July a year ago. This was a decline of approximately 10 percent from June, less than the average drop for this season, and a gain of 145 percent over July, 1935.

## TROTSKY'S EXILE PUZZLES NORWAY

OSLO, Norway, Aug. 29.—(AP)—Norway studied with grave concern tonight what to do with Leon Trotsky, the exiled bolshevik "man without a country."

Threats from the Soviet government that Trotsky's continued residence in Norway might endanger friendly relations between the two countries spurred Premier Johan Nygaardsvold to urgent consideration of the problem.

The warning from Moscow, containing a note demanding expulsion from Norway of the one-time soviet commissar of war, upset an earlier plan to send him to the "Norwegian Siberia." The historic fortress Nakhon on a tiny island off Trodheia, in the north Atlantic, had been mentioned as a suitable desire to harbor the exile and authorities here said they were convinced none was likely to invite him—with the possible exception of Russia.

## Sanderson Depart For Studebaker Meet

B. L. Sanderson, president of the motor company of the same name, accompanied by Mrs. Sanderson, will leave today for Portland to attend a sales meeting of northwest Studebaker dealers and to pick up a new 1937 Studebaker Dictator sedan which will be shown here the middle of the week.

"From all reports," Sanderson said, "the new Studebakers will be as far advanced over 1936 models as the '38 cars were over preceding models." Mr. and Mrs. Sanderson will drive the new car to this city, and it will be on display at the company's showrooms Thursday or Friday.

Use Mail Tribune want ads

## Hotel Canterbury

● SAN FRANCISCO'S distinctive downtown hotel where elegance combines with economy. Rooms are comfortably furnished, all with bath and shower. Convenient to shopping district and theatres. Excellent meals at moderate cost.

The only downtown hotel with a beautiful private garden.

\$2.50 One Person \$3.50 Two Persons \$4.00 Twin Beds

FREE GARAGE TO TRANSIENT GUESTS

750 SUTTER STREET

Between Taylor and Jones

Geo. T. Thompson, Manager

## Greyhound, Yellow Cab Firms Choose Firestone's Tires

Firestone tires during the past year have set a record for performance and duty that is remarkable, says Ed Efteland, manager of the Firestone Auto Supply and Service store located at Ninth and Riverside. He quotes Thomas B. Hogan, president of the Yellow Cab company of Chicago, world's largest cab fleet—"We use Firestone gum dipped tires on our entire fleet of yellow cabs to protect our 20,000,000 passengers against the dangers of blowouts and skidding and because of their dependability and economy." Efteland stated that the Firestone gum dipping process, a result of years of testing and research by Firestone engineers, has given the public a tire that gives greater blowout protection because they run up to 28 degrees cooler. This gives protection against internal heat and friction.

Another great tribute to Firestone tires, says Efteland, is the statement of C. E. Wickman, president of the Greyhound corporation, who says "To insure safety, comfort and on time schedules for our 30,000,000 passengers, Firestone gum dipped tires are used on Greyhound buses."

## Motor Car Luxury Offered By Super Nash Ambassador

Mr. and Mrs. Virgil B. Hawley owners of the Hawley Transfer, have taken delivery of a new Nash Ambassador Super 8 sedan, the most completely equipped car on the American market, according to an announcement Saturday by Walter W. Abbey, local Nash and LaFayette dealer.

Mr. Abbey says: "The Nash Ambassador Super 8 is luxury, expressed in its most glowing terms. It has everything ever hoped for in a superlative fine automobile. The luxury in appointments of the interior invites relaxation."

## Goodrich Roundup Bringing In Many Dangerous Tires

The Goodrich Roundup campaign is bringing in a large number of unsafe tires to the Lewis Super Service Station, local Goodrich dealer, according to W. L. Lewis.

Mr. Lewis says: "Our tow car often brings in wrecks resulting from high speeds and worn tires. In this campaign we are making it easy to get the protection offered by the Silver-town life-saver golden ply."

"Everyone, whether he's rich or whether he's poor, whether his car is entirely paid for or not," says J. A. Anstey, budget manager for Lewis Super Service, "can enjoy the safety of Goodrich Silver-towns."

Use Mail Tribune want ads

## JALI SUCCEEDS ELLIS AS HEAD GILMORE STAFF

Announcement was made yesterday by officials of the Gilmore Oil company that C. W. Ellis, district manager with headquarters in this city, has been assigned to another important position in the Gilmore organization. Simultaneous with the announcement, it was made public that George Jali, veteran in the petroleum industry and a member of the Portland Gilmore staff has been assigned to the Medford area as district manager. Mr. Jali arrived here yesterday to assume his duties, and with Mrs. Jali will establish residence here. Jali has been connected with the oil business for nearly 17 years and is well qualified to follow Ellis in the important Medford post.

C. W. Ellis, familiarly known throughout southern Oregon as "Chuck", has made an outstanding record for his company while manager of the district here. He has been prominent in civic and fraternal affairs of this city and his many friends are gratified at the progress he is making with the Gilmore Oil company, although they regret the fact that he must leave Medford. Mr. and Mrs. Ellis have been prominent socially during the past four years in this community. They will leave later this week after Mr. Ellis has turned over the affairs of the Medford district to his successor.

## HUSBAND BLAMED BY WIFE'S KIN IN DOUBLE SUICIDE

LOS ANGELES, Aug. 29.—(AP)—A letter which came too late for authorities to act placed the blame today for the suicides of Mr. and Mrs. Dursand V. Clevenger upon the shoulders of the husband.

The young couple—he was 28 years of age and she 30—were found yesterday, dressed in their best clothes and their arms clasped about each other in death. They had breathed poisonous fumes generated by a chemical acid.

Sheriff's deputy Ira Taylor disclosed he received a letter shortly after the bodies were found from Mrs. W. O. Spicer, of Kansas City, Mo., mother of Mrs. Clevenger, in which she asked the officer's aid to save her daughter from "the terrible influence" which she believed the husband exerted over her.

"You know, he does not believe in God," read Mrs. Spicer's letter, asking Taylor to do what he could to prevent Clevenger from persuading her daughter to join him in a suicide pact.

Loss of Clevenger's job as a bookkeeper in a wholesale grocery house was given in a note as the cause of the double suicide.

At Kansas City, Mrs. Clevenger's

## EAGLES IN DRIVE NEW MEMBERS

With more than 200 in attendance Medford aerie of the Fraternal Order of Eagles held one of the largest meetings of the year Friday night to mark the opening of a membership campaign.

Proceeding the meeting a parade was held through the principal streets of the city with the Klamath Falls aerie and auxiliary drum corps providing martial rhythm. The women drummers were loudly applauded along the line of march for their smart appearance. The local aerie and auxiliary

uniformed drill teams added a colorful touch to the procession.

After a brief business meeting by the aerie and auxiliary in West Main street lodge hall, a dance was held. Dynga's orchestra providing the music. A Dutch lunch was served during the evening.

Sixty new members were signed and will be initiated in the near future. It was announced yesterday by George Tucker, aerie president, Mr. Tucker said it was expected that several hundred new members would be added to the rolls during the campaign. Members, he said, would be glad to give lodge information to anyone interested in joining.

Closing time for Too Late to Classify Ads is 1:30 p.m.

### SCREEN DOORS WINDOW SCREENS

Made Right—Priced Right

Trowbridge Cabinet Wks.

## For long hard mileage and economy spread over the years

International sizes range from Light-Delivery to powerful Dump and Tractor Trucks, starting with 4-ton cylinder chassis at \$400 f.o.b. factory

## WALTER W. ABBEY, Inc.

Nash, LaFayette, International Sales and Service

133 S. Riverside, Telephone 303

### INTERNATIONAL TRUCKS

A short try-it-on-the-job demonstration cannot tell you what you're going to find out after long mileage. Brilliant performance is common enough in most new trucks, but not all trucks can continue to give you trouble-free low-cost service for long.

The greater part of a truck's economy is in lasting stamina—a steady procession of ton-miles over a period of years. That is being proved by thousands upon thousands of International owners.

Put your faith in International's 30-year reputation for quality. Solve your hauling problem through International ownership, and turn your mind to other problems. Come in and let us show you what we mean.

## Goodrich Third Annual Round-up of UNSAFE TIRES!

Now is the time to replace worn-out or inferior quality tires with famous Goodrich Safety Silver-towns. Don't wait until you have a blow-out to switch to Silver-towns. Act now—during our nation-wide campaign against unsafe tires.

### EASIEST CREDIT IN TOWN!

## NO MONEY DOWN

Make Your Own Easy Terms WANTED—1000 WORN TIRES

## Lewis Super Service Station

8th AND FRONT PHONE 1300. WE NEVER CLOSE

HEAT CAUSES BLOW-OUTS THIS LIFE-SAVING GOLDEN PLY RESISTS HEAT Prevents these Blow-outs

## GOOD NEWS FOR MOTORISTS!

We Are Glad To Announce The Addition To Our Staff Of—

### "CHAT" EIDE

formerly Associated with L. C. Grimes of Central Point Mr. Eide is a recognized expert in Automobiles, Electrical and Ignition Work... Let him solve YOUR problems along this line.

### Firesone Auto Supply & Service Stores

Ninth and Riverside, Ed Efteland, Manager, Phone 520

## HOTEL MANX

New in dress, beautifully finished rooms, with colored tiled baths and showers, located on San Francisco's famous Powell Street opposite Union Square - Restaurant - Coffee Shop - Cocktail Room - Circulating Ice-Water.

RATES: 1.50 - 2.00 - 2.50 - 3.00 SINGLE 12.50 - 1.00 - 1.50 - 4.00 DOUBLE

GARAGE SERVICE AT ENTRANCE

POWELL AT O'FARRELL STREET - SAN FRANCISCO

HARVEY M. TOY, MANAGING OWNER

"MEET ME AT THE MANX"