

STREAM OF PEARS HURRIES THROUGH MODERN MACHINES

(Continued from Page Five)

carried out on a generous scale, Leverette declared.

Leonard Halfhill is superintendent of farms for the corporation, and Roy Tomkins, Barney Klukert, Ray Barnsworth and E. J. Bourdman will be foremen. Ross Klins, long associated with packing house activities in the valley, has been named packing house superintendent, with Leo Butry packing foreman. Mrs. R. E. Stearns will be secretary in charge of the office.

The plant is considered one of the most modern in the valley, and due to its efficiency is expected to produce a large tonnage of packed fruit for its site.

A year ago Leverette, with the purchase of the Orchard Park ranch, began an improvement program that he hopes will add impetus to the fruit industry here. "The packing house is the first move, and it gives me real satisfaction to see plans shaping so well," Leverette stated.

VOLUNTEERS TEST POISONED PASTRY

BIRMINGHAM, Ala. (UP)—The story is being told here of the courageous professional fidelity of five employees of the city laboratory who submitted to infection as "human guinea pigs."

The five deliberately drank germladen broth to discover the source of the infection which caused 94 children to become ill after eating pastry.

Two of the five were found to be susceptible to the germs and became ill.

"The term 'human guinea pig' is really a misnomer," said Dr. George A. Denison, director of the laboratories. "Only monkeys and human beings were suitable for this particular experiment and since monkeys were not available, volunteers from the laboratory personnel were called for."

"Direct examination of the filling in 19 pastry units we recovered from the lot which made the children ill showed large numbers of Staphylococci. This type of bacteria has never been known to cause death, although it does result in serious illness," Dr. Denison said.

"Not all people are susceptible to this type of bacteria. Ninety-four of the 165 who ate the pastry were made sick. The other 71 were not affected."

Buckingham's Ice Cream, Candy & Party Specials, The Great, 230 S. Cent

Many Hands Required in Orchards



Many persons are employed in the 17 orchards of the Orchard Park Farms, Inc. Upper scene above: The tree branches are carefully pruned to permit all fruit to receive a maximum of sunshine and equal distribution of sap from the trunk. Spraying also requires the services of many helpers. Below: The orchards present a busy scene during picking season.

STONES OF OLD HOTEL USED IN APARTMENT

STONE CITY, Ia. (UP)—Columbia Hall, for nearly half a century a landmark here, is being torn down and hauled to Cedar Rapids where its half-million tons of stone will be used in construction of a new apartment house.

The massive old building, constructed in 1893 as a hotel and theater, has resounded the voice of Jenny Lind and once sheltered Gen. Tom Thumb in the days of its early history. More recently it has offered entertainment facilities for Grant Wood's art colony and provided atmosphere for ghost stories.

A better job at a saving. Free! Garage, 801 N. Central.

LARGEST LOCOMOTIVE COMPLETED IN CANADA

MONTREAL (UP)—The world's largest streamlined steam locomotive, 94-feet long, weighing 850,000 pounds, and capable of attaining a speed of 100 miles an hour, has been completed here.

The engine is one of four being constructed for the Canadian National Railway, and will be the first "streamliner" placed in operation in Canada. It is known as the No. 6400. The design follows a streamlining plan developed by the National Research Council at Ottawa and the motive department of the C. N. R. It was selected after an exhaustive series of wind-tunnel and other tests.

Use Mail Tribune want ads.

PLUMBING

for the ORCHARD PARK FARMS
WAREHOUSE, Was Handled By
Wm. Swartz
PLUMBING and HEATING
CONTRACTOR

CONGRATULATIONS—
Mr. Walter Leverette, upon the opening of the new, modern ORCHARD PARK FARM fruit packing plant.
WILLIAM SWARTZ
PHONE 512-W
40 Berkeley Way

SERVING Southern Oregon's FRUIT INDUSTRY

Congratulations

Mr. Walter Leverette upon the completion of the new fruit packing plant of ORCHARD PARK FARMS, INC. . . . Equipped with the latest facilities for washing, grading and packing fancy fruit, this plant is a splendid addition to the many fine packing houses playing important roles in Rogue River Valley's growing fruit industry.

Eugene Thorndike, Manager
Oris Crawford, Asst. Mgr.
A. R. Puchner, Asst. Mgr.

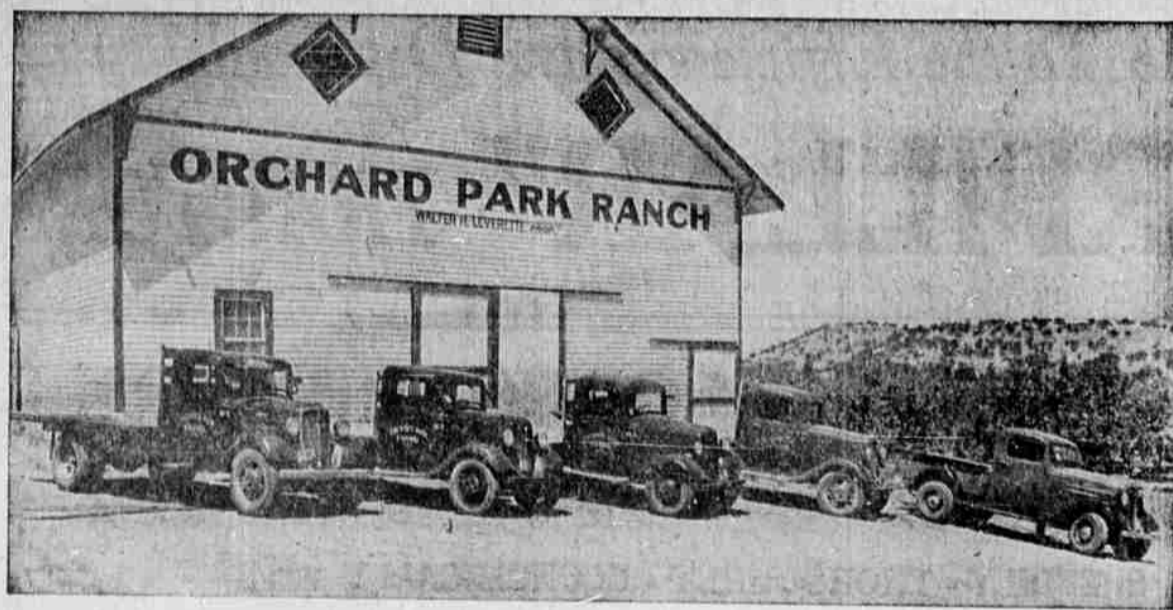
This Banking Institution —

Specializes in the Handling of
SIGHT DRAFTS
and
BILLS of LADING
OF FRUIT COLLECTIONS
Both Foreign And Domestic

MEDFORD BRANCH

The First National Bank

"The Oldest National Bank
West of the Rockies" of Portland, Oregon Member Federal Deposit
Insurance Corporation



Orchard Park Farms, Inc. Use CHEVROLET TRUCKS Exclusively

READ

Mr. Leverette's
Letter . . .

P. O. Box 1127 Cable Address "Sunsugared"

Orchard Park Farms, Inc.

Walter H. Leverette, President
Growers and Shippers
Sun Sugared Pears and Apples
Medford, Oregon.

August 15, 1936

Mr. C. M. Hurd,
Rogue River Chevrolet, Inc.,
Medford, Oregon.
Dear Mr. Hurd:

Thank you very much for taking care of the minor adjustment on our number 4 truck yesterday. We appreciate the splendid attention the Rogue River Chevrolet Co. is giving us on our 5 Chevrolet trucks. In every instance you have given us excellent service.

We are glad now that we have standardized on Chevrolet trucks because they are giving the finest possible service. Gas mileage is low, as well as oil consumption and as you already know, our repair bills during the past season have been extremely low.

Yours very truly,
ORCHARD PARK FARMS, INC.
By Walter H. Leverette.

WHL:DL
Agents—Thornton Prod. Co., Inc. 204 Franklin St., New York, City

CHEVROLET TRUCKS

Are Most Adaptable for Orchard and Farm Use Because
They Are Outstanding In PULLING POWER . . .

OPERATING ECONOMY - LOW PRICE!



Thoughtful buyers of trucks and commercial cars are displaying overwhelming preference for Chevrolets. . . . They are giving Chevrolet the greatest truck year in all Chevrolet history; and they are recommending Chevrolets to all their friends. . . . Because they know that Chevrolet trucks have the greatest pulling power in the entire low-price range. . . . because they know that Chevrolet trucks are the most economical for all-round duty. . . . and because they know that Chevrolet trucks are the only low-priced trucks with such advanced features as High-Compression Valve-in-Head Engine, New Perfected Hydraulic Brakes, Full-Floating Rear Axle on 1 1/4-ton models.

WE CONGRATULATE Mr. Walter Leverette upon the opening of the new fruit packing plant and other expansion of Orchard Park Farms, Inc. The outstanding success of these operations reflects Mr. Leverette's energy and enterprise!

ROGUE RIVER CHEVROLET, INC.

Office and Salesroom
Sparta Bldg.

CHEVROLET SALES AND SERVICE
PHONE 188

Shop and Service Dept.
32 N. Riverside

