

NEW PACKING PLANT OPENS HERE

Latest Equipment Is Featured In Plant Of Orchard Park Farms, Inc.

STREAM OF PEARS HURRIES THROUGH MODERN MACHINES

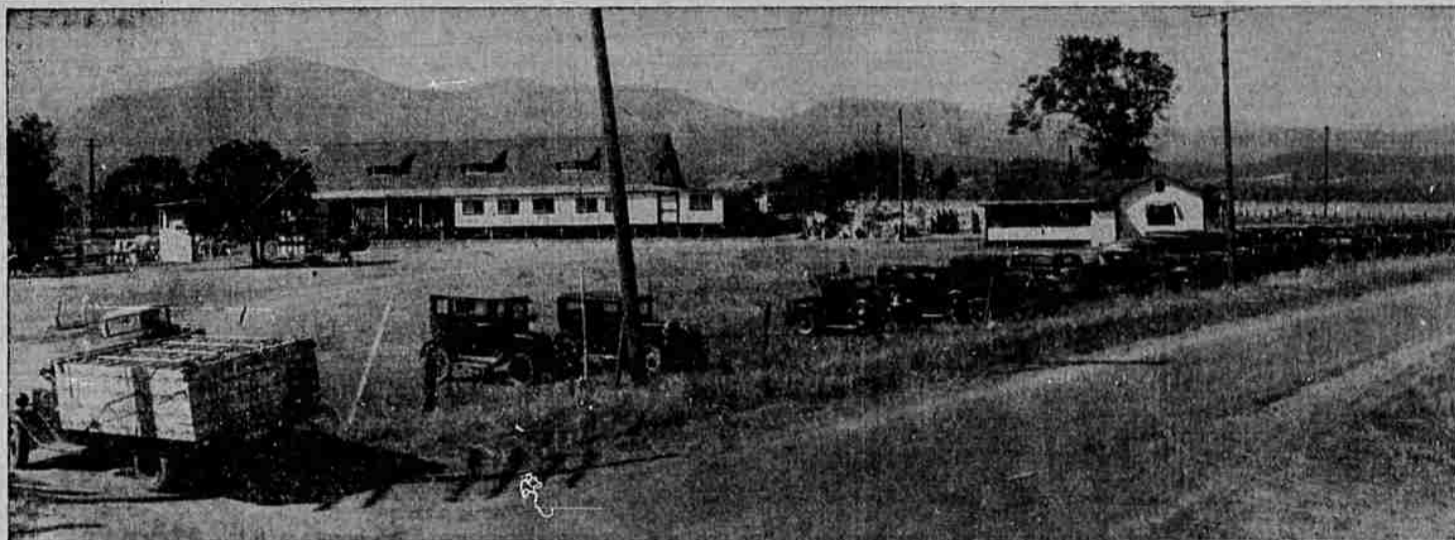
Orchard Park Farms, Inc., Turning Out 5500 to 6000 Packed Boxes Daily — Efficiency Is Watchword

Completed at a cost of \$25,000, the new packing plant of Orchard Park Farms, Inc., opened last week and is now running at full capacity on hurry-up orders of pear shipments. The plant, located near the Voorhies crossing three miles south of the city on the Pacific highway, is employing between 185 and 200 people, and is turning out between 5500 and 6000 packed boxes a day.

Walter H. Leverette, president of the company, stated yesterday that the big unit, running two graders, has functioned flawlessly since the day it was opened. Most of the plant is entirely new with the exception of the shell of the shed, which was built several years ago by Frank Wortman and later bought by L. A. Banks, although it had never before been used for fruit packing.

Modernism is the keynote of the unit, with the fruit brought directly onto the loading platform in the rear, in trucks. From there it is wheeled to the sorting belts and the washers, moving down the graders into the packing bins. New overhead trams carry the boxes directly to the

Modern Fruit Packing House Now in Operation at Voorhies Crossing Near Medford



The newly equipped and thoroughly modern packing plant of the Orchard Park Farms, Inc., is located on the Pacific highway a few miles south of Medford at Voorhies crossing. In the picture above is shown the packing house, with office building at right, and employees' automobiles and an incoming truckload of fruit in the foreground. In addition to being on the highway, the packing house is served by a spur track connecting with the main line of the Southern Pacific railroad.

packers, minimizing effort in getting the fruit packed.

Still running in a straight line down the center of the building, the packed fruit is weighed, lidded by an automatic liddler, and moved out the front door onto waiting trucks or cut the side door into refrigerator cars. The direct movement through the building, with conveyors and tramways substituted for hand trucking in every possible way, has given remarkable efficiency, Leverette said.

Fruit from 17 orchards. The new packing house will handle

the fruit from 17 orchards either owned or operated by Orchard Park Farms, Inc. Orchard Park ranch, with 160 acres, will be one of the largest producers, with the Royal Orchard tract, of 170 acres, also heavy. Other orchards either owned or operated by the corporation will be: Homecrest, Lone Oak, Mary Mac, Jake Brown, Roxy Ann, Crown Point, Royal, Myers Lane, and others. Leverette stated that some outside fruit will probably be packed.

All of the produce of the house will be marketed under the "Sun

Sugared" label. J. C. Barnes (who with his son Charles, owns the Sunny Slope orchard) and Leverette coined the catchy name last winter, and collaborated in having it copyrighted, not only for fresh fruit but for canned goods as well. The Sunny Slope pears will be packed at the new plant. Leverette stated that about fifty percent of the pears packed will be for the export market and shipped by Sam Birch Co., Inc., from Portland. The remainder, for domestic consumption, will be handled by the

Thurston Fruit company in New York City.

Improvements on the Orchard Park ranch were started last year when Leverette purchased the five-block tract from the Pepper and Taylor interests, who had bought it from L. A. Banks. The orchard house was remodeled and painted white, and the big barn near the Pacific highway was also painted white. An office building near the packing shed was remodeled, and painted in the corporation's colors, white with distinctive green trim.

To Be Show Place

An innovation in packing house design is found in the shock shed, in the rear of the main packing plant. This shed will house all box-making and labeling activities, and other projects usually confined to the shed proper. Finished boxes will be carried by trams into the main building. With the intention of making a show place of the ranch, the grounds will be terraced, grass will be planted, and landscaping will be

Continued on Page Eight.

CUTLER EQUIPMENT IN NEW WAREHOUSE FOR PREPARATION OF FRUIT

Cutler equipment installed in the new warehouse of Orchard Park Farms, Inc., under the direction of Hubbard-Wray company includes: Cutler improved fruit washers and graders, Cutler rotary bin graders and Cutler wave-motion sorting tables. These modern facilities were selected by Walter Leverette in order that his plant would operate with maximum efficiency and economy.

Paxton automatic nailing machines and lidding and box-making equipment will increase the general output of fruit at the warehouse, said Mr. Leverette. The Cutler washer and graders are constructed without screens or jets. Fruit is sent through the necessary acid, washed in fresh water and dried with an effective absorbent towel drier unit in readiness for the final pack.

Cutler graders enable the average packer to increase his usual output as much as 15 per cent. M. T. Wray stated in discussing the packing plant furnishings.

Packers prefer the bin graders because they do not have to stop to pull down the fruit and they pack more boxes daily with less fatigue. These machines handle the tenderest varieties of apples and pears without injury and are one of the finest improvements made in packing house equipment in a number of years, Mr. Wray said.

Actor Raymond Walburn was one of the first American soldiers to reach France during the World War. He served four years with the American infantry, was wounded twice.

Use Mail Tribune want ads.

AIR COOLED TROUSERS MAKE HIT WITH MALES; WOOL INDUSTRY AIDED

NEW YORK, Aug. 19.—(AP)—Men's new found fondness for "air-cooled" trousers is helping to keep the wool industry out of its usual summer doldrums.

A national telegraphic survey by the Associated Woolen Industries, trade organization, revealed average sales of tropical weight worsted suits are running 80 per cent ahead of last year.

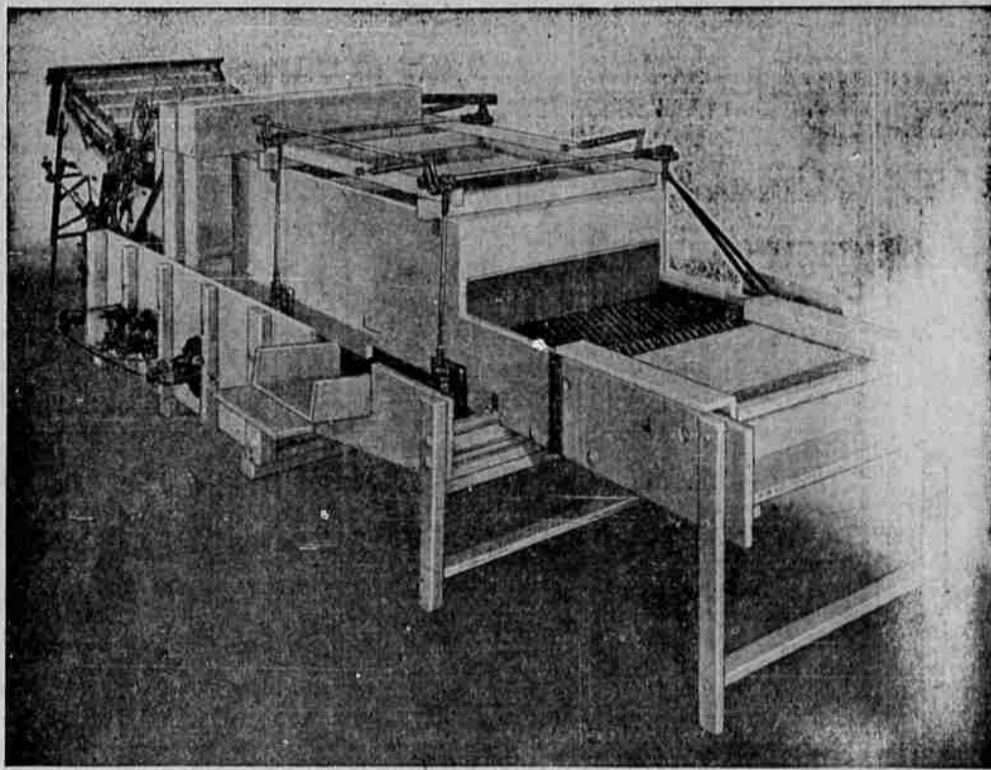
F. B. Todd, director of the industry, said "the wool industry was one of the first to herald the approach of better times. Merchandisers this year are finding ready sales for woolen products because of the wide diversity of appeal ranging from evening gowns to red flannels."

Clothing takes by far the largest amount of wool produced, consuming \$1,500,000,000 of the raw product last year, and its retail volume is watched closely by the industry as a gauge of future business.

Most recent figures show men's habitments account for roughly 82 per cent of total apparel class wool consumption, while women's wear uses 88 per cent.

There are approximately 800,000 wool growers in the United States and together with employees of mills, cutting and tailoring establishments, it is estimated that close to 5,000,000 persons are dependent upon wool for a livelihood.

Martha Raye, eccentric comedienne-singer, played in a vaudeville act with Bob Burns, the hoochie hero from Arkansas, several years ago. They met again when they were teamed in a recent film.



Better Equipment

Spells —

- Added Efficiency!
- Greater Economy!
- Increased Out-put!

— That Is Why The —

New Warehouse of Orchard Park Farms, Inc.

• IS EQUIPPED WITH •

CUTLER Improved FRUIT WASHERS and DRIERS CUTLER Rotary Bin GRADERS • CUTLER Wave-Motion SORTING TABLES!

Facilities such as CUTLER offers assures fruit packing plant operators fast, effective handling of peak plant loads . . . Fruit is washed, dried, graded and sorted to assure clean, uniform packs and a minimum loss of time on the part of the entire plant crew . . . Cutler equipment actually PAYS FOR ITSELF in faster, more efficient operation of a modern packing plant!

HUBBARD - WRAY CO.

29 NO. RIVERSIDE — Pacific Highway Near Main — PHONE 202

No Delay
When—
PAXTON
Box Making
Equipment Is
Used!

Maximum production calls for NO DELAY in boxes in the modern fruit packing plant . . . That is why Mr. Leverette has selected PAXTON Automatic Nailing Machines and PAXTON lidding and box making machines for the ORCHARD PARK FARMS' new warehouse.

Cutler Washers and Dryers

With no screens or jets to clog, the Cutler Washer and Dryer sends fruit through the necessary acid solution, washes it thoroughly in fresh water, dries it with a simple, effective, absorbent towel drier unit, preparing it for a clean, attractive pack.

Cutler Rotary Bin Graders

These graders enable the average packer to increase his out-put from 10% to 15%, avoids congestion in the plant and eliminates stem punctures and bruises!

Cutler Wave Motion Sorting Tables

These sorting tables materially speed-up out-put in a packing plant and assure more careful and systematic handling of fruit.