

ELECTRIC WORK DONE AT PACKING PLANT BY TROWBRIDGE & FLYNN

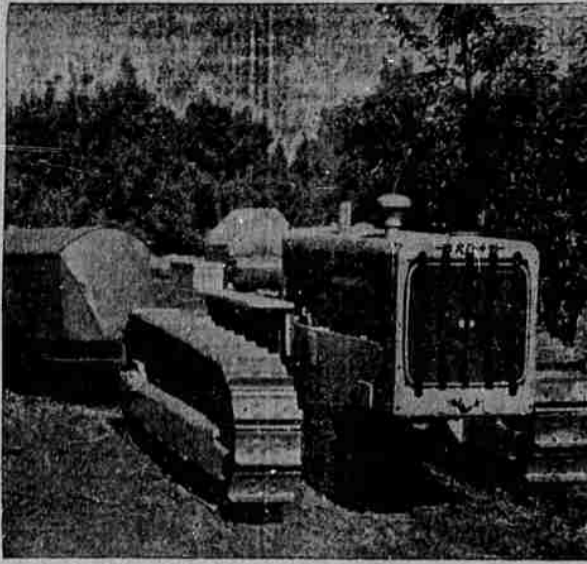
Electric installations in the new modern packing plant of Orchard Park Farms, Inc. were made by the Trowbridge & Flynn Electric company, which was recently organized by Ben Trowbridge and Diamond Flynn, purchasers of the wiring construction, repair business and lighting fixtures of the People's Electric store.

The new electric company occupies the east half of the People's Electric headquarters where extensive improvements have been completed, including re-decorating. Lighting fixtures and lamps of all types are attractively displayed along with a large Friedrich commercial refrigerator. Trowbridge and Flynn have been appointed service and sales agent for Kelvinator's commercial line in Jackson county.

Both Ben Trowbridge and Diamond Flynn have been associated with the People's Electric since 1920. They have announced that they will continue to operate under virtually the same policy and with the same personnel formerly maintained by their departments at People's. The following experts are included on the staff: Lester Ettinger, Walter Cormany, Ivan Waddell, Donald Brenner, Charles Wakefield, Harold Stevens, Jimmy Bohl, Ray Ettinger, Fred Snyder and Roy Williamson.

All service calls previously directed to the People's Electric will be taken care of by Trowbridge and Flynn Electric company, Mr. Trowbridge stated. They specialize in domestic and commercial illumination.

Heads Caterpillar Squad



The RD-4 True Diesel Caterpillar (above) leads the tractor squad on the Orchard Park Farms, Inc. properties. This machine with two Model 22 caterpillars were purchased from the Hubbard-Wray company of Medford.

3 CATERPILLARS SERVE ORCHARDS

Caterpillar tractors sold by Hubbard-Wray company are used in plowing, discing, cultivating and spraying on the 17 orchards of the Orchard Park Farms, Inc., their dependability and efficiency being vouched for by Walter Leverette, president of this extensive fruit concern.

The leader of the Orchard Park Farms tractors is a RD-4 true Diesel which operates with ten foot, six inch offset discs. Two small Caterpillars, Model 22, are doing auxiliary service on the 17 orchards. The three operate for a total fuel cost of \$3.25 per day, according to Mr. Leverette.

Caterpillar's non-slip all-weather traction assures year 'round operation which is essential to Rogue River valley farmers and orchardists. M. T. Wray, of the Hubbard-Wray firm pointed out today.

CHEVROLETS USED IN ORCHARD WORK

Standardizing their fruit handling facilities, Orchard Park Farms, Inc. purchased five Chevrolet trucks from Rogue River Chevrolet, Inc. These cars were particularly favored by this extensive local concern because of their low-price range and their reputation for economical all-round operation.

Chevrolet trucks are the only low-priced trucks with such advanced features as high-compression, valve-in-head engine, new perfected hydraulic brakes, full-floating rear axle on 1 1/2 ton models, C. M. Hurd, manager of Rogue River Chevrolet, Inc. stated. Their adaptability for orchard and farm use has been instrumental in making this one of the greatest truck years in all Chevrolet history, he stated.

In expressing his complete satisfaction with Chevrolet trucks, Walter H. Leverette said: "Our five trucks are giving us fine service. Gas mileage is low, as well as oil consumption, and our repair bills are extremely reasonable."

Affirmative Vote For School Annex

JACKSONVILLE, Aug. 19.—(Sp.) City taxpayers met Friday evening at a special election called by the school board and again voted in the affirmative for an addition to be built on the school house.

The work will be started very soon to insure completion before the fall term.

FIRST PUYALLUP PEARS ROLLING OUT THIS WEEK

PUYALLUP, Aug. 19.—(P)—First carloads of the 2,500 tons of eastern Washington pears under contract at the Washington Packers, Inc., plant, will roll out of here this week. Manager Clyde Farquhar said. Between 300 and 500 persons will be employed to can and handle the fruit, he said.

Veteran Bonus Buys Taxi Jaunt

WASHINGTON, Aug. 19.—(P)—Taxi driver Ray Rose was back home today from a \$260 run which took his cab to San Antonio, Tex.

"They sure didn't get much good out of the scenery," said Rose of his two "fares," Sergeants Dennis O'Brien and William Harney, who with their pockets full of bonus money halted him near the soldiers' home on Aug. 5 and said "to Texas."

Rose said his "fares," whom he left in San Antonio, paid all his restaurant and hotel bills "and whenever we changed clothes we threw the old ones away and bought new ones."

We Write INSURANCE

FOR ORCHARD PARK FARMS, Inc.

Our Best Asset Is a Satisfied Customer



TELEPHONE 130

MISSOURIAN, 97, FINDS POLITICS TOO IRKSOME

IBERIA, Mo.—(UP)—Running for office has become tiresome to John Ferguson, 97.

When his term as Justice of the peace expires in 1938, Ferguson will be within a few months of 100 years old, and will retire from politics he says.

"If you let troubles get on your mind you'll ruin your body," is the way Ferguson advises those who want to live long.

Colony of Beavers Troubling Farmer

GREAT BEND, Kans. (UP)—Fred Schlessiger, farmer living 23 miles northeast of here, faces a real dilemma.

A colony of beavers on his farm have gnawed down several trees, one being a valuable cottonwood 18 inches in diameter at the base. Schlessiger prepared to shoot and trap the beavers, but learned it is against the law to do either.

Just how to save his trees and not violate state laws is the problem he must work out.

UNITED WOULD ADD TWO CITIES ON EASTERN RUN

WALLA WALLA, Aug. 19.—(P)—United Airlines will place Walla Walla and Lewiston on its Pendleton-Spokane line provided the postoffice department gives approval. W. A. Patterson, president, told a chamber of commerce delegation that met here late Monday.

Walla Walla's landing field is satisfactory to United, O. C. Richerson, division superintendent at Portland, said.

Dentist Leader Dies. PORTLAND, Ore., Aug. 19.—(AP)—Dr. George H. Warner, 60, past president of the Oregon State Dental association, died Tuesday at his home. Dr. Warner came to Portland in 1908. He is survived by his wife, a son and a daughter.

King Edward's Cocktail Packs Terrific Wallop

NEW YORK, Aug. 19.—(P)—Manhattan bartenders lifted eyebrows today when they read about the cocktail King Edward served his guests on his Adriatic yachting trip.

They agreed his majesty had put one over on New York's masters of jiggers and shakers.

"A fellow who takes that one doesn't want a drink—he wants to go to sleep," remarked Joe Hollis with a pensive look and a shake of his head.

"Boy and man, I've been mixing drinks for 30 years, but that's a new one on me," he added. "I've never heard of that concoction or anything like it."

"Sounds like a hot one," called Al Smith, (not the former governor) who serves what'll-you-have at an exclusive hotel.

"If that won't knock you on your ears, I don't know what should."

What the king served on his yacht in the Dalmatian region of Yugoslavia was an approximation of this:

One third of gin, a small quantity of sugar and ice, two jiggers of Dalmatian liquor resembling chartreuse, Dalmatian champagne and various fruits, including olives and lemon peel.

"That's power," said the drink master. "Do you know the king rolled three cocktails into one."

Joe Hollis figured it made nearly a half pint of gin, liquors, and champagne.

"Two jiggers of Dalmatian liquor, that's three ounces," he said. "One third of gin is another, making four, and by the time you slap in the cham-

pagne you've got better than seven. Whew!"

The average cocktail, they explained, contains about two and one-half ounces. They expressed doubt New Yorkers would go for "the King Edward."

DUDE WRANGLER WEDS DESCENDANT OF TYLER

SHERIDAN, Wyo., Aug. 19.—(AP)—Miss Margaret Gardiner Tyler, 24, granddaughter of former president John Tyler, and Clifford Glenn, 22, Montana dude wrangler, were married in a quiet ceremony here today.

Fined for Fire. KLAMATH FALLS, Aug. 19.—(AP)—Wayne Berry, 20, was given a suspended sentence of 90 days in jail and a \$500 fine in Justice W. B. Barnes' court here late yesterday after he pleaded guilty to permitting a fire to escape. It was Berry's grass and weed fire that broke away and spread over Stikel mountain.

COMPLETE ELECTRICAL INSTALLATIONS

New Modern Packing Plant Orchard Park Farms, Inc.

WERE MADE BY Trowbridge & Flynn Electric Co.

Complete Industrial Installations of This Type Are A Specialty of This Firm

WE --- CONGRATULATE MR. WALTER LEVERETTE

—upon the completion of this modern, new fruit packing plant . . . one of the finest in the west. The newest in industrial equipment of this type has been installed in this fine plant and we are proud of the fact that this firm handled exclusively the electrical installations. The job we have done for ORCHARD PARK FARMS, INC., is typical of the high quality, thorough wiring service we are equipped to offer industrial firms as well as home owners in southern Oregon.

BEN TROWBRIDGE
DIAMOND FLYNN

Motors Were Installed; Magnetic Controllers Placed; Full Wiring Handled and Fixtures Sold and Installed.

Regardless of the type of electrical job . . . from the largest industrial installations to the smaller home wiring . . . we are in a position to offer quick, capable service at uniformly moderate cost . . . We invite you to discuss your next electrical problem with us . . .

Some Of The Finest Real Estate Holdings Of —

ORCHARD PARK FARMS, Inc.

Have Been Sold to Mr. Leverette Through the Office of

Brown & White
104 WEST MAIN

For quick and satisfactory results list your properties with BROWN & WHITE, 104 West Main.

CLINTON SPENCER
REAL ESTATE MANAGER

BEN TROWBRIDGE & DIAMOND FLYNN
ELECTRIC COMPANY
212 WEST MAIN ST. MEDFORD - PHONE 12