

# GROCETERIA SUPER FOOD MARKETS

ONE SHOPPING STOP FOR EVERYTHING

## Home Purity Bakery

After all is said and done—the bread contributes most to sandwich flavor.

Try Home Purity bread in the lunch box and let the men decide what kind of bread they want.

1 lb. loaf 8c—1½ lb. loaf 12c

## APPLE ROLLS

Here is a fine lunch box dessert roll. Rich with apple—and easy to pack.

3 for 10c

## Caramelized Fruit Rolls

A fine lunch box or breakfast roll—rich with fruits.

6 for 15c

## Home Purity Cookies

Cookies are a favorite with all kinds of kids—both little and grown ups.

Doz. 10c

## Sesame Hard Rolls

A hard crust roll heavily coated with Sesame.

Doz. 15c

## Pound Cakes

Just the right size for the small family.

Each 15c

## Fig Bars

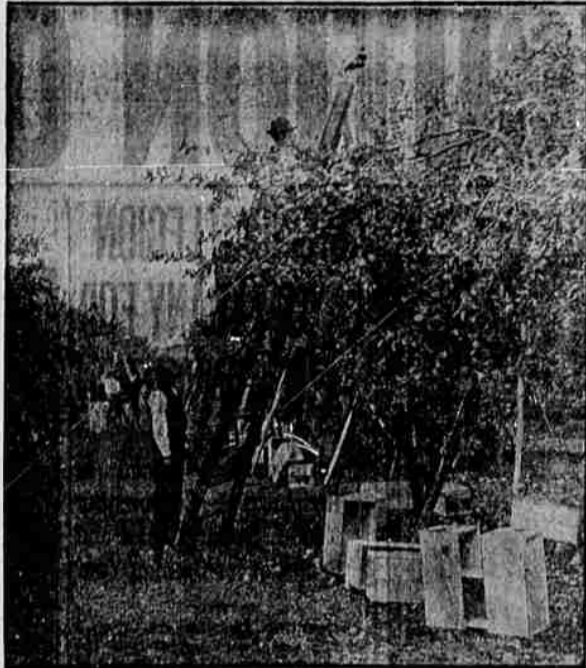
A tasty cookie rich with figs.

Doz. 15c

## Angel Cake a la Silhouette

A two color—white and chocolate Angel Cake of the home quality found only at your Groceteria.

Whole Cake 49c—½ Cake 25c



## LUNCH BOXES

INTO the orchards and the packing houses go hundreds of lunch boxes every day in the week.

Packing a daily lunch is not an easy job—To supply foods with appetite appeal, yet keep costs within reason, is a problem, the solution of which is found in variety only. To supply that appreciated variety from the home table makes home living costs too high.

Try this:—Buy a pound of our assorted cooked luncheon meats.—In every pound are six varieties.—A different kind of sandwich for every work day.—The next week change to Meat Sandwich Spreads or Cheese this providing a pleasing surprise for the worker carrying the lunch.

Best of all this actually saves time—work and worry yet costs less than the extra cooking necessary to provide a carry-over for the lunch boxes.

## Lunch Box and Other Savings In the Groceteria

“A Dependable Source of Supply”

Bay Brand Tuna Flakes No. ½ can—2 for 25c  
For sandwiches—for salads—A welcome change in the lunch box.

Jitney Sardines 4 cans 15c  
Packed in 8 oz. round can—a dandy for the lunch box.

Del Monte Sliced Peaches, 8 oz. tin; 4 for 25c  
A fine fruit for the lunch box—Just put the can in the box.

Del Monte Pineapple Tidbits, 8 oz. can; 4 for 25c  
Another lunch box dandy.

Underwood's Deviled Ham, med. can; 2 for 25c  
Scrambled with eggs—makes a fine sandwich or omelet for breakfast.

Armour's Star Deviled Meat, ½ size can; 3 for 10c  
One of the tastiest of sandwich meats.

Armour's Star Ham Loaf No. ¾ can 15c  
Slices fine for sandwiches.

Armour's Star Veal Loaf No. ¾ can 15c  
Any ground meat mixed with our Home Purity Sandwich Spread makes a fine sandwich.

Armour's Cooked Calf Brains, No. ½ can 10c  
Serve with scrambled eggs for your breakfast.

Armour's Star Vienna Sausage, No. ½ can 10c  
A finer flavored Vienna Sausage.

Milani's Chicken Sandwich Spread, No. ¼ can 10c  
Just a touch of variety in the lunch.

Kraft's Package Cheese ½ lb. 17c  
Old English—Cheddar—Swiss and all other varieties.

Kraft's 2 lb. cheese loaf 63c  
American or Cream brick—Just the right size to slice for sandwiches.

Kraft's Swiss or Pimiento 2 lb. brick 73c  
Adds variety to the lunch box or the cold plate at home.

Tillamook 2 lb. Brick Cheese, each 57c  
Sandwich size—Well cured Tillamook.

Ladino Cream Cheese lb. 20c  
That fine Eagle Point quality cream cheese.

Baker's Farmington Chocolate, slab of 10 bars 15c  
A bar of chocolate in the lunch is a welcome treat.

Schilling's Baking Powder, 2½ lb. can 79c  
A pure cream of tartar Baking Powder—(Two fine glass sauce dishes free with each can.)

Schilling's Vanilla Extract, 2 oz. bottle 19c  
For ice cream—or your baking—the finest.

Shredded Wheat Biscuit pkg. 11c  
The original shredded wheat.

Z-MOR-U Stuffed and Plain Queen Olives

Z-Mor-U fancy Queen Olives 5½ oz. bottle 13c 7½ oz. bottle 15c

Z-Mor-U Pimiento Stuffed Queen Olives 3½ oz. bottle 10c 5½ oz. bottle 15c 15 oz. bottle 39c

Quart jar .83c

Z-Mor-U Onion Stuffed Queen Olives 5½ oz. bottle 19c

World Over Brand Dill Queen Olives 7½ oz. .15c Qt. jar .59c

Rio Grande Brand Queen Olives 7½ oz. .13c 1 pt. 6 oz jar 29c

Quart jar .39c

## SUPER MEAT MARKETS

### A Good Lunch Box Sandwich

There is no finer sandwich meat than cold roast beef—if the beef is flavorful and tender.—On the other hand roast beef can be the poorest of all sandwich meats. During the fruit season use roast beef sandwiches about twice a week, but be sure it's our well seasoned Steer Beef.

You may then be sure of the kind of beef that makes the finest of all sandwiches.—The flavor and texture is such that the sandwiches will have that appetite appeal that makes the lunch appreciated while the meat will be so tender that "stringiness" will not make the sandwiches hard to eat.

Steer Beef Roast lb. 15c  
Delicious sandwich meat for about a cent a sandwich.

Shoulder Pork Roast lb. 19c  
Nearly every man likes a good roast pork sandwich.

Shoulder of Lamb Roast, lb. 18c  
A slice of roast lamb with some Home Purity Sandwich Spread—mighty good sandwich.

Boned and Rolled Prime Steer Roast, lb. 23c  
The finest rib roast—bones out—Fine flavor.

Steer Sirloin or Round Steak, lb. 23c  
A treat for lovers of good steaks—Cut to your order.

Assorted Luncheon Meats, lb. 29c  
Six kinds in each pound—a different sandwich for every day in the week.

Morrell's Pride Skinned Hams, lb. 33c  
Part or whole Ham—Right from the corn belt.

Morrell's Eureka Bacon, lb. 32c  
A fine flavored corn belt bacon—Any size piece.

Baked Veal Loaf lb. 25c  
Baked in our own kitchen—A fine sandwich loaf.

Huber's Roast Beef lb. 39c  
Ready cooked and sliced for sandwiches.

Home Purity Potato Salad, pint 20c  
In moisture proof container—From our own kitchens.

Sweet Pickles pint 15c

Sweet Mustard 25c

Pickles, pint 25c

Knight's Dill Pickles 9c

Swift's Milk Fed Fryers, lb. 25c  
For the Sunday fruit worker—Why not?

## Fountain Refreshments

### Pineapple Delight Parfait

A generous serving of Home Purity Ice Cream with layers of Pineapple cubes between—

15c



## Double Dip CONES

Those big two portion cones filled with Home Purity Ice Cream. 5c

## Crushed Fruit Ice Cream Soda

Choice of Pineapple or Strawberry—with a double portion of Home Purity Ice Cream. 10c

## FOUNTAIN DINNERS

Roast Turkey with dressing . . . . . 29c

Breaded Veal Cutlet . . . . . 25c

Baked Armour's Star Ham . . . . . 29c

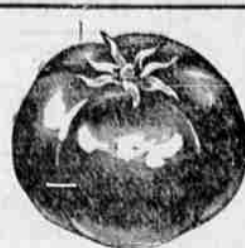


FREE PEN & PENCIL SET



## Finer Quality FRUITS & VEGETABLES

### Bob Field's CANTALOUPE

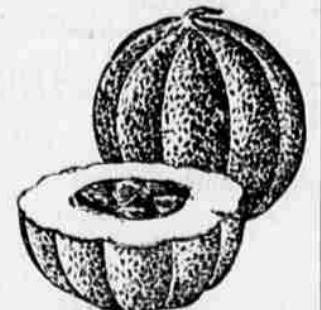


Bob Fields Extra Fancy TOMATOES  
Fine quality meaty tomatoes—carefully sorted to assure fine slicing quality.

3 lbs . . . 10c

### HEARTS of GOLD HALES BEST

Bob has two varieties—Hearts of Gold is a dark salmon colored meat with green skin—very sweet. Hales Best is similar to the California shipping variety—pink meat with a light skin.



Choice . . . 4 for 15c

6th at Central  
6th at Grape  
Savings Without Self-Denial

# GATES & LYDIARD

Delivery of \$1.00 Orders  
Phone:  
West Side 428  
East Side 752