

# AUTOMOTIVE NEWS

## YOUNG'S SHOP IS ASSOCIATED MOTOR CHECKUP STATION

With vacations just ahead, now is the time for western motorists to have their cars tuned up at an Associated motor check station in order to get the greatest enjoyment from spring and summer travel.

This advice is given by P. E. Allan, domestic sales manager for Associated Oil company, in announcing a tremendous increase in the use of Associated's new Aviation Ethyl gasoline and in the number of customers served by the motor check stations.

Both Associated Aviation Ethyl gasoline and motor check service are being featured in the company's current newspaper advertising campaign, which is its largest for several years.

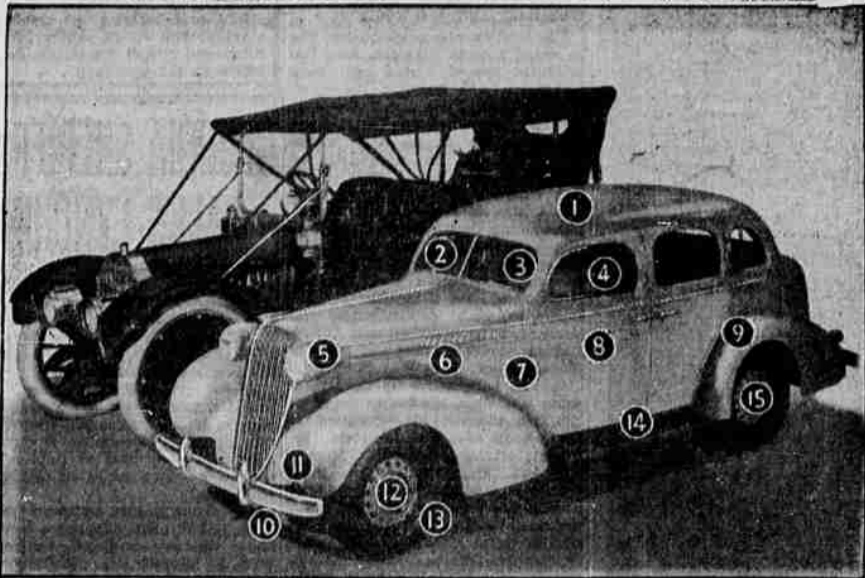
Associated Aviation Ethyl gasoline has been developed to fulfill the requirements of the modern high compression, high speed motors for a fuel with greater volatility. Mr. Allan explained, while the motor check stations were established to tune up motors for maximum performance and economy with use of Associated Aviation Ethyl gasoline.

The Medford motor check station is operated by Young's Service Shop, 114 North Front street.

Most recent model cars must have their spark and carburetors adjusted "down" in order to use ordinary gasoline, thus losing as much as 15 per cent in power, Mr. Allan added. Purpose of the motor check station is to restore these adjustments to normal and thus give motorists the full power and performance that the manufacturers built into their cars.

"The motor check service also is an adjustment station where the 12 checks necessary to properly tune a motor are made by experts using the latest precision equipment," Mr. Allan declared.

## QUARTER CENTURY OF AUTOMOBILE SAFETY



A score of major improvements in motor car design reveal the progress made in safety by automobile manufacturers during the last 25 years. D. E. Ralston, Oldsmobile vice president and general sales manager, points out fifteen of the more important changes made in the interests of safety are illustrated in the above comparison of 1911 and 1936 model Oldsmobiles. 1—The solid-steel Turret-Top has replaced the fabric top. 2—Windshield wipers, unknown in 1911, now provide clear vision in bad weather. 3—Center-control steering has demonstrated its superiority over the less positive, harder handling type of steering system. 4—Safety Glass all around has replaced ordinary glass. 5—Multi-beam lighting provides maximum illumination for every driving condition. In contrast to the inadequate acetylene gas lamps of 1911. 6—Greater acceleration has given the 1936 Oldsmobile the additional flexibility needed to matter modern emergencies. 7—The positive shift starter has replaced the hand crank, eliminating that hazardous task. 8—Closed car bodies of steel, giving protection all around to modern motorists, were undreamed of in 1911. 9—The ride stabilizer has minimized body roll, improved ease of handling and increased safety. 10—The turning radius has been greatly decreased. 11—Knee-Action wheels, with heavy coil springs, have replaced the flat, leaf type, front springs, and have vastly improved comfort and ease of control. 12—Sixteen inch safety-steel wheels provide safety impossible with the early forty two inch wooden ones. 13—Low pressure tires, with safety-tread design, replacing the high pressure type, minimize skidding and blow-out dangers. 14—Lower center of gravity results in greater roadability and riding comfort. 15—Four wheel Super-Hydraulic brakes have supplanted the uncertain two wheel mechanical brakes.

## SECOND VICTIM OF BOMB OUTRAGE

WILKES-BARRE, Pa., April 11.—(AP)—The Wyoming Anthracite valley's "Easter gift" bomb outrages claimed their second victim tonight when four-year-old Thomas Maloney, Jr., died in a hospital.

Michael Gallagher, 70-year-old cemetery sexton, died yesterday, when one of the six bombs sent through the mails in the guise of Easter gifts, exploded as he opened it.

The Maloney boy was the son of Thomas Maloney, organizer of the United Anthracite Miners, a union, since virtually disbanded, which was opposed to the United Mine Workers of America.

Mine labor dissension has been suspected in some quarters for the bombs.

## NORTHWEST TRADE FOR EASTER HIGH

(By the Associated Press) The windup of the best Easter trade in the Pacific Northwest in five years ended Saturday.

The Pacific Northwest's increased retail sales were 14 per cent better than a year ago, and from 20 to 35 per cent better than in 1931, the Seattle office of Dun & Bradstreet reported.

Estimates in retail circles indicated that retail profits for the first three months of the year will be the best since 1929.

Most of the reports by leading department stores on 1935 results which have appeared thus far have shown a marked change for the better in net profits—a trend which is believed to have been betided by 10.4 per cent thus far during the spring season.

## Foots Creek

FOOTS CREEK, April 11.—(Sp.)—Mr. and Mrs. Venell Cerveny left on Wednesday for Bend, Oregon, to spend Easter with relatives. They expect to be away for an indefinite time. Tuesday evening eighteen members of the Sunday school met at the Clay Hill home and gave the Cerveny's a surprise party in appreciation of their help in the Sunday school work here.

Mr. and Mrs. Marion Lance were Medford shoppers, April 7.

Mrs. R. C. Kelsey of Portland and Mrs. Millie Walker of Gold Hill called at the R. L. Miller home, April 7.

Mr. and Mrs. Elsie Stumbo were Grants Pass visitors April 8.

Norma Lee Ward spent Tuesday evening with her cousin, May Biles.

Mr. and Mrs. Olen Hutchins, Jr., of Medford visited at the Hutchins home April 8.

The Hale family have moved to the Carr place recently vacated by the Maple family.

Mr. Chambers of near Rogue River is drilling a well on the R. L. Miller property.

More Rail Traffic

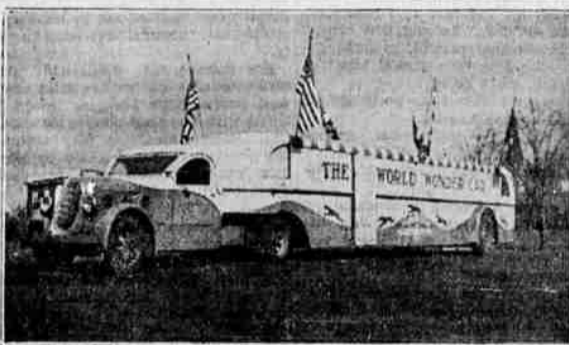
PORTLAND, April 11.—(AP)—Summer railroad traffic surpassing that of 1929 will be experienced, C. J. Collins, assistant general traffic manager of the Union Pacific system, said today.

## Greets Summer Sunshine or Shower



The LaFayette cabriolet or convertible coupe is built to produce open car thrills in spring and summer driving. The flexible top is so easily and quickly adjusted that showers or broiling sun constitute no problem. Smart and luxurious, the cabriolet appeals to younger people. This year it is available with automatic cruising gear which makes driving more delightful and saves gas and oil.

## World Wonder Car Coming



The largest traveling museum in the world, the World Wonder Car, will visit Medford Tuesday and Wednesday under auspices of the American Legion. The car carries government displays from nearly every country in the world, the exhibits being collected and arranged by John D. Lippy, Jr., of Washington and carrying the endorsement of the federal bureau of education.

served and plans made for next meeting to be held at the home of Mrs. Whipple in Rogue River. Mrs. Badley was elected vice-president of the club as Mrs. Murray has moved away. Refreshments were served by the hostess, Mrs. Badley, at the close of the meeting. Serving committee for next Grange meeting is Badley's, Bricker's and Chas. Ross.

Dore Swats "Foes" PORTLAND, Ore., April 11.—(AP)—Mayor-elect John F. Dore of Seattle took a post-election crack at his recent foes—the Order of Cincinnati—during a visit here. "The organization's commander has distasteful powers which is something that never will be countenanced in this country," he said. Use Mail Tribune want ads.

## Live Penguins With Marine Exhibit



Here we see "Ike and Mike," members of the penguin family that accompany the monster 68-ton whale.

One of the most remarkable creatures of the animal kingdom is the proud, strutting penguin from Little America. When Admiral Byrd and his party landed in Little America, countless millions of these funny little fellows were the only reception crowd. Having never before seen a human being, they came up and were very friendly.

with the entire Byrd crew, the reason they had no fear was that nothing had ever scared or tried to hurt them, and they were the pets of every man at the Antarctic base.

When the Eureka Whaling company brings their mammoth marine exhibit of sea life here Monday and Tuesday, April 13, 14, on a specially constructed railroad car over 100 feet long, which will be located near Main street on the Southern Pacific tracks, the exhibition will include among the many attractions, a family of penguins from Little America. Other features of the exhibit are a monster 68-ton whale, man eating sharks, a giant octopus, Seattle sea-monster, black widow spiders and others.

The exhibit car will remain here for two days only and will be open to the public from noon until 11 p. m. daily.

## THE GRANGE

Live Oak Grange Live Oak Grange met April 6 in regular session. Lecture program, in charge of the worthy chaplain, consisted of readings, instrumental music and song by the Grange and two duet selections by Mrs. Marjorie Penn and J. W. Fish of Gold Hill Grange.

Miss Marie Block was initiated in first and second degrees. After regular business refreshments were served by Millie Walker, Nora Wait and Lety Miller.

H. E. Club met April 8th at the Badley home, nine members being present. Quilt blocks were cut and

## X-RAY SYSTEM reveals vital hidden differences INSIDE low-priced cars!

You see with your own eyes the vital features that manufacture LEAVE OUT of their low-priced cars but POINT TO WITH PRIDE in their higher-priced cars!

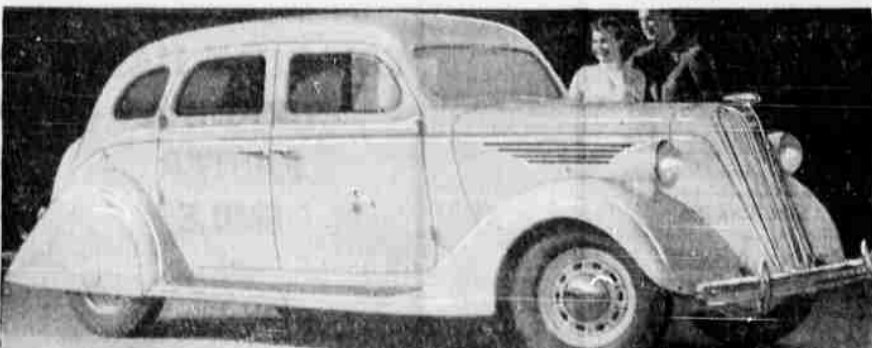
lubricated exactly like the highest-priced cars. That they will run "sweeter" and keep their new-car "feel" longer after other cars have failed.

SPECIAL TOURING FEATURES! Cut travel costs... give more miles per dollar... increase vacation pleasure! Sleeping Car—Any Nash "400" or LaFayette sedan instantly converted into a six-foot bed with seat cushions... Large Luggage Compartment—in every model... Automatic Cruising Gear—gives 4 to 5 more miles per gallon on cross-country driving... Ask for a Touring Demonstration.

LOW MONTHLY PAYMENTS THROUGH NEW 6% C.I.T. BUDGET PLAN

The X-Ray System will show you things that you've never seen before... vital, hidden differences INSIDE the low-priced cars. And it will show you, beyond all doubt, that Nash "400" and LaFayette are the ONLY cars in the low-price fields that are engineered, powered and

Fig. Luxurious Nash Ambassador sedan with trunk—125-inch wheelbase—\$525 to \$900 f.o.b. factory. All prices subject to change without notice. Special equipment extra.

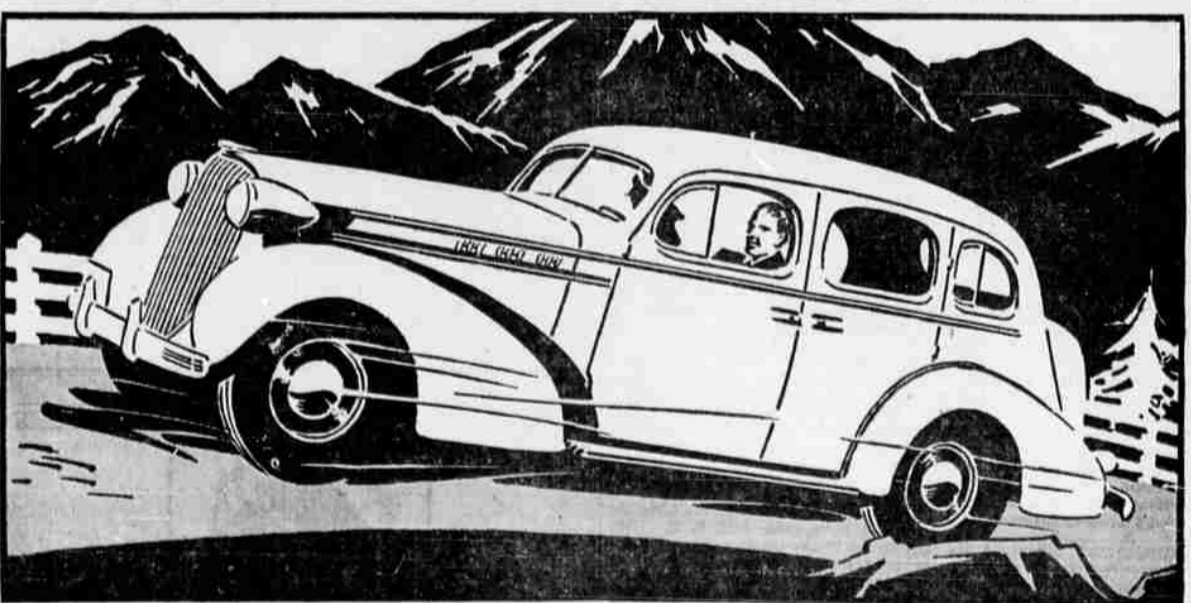


DE LUXE LAFAYETTE FOUR DOOR SEDAN WITH TRUNK NASH "400" \$665 AND UP. FACTORY LAFAYETTE \$595 AND UP. FACTORY

## NASH and LAFAYETTE

123 S. Riverside. WALTER W. ABBEY, Inc. Telephone 303

## SMOOTHER, LIVELIER PERFORMANCE!



## DRIVE AN OLDSMOBILE - get every fine car thrill... every fine car feature - all at low cost

TAKE the wheel of an Oldsmobile for a new conception of smooth, unlabored power... lively response... brilliant performance! Note the comfort and safety advantages of Knee-Action Wheels, Super-Hydraulic Brakes, Solid-Steel "Turret-Top" Body by Fisher, Center-Control Steering and Safety Glass standard all around... all yours at a price but a little above the lowest!

Make the COMPAR-O-GRAPH Test! Use this quick, handy device to check Oldsmobile's features and values... to compare other cars of similar price with Oldsmobile. Come in and get your copy, free, or write Olds Motor Works, Lansing, Mich. DELIVERED FULLY EQUIPPED \$898 \$1076 for the SIX for the EIGHT

## OLDSMOBILE 6 • 8

"The Car that has Everything" J. J. OSENBRUGGE 132 South Riverside Phone 1100

## HULL BET 10 TO 1 NO GENERAL WAR; TO AID NEUTRALS

(Continued from Page One) as they existed prior to the World war, as nearly as we find it consistent and as other nations find it consistent to do so. Opposing a flat embargo on commodities of the character of war supplies, Hull advocated instead that such trade with belligerents be confined to "normal" peacetime proportions.

NOTHING like it in this city ever before! It's sensational! See editorial page.