

AUTOMOTIVE NEWS

WARD'S TO STAGE DRAMATIC SAFETY SHOW ON TUESDAY

The blast of a horn—the grind of brakes—the screech of rubber as it grips cement—and sudden death! This scene, all too common on highways and city streets today will be duplicated up to the very last part here next Tuesday, April 7th, it was announced today by H. L. Brown, Montgomery Ward store manager, who told of a safety show the company is sponsoring and which is free to the public. The show will be staged at 2:30 p. m. on Fir street between Main and Eighth.

Gus Schrader and Lew Brown, famous racing drivers will give a demonstration on how to drive and how not to drive, showing the dangers of taking chances at the wheel. Jack Story, nationally known announcer, will describe the show to onlookers over the amplifying system.

The Montgomery Ward Safety Show will provide thrills and instruction in good driving for the spectators. Each half-breath escape will teach a lesson. Each will be followed by a demonstration of the correct driving procedure which the situation calls for. The running account of the show which Story will relate over the loud speakers will be told as only Story can tell it—packed with drama, suspense and significant information.

Mayor George Porter has offered his fullest co-operation. "I believe that this show, with its colorful performances, will do more to impress the minds of the public than thousands of printed words, in spite of the immense effect which recent writing on the subject has produced," he said in offering the use of the city streets and the co-operation of the police department.

"We are glad to do our share in this effort for better driving," said Clatous McCredie, chief of police, in confirming the mayor's offer of police cooperation. "We who are so familiar with the awful tragedies resulting from carelessness or lack of knowledge at the wheel, welcome any effort which may serve to impress citizens with the chances they take."

The Ward safety show will dramatize much of the recent writing on the subject of safety. Scenes such as have been vividly described by aroused and awakened writers within the past months will be acted out by the drivers in a realistic manner. Instructions on how to drive safely, which have been widely printed, will be seen by the spectators in actual demonstration.

O. T. Gage Opening New Motor Winding And Parts Service

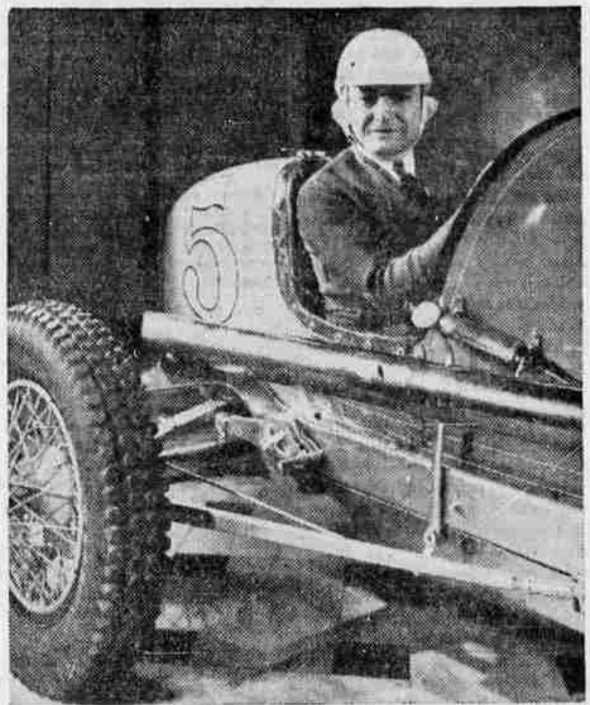
O. T. Gage, former service manager for United Motors in San Francisco, has opened a new motor winding and parts service, known as the Gage Electric Motor Service, which will be operated with the Medford Electric Construction Co. in the basement of the Medford building.

Mr. Gage is authorized distributor for Delco Rural lighting and water systems and he will have a complete stock of Delco factory parts and motors. Mr. Gage, who was formerly with the Delco factory, has had 20 years experience in motor work.

Mr. Gage says, "We believe there is a real need for Delco service in this territory due to the fact that so many nationally known refrigerators and washing machines have Delco motors. We have everything in our shop that modern science has developed for motor testing. All work will conform to factory specifications."

Inquiries about this new service are already coming in from as far as Eugene, Klamath Falls and Redding, according to Mr. Gage.

Famous Race Drivers in Safety Show



Impersonating "America's Most Careful Driver," Gus Schrader, shown in his racing auto, will show the crowds at the Montgomery Ward safety show how driving should be done in the interest of safety. His driving stunts will be contrasted with the antics of Lew Brown, shown below, billed as "America's Most Careless Driver." Both are veterans of the dirt track speedways. The show, which will be announced over the loudspeakers by Jack Story, Wards narrator and nationally known announcer, will take place on Fir street between Main and Eighth Tuesday, April 7, at 2 p. m. and is free to the public.

Credit Plan Helps Safety Campaigns

One of the biggest features of the annual spring sale of the Lewis Super Service Station is the liberal credit plan they employ. This makes it possible for motorists to purchase the things they need for their automobiles and pay for them on a regular stated budget basis, according to Jack Anstey, budget manager.

"No longer need the car owner put off purchasing the equipment he needs for safe driving because he does not have ready cash available," Mr. Anstey says. "Our budget department is set up to enable motorists here to make their purchases at once and pay for their equipment in small stated amounts while it is being used."

Safety on the highway will be the principal theme throughout the spring sale, Mr. Anstey says. Many special offers of items designed to

make the car safe for heavy summer driving are included in this sale.

"We feel our budget plan is a big contribution to the safety campaigns being conducted throughout the country," Mr. Anstey declares. "It makes it possible for a motorist to put his car in safe condition at once, and then pay for the material and service in small installments."

"I believe motorists on the whole have been convinced that periodical checkups of their automobiles are vital to the safety of themselves and their families."

Mineral Survey Approved
ROSEBURG, Ore., April 4.—(AP)—A mineral survey of Douglas county, conducted as a WPA project under county sponsorship, is to start next week. It was announced here today by Judson E. Keezer, executive secretary for Douglas county.

8 Midget Photos 15c. PEASLEY

JOAN PATTERSON TO GIVE CUES AT HOMEMAKER MEET

The home makers of Jackson county are looking forward with keen interest to the program plans for the first annual home furnishing day to be held next Wednesday, April 8, at the First Methodist church, commencing at 10 a. m., according to Mabel C. Mack, home demonstration agent. Advance reports indicate that every home extension unit of the county will be represented, and a special invitation is extended to home makers of Medford and Ashland, Mrs. Mack stated.

Miss Joan Patterson, extension specialist in house furnishings, will be the speaker. Miss Patterson is a graduate of the University of Oregon in school of architecture, and has her master's degree in interior decorating. This training, plus her fine practical experience, gives her an unusually fine background for home planning and home furnishing work. The program promises much for home makers that will be helpful in the annual spring renovation of homes. Some curtains, or draperies, or roller shades will doubtless need replacing to brighten up that room or perhaps the bathroom woodwork requires a new coat of paint. "What style of curtains should I use in this living room, and what color scheme would be best for the bathroom?" These and other questions that trouble the home maker will be answered by Miss Patterson Wednesday in her discussions. At the morning session she will discuss "Decorating the Home" including election of materials suitable for certain types of rooms and for various types of windows, styles of curtains, draperies, and roller shades, and inexpensive uses of window decorations. The afternoon discussion centers on "Color in the Home."

All home makers attending are asked to bring an individual box lunch and coffee will be served by the county extension committee. The program closes at 3:30 p. m.

Dive to Death
MONTEREY PARK, Calif., April 4.—(AP)—Lieutenant Browne Clement, of the 73rd attack squadron from March field, army air base, plunged to his death in a freakish plane accident today.

Buckingham's Ice Cream, Candy & Party Specials The Great 23c. Cent.

JOHN A. JEFFREY CANDIDATE FOR UNITED STATES SENATOR

John A. Jeffrey, the Democratic candidate for United States Senator, for Oregon, has lived in this state for more than fifty years, and during thirty years of this time, has practiced law in Portland. Concerning his candidacy, Mr. Jeffrey says: "I have at all times fought for justice and a square deal for our people. I am fully prepared to take up the work of legislation effectively, without any of the delays required by a green hand. I will fight to enact the Townsend Plan FIRST, that other necessary reforms may follow."

1.—The cause of human freedom, which held together Washington's soldiers at Valley Forge, is in deadly peril now, and its only adequate protection lies in the speedy enactment of the Townsend Recovery Plan into the Federal law of the United States.

2.—The Columbia River, is our greatest resource. Its power must be developed and saved from the hands of private greed, for the welfare of all our people.

3.—Our home industries and products, must be protected from all injurious private competition.

4.—I will at all times support the PROGRESSIVE POLICIES and program of the President.

I have been endorsed by the Area Boards of the Townsend forces of Oregon, as their candidate for United States Senator.

For this expression of confidence, I most sincerely thank them.

PAID ADV.

Kitten Stages High Dive As Firemen Try Rescue

The northern lights have seen queer sights, and the Medford fire department has been called upon to do some peculiar things. Their latest adventure called for the rescue of a small white kitten from the giant pine tree in the rear of the Paul Hoffard home at 307 South Oakdale.

The call was received Friday morning after the kitten had been aloft in the tree some time Wednesday morning. The frightened feline had climbed the tree and didn't know how to negotiate the return journey, and its plaintive wails for sustenance were haunting the neighborhood.

The fire company to the rescue! With a big hook and ladder truck under them James McNeil and Howard Glascock rushed to the scene and prepared to return the cat to mother earth.

Upon their arrival the feline was only 20 feet off the ground, out on a limb and looking upon the firemen with a speculative and not too receptive eye. As the ladders erected their ladder and moved toward the

cat, the cat retreated warily up the trunk of the tree.

This game kept up until the two smoke eaters were 100 feet above the ground. At that dizzying height, which the cat didn't seem to like much better than they did, they reached an impasse. The tree would no longer support them if they continued upward—the cat was ten feet above their heads.

One of the men cajolingly extended his forked stick to the cat in hopes she would come down and be nice about it.

The prodding of the stick alarmed the kitten only more, and she leaped frantically to a higher—and smaller—limb. Her footing slipped, she clung desperately for a brief moment, and then with an alarmed squawk plummeted downward. Straight past the two firemen she plunged, writhing and twisting and clawing at the empty air in an effort to catch something, but to no avail.

The slight branches whipped by her and she plunged the entire 100 feet to the earth.

Her descent did not end in her demise, however, for she landed, kerplunk, plump in the middle of the Hoffard fish pond, swooshing water in all directions and frightening the gold fish half to death. With one mighty leap and another squawk she cleared the pond, stood dejectedly on the edge and gazed with an injured look upon her two tormentors high above, and slunk off out of sight.

Polly Ann, seven-year-old daughter of the Hoffards, looked upon these proceedings, and then, like the scared kitten, slunk off, continuing her attempts to learn to ride the bicycle her old man bought for her birthday two days ago.

Would Register Lobbyist
WASHINGTON, April 4.—(AP)—Legislation to require the registration of lobbyists was speeded at the capitol today when the senate voted unanimously to substitute its lobby control bill for a house-passed measure and send both proposals to conference for final drafting.

Freshet Fears Alleged
THE DALLES, Ore., April 4.—(AP)—Fears of some residents here that freshet stages might develop on the Columbia river this year brought a statement from W. L. Crichton, federal river expert, that the Columbia is 3.1 feet below the same stage of 1935 at this time.

Allege Relief Chisel
ROSEBURG, Ore., April 4.—(AP)—The Douglas county relief committee met here in a special session last night to investigate charges that Victor P. Denn of Camas Valley had been drawing relief checks, while receiving compensation through the state industrial accident commission.

Use Mail Tribune want ads.

World War Veterans The State of Oregon Has 45 City Homes and 8 Farms FOR SALE

You can lease any of these on easy terms with an option which will permit you to apply the cash from your adjusted service certificate bonds next summer as a down payment for purchase. Inquire for details at

Carl Y. Tengwald

Representing
WORLD WAR VETERANS
STATE ACCOMMODATION
123 West Main St.

For Safety with Savings! COME TO WARDS AUTO SUPPLY DEPT.

**Trade in Those
Unsafe, Worn Tires!**

**EXTRA LIBERAL
TRADE-IN
ALLOWANCE
SALE!**

on Wards First Quality
Riverside Tires



No SAFER First Quality Tire Made!

The finest first quality tire your money can buy—regardless of price! Built with so much extra strength that actual tests prove you get up to 28% more SAFE mileage than other first quality tires!

Get Riversides Now at Extra Savings!

Test proved mileage plus Wards LOW prices and extra liberal trade in allowance make Riversides America's outstanding tire "buy"!

Written Guarantee Against Everything

Protects you against EVERYTHING that can happen to a tire in service—WITHOUT LIMIT as to months or miles! Strongest Guarantee written!

Wards Liberal Payments May Be Arranged

Save with Safety

**WARDS
Auto Parts**

Get Wards Low Prices

All Wards Replacement Parts are made to the same S. A. E. specifications as the original part that came with your car! You get exact duplication! Yet you save More at Wards LOWER Prices!

TELL-TALE DETECTOR 49c pr.
Fastens to headlamps. Jewel glows when light is on.

FLAT TYPE HORN 79c
Rust proof, chromium plated brass! Adjusting screw.

FENDER GUIDE 69c
Save your fenders. Smart-looking. Amber and black.

AUTO SPARK PLUGS 33c each
Get a set now. Easier starting and better performance!

Bumper Stops 89c pr.
Protects your fenders, headlights, radiator.

Wiper Blades 15c
7 edges wipe windshield clean in heaviest rain.

Wards hydraulic brake fluid 1 quart. 59c

Lined brake shoes, Plym. 29-32, 2 whls. 1.59 set

Stop - Tail Light - Univ. mounting. 89c

Chr. 28 - 35 King Bolt Set. Sae. 65c

Wards vacuum horn. 3.19

Polishing cloth. 29c

1 Day Only! Wards Safety Show

Don't miss this thrilling demonstration of careful and careless driving! Tuesday 2:30 p. m. on Fir Street, between Main and 8th Sts. 20 minutes packed with thrills provided by Gus Schrader and Lew Brown — Racing Drivers!

LINED BRAKE SHOES 98c
Set of 4 for Ford 28-32 Exchange
Save extra! Trade-in your old brake shoes at Wards!
For Chev. 30-32 \$1.10 Exch.
For Ply. 29-32...\$1.50 Exch.

MAZDA BULBS 10c
3-c. p.—for tail-light
Genuine General Electric 21-21 c.p. for headlights 15c. 21-8 c.p. 15c. Save about 1-3!

Brake Lining 29c ft.
Flexible molded brake lining. 2 3/4 ins. Lasts longer. Internal or external brake.

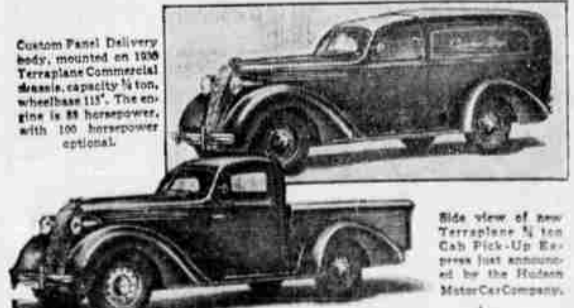
WINTER KING 5.75
With Your Old Battery
Extra Power! Extra reserve! 15 Plates! 24 month service adjustment guarantee!

100% PURE PENNSYLVANIA Motor Oil 17c qt.
Including Federal Tax in Your Own Container
Now refined by the latest processes! Anti-sludging, more full-bodied lubrication! Doubly de-waxed — gives twin range protection in extreme cold and extreme heat! All S.A.E. grades. 5 qt. can \$1.05.

BRAKE LINING SET 79c pr.
Set of linings complete with rivets.

LINED BRAKE BANDS 1.69 pr.
For Chev. 26-28. Complete, ready to install.

HUDSON ANNOUNCES FULL LINE OF TERRAPLANE COMMERCIAL CARS



Custom Panel Delivery body, mounted on 1936 Terraplane Commercial chassis, capacity 1 1/2 ton, wheelbase 115". The engine is horsepower, with 100 horsepower optional.

Side view of new Terraplane Cab Pick-Up. Exceeds just announced by the Hudson Motor Car Company.

With a complete line of Terraplane commercial cars designed to cover every purpose to which a commercial car may be put, Hudson is now in production on several models with shipments starting at once. It was announced today by W. R. Tracy, vice president in charge of sales.

The 1936 Terraplane commercial line includes six models—Custom panel delivery, three-quarter ton cab pick-up express, utility coach, custom station wagon, chassis and chassis with cab. All models are smartly styled after the fashion of the new 1936 passenger line of Terraplanes and are mounted on chassis with a wheelbase of 115 inches. Engines of 88 and 100 horsepower provide a maximum of power with a minimum of weight, resulting in marked economy of operation.

The new utility coach may be converted from a passenger car merely by removing the rear seat, which at once makes available a storage space of 116 cubic feet, entered from the rear. The custom panel delivery provides 130 cubic feet with a carrying weight of 1 1/2 of a ton.

The safety steel cab of the cab pick-up express model has a steel roof and is full three-passenger capacity.

The custom station wagon is stylish in appearance and the seats in the rear compartment may be easily removed whenever it is necessary to use the entire space for transportation of baggage or other articles. The front seat is a three-passenger width, and when the rear seats are in place, five additional passengers are accommodated. Production on this model will be started in the near future.

**A WINNER!
MOTOROLA
AUTO RADIO**

Broadcasting Studio Fidelity of Tone
No Spark Plug Suppressors Necessary
As Low as \$39.95

NO MONEY DOWN

Terms as low as \$1 a week

MATCHES THE DASH OF ALL CARS

LEWIS SUPER SERVICE STATION
8th and Front. Phone 1300 W. L. Lewis, Mgr.



MONTGOMERY WARD